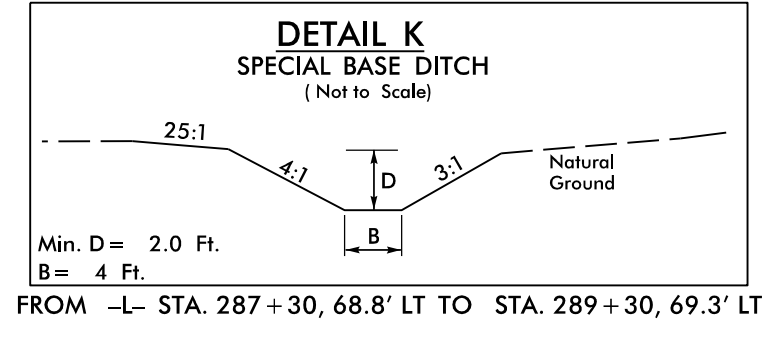
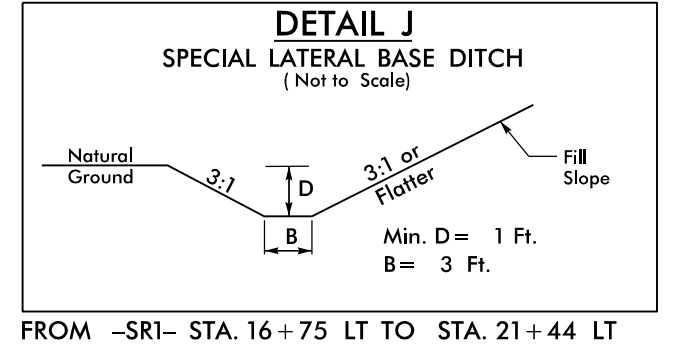
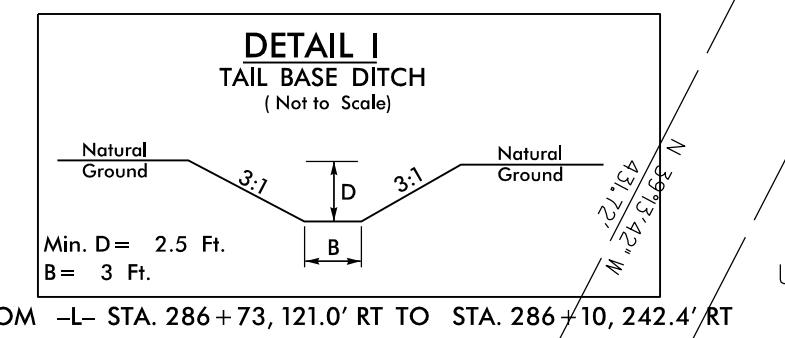
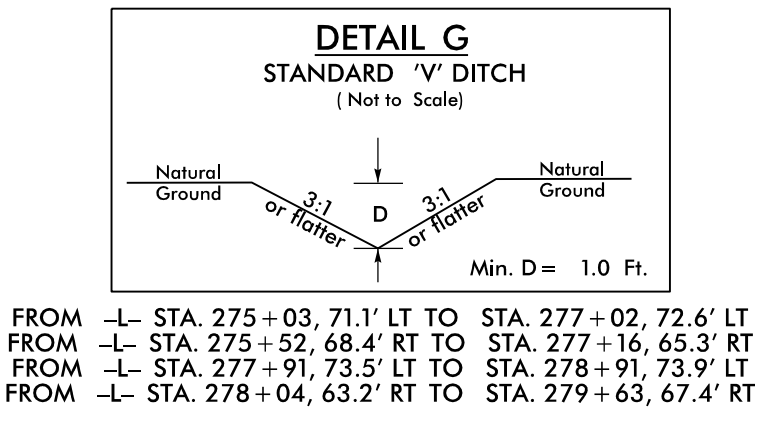
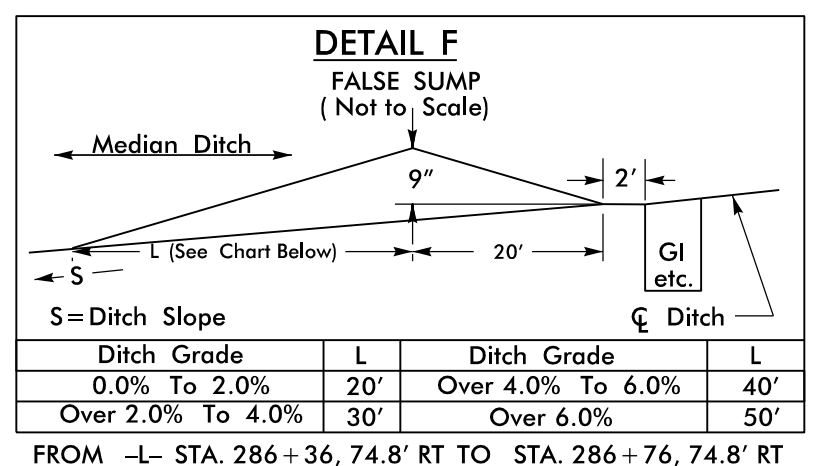
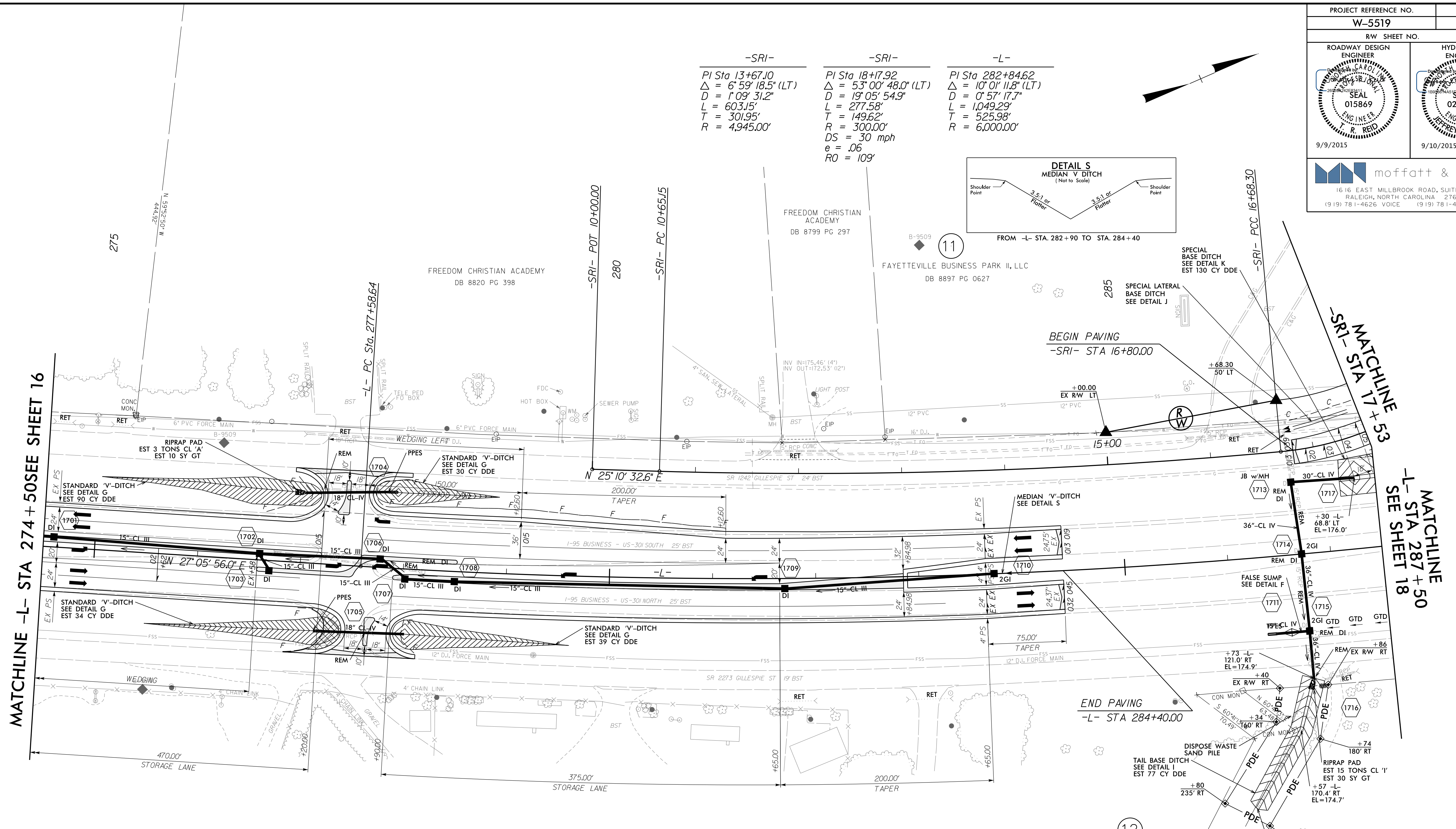
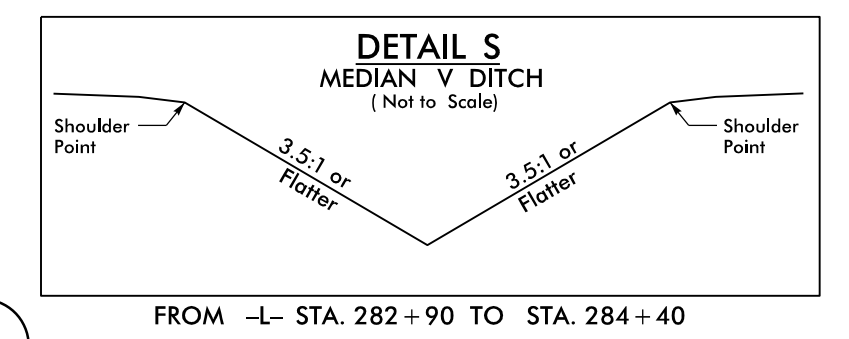
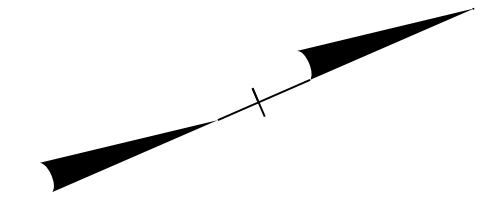


PROJECT REFERENCE NO.		SHEET NO.	
W-5519		17	
RW SHEET NO.			
ROADWAY DESIGN ENGINEER		HYDRAULICS ENGINEER	
9/9/2015		9/10/2015	
1616 EAST MILLBROOK ROAD, SUITE 160 RALEIGH, NORTH CAROLINA 27609 (919) 781-4626 VOICE (919) 781-4869 FAX			

-SRI-  
 PI Sta 13+67.10  
 $\Delta = 6^{\circ} 59' 18.5" (LT)$   
 $D = 1^{\circ} 09' 31.2"$   
 $L = 603.15'$   
 $T = 301.95'$   
 $R = 4,945.00'$

-SRI-  
 PI Sta 18+17.92  
 $\Delta = 53^{\circ} 00' 48.0" (LT)$   
 $D = 19^{\circ} 05' 54.9"$   
 $L = 277.58'$   
 $T = 149.62'$   
 $R = 300.00'$   
 $DS = 30$   
 $e = .06$   
 $RO = 109'$

-L-  
 PI Sta 282+84.62  
 $\Delta = 10^{\circ} 01' 11.8" (LT)$   
 $D = 0^{\circ} 57' 17.7"$   
 $L = 1,049.29'$   
 $T = 525.98'$   
 $R = 6,000.00'$



FOR -L- PROFILE SEE SHEETS 34 & 35 (FOR DITCH GRADES ONLY)  
 FOR -SRI- PROFILE SEE SHEET 40  
 FOR DIRECTIONAL CROSSOVER AND MEDIAN U-TURNS  
 SEE DETAIL #12 ON SHEET 2B-3

8/17/99  
 9/3/2015  
 P:\8467\Cadd\W5519\Roadway\Proj\W-5519\_rdy.psh\_s17.dgn