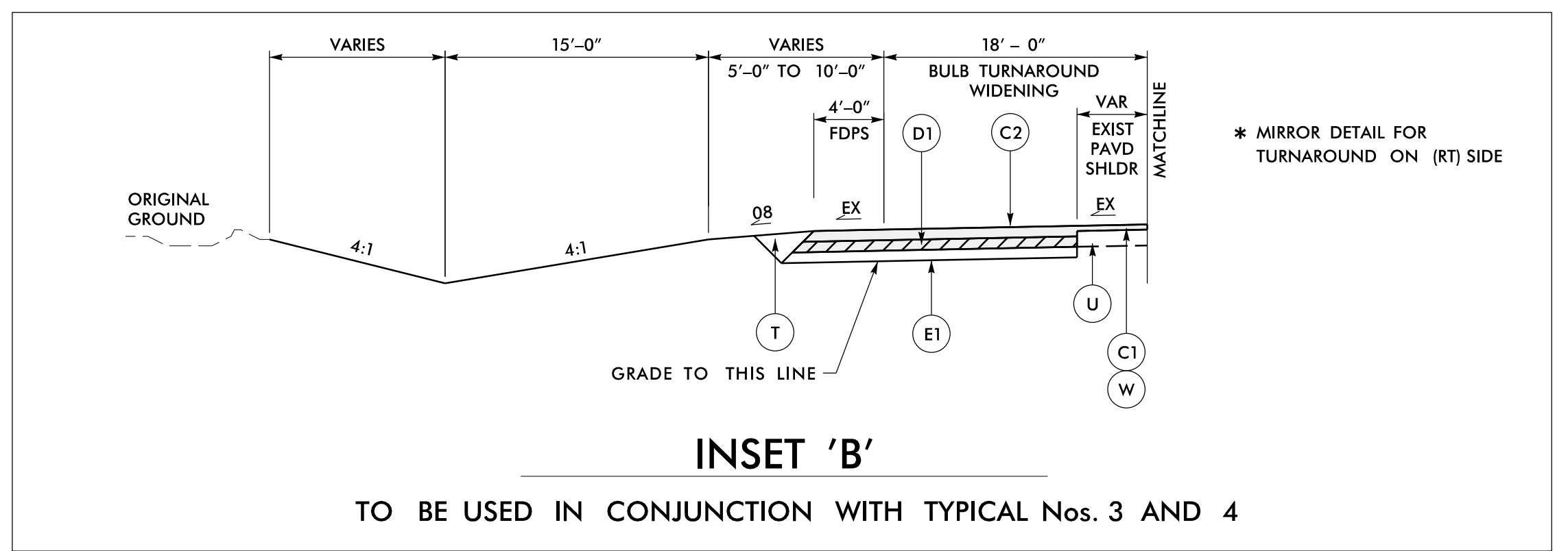


INSET 'A'

TO BE USED IN CONJUNCTION WITH TYPICAL Nos. 3 AND 4

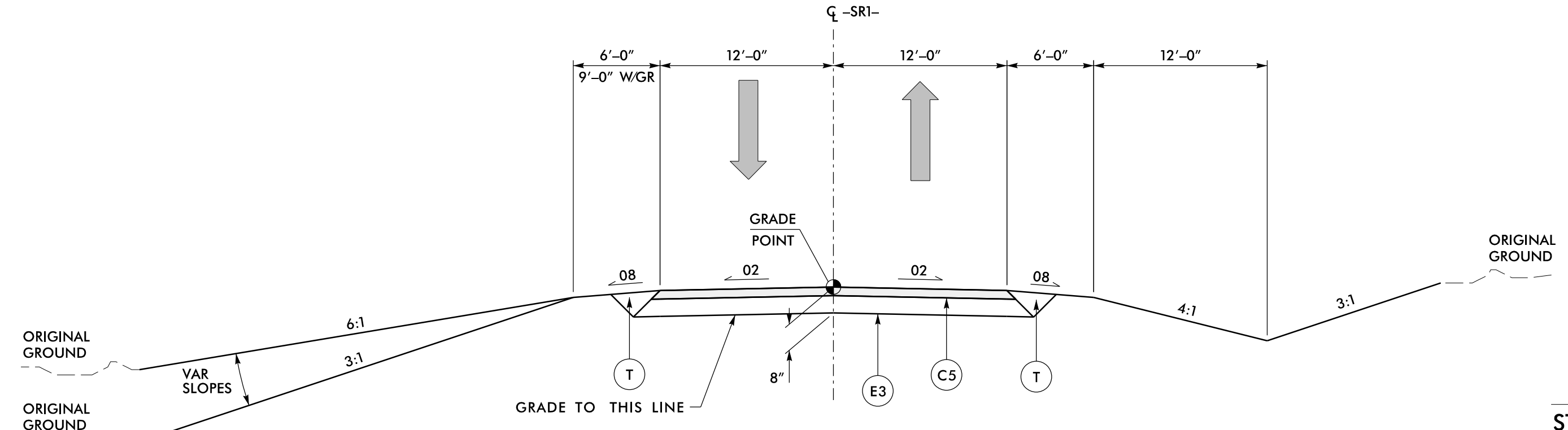


INSET 'B'

TO BE USED IN CONJUNCTION WITH TYPICAL Nos. 3 AND 4

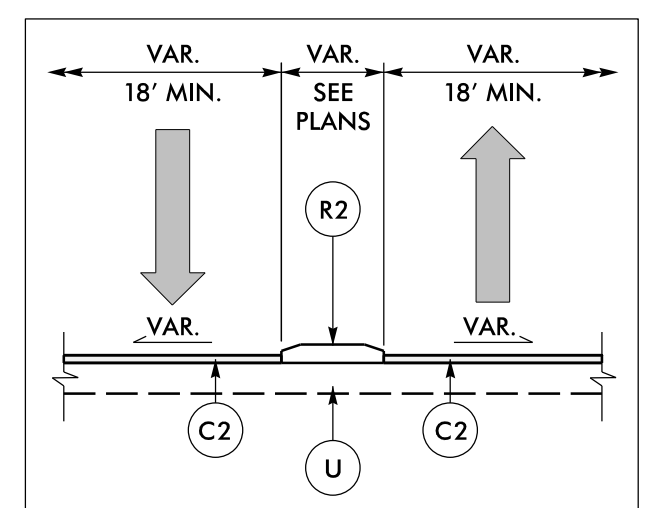
STA. 217+95.00 TO STA. 219+22.50 -L- (LT) STA. 242+12.50 TO STA. 243+40.00 -L- (RT)
 STA. 240+90.00 TO STA. 242+17.50 -L- (LT) STA. 421+25.00 TO STA. 422+55.00 -L- (LT)
 STA. 242+12.50 TO STA. 243+40.00 -L- (RT)

STA. 112+10.00 TO STA. 113+37.50 -L- (LT) STA. 241+75.00 TO STA. 242+25.00 -L- (LT)
 STA. 113+32.50 TO STA. 114+60.00 -L- (RT) STA. 264+50.00 TO STA. 265+25.00 -L- (LT)
 STA. 219+17.50 TO STA. 220+45.00 -L- (RT) STA. 265+25.00 TO STA. 265+75.00 -L- (RT)



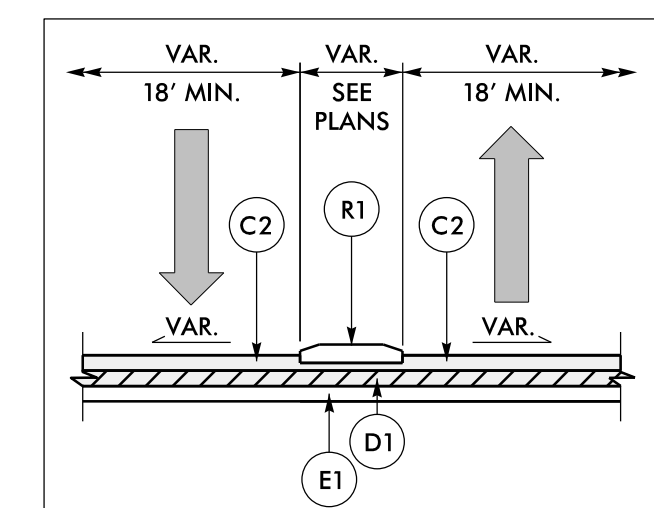
TYPICAL SECTION No. 5

STA. 16+80.00 TO STA. 21+57.60 -SRI-



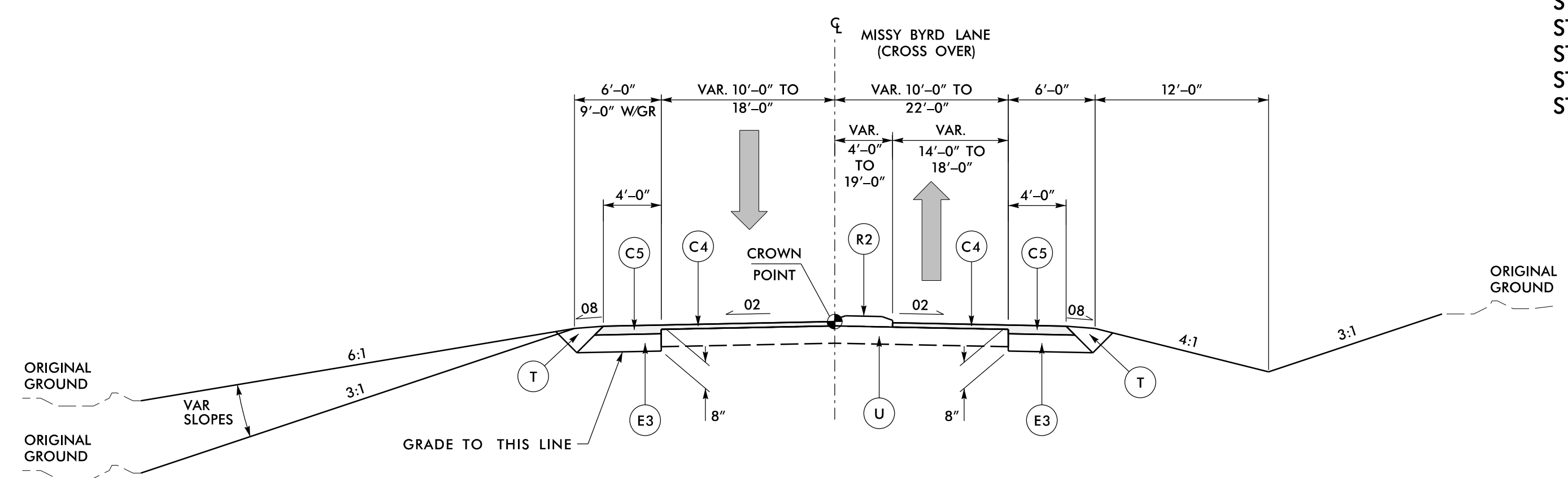
SERVICE ROAD CONNECTION DETAIL 'D'

STA. 121+92.00 -L- (LT)* STA. 253+44.00 -L- (RT)*
 STA. 132+53.00 -L- (RT)* STA. 277+24.00 -L- (LT)*
 STA. 143+38.00 -L- (LT)* STA. 277+67.00 -L- (RT)*
 STA. 143+62.00 -L- (RT)* STA. 330+70.00 -L- (LT)*
 STA. 206+98.00 -L- (LT)* STA. 361+18.00 -L- (LT)*
 STA. 207+22.00 -L- (RT)* STA. 361+42.00 -L- (RT)*
 STA. 232+61.00 -L- (LT)* STA. 372+16.00 -L- (LT)*
 STA. 232+85.00 -L- (RT)* STA. 372+14.00 -L- (RT)*
 STA. 253+24.00 -L- (LT)* STA. 407+68.00 -L- (LT)*



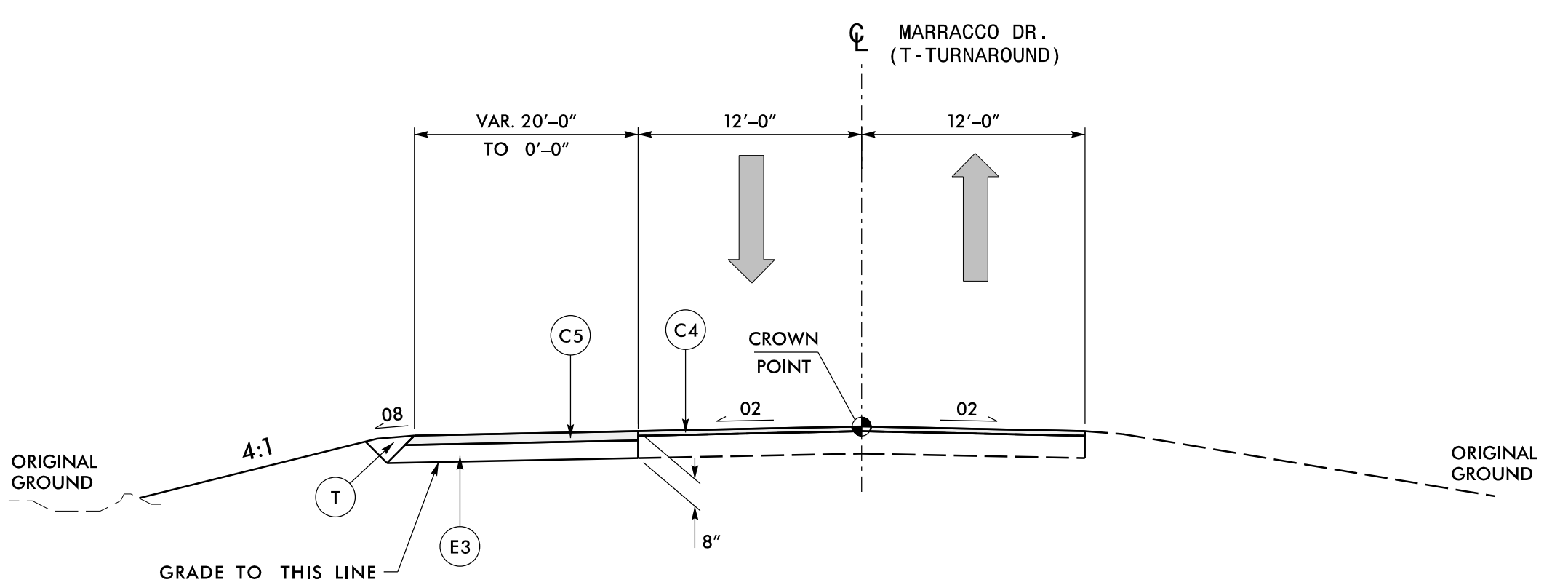
SERVICE ROAD CONNECTION DETAIL 'E'

STA. 411+88.00 -L- (LT)
 STA. 412+12.00 -L- (RT)



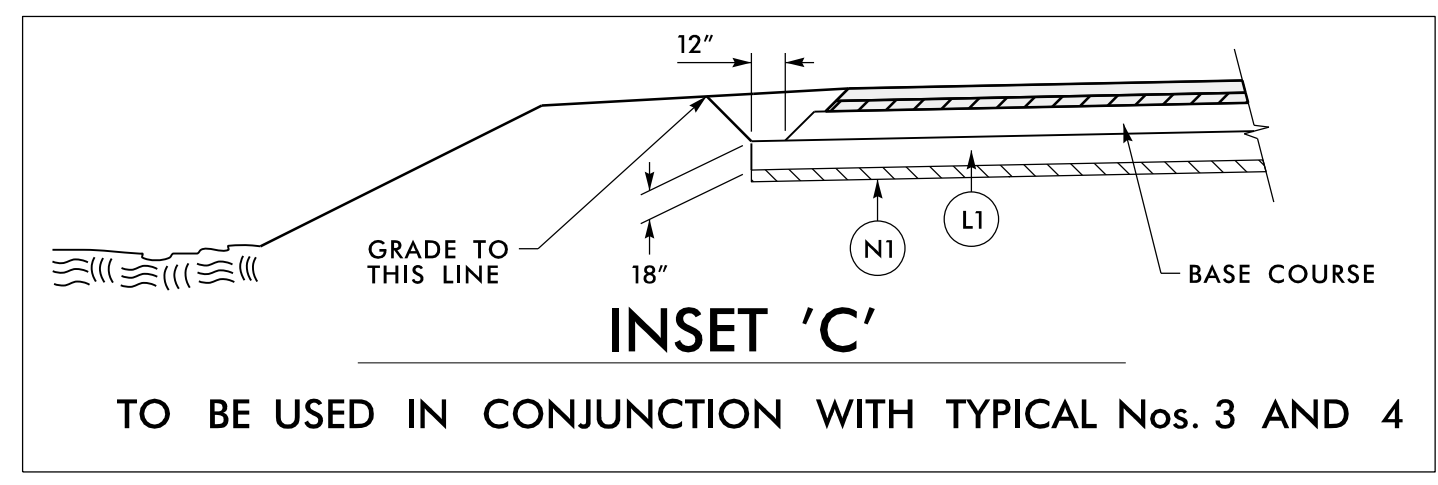
TYPICAL SECTION No. 6

SEE PLAN SHEETS 4 AND 2B-1 FOR LOCATION AND DIMENSIONS



TYPICAL SECTION No. 7

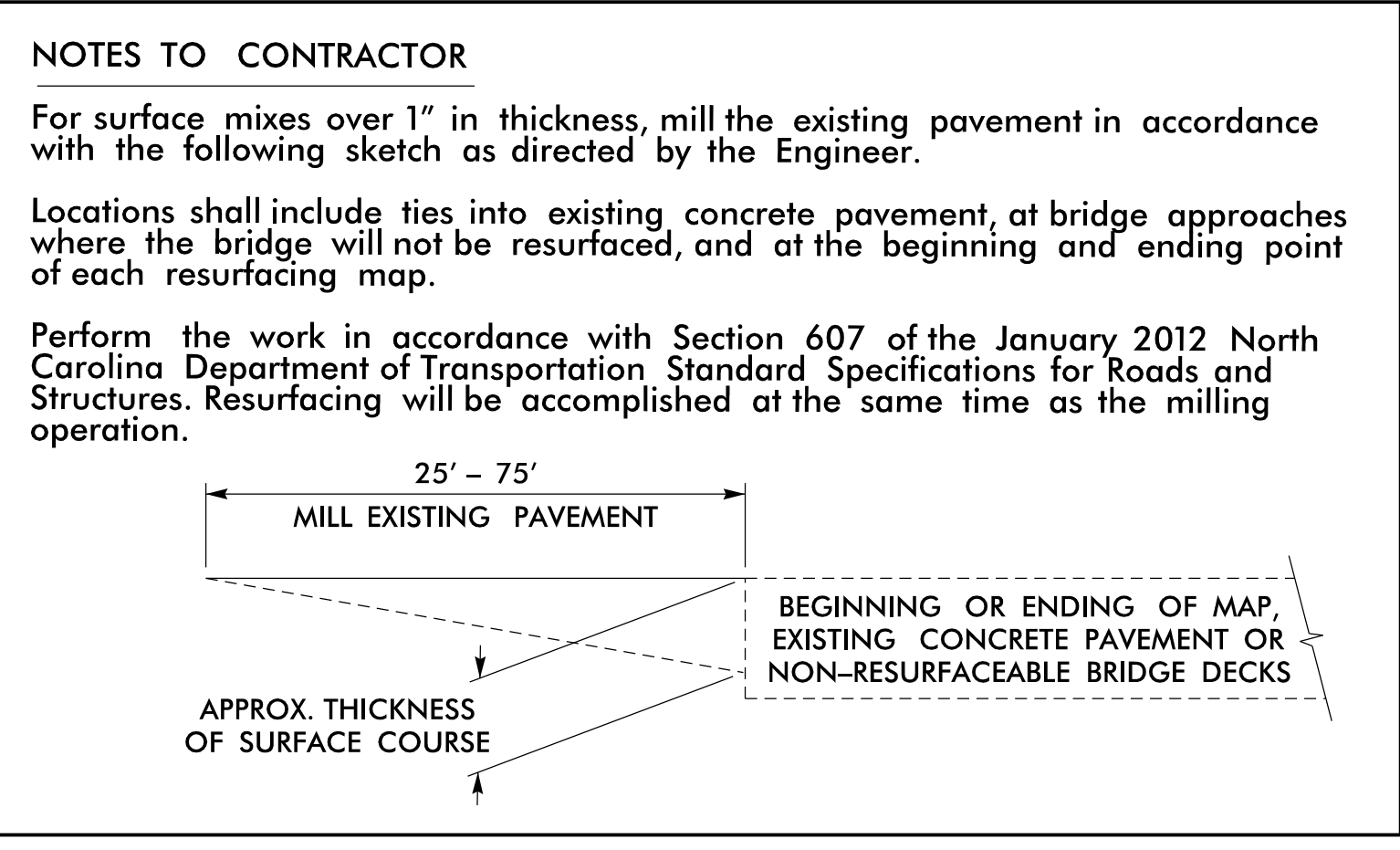
SEE PLAN SHEET 8 FOR LOCATION AND DIMENSIONS



INSET 'C'

TO BE USED IN CONJUNCTION WITH TYPICAL Nos. 3 AND 4

STA. 265+67.00 TO STA. 266+65 -L- (RT)



MILLING DETAIL AT PAVEMENT TIE-INS

RW SHEET NO.

ROADWAY DESIGN ENGINEER T. REID SEAL 015869 9/9/2015	PAVEMENT DESIGN ENGINEER G. MITCHELL SEAL 031484 9/10/2015
---	---

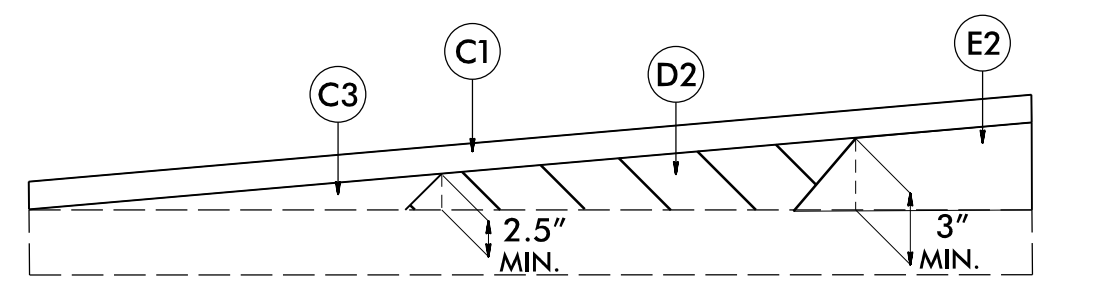
moffatt & nichol
 1616 EAST MILLBROOK ROAD, SUITE 160
 RALEIGH, NORTH CAROLINA 27609
 (919) 781-4626 VOICE (919) 781-4869 FAX

PAVEMENT SCHEDULE

CODE	DESCRIPTION
C1	1 1/2" S9.5C
C2	3" S9.5C
C3	VAR. S9.5C
C4	1 1/2" S9.5B
C5	3" S9.5B
D1	3" I19.0C
D2	VAR. I19.0C
E1	4" B25.0C
E2	VAR. B25.0C
E3	5" B25.0B
L1	CLASS IV SUB. STAB.
N1	FABRIC STABILIZATION
R1	5" CONC. ISLAND (KEYED IN)
R2	5" CONC. ISLAND (SURFACE)
T	EARTH MATERIAL
U	EXIST PAVEMENT
V	MILLING 0" TO 3"
W	WEDGING

NOTE: PAVEMENT EDGE SLOPES ARE 1:1 UNLESS SHOWN OTHERWISE.

WEDGING AREAS
(SEE PLANS AND CROSS SECTIONS)



Wedging Detail For Resurfacing

STA. 262+80.00 TO STA. 264+85.00 -L- (LT)
 STA. 266+47.00 TO STA. 272+50.00 -L- (LT)
 STA. 272+70.00 TO STA. 276+58.00 -L- (RT)
 STA. 277+20.00 TO STA. 279+13.00 -L- (LT)
 STA. 319+00.00 TO STA. 323+20.00 -L- (RT)
 STA. 319+20.00 TO STA. 323+00.00 -L- (LT)
 STA. 327+05.00 TO STA. 329+40.00 -L- (RT)
 STA. 329+40.00 TO STA. 330+45.00 -L- (LT)
 STA. 331+00.00 TO STA. 334+40.00 -L- (LT)
 STA. 364+60.00 TO STA. 367+90.00 -L- (LT)
 STA. 368+00.00 TO STA. 371+04.00 -L- (RT)

ADD'L MILLING AREAS
(SEE PLANS AND CROSS SECTIONS)

STA. 355+10.00 TO STA. 358+27.00 -L- (LT)
 STA. 356+50.00 TO STA. 360+95.00 -L- (RT)
 STA. 359+20.00 TO STA. 360+95.00 -L- (LT)
 STA. 362+27.00 TO STA. 364+00.00 -L- (LT)
 STA. 371+90.00 TO STA. 376+18.00 -L- (RT)
 STA. 373+00.00 TO STA. 374+40.00 -L- (LT)
 STA. 405+00.00 TO STA. 411+03.00 -L- (RT)
 STA. 421+65.00 TO STA. 423+00.00 -L- (RT)