

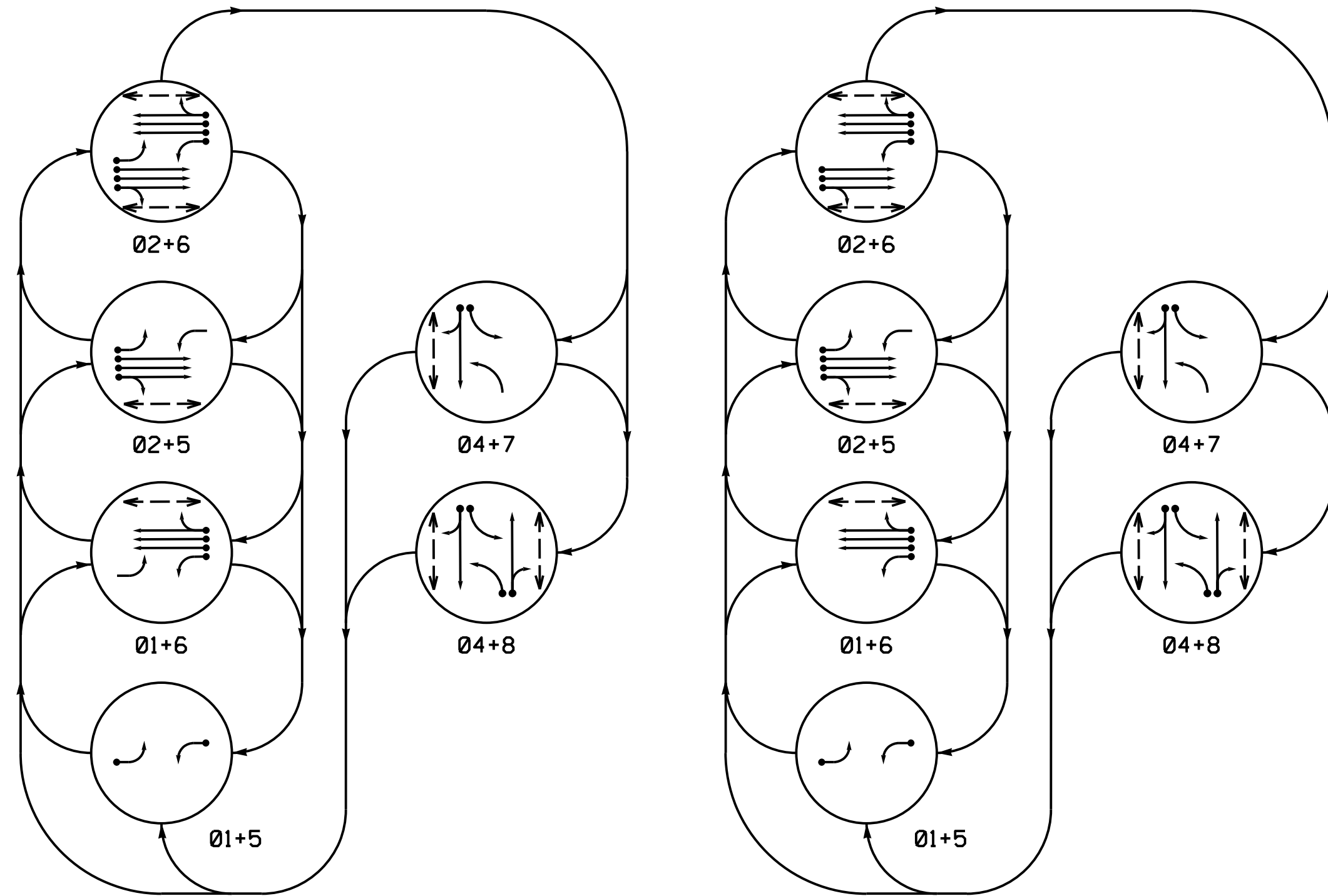
6 Phase Fully Actuated Fayetteville Signal System

NOTES

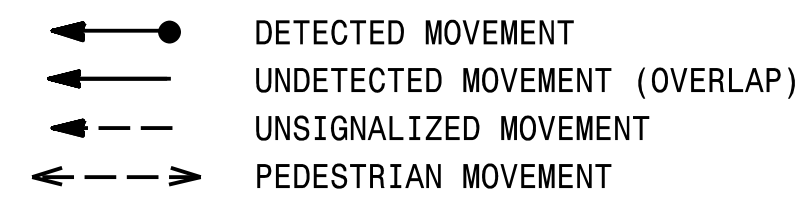
1. Refer to "Roadway Standard Drawings NCDOT" dated July 2012 and "Standard Specifications for Roads and Structures" dated July 2012.
2. Do not program signal for late night flashing operation unless otherwise directed by the Engineer.
3. Phase 1 and/or phase 5 may be lagged.
4. Set all detector units to presence mode.
5. Reposition existing signal heads 21, 22, 41, 42, 61, 62, 82, and 83.
6. Omit "WALK" and flashing "DON'T WALK" with no pedestrian calls.
7. Program pedestrian heads to countdown the flashing "Don't Walk" time only.
8. Maximum times shown in timing chart are for free run operation only. Coordinated signal timing values supersede these values.
9. The Division Traffic Engineer will determine the hours of use for alternate phasing plan.

DEFAULT PHASING DIAGRAM

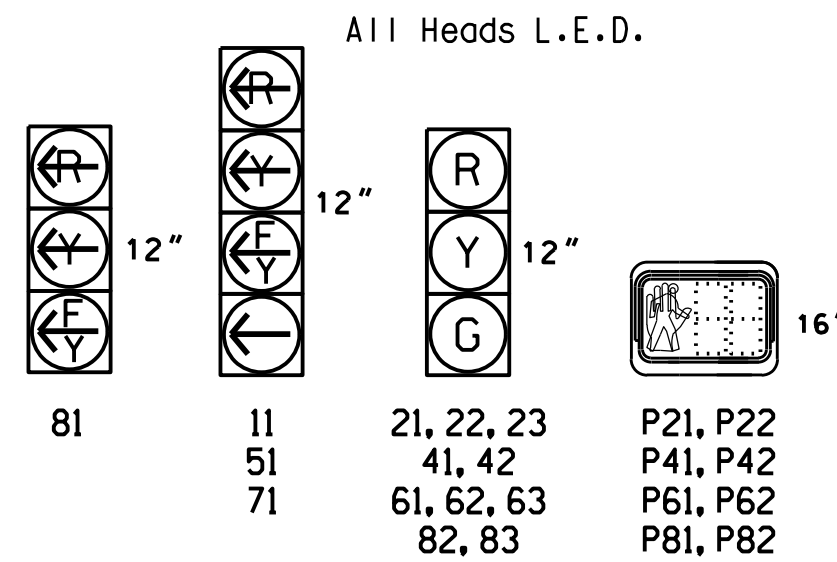
ALTERNATE PHASING DIAGRAM



PHASING DIAGRAM DETECTION LEGEND



SIGNAL FACE I.D.

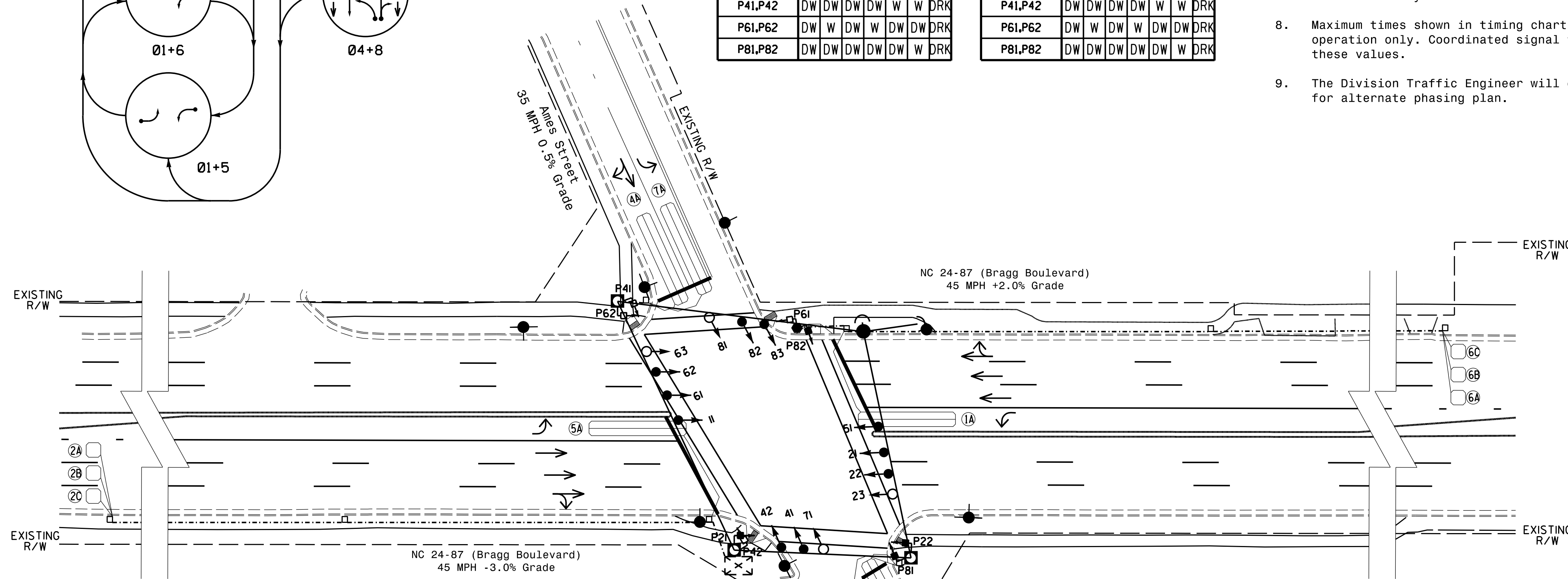


DEFAULT PHASING TABLE OF OPERATION

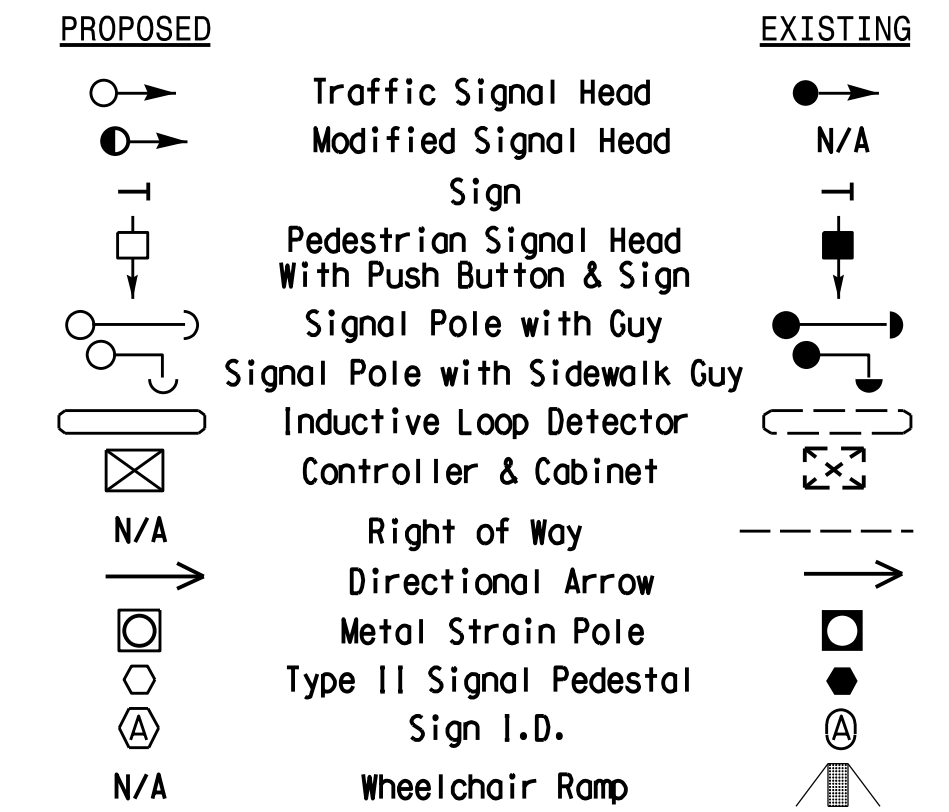
SIGNAL FACE	PHASE					
	01+5	01+6	02+5	02+6	04+7	04+8
11	---	---	---	---	---	---
21,22,23	R	R	G	G	R	R
41,42	R	R	R	R	G	G
51	---	---	---	---	---	---
61,62,63	R	G	R	G	R	R
71	---	---	---	---	---	---
81	---	---	---	---	---	---
82,83	R	R	R	R	G	R
P21,P22	DW	DW	W	W	DW	DRK
P41,P42	DW	DW	DW	DW	W	DRK
P61,P62	DW	W	DW	W	DW	DRK
P81,P82	DW	DW	DW	DW	W	DRK

ALTERNATE PHASING TABLE OF OPERATION

SIGNAL FACE	PHASE					
	01+5	01+6	02+5	02+6	04+7	04+8
11	---	---	---	---	---	---
21,22,23	R	R	G	G	R	R
41,42	R	R	R	R	G	G
51	---	---	---	---	---	---
61,62,63	R	G	R	G	R	R
71	---	---	---	---	---	---
81	---	---	---	---	---	---
82,83	R	R	R	R	G	R
P21,P22	DW	DW	W	W	DW	DRK
P41,P42	DW	DW	DW	DW	W	DRK
P61,P62	DW	W	DW	W	DW	DRK
P81,P82	DW	DW	DW	DW	W	DRK



LEGEND



OASIS 2070 TIMING CHART

FEATURE	PHASE							
	1	2	4	5	6	7	8	
Min Green 1*	7	12	7	7	12	7	7	
Extension 1*	2.0	6.0	2.0	2.0	6.0	2.0	2.0	
Max Green 1*	20	90	25	20	90	25	30	
Yellow Clearance	3.0	4.9	3.8	3.0	4.9	3.0	3.8	
Red Clearance	2.1	1.2	2.6	1.9	1.2	3.1	2.6	
Walk 1*	-	7	7	-	7	-	7	
Don't Walk 1	-	11	24	-	11	-	23	
Seconds Per Actuation*	-	1.5	-	-	1.5	-	-	
Max Variable Initial*	-	34	-	-	34	-	-	
Time Before Reduction*	-	15	-	-	15	-	-	
Time To Reduce*	-	30	-	-	30	-	-	
Minimum Gap	-	3.0	-	-	3.0	-	-	
Recall Mode	-	MIN RECALL	-	-	MIN RECALL	-	-	
Vehicle Call Memory	-	YELLOW	-	-	YELLOW	-	-	
Dual Entry	-	-	ON	-	-	-	ON	
Simultaneous Gap	ON	ON	ON	ON	ON	ON	ON	

OASIS 2070 LOOP & DETECTOR INSTALLATION CHART

LOOP	SIZE (FT)	DISTANCE FROM STOPBAR (FT)	TURNS	NEW LOOP	DETECTOR PROGRAMMING				SYSTEM LOOP	NEW CARD
					PHASE	CALLING	EXTENSION	STRETCH TIME		
1A	6x40	+5	2-4-2	Y	1	Y	Y	-	15	-
2A	6x6	300	4	Y	2	Y	Y	-	3	-
2B	6x6	300	4	Y	2	Y	Y	-	-	-
2C	6x6	300	4	Y	2	Y	Y	-	-	-
4A	6x40	+5	2-4-2	Y	4	Y	Y	-	10	-
5A	6x40	+5	2-4-2	Y	5	Y	Y	-	15*	-
6A	6x6	300	4	Y	6	Y	Y	-	3	-
6B	6x6	300	4	Y	6	Y	Y	-	-	-
6C	6x6	300	4	Y	6	Y	Y	-	-	-
7A	6x40	+5	2-4-2	Y	7	Y	Y	-	15	-
8A	6x40	+5	2-4-2	Y	8	Y	Y	-	3	-
8B	6x40	+5	2-4-2	Y	8	Y	Y	-	10	-

* These values may be field adjusted. Do not adjust Min Green and Extension times for phases 2 and 6 lower than what is shown. Min Green for all other phases should not be lower than 4 seconds.

* Disable Delay During Alternate Phasing Operation.
** Disable Phase 2 Call For Loops 5A During Alternate Phasing Operation.

Signal Upgrade

CDM Smith
5400 GLENWOOD AVENUE
Suite 400
RALEIGH, NC 27612
NC Licensure F-1255

Prepared in the Offices of:

 NC 24-87 (Bragg Boulevard) at Ames Street
 Division 6 Cumberland County Fayetteville
 PLAN DATE: September 2015 REVIEWED BY: D. Clodgo
 PREPARED BY: B. Wan REVIEWED BY:
 REVISIONS: _____ INIT. DATE
 SCALE: 1"=30'
 SIGNATURE: _____ DATE: _____
 SIG. INVENTORY NO. 06-0565