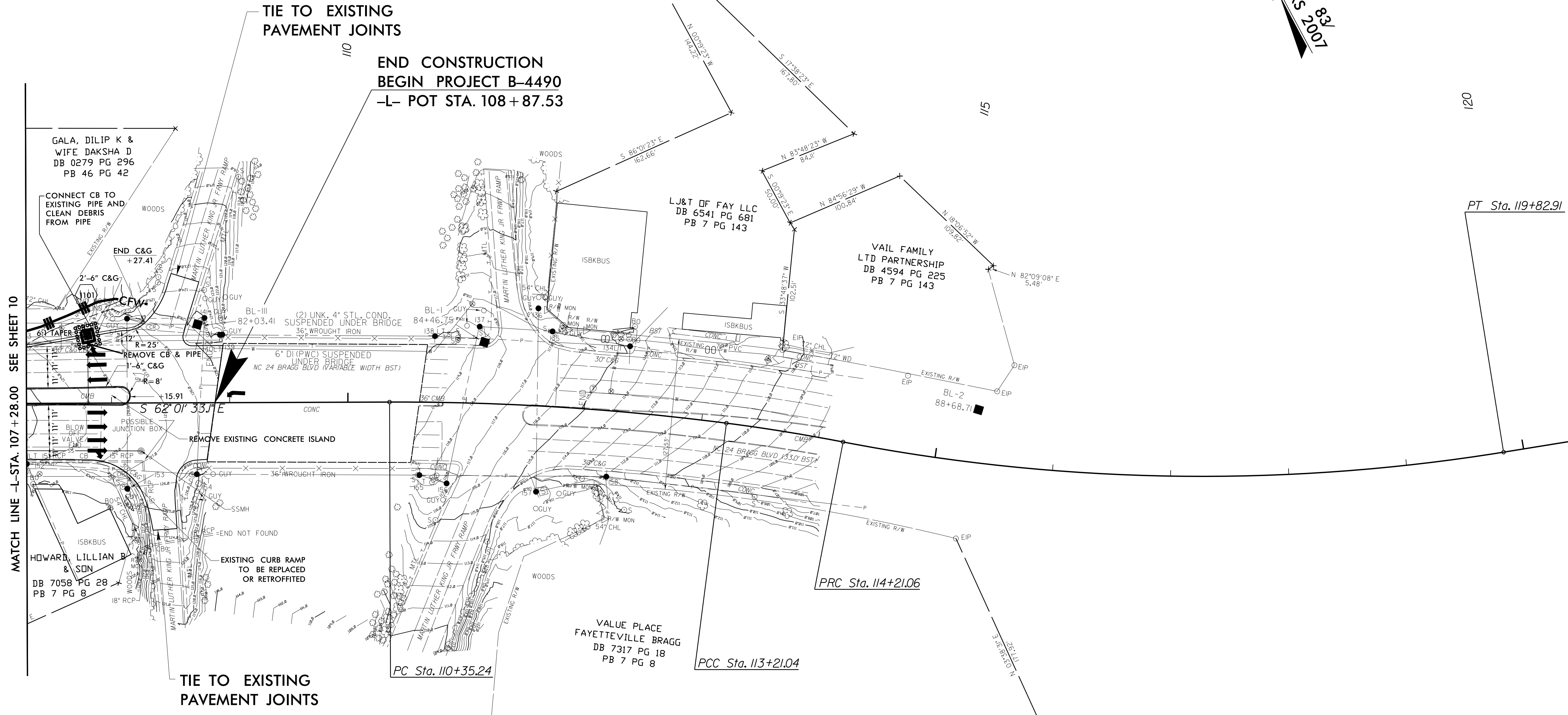
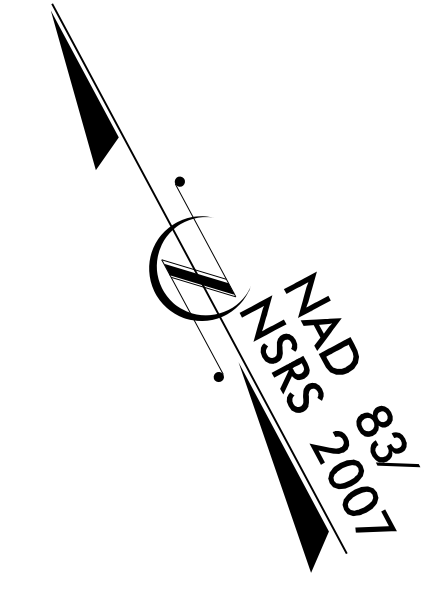


PROJECT REFERENCE NO.	SHEET NO.
W-5206AM	EC-11/CONST.11
RW SHEET NO.	
ROADWAY DESIGN ENGINEER	HYDRAULICS ENGINEER
<b>CDM Smith</b>	<b>M Engineering, PLLC</b>
<small>Camp Dresser &amp; McKee 5470 Glenwood Avenue Suite 400 Raleigh, NC 27612-3228 NC CDA No. F-0412</small>	<small>M Engineering, PLLC 1011 Schuch Drive Suite 100 Raleigh, NC 27606 NC CDA No. P-0671</small>

UTILIZE FABRIC INSERT INLET PROTECTION DEVICES IN LIEU OF TYPE C INLET PROTECTION AT INLETS WHERE RUNOFF MAY POND ON ROADWAY USED BY PUBLIC TRAFFIC

-L-		
PI Sta 111+78.35 Δ = 7' 33' 51.6" (RT) D = 2' 38' 47.9" L = 285.81' T = 143.11' R = 2,164.84'	PI Sta 113+71.07 Δ = 3' 34' 53.1" (RT) D = 3' 34' 51.6" L = 100.01' T = 50.02' R = 1,600.00'	PI Sta 117+04.91 Δ = 20' 07' 11.6" (LT) D = 3' 34' 51.6" L = 561.85' T = 283.85' R = 1,600.00'



REVISIONS

NOTE: SEE SHEET 16 FOR PROFILE  
SEE SHEET 2B-11 FOR INTERSECTION DETAIL  
SEE SHEET 2B-1 THRU 2B-5A  
FOR CURB RAMP DETAILS