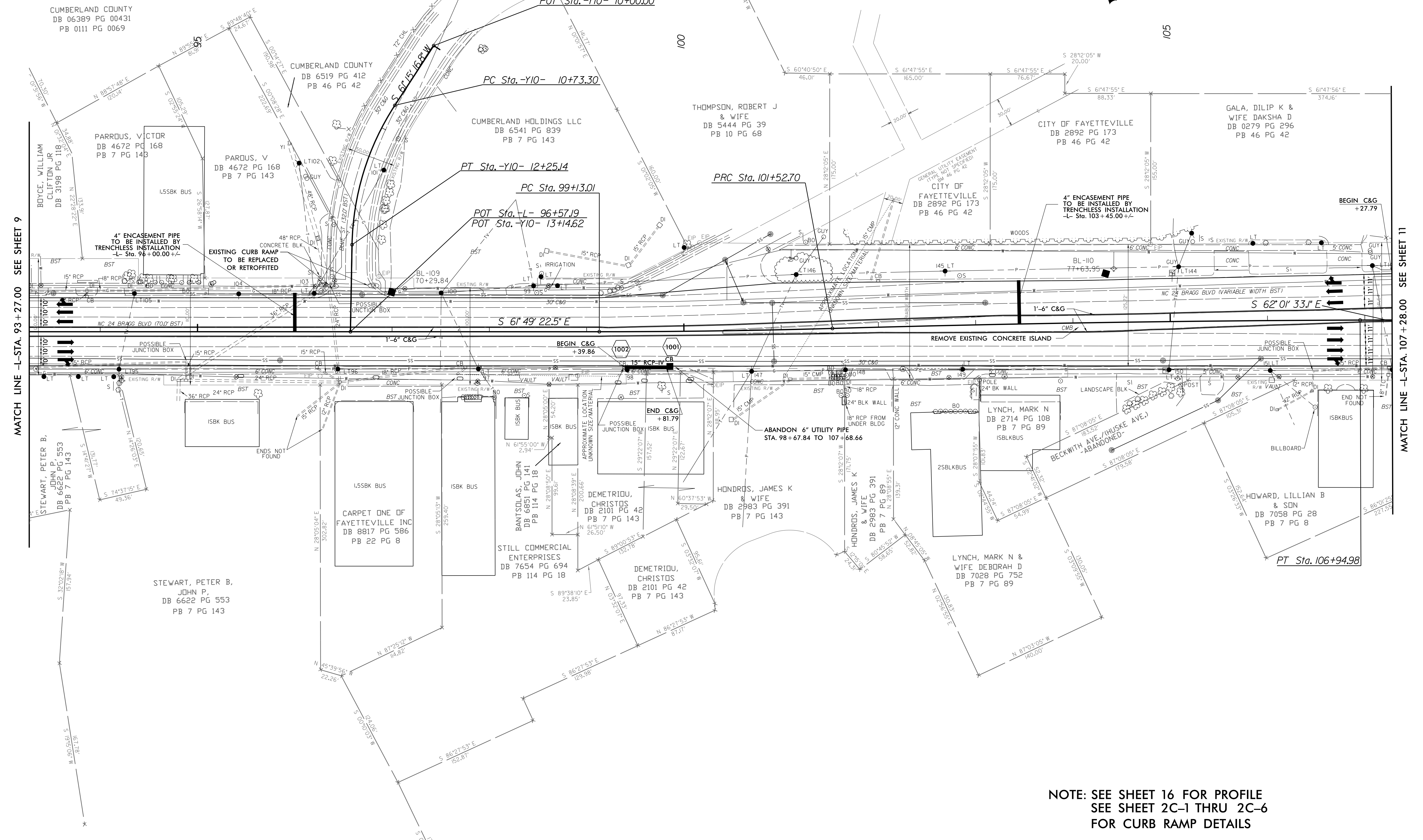
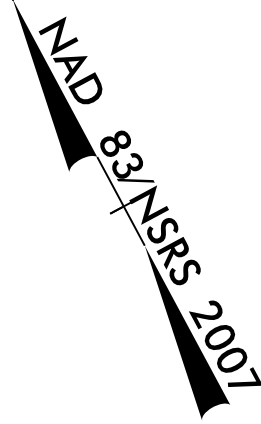


**-Y10-**

PI Sta 11+51.26  
 $\Delta = 32' 01" 02.3" (LT)$   
 $D = 21' 05" 09.6"$   
 $L = 151.84'$   
 $T = 77.96'$   
 $R = 271.72'$

**-L-**

PI Sta 100+32.86 $\Delta = 1' 36" 56.4" (LT)$ $D = 0' 40" 26.6"$ $L = 239.69'$ $T = 119.85'$ $R = 8,500.00'$	PI Sta 104+23.93 $\Delta = 1' 24" 45.8" (RT)$ $D = 0' 15" 37.6"$ $L = 542.44'$ $T = 271.23'$ $R = 22,000.00'$
---	--



MATCH LINE -L- STA. 93+27.00 SEE SHEET 9

MATCH LINE -L- STA. 107+28.00 SEE SHEET 11

NOTE: SEE SHEET 16 FOR PROFILE  
 SEE SHEET 2C-1 THRU 2C-8  
 FOR CURB RAMP DETAILS

REVISIONS  
 9/24/2015 4:32:53 PM  
 W-5206AM\_10.dwg  
 11:56:57 AM  
 8/17/99