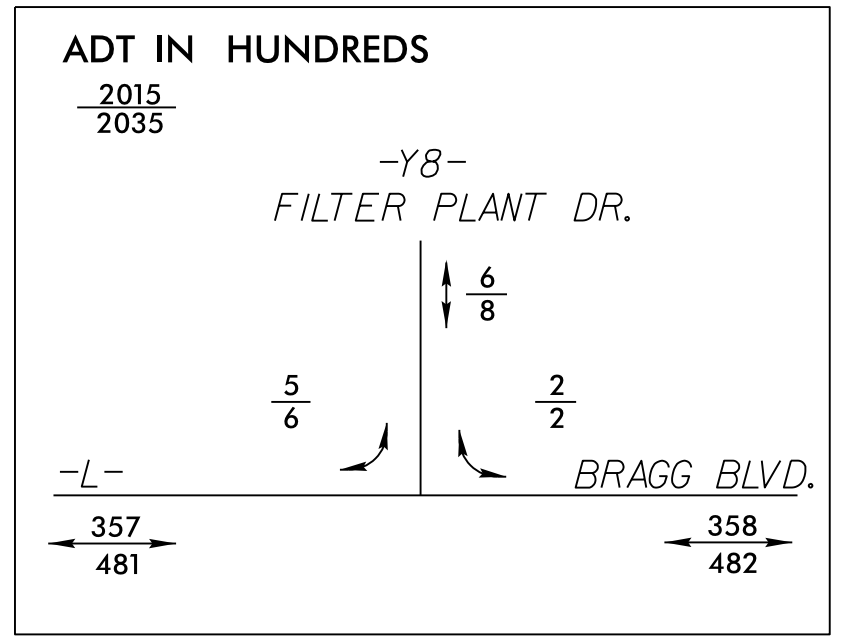


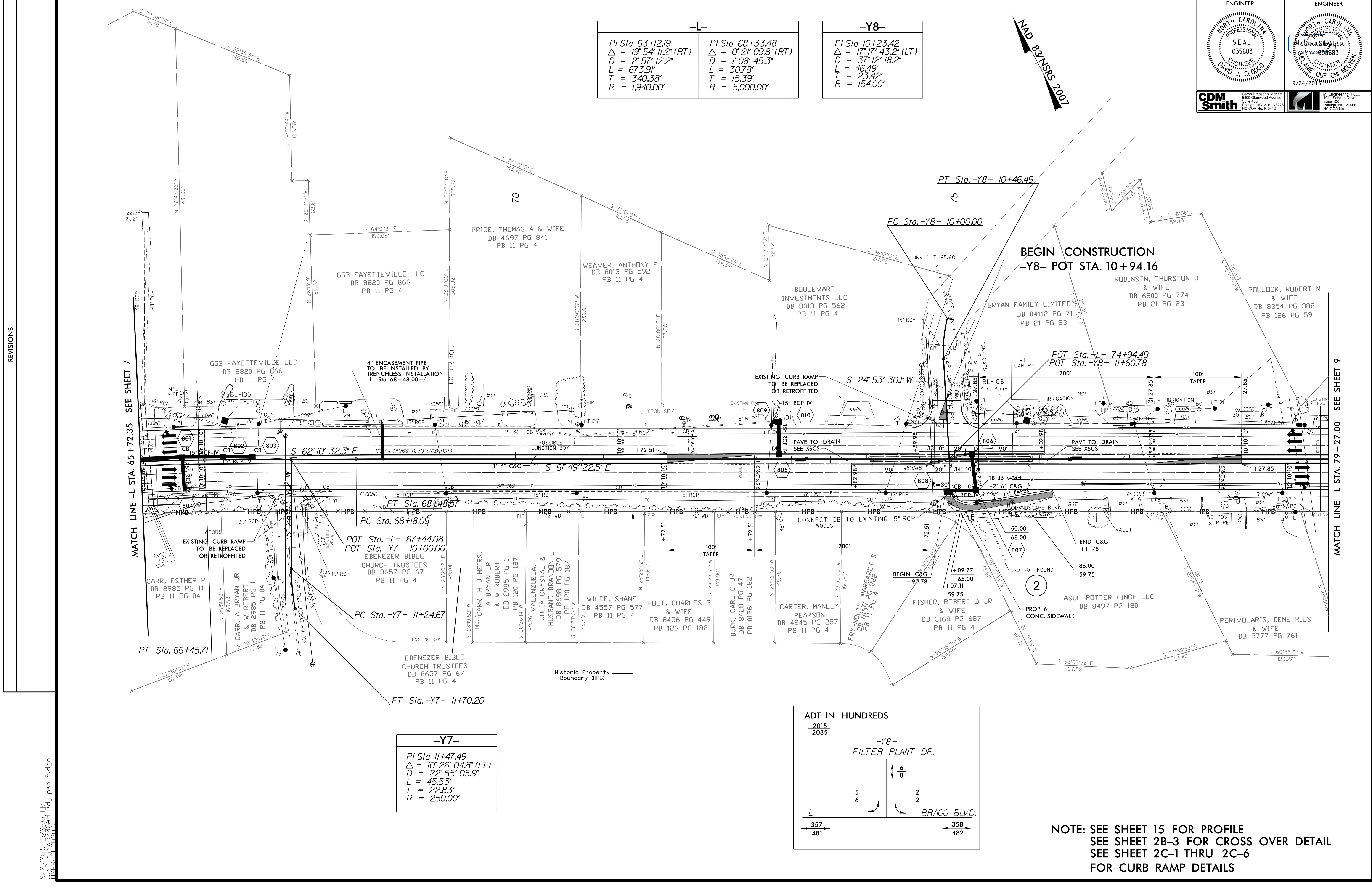
-L-	
PI Sta 63+12.9	PI Sta 68+33.48
$\Delta = 19' 54' 11.2''$ (RT)	$\Delta = 0' 21' 09.8''$ (RT)
$D = 2' 57' 12.2''$	$D = 1' 08' 45.3''$
$L = 673.91'$	$L = 30.78'$
$T = 340.38'$	$T = 15.39'$
$R = 1,940.00'$	$R = 5,000.00'$

-Y8-	
PI Sta 10+23.42	PI Sta 10+23.42
$\Delta = 17' 17' 43.2''$ (LT)	$\Delta = 17' 17' 43.2''$ (LT)
$D = 37' 12' 18.2''$	$D = 37' 12' 18.2''$
$L = 46.49'$	$L = 46.49'$
$T = 23.42'$	$T = 23.42'$
$R = 154.00'$	$R = 154.00'$

-Y7-	
PI Sta 11+47.49	PI Sta 11+47.49
$\Delta = 10' 26' 04.8''$ (LT)	$\Delta = 10' 26' 04.8''$ (LT)
$D = 22' 55' 05.9''$	$D = 22' 55' 05.9''$
$L = 45.53'$	$L = 45.53'$
$T = 22.83'$	$T = 22.83'$
$R = 250.00'$	$R = 250.00'$



NOTE: SEE SHEET 15 FOR PROFILE
 SEE SHEET 2B-3 FOR CROSS OVER DETAIL
 SEE SHEET 2C-1 THRU 2C-6
 FOR CURB RAMP DETAILS



8.17.99
 REVISIONS
 9/21/2015 4:29:05 PM
 W:\5206AM\1\2\du_psh_8.dgn
 11:56:57 AM