

BM #2 RR SPIKE IN 20" SWEET GUM  
-L- STA. 14+04.59 148.44' LT  
EL. = 519.16'

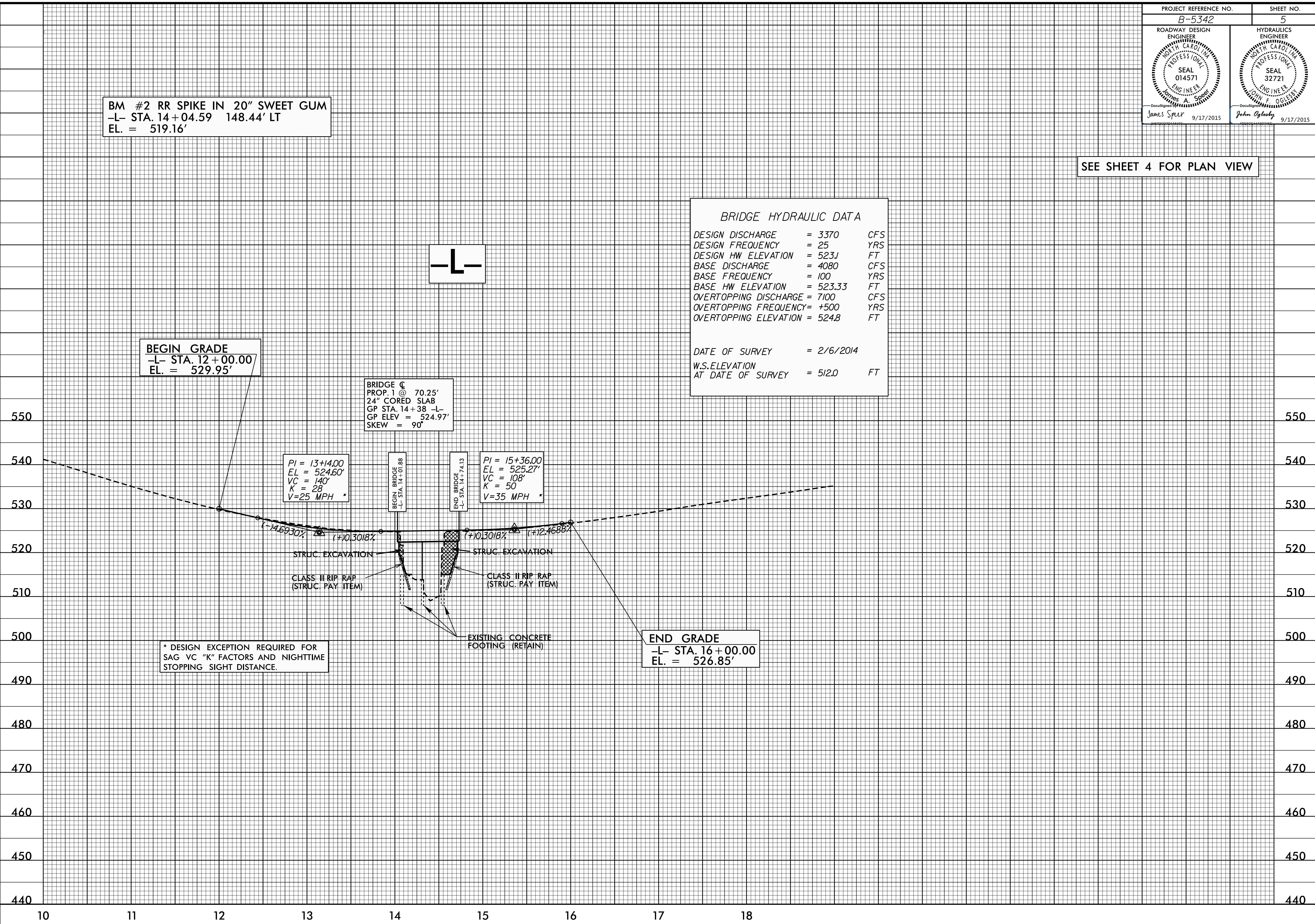
SEE SHEET 4 FOR PLAN VIEW

**BRIDGE HYDRAULIC DATA**

DESIGN DISCHARGE	= 3370	CFS
DESIGN FREQUENCY	= 25	YRS
DESIGN HW ELEVATION	= 523.1	FT
BASE DISCHARGE	= 4080	CFS
BASE FREQUENCY	= 100	YRS
BASE HW ELEVATION	= 523.33	FT
OVERTOPPING DISCHARGE	= 7100	CFS
OVERTOPPING FREQUENCY	= +500	YRS
OVERTOPPING ELEVATION	= 524.8	FT

DATE OF SURVEY	= 2/6/2014
W.S. ELEVATION AT DATE OF SURVEY	= 512.0 FT



BEGIN GRADE  
-L- STA. 12+00.00  
EL. = 529.95'

BRIDGE C  
PROP. 1 @ 70.25'  
24" CORED SLAB  
GP STA. 14+38 -L-  
GP ELEV = 524.97'  
SKEW = 90°

PI = 13+14.00  
EL = 524.60'  
VC = 140'  
K = 28  
V = 25 MPH

PI = 15+36.00  
EL = 525.27'  
VC = 108'  
K = 50  
V = 35 MPH

\* DESIGN EXCEPTION REQUIRED FOR SAG VC "K" FACTORS AND NIGHTTIME STOPPING SIGHT DISTANCE.

END GRADE  
-L- STA. 16+00.00  
EL. = 526.85'

51499

04-SEP-2015 07:29  
SS:\SUSAN\W\5342-2\_Rdy\_pfl.dgn