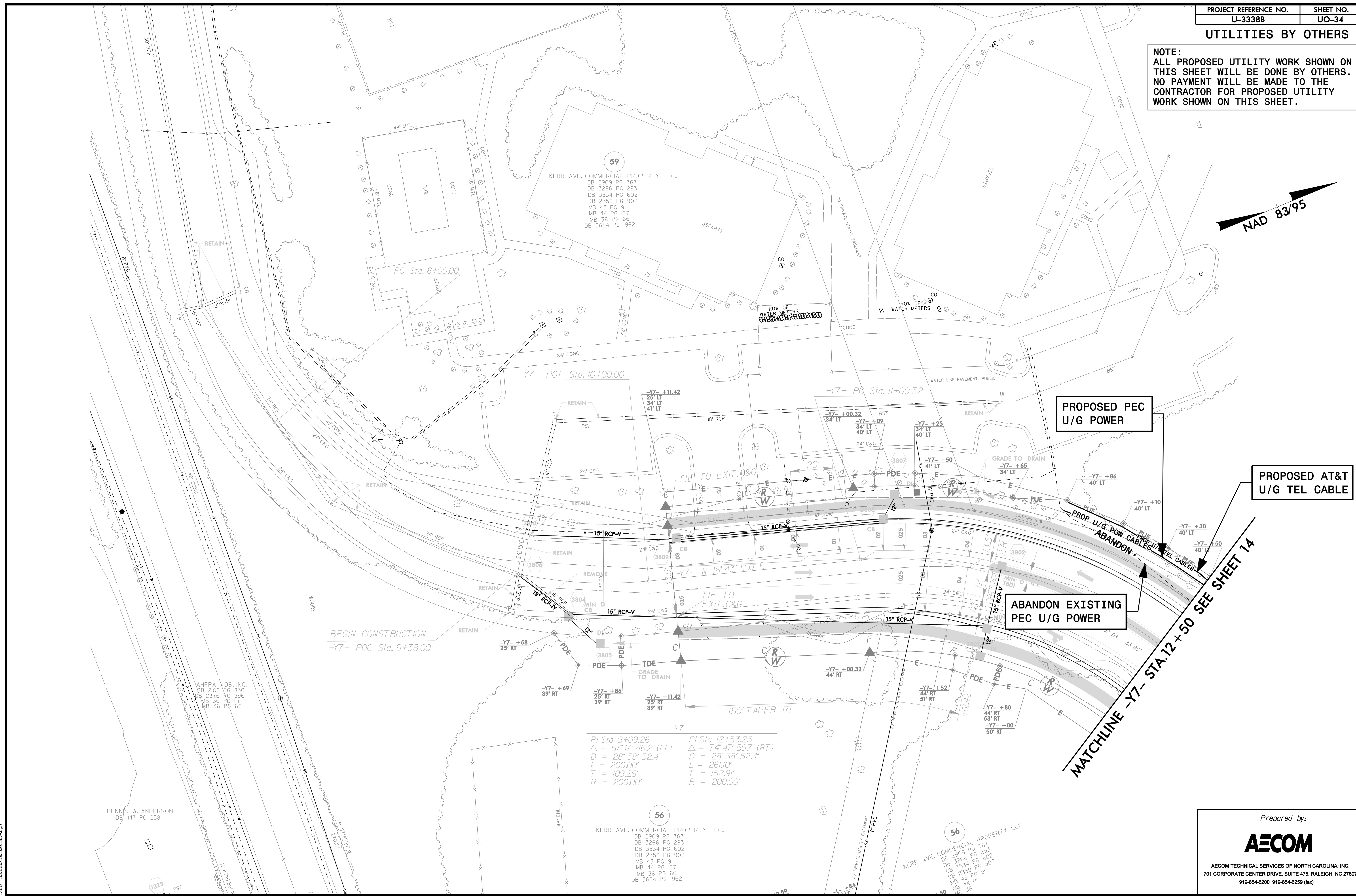
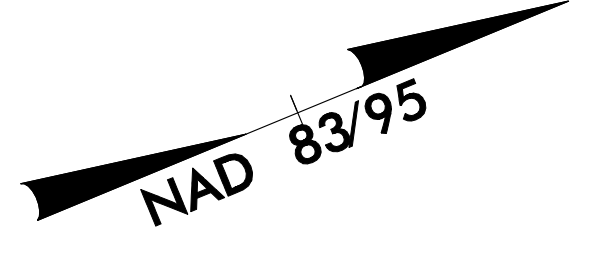


UTILITIES BY OTHERS

NOTE:
ALL PROPOSED UTILITY WORK SHOWN ON THIS SHEET WILL BE DONE BY OTHERS. NO PAYMENT WILL BE MADE TO THE CONTRACTOR FOR PROPOSED UTILITY WORK SHOWN ON THIS SHEET.



**PROPOSED PEC
U/G POWER**

**PROPOSED AT&T
U/G TEL CABLE**

**ABANDON EXISTING
PEC U/G POWER**

MATCHLINE -Y7- STA. 12+50 SEE SHEET 14

<p>PI Sta 9+09.26 $\Delta = 57^{\circ} 17' 46.2''$ (LT) $D = 28^{\circ} 38' 52.4''$ $L = 200.00'$ $T = 109.26'$ $R = 200.00'$</p>	<p>PI Sta 12+53.23 $\Delta = 74^{\circ} 47' 59.7''$ (RT) $D = 28^{\circ} 38' 52.4''$ $L = 261.00'$ $T = 152.91'$ $R = 200.00'$</p>
---	--

56
KERR AVE. COMMERCIAL PROPERTY LLC.
DB 2909 PG 767
DB 3266 PG 293
DB 3534 PG 602
DB 2359 PG 907
MB 43 PG 91
MB 44 PG 157
MB 36 PG 66
DB 5654 PG 1962

56
KERR AVE. COMMERCIAL PROPERTY LLC.
DB 2909 PG 767
DB 3266 PG 293
DB 3534 PG 602
DB 2359 PG 907
MB 43 PG 91
MB 44 PG 157
MB 36 PG 66

DENNIS W. ANDERSON
DB 1147 PG 258

AHEPA 408, INC.
DB 2102 PG 830
DB 2376 PG 996
MB 36 PG 66

DATE: 1/24/2016
DRAWN: U3338B_UO-34.dwg

Prepared by:
AECOM
AECOM TECHNICAL SERVICES OF NORTH CAROLINA, INC.
701 CORPORATE CENTER DRIVE, SUITE 475, RALEIGH, NC 27607
919-854-6200 919-854-6259 (fax)