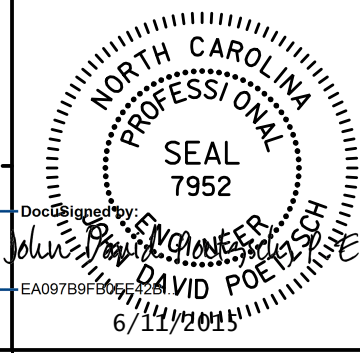
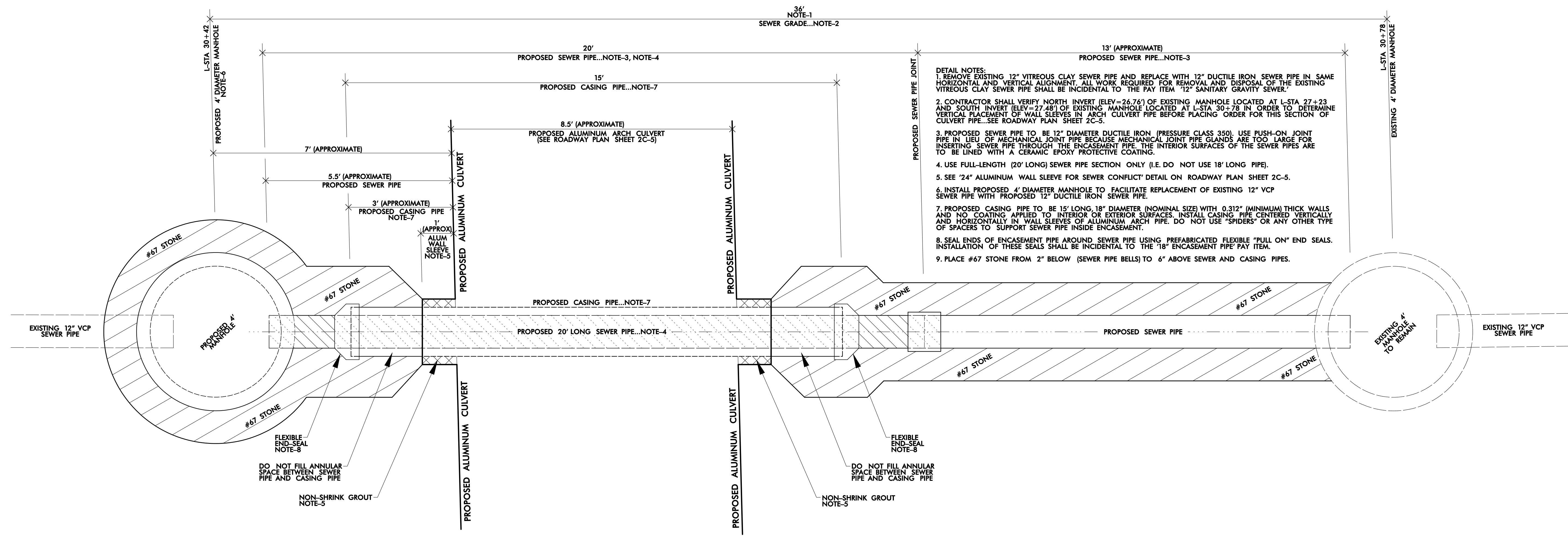


SCALE:
NONE



UTILITY CONSTRUCTION

SEWER PIPE /ARCH CULVERT DETAIL



- DETAIL NOTES:**
1. REMOVE EXISTING 12" VITREOUS CLAY SEWER PIPE AND REPLACE WITH 12" DUCTILE IRON SEWER PIPE IN SAME HORIZONTAL AND VERTICAL ALIGNMENT. ALL WORK REQUIRED FOR REMOVAL AND DISPOSAL OF THE EXISTING VITREOUS CLAY SEWER PIPE SHALL BE INCIDENTAL TO THE PAY ITEM "12" SANITARY GRAVITY SEWER."
 2. CONTRACTOR SHALL VERIFY NORTH INVERT (ELEV=26.76') OF EXISTING MANHOLE LOCATED AT L-STA 27+23 AND SOUTH INVERT (ELEV=27.48') OF EXISTING MANHOLE LOCATED AT L-STA 30+78 IN ORDER TO DETERMINE VERTICAL PLACEMENT OF WALL SLEEVES IN ARCH CULVERT PIPE BEFORE PLACING ORDER FOR THIS SECTION OF CULVERT PIPE...SEE ROADWAY PLAN SHEET 2C-5.
 3. PROPOSED SEWER PIPE TO BE 12" DIAMETER DUCTILE IRON (PRESSURE CLASS 350). USE PUSH-ON JOINT PIPE IN LIEU OF MECHANICAL JOINT PIPE BECAUSE MECHANICAL JOINT PIPE GLANDS ARE TOO LARGE FOR INSERTING SEWER PIPE THROUGH THE ENCASEMENT PIPE. THE INTERIOR SURFACES OF THE SEWER PIPES ARE TO BE LINED WITH A CERAMIC EPOXY PROTECTIVE COATING.
 4. USE FULL-LENGTH (20' LONG) SEWER PIPE SECTION ONLY (I.E. DO NOT USE 18' LONG PIPE).
 5. SEE "24" ALUMINUM WALL SLEEVE FOR SEWER CONFLICT" DETAIL ON ROADWAY PLAN SHEET 2C-5.
 6. INSTALL PROPOSED 4' DIAMETER MANHOLE TO FACILITATE REPLACEMENT OF EXISTING 12" VCP SEWER PIPE WITH PROPOSED 12" DUCTILE IRON SEWER PIPE.
 7. PROPOSED CASING PIPE TO BE 15' LONG, 18" DIAMETER (NOMINAL SIZE) WITH 0.312" (MINIMUM) THICK WALLS AND NO COATING APPLIED TO INTERIOR OR EXTERIOR SURFACES. INSTALL CASING PIPE CENTERED VERTICALLY AND HORIZONTALLY IN WALL SLEEVES OF ALUMINUM ARCH PIPE. DO NOT USE "SPIDERS" OR ANY OTHER TYPE OF SPACERS TO SUPPORT SEWER PIPE INSIDE ENCASEMENT.
 8. SEAL ENDS OF ENCASEMENT PIPE AROUND SEWER PIPE USING PREFABRICATED FLEXIBLE "PULL ON" END SEALS. INSTALLATION OF THESE SEALS SHALL BE INCIDENTAL TO THE "18" ENCASEMENT PIPE" PAY ITEM.
 9. PLACE #67 STONE FROM 2" BELOW (SEWER PIPE BELLS) TO 6" ABOVE SEWER AND CASING PIPES.