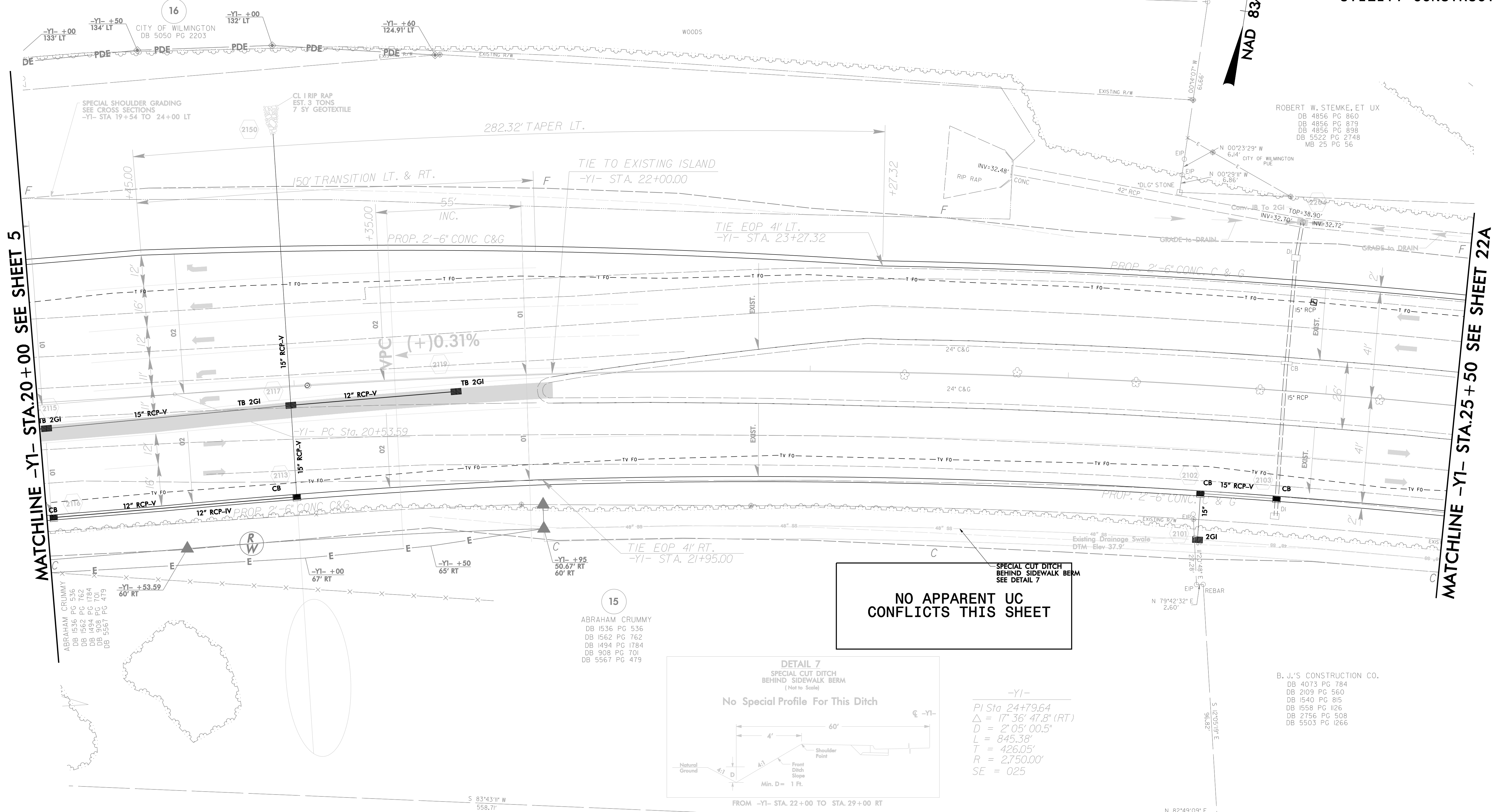


PROJECT REFERENCE NO. U-3338B	SHEET NO. UC-22
SCALE: 10 0 20	
UTILITY CONSTRUCTION	

RICHARD A. BROWN, HEIRS
DB 719 PG 521

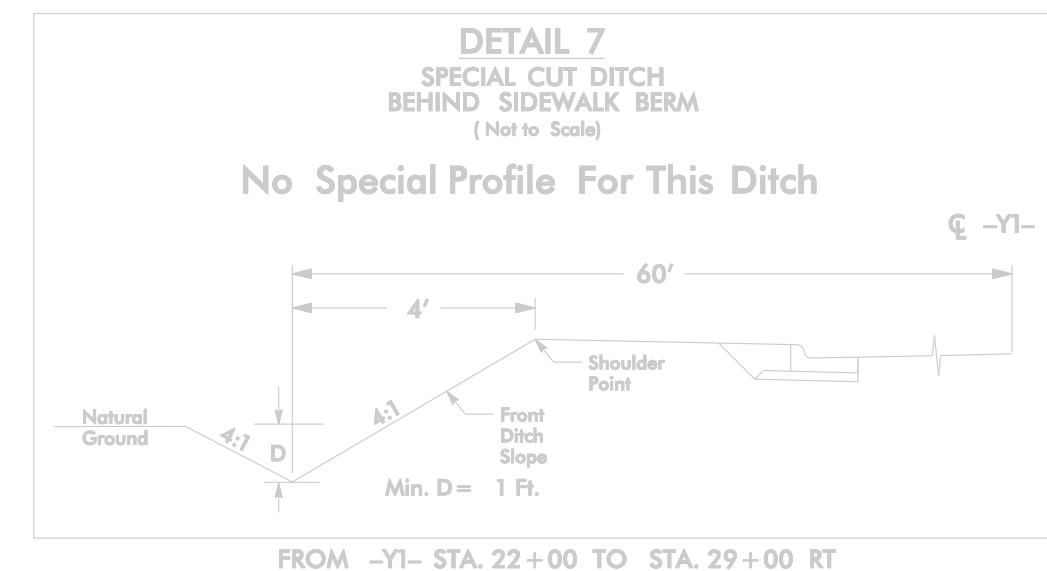
NAD 83/95



MATCHLINE -Y1- STA.20+00 SEE SHEET 5

MATCHLINE -Y1- STA.25+50 SEE SHEET 22A

NO APPARENT UC CONFLICTS THIS SHEET



-Y1-

PI Sta 24+79.64
 $\Delta = 17^{\circ}36'47.8''$ (RT)
 $D = 2^{\circ}05'00.5''$
 $L = 845.38'$
 $T = 426.05'$
 $R = 2,750.00'$
 $SE = 025$

ABRAHAM CRUMMY
 DB 1536 PG 536
 DB 1562 PG 762
 DB 1494 PG 1784
 DB 908 PG 701
 DB 5567 PG 479

15
 ABRAHAM CRUMMY
 DB 1536 PG 536
 DB 1562 PG 762
 DB 1494 PG 1784
 DB 908 PG 701
 DB 5567 PG 479

B. J.'S CONSTRUCTION CO.
 DB 4073 PG 784
 DB 2109 PG 560
 DB 1540 PG 815
 DB 1558 PG 1126
 DB 2756 PG 508
 DB 5503 PG 1266

THIEN NGUYEN
 DB 4623 PG 499
 DB 4890 PG 703

DATE: 6/16/2015
DRAWN: 033380 uc.pdf, 222.dgn

Prepared by:

AECOM

AECOM TECHNICAL SERVICES OF NORTH CAROLINA, INC.
 701 CORPORATE CENTER DRIVE, SUITE 475, RALEIGH, NC 27607
 919-854-6200 919-854-6259 (fax)