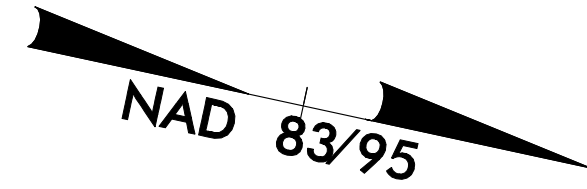


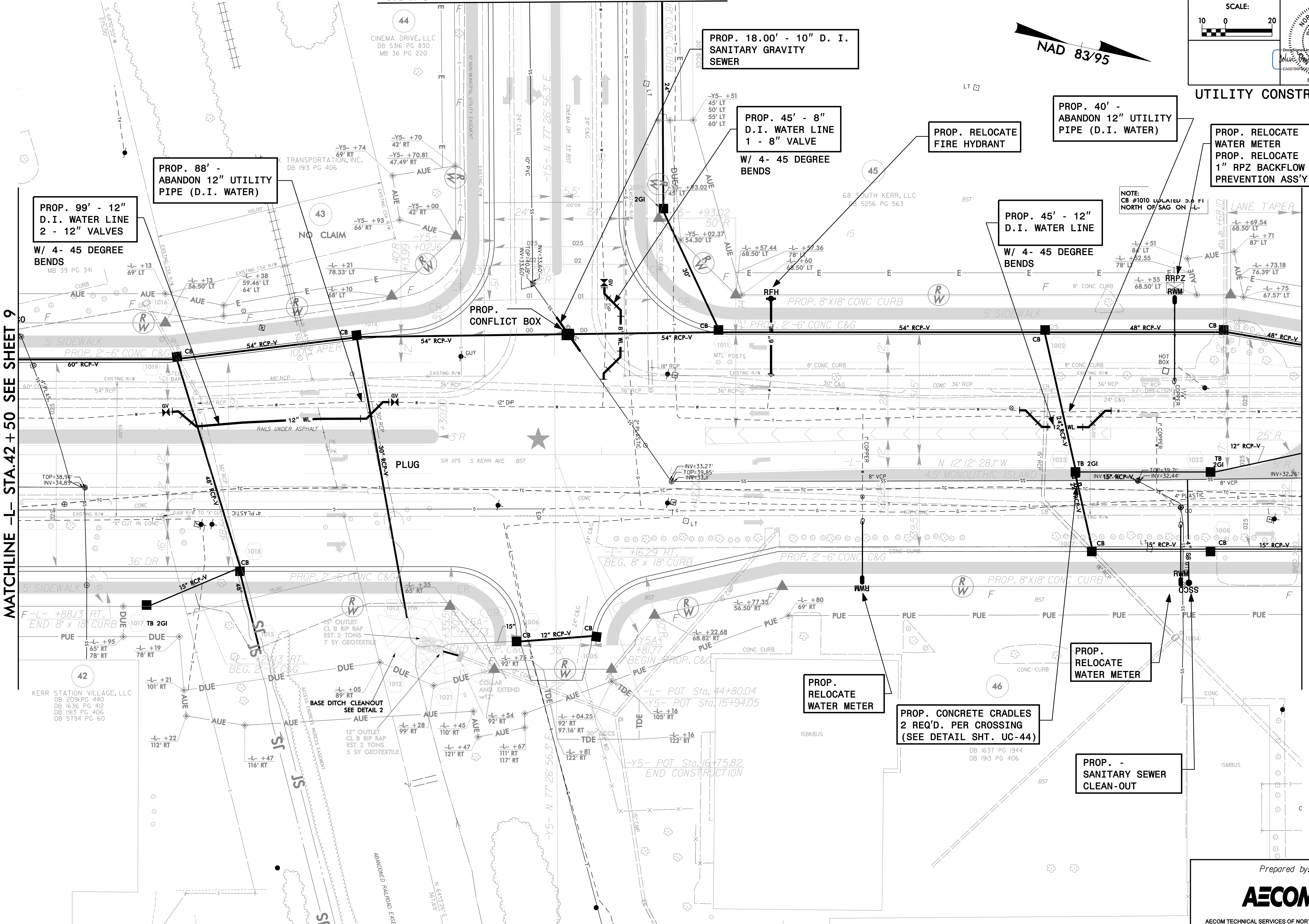
MATCHLINE -Y5- STA.14+00 SEE SHEET 24

PROJECT REFERENCE NO. U-3338B	SHEET NO. UC-10
SCALE: 10 0 20	
UTILITY CONSTRUCTION	



MATCHLINE -L- STA.42+50 SEE SHEET 9

MATCHLINE -L- STA.48+00 SEE SHEET 11



PROP. 99' - 12" D.I. WATER LINE
2 - 12" VALVES
W/ 4- 45 DEGREE BENDS

PROP. 88' - ABANDON 12" UTILITY PIPE (D.I. WATER)

PROP. 18.00' - 10" D. I. SANITARY GRAVITY SEWER

PROP. 45' - 8" D.I. WATER LINE
1 - 8" VALVE
W/ 4- 45 DEGREE BENDS

PROP. RELOCATE FIRE HYDRANT

PROP. 40' - ABANDON 12" UTILITY PIPE (D.I. WATER)

PROP. RELOCATE WATER METER
PROP. RELOCATE 1" RPZ BACKFLOW PREVENTION ASS'Y.

PROP. 45' - 12" D.I. WATER LINE
W/ 4- 45 DEGREE BENDS

NOTE: CB #1010 LOCATED 3.6 FT NORTH OF SAG ON -L-

PROP. RELOCATE WATER METER

PROP. CONCRETE CRADLES
2 REQ'D. PER CROSSING
(SEE DETAIL SHT. UC-44)

PROP. RELOCATE WATER METER

PROP. - SANITARY SEWER CLEAN-OUT