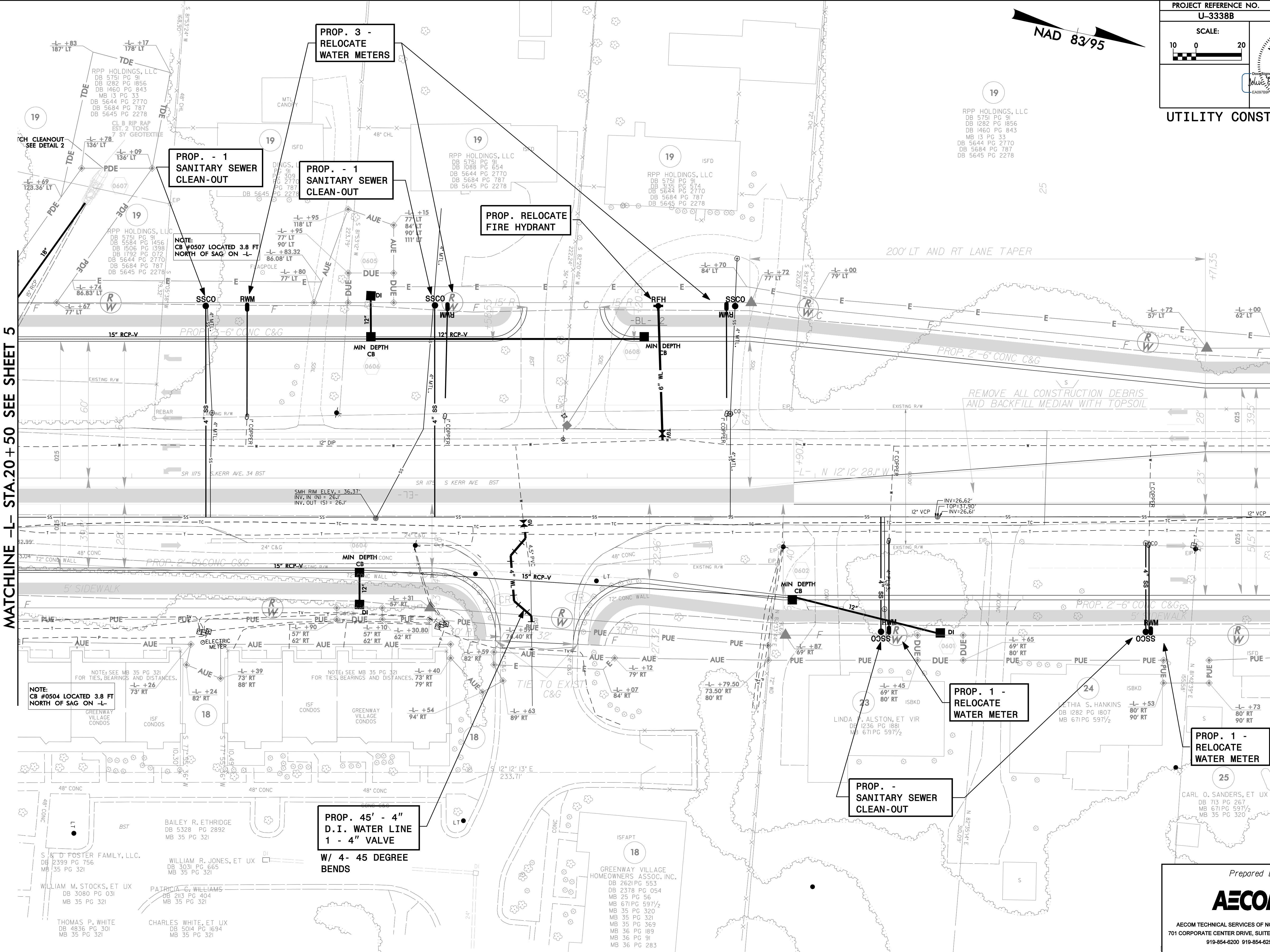
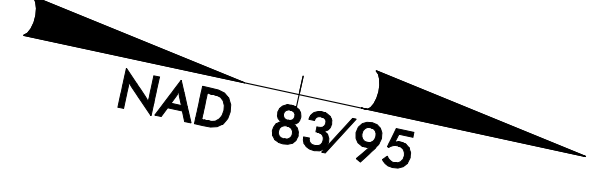


PROJECT REFERENCE NO. U-3338B	SHEET NO. UC-6
SCALE: 10 0 20	
UTILITY CONSTRUCTION	



MATCHLINE -L- STA.20 + 50 SEE SHEET 5

MATCHLINE -L- STA.26 + 00 SEE SHEET 7

NOTE: SEE MB 35 PG 321 FOR TIES, BEARINGS AND DISTANCES.  
NOTE: CB #0504 LOCATED 3.8 FT NORTH OF SAG ON -L-

NOTE: CB #0507 LOCATED 3.8 FT NORTH OF SAG ON -L-

PROP. 45' - 4" D.I. WATER LINE  
1 - 4" VALVE  
W/ 4- 45 DEGREE BENDS

PROP. 1 - RELOCATE WATER METER

PROP. 1 - RELOCATE WATER METER

PROP. - SANITARY SEWER CLEAN-OUT

PROP. RELOCATE FIRE HYDRANT

PROP. - 1 SANITARY SEWER CLEAN-OUT

PROP. - 1 SANITARY SEWER CLEAN-OUT

PROP. 3 - RELOCATE WATER METERS

RPP HOLDINGS, LLC  
DB 5751 PG 91  
DB 1282 PG 1856  
DB 1460 PG 843  
MB 13 PG 33  
DB 5644 PG 2770  
DB 5684 PG 787  
DB 5645 PG 2278

RPP HOLDINGS, LLC  
DB 5751 PG 91  
DB 1282 PG 1856  
DB 1460 PG 843  
MB 13 PG 33  
DB 5644 PG 2770  
DB 5684 PG 787  
DB 5645 PG 2278

RPP HOLDINGS, LLC  
DB 5751 PG 91  
DB 1088 PG 654  
DB 5644 PG 2770  
DB 5684 PG 787  
DB 5645 PG 2278

RPP HOLDINGS, LLC  
DB 5751 PG 91  
DB 3135 PG 574  
DB 5644 PG 2770  
DB 5684 PG 787  
DB 5645 PG 2278

WILLIAM M. STOCKS, ET UX  
DB 3080 PG 031  
MB 35 PG 321

THOMAS P. WHITE  
DB 4836 PG 301  
MB 35 PG 321

PATRICIA C. WILLIAMS  
DB 2113 PG 404  
MB 35 PG 321

CHARLES WHITE, ET UX  
DB 5014 PG 1694  
MB 35 PG 321

NOTE: SEE MB 35 PG 321 FOR TIES, BEARINGS AND DISTANCES.

NOTE: SEE MB 35 PG 321 FOR TIES, BEARINGS AND DISTANCES.

Prepared by:  
**AECOM**  
AECOM TECHNICAL SERVICES OF NORTH CAROLINA, INC.  
701 CORPORATE CENTER DRIVE, SUITE 475, RALEIGH, NC 27607  
919-854-6200 919-854-6259 (fax)

DATE: 6/16/2015  
DWG: U3338B\_UC\_P01.dwg