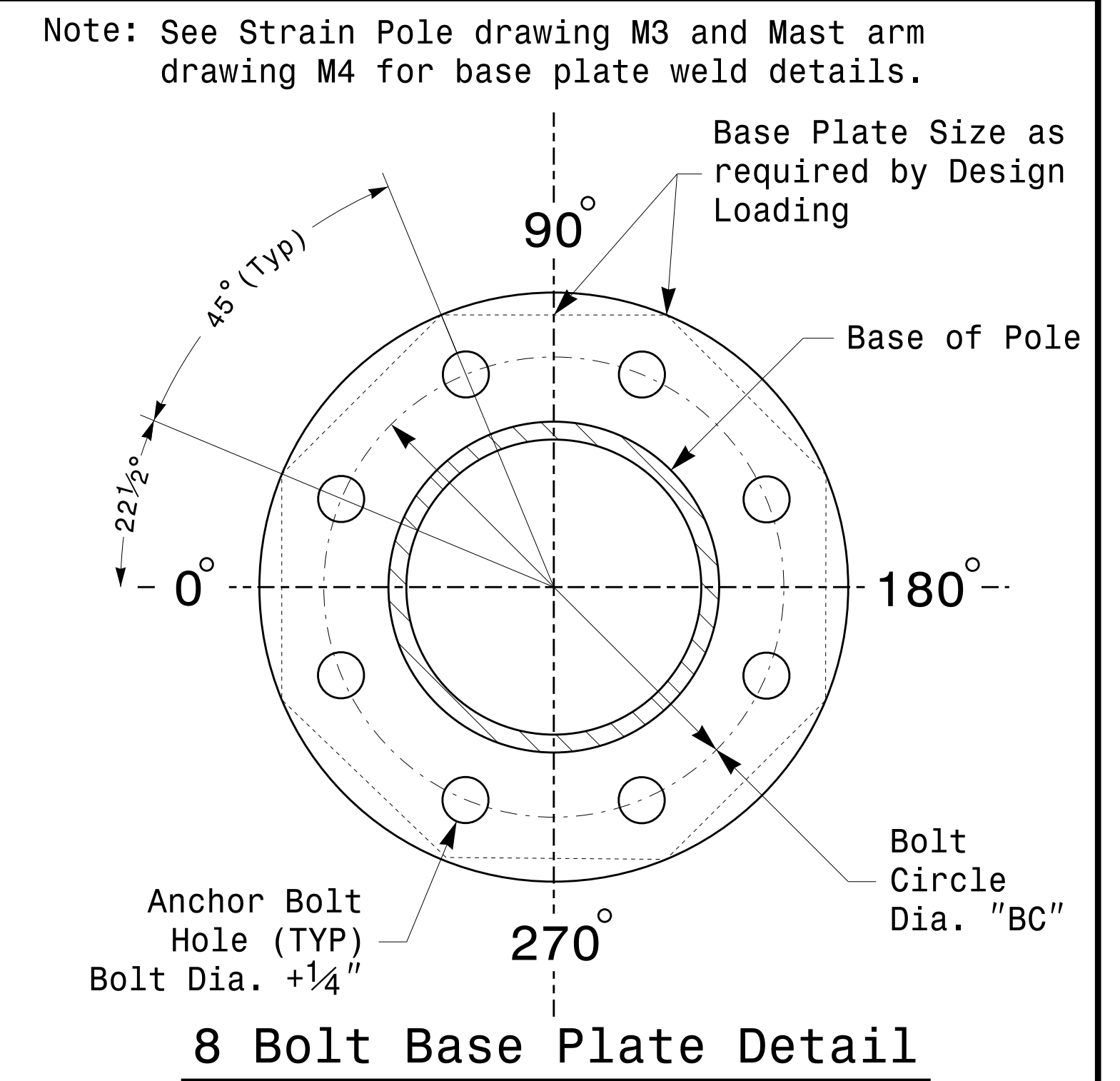
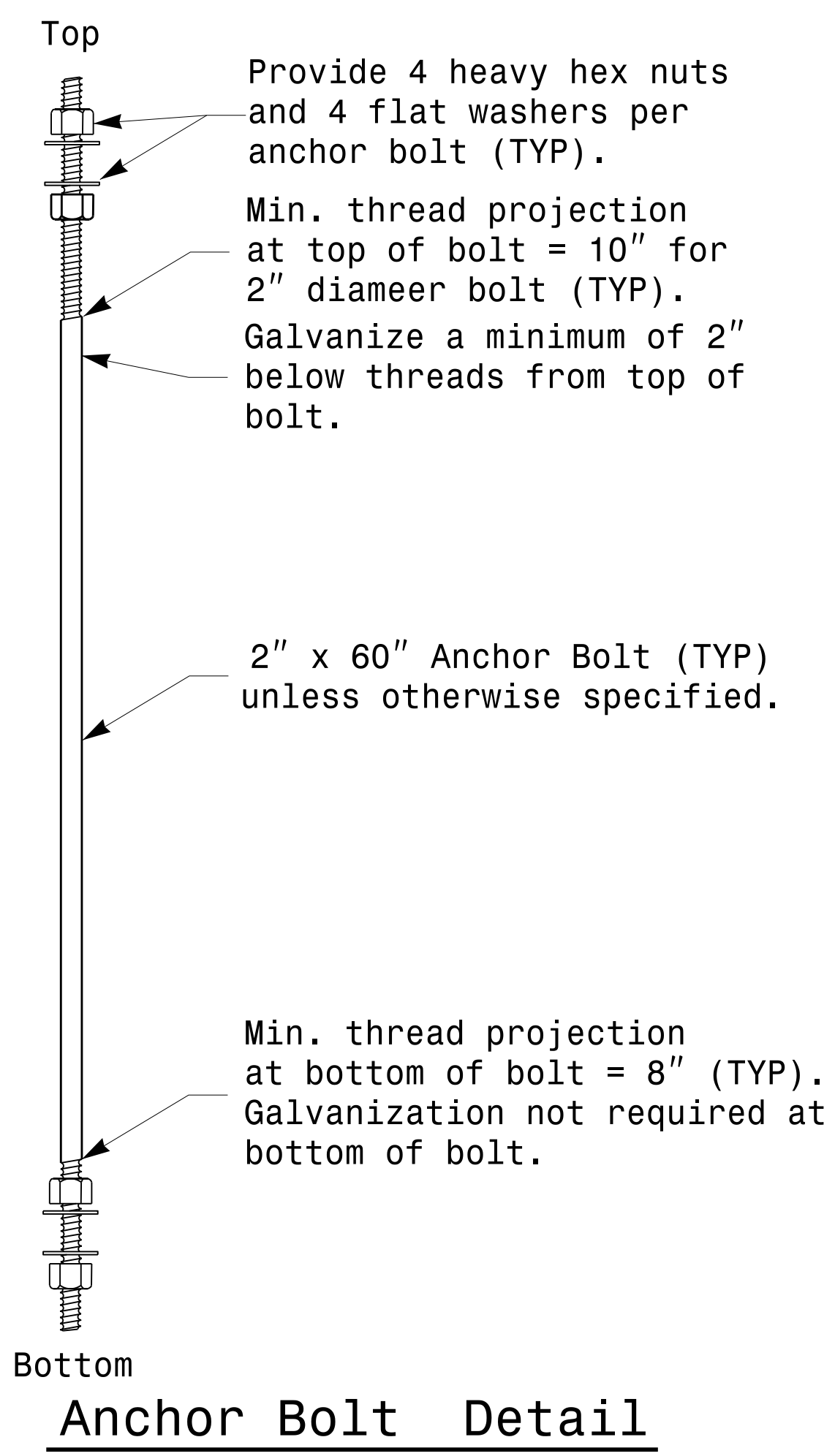


- Notes:**
- 1) D= Diameter, T= Thickness, L= Length, Y= Yield Strength
 - 2) A.B. = Anchor Bolt
 - 3) B.C. = Bolt Circle of Anchor Bolts
 - 4) If Custom Design, use "NCDOT STANDARD" line for pole I.D. number and Signal Inv. Number.
 - 5) See drawing M4 for mounting positions of I.D. tags.



	Typical Fabrication Details Common To All Metal Poles		
	PLAN DATE: AUGUST 2013 PREPARED BY: N. BITTING	DESIGNED BY: C.F. ANDREWS REVIEWED BY: D.C. SARKAR	
SCALE: NONE	REVISIONS:	INIT. DATE:	SIG. INVENTORY NO.:

06-AUG-2014 08:55
 S:\IT\3338\115_Signal\Signal Design Section\Eastern Region\M2_Fab_Details All Poles.dgn
 Top | Lowy

Fabrication Details – All Poles