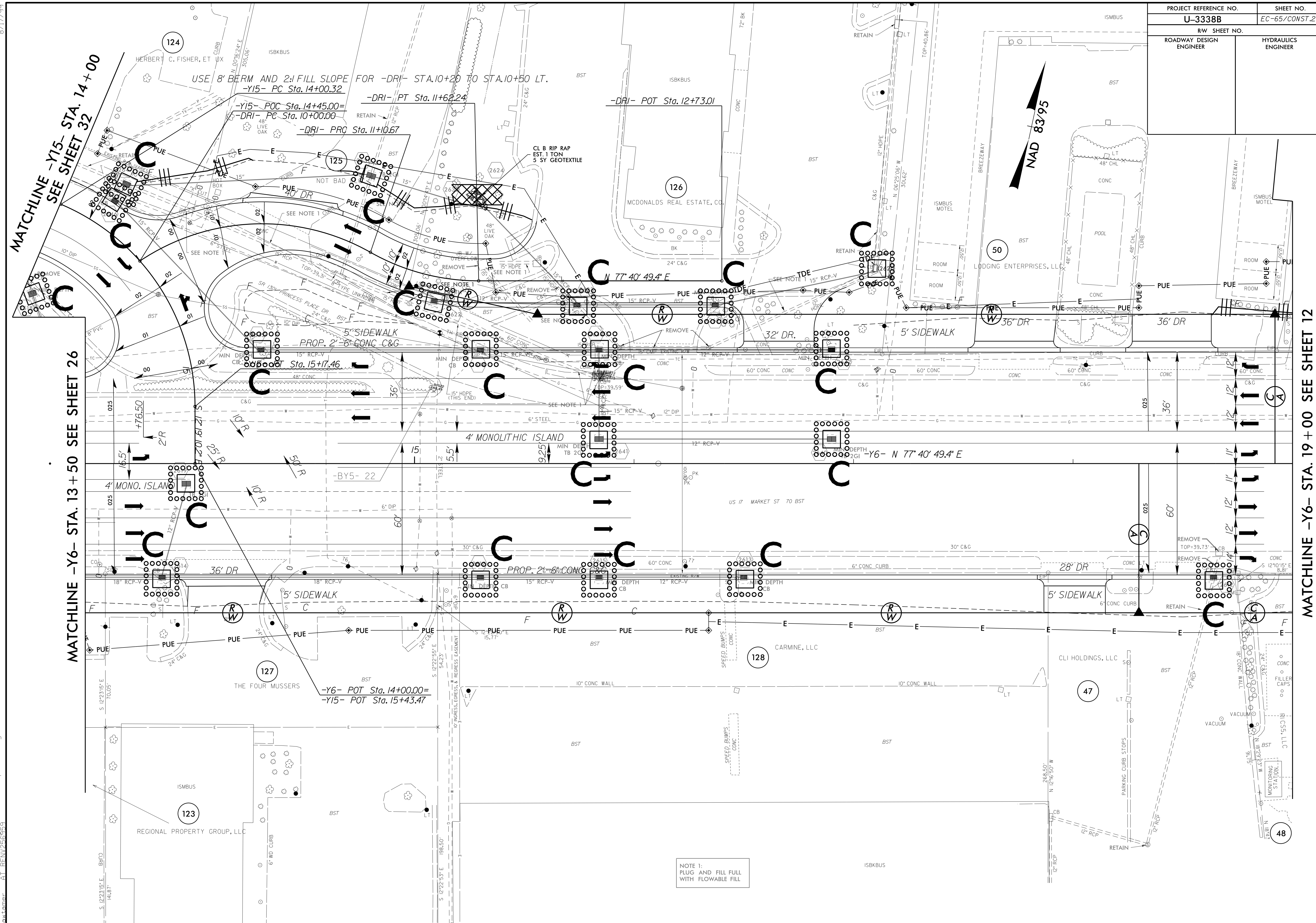


PROJECT REFERENCE NO.	SHEET NO.
U-3338B	EC-65/CONST.27
RW SHEET NO.	
ROADWAY DESIGN ENGINEER	HYDRAULICS ENGINEER

8/17/99

9/21/2015 15:57
 R:\env\p\om\m\p\U-3338b-EC.upsh.s27.dgn
 141.87'



MATCHLINE -Y15- STA. 14+00
 SEE SHEET 32

MATCHLINE -Y6- STA. 13+50 SEE SHEET 26

MATCHLINE -Y6- STA. 19+00 SEE SHEET 12

USE 8' BERM AND 2:1 FILL SLOPE FOR -DRI- STA.10+20 TO STA.10+50 LT.

-Y15- POC Sta. 14+45.00
 -DRI- PC Sta. 10+00.00

-DRI- PT Sta. 11+62.24

-DRI- POT Sta. 12+73.01

-DRI- PRO Sta. 11+10.67

CL B RIP RAP
 EST. 1 TON
 5 SY GEOTEXTILE

NAD 83/95

5' SIDEWALK
 PROP. 2'-6" CONC C&G

4' MONOLITHIC ISLAND

PROP. 2'-6" CONC C&G

5' SIDEWALK

-Y6- POT Sta. 14+00.00
 -Y15- POT Sta. 15+43.47

NOTE 1:
 PLUG AND FILL FULL
 WITH FLOWABLE FILL