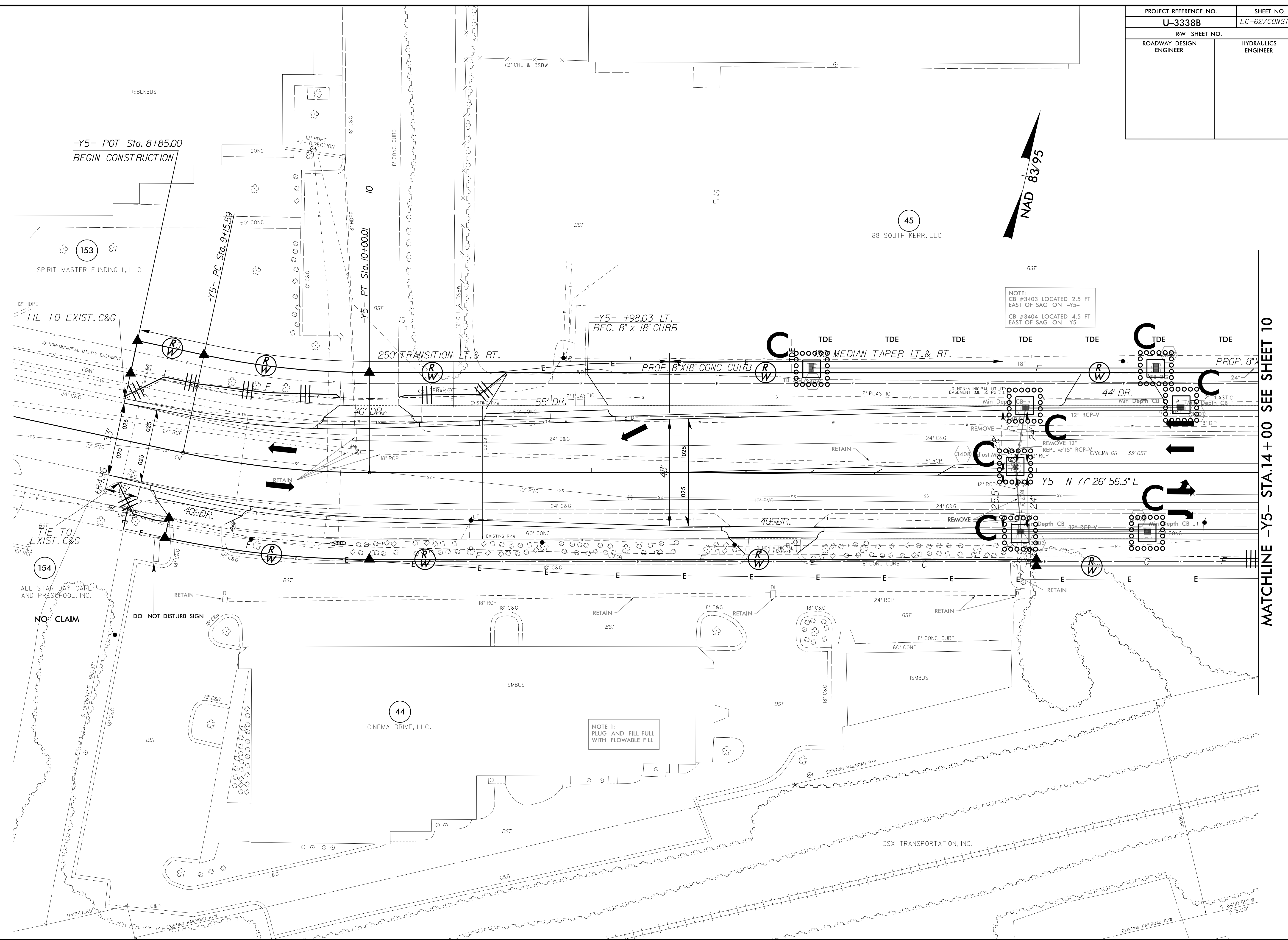


PROJECT REFERENCE NO.	SHEET NO.
U-3338B	EC-62/CONST.24
RW SHEET NO.	
ROADWAY DESIGN ENGINEER	HYDRAULICS ENGINEER

8/17/99



NOTE:
 CB #3403 LOCATED 2.5 FT EAST OF SAG ON -Y5-
 CB #3404 LOCATED 4.5 FT EAST OF SAG ON -Y5-

NOTE 1:
 PLUG AND FILL FULL WITH FLOWABLE FILL

MATCHLINE -Y5- STA.14 + 00 SEE SHEET 10

02 JAN 2015 15:46
 R:\enviroment\U-3338B\EC.upsh.s24.dgn
 A:\enviroment\U-3338B\EC.upsh.s24.dgn