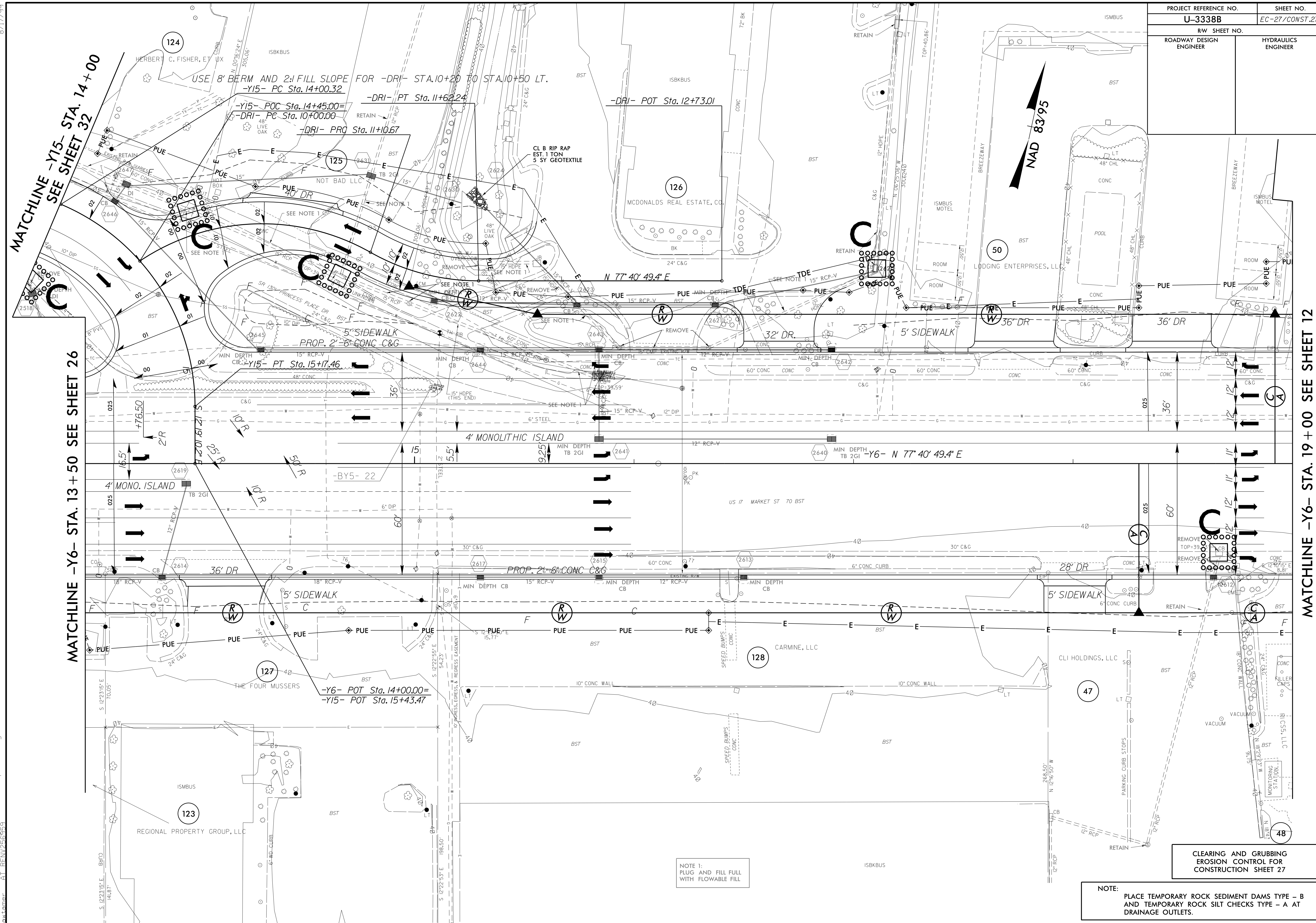


PROJECT REFERENCE NO.	SHEET NO.
U-3338B	EC-27/CONST.27
RW SHEET NO.	
ROADWAY DESIGN ENGINEER	HYDRAULICS ENGINEER

8/17/99

9/21/2015 15:57
 R:\env\p\om\p\U-3338b-EC.upsh.s27.dgn
 A:\env\p\om\p\U-3338b-EC.upsh.s27.dgn



MATCHLINE -Y15- STA. 14+00
 SEE SHEET 32

MATCHLINE -Y6- STA. 13+50 SEE SHEET 26

MATCHLINE -Y6- STA. 19+00 SEE SHEET 12

USE 8' BERM AND 2:1 FILL SLOPE FOR -DRI- STA.10+20 TO STA.10+50 LT.
 -Y15- PC Sta.14+00.32

-DRI- PT Sta.11+62.24
 -Y15- POC Sta.14+45.00
 -DRI- PC Sta.10+00.00

-DRI- PRO Sta.11+10.67

-DRI- POT Sta.12+73.01

5' SIDEWALK
 PROP. 2'-6" CONC C&G

4' MONOLITHIC ISLAND

PROP. 2'-6" CONC C&G

-Y6- POT Sta.14+00.00
 -Y15- POT Sta.15+43.47

NOTE 1:
 PLUG AND FILL FULL
 WITH FLOWABLE FILL

NOTE:
 PLACE TEMPORARY ROCK SEDIMENT DAMS TYPE - B
 AND TEMPORARY ROCK SILT CHECKS TYPE - A AT
 DRAINAGE OUTLETS.

