

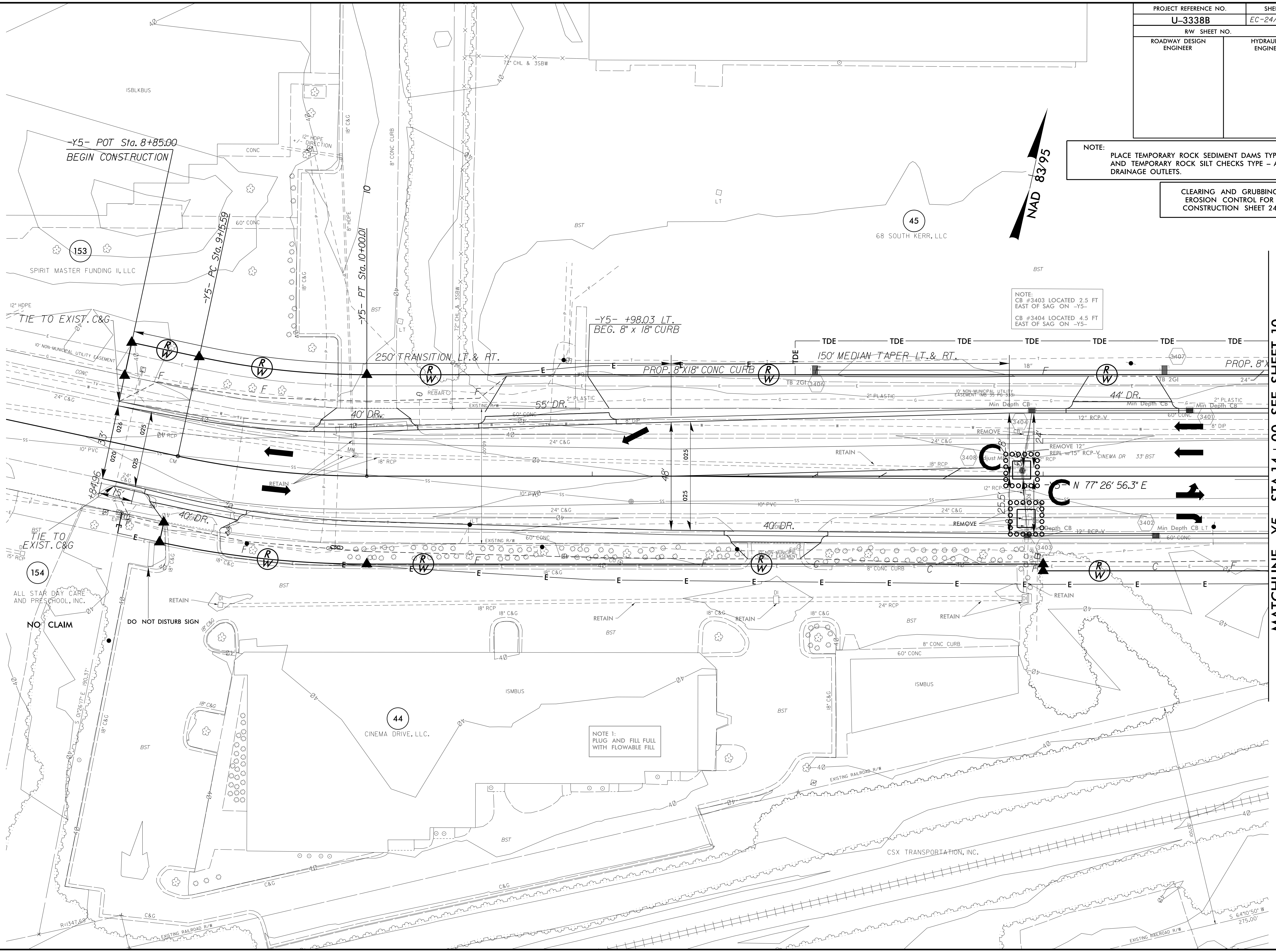
PROJECT REFERENCE NO.	SHEET NO.
U-3338B	EC-24/CONST-24
RW SHEET NO.	
ROADWAY DESIGN ENGINEER	HYDRAULICS ENGINEER

NOTE: PLACE TEMPORARY ROCK SEDIMENT DAMS TYPE - B AND TEMPORARY ROCK SILT CHECKS TYPE - A AT DRAINAGE OUTLETS.

CLEARING AND GRUBBING EROSION CONTROL FOR CONSTRUCTION SHEET 24

NOTE: CB #3403 LOCATED 2.5 FT EAST OF SAG ON -Y5-  
CB #3404 LOCATED 4.5 FT EAST OF SAG ON -Y5-

MATCHLINE -Y5- STA.14 + 00 SEE SHEET 10



8/17/99

92 JAN-2015 15:46  
R:\enviroment\U-3338B\EC.upsh.s24.dgn  
A:\enviroment\U-3338B\EC.upsh.s24.dgn

NOTE 1:  
PLUG AND FILL FULL  
WITH FLOWABLE FILL

ALL STAR DAY CARE  
AND PRESCHOOL, INC.

NO CLAIM

DO NOT DISTURB SIGN

CSX TRANSPORTATION, INC.

-Y5- POT Sta. 8+85.00  
BEGIN CONSTRUCTION

-Y5- PC Sta. 9+75.59

-Y5- PT Sta. 10+00.01

-Y5- +98.03 LT.  
BEG. 8' x 18' CURB

250' TRANSITION LT. & RT.

PROP. 18'x18' CONC CURB

150' MEDIAN TAPER LT. & RT.

N 77° 26' 56.3" E

NAD 83/95

TIE TO EXIST. C&G

TIE TO EXIST. C&G

NO CLAIM

DO NOT DISTURB SIGN

CSX TRANSPORTATION, INC.

-Y5- POT Sta. 8+85.00  
BEGIN CONSTRUCTION

-Y5- PC Sta. 9+75.59

-Y5- PT Sta. 10+00.01

-Y5- +98.03 LT.  
BEG. 8' x 18' CURB

250' TRANSITION LT. & RT.

PROP. 18'x18' CONC CURB

150' MEDIAN TAPER LT. & RT.

N 77° 26' 56.3" E

NAD 83/95

TIE TO EXIST. C&G

TIE TO EXIST. C&G

NO CLAIM

DO NOT DISTURB SIGN

CSX TRANSPORTATION, INC.