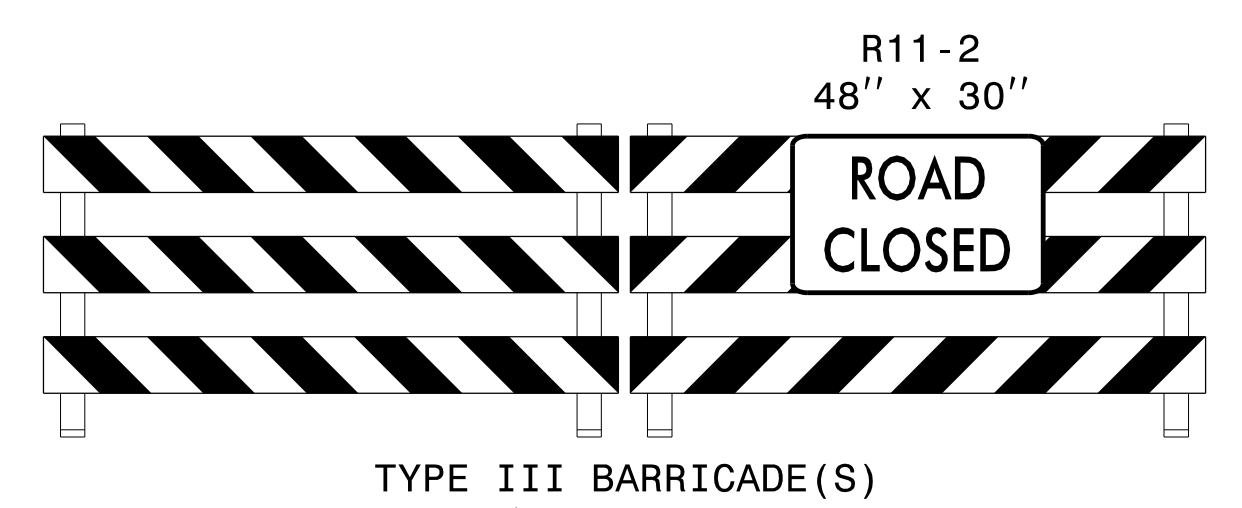
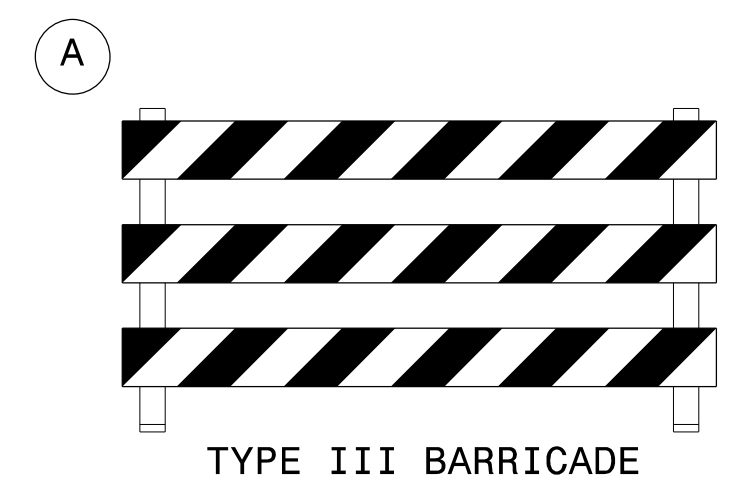


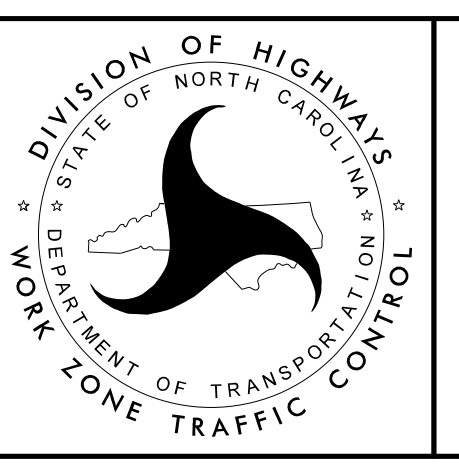
SEE LN-2
(APPLY -L- STA 67+50 +/- TO -L- STA 87+23 +/-)



09-JUL-2015 15:37
 C:\Users\jpc\Documents\Projects\U3338B\Kerr TMP\FOR NCDOT\U3338B_TC_TCP_IL.dgn
 AT-DUS230140

ATKINS 1616 EAST MILLBROOK ROAD, SUITE 310
 RALEIGH, NORTH CAROLINA 27609
 (919) 876-6888 NCBEES #F-0326

APPROVED: DATE: 7/9/2015



PHASE I DETAIL