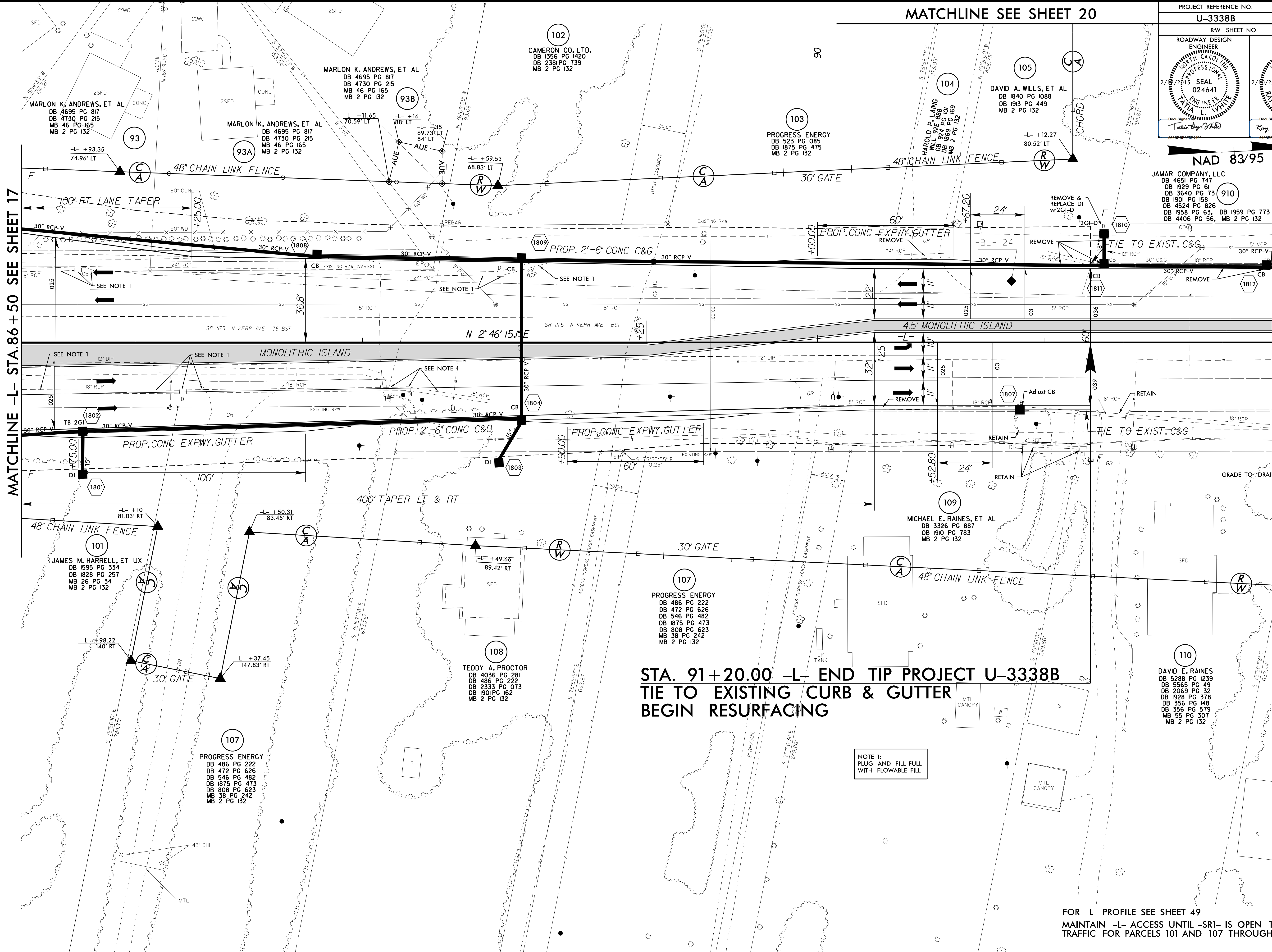


PROJECT REFERENCE NO. U-3338B	SHEET NO. 18
RW SHEET NO.	
ROADWAY DESIGN ENGINEER PROFESSIONAL SEAL 024641 TATIANA L. WHITE	HYDRAULICS ENGINEER PROFESSIONAL SEAL 019775 RAY D. LIVINGOOD

NAD 83/95



MATCHLINE -L- STA.86+50 SEE SHEET 17

MATCHLINE -L- STA.92+00 SEE SHEET 19

**STA. 91+20.00 -L- END TIP PROJECT U-3338B
TIE TO EXISTING CURB & GUTTER
BEGIN RESURFACING**

NOTE 1:
PLUG AND FILL FULL
WITH FLOWABLE FILL

FOR -L- PROFILE SEE SHEET 49
MAINTAIN -L- ACCESS UNTIL -SR1- IS OPEN TO
TRAFFIC FOR PARCELS 101 AND 107 THROUGH 110

REVISONS

8/17/99
13 JAN-2015 14:19 N:\33338B_rdl.psh.stb.dgn
33338B.DWG