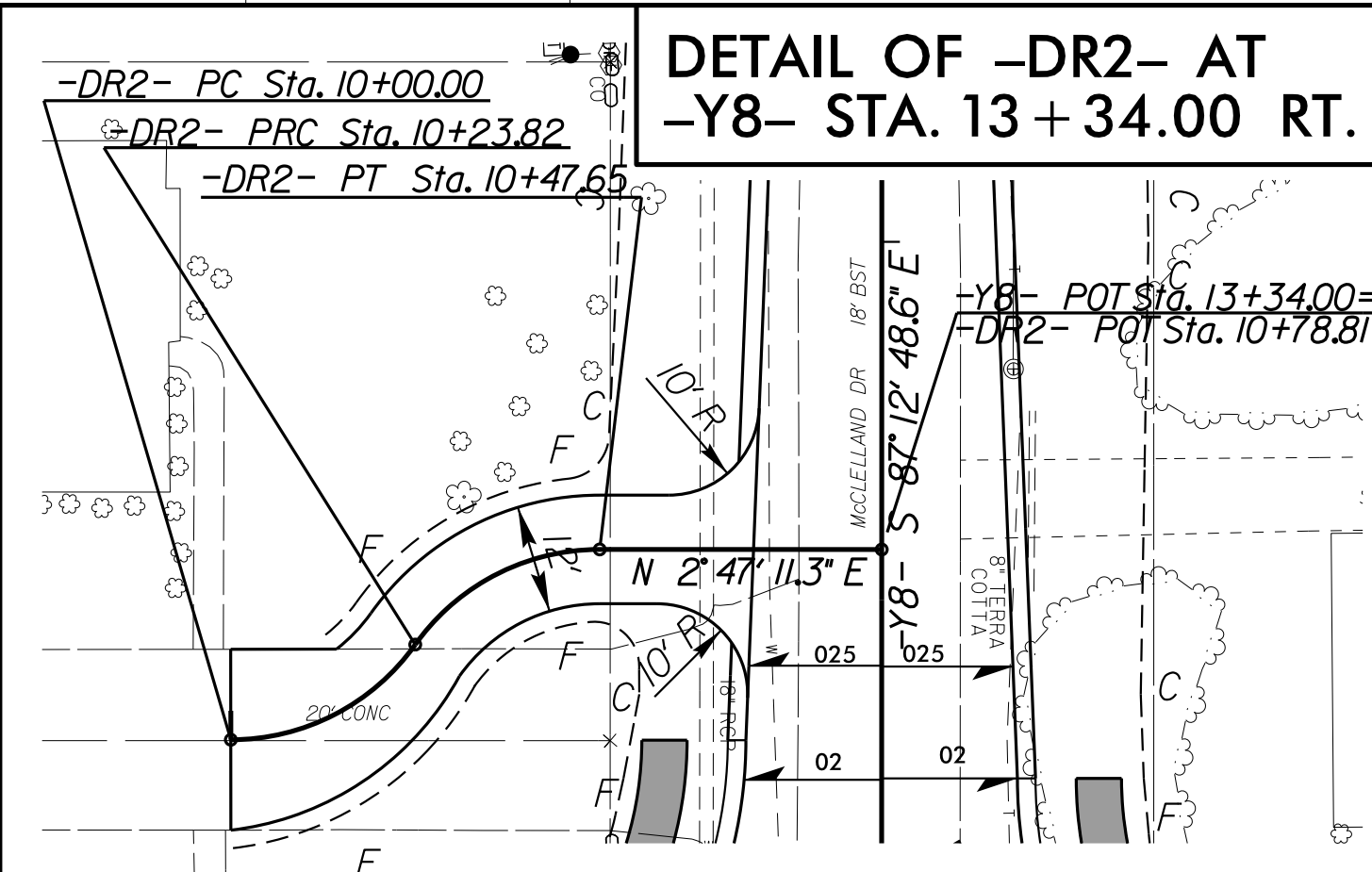
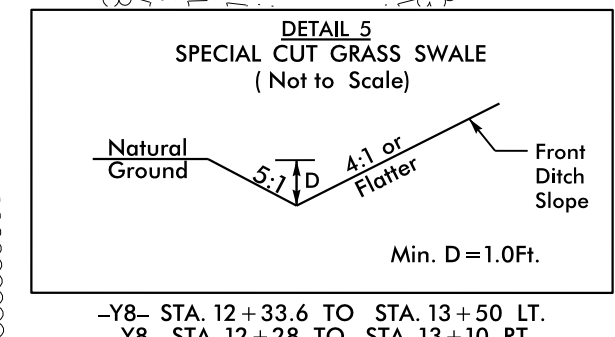
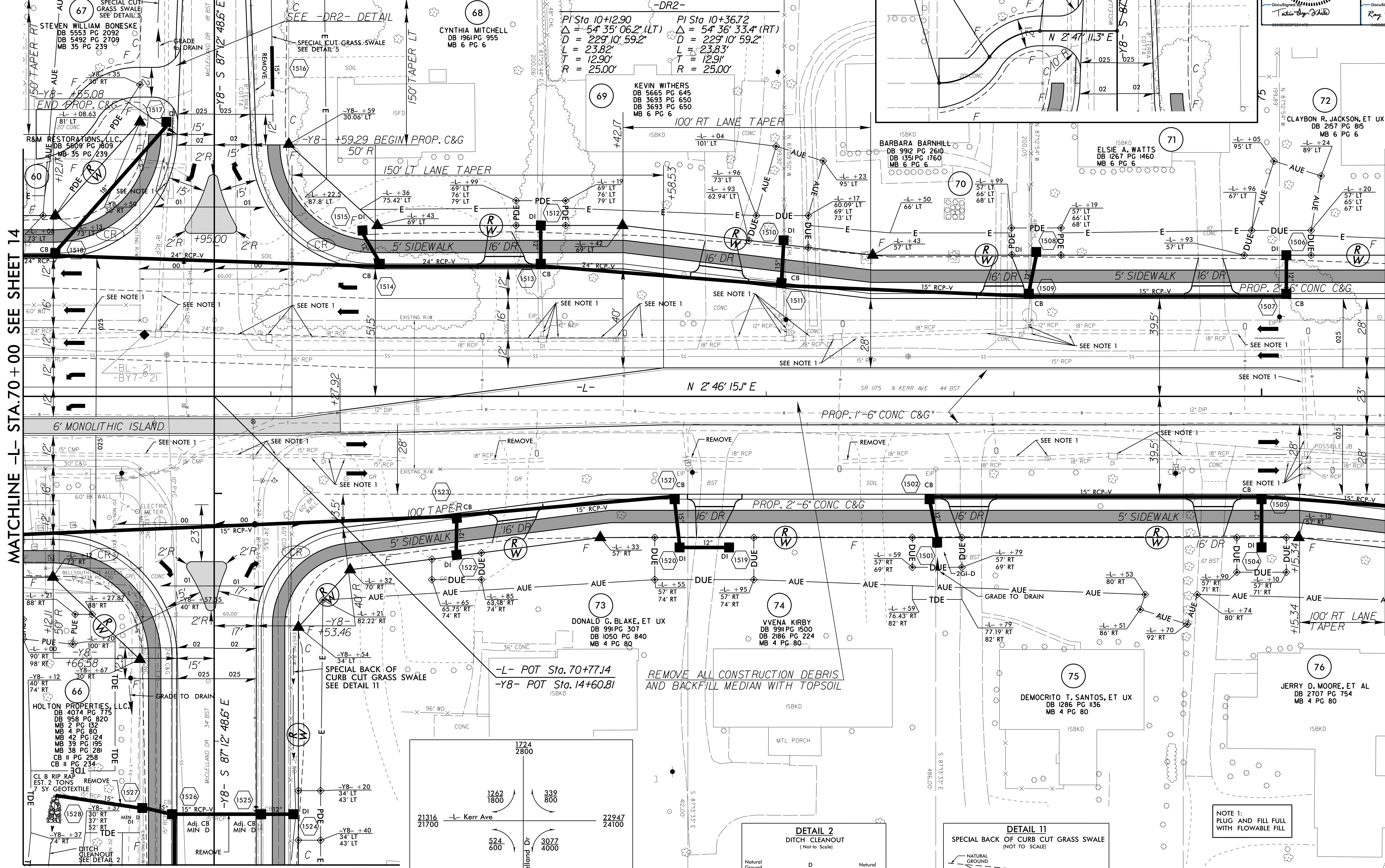


PROJECT REFERENCE NO. U-3338B	SHEET NO. 15
RW SHEET NO.	
ROADWAY DESIGN ENGINEER TRITTA ENGINEERS, INC. SEAL 024641	HYDRAULICS ENGINEER ROY D. LOVINGGOOD SEAL 019775

NAD 83/95

MATCHLINE -Y8- STA.13+00 SEE SHEET 37



PI Sta 10+12.90
 $\Delta = 54^\circ 35' 06.2\" (LT)$
 $D = 229.10' 59.2\"$
 $L = 23.82'$
 $T = 12.90'$
 $R = 25.00'$

PI Sta 10+36.72
 $\Delta = 54^\circ 36' 33.4\" (RT)$
 $D = 229.10' 59.2\"$
 $L = 23.83'$
 $T = 12.91'$
 $R = 25.00'$

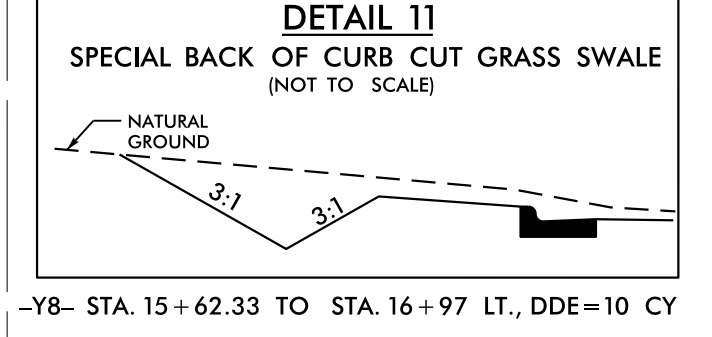
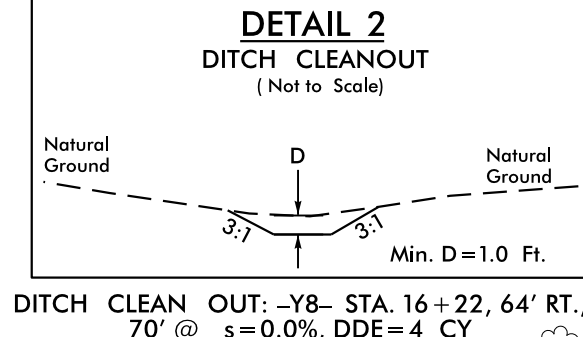
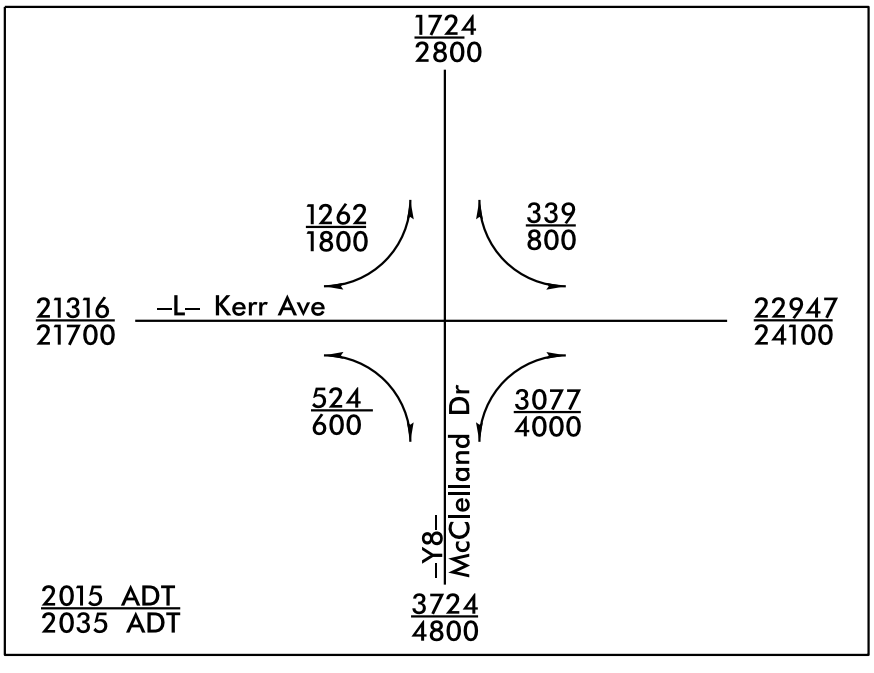
KEVIN WITHERS
 DB 5665 PG 645
 DB 3693 PG 650
 DB 3693 PG 650
 MB 6 PG 6

100' RT LANE TAPER

MATCHLINE -L- STA.70+00 SEE SHEET 14

MATCHLINE -L- STA.75+50 SEE SHEET 16

MATCHLINE -Y8- STA.16+50 SEE SHEET 38



NOTE 1:
 PLUG AND FILL FULL WITH FLOWABLE FILL

FOR -L- PROFILE SEE SHEET 47
 FOR -Y8- PROFILE SEE SHEET 60
 FOR -DR2- PROFILE SEE SHEET 60

REVISIONS

8/17/99

15-JAN-2015 08:43 33338B_r.dwg s15.dgn