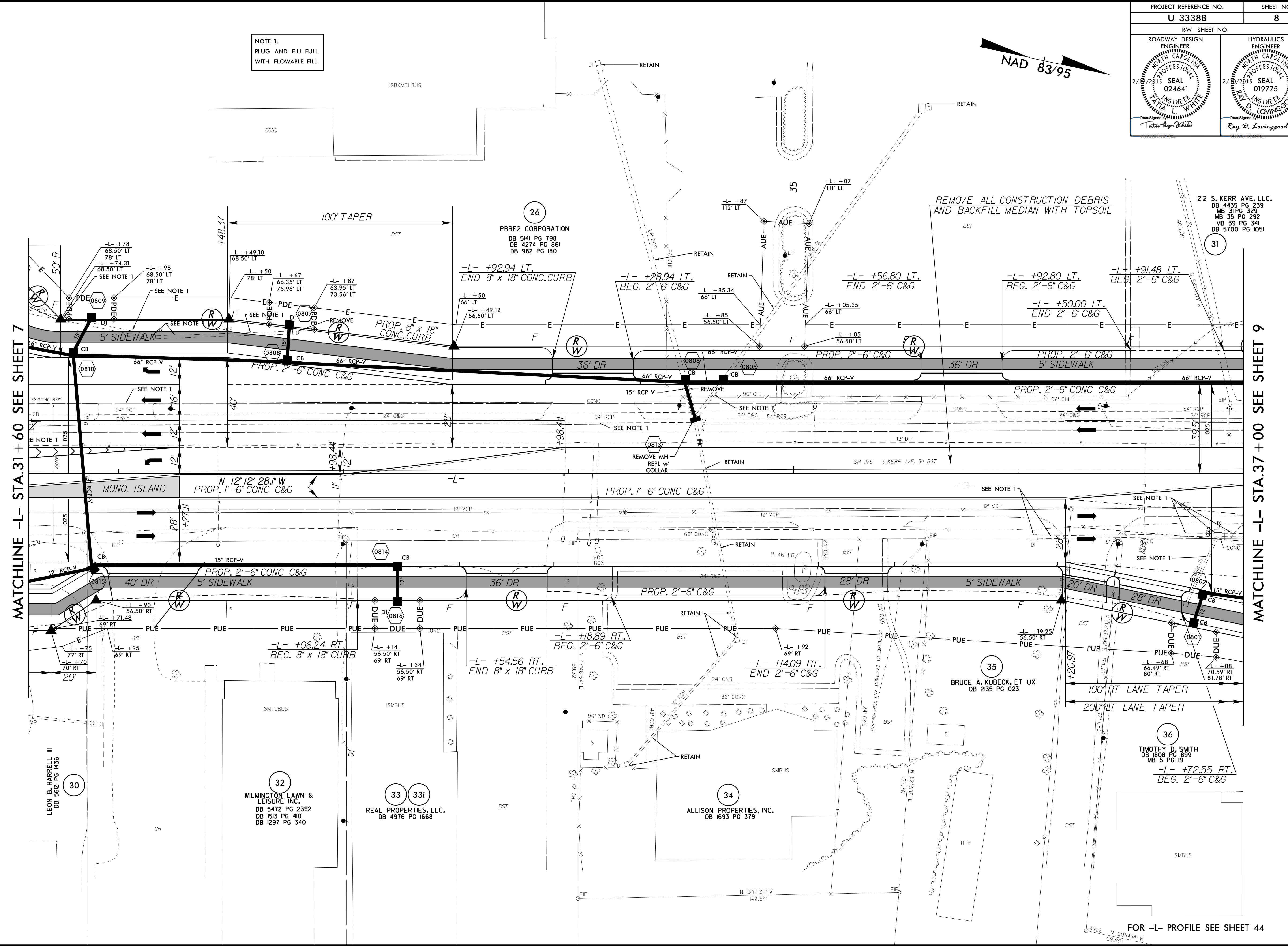


NOTE 1:  
PLUG AND FILL FULL WITH FLOWABLE FILL



MATCHLINE -L- STA.31+60 SEE SHEET 7

MATCHLINE -L- STA.37+00 SEE SHEET 9

REVISIONS

8/17/99

3 JAN 2015 14:20 \\s3338b\_rdl\_psh\_s08.dgn  
3338B.DWG

30  
LEON B. HARRELL III  
DB 5662 PG 1436

32  
WILMINGTON LAWN & LEISURE INC.  
DB 5472 PG 2392  
DB 1513 PG 410  
DB 1297 PG 340

33 33i  
REAL PROPERTIES, LLC.  
DB 4976 PG 1668

34  
ALLISON PROPERTIES, INC.  
DB 1633 PG 379

35  
BRUCE A. KUBECK, ET UX  
DB 2135 PG 023

36  
TIMOTHY D. SMITH  
DB 808 PG 899  
MB 5 PG 19  
-L- +72.55 RT.  
BEG. 2'-6" C&G

212 S. KERR AVE, LLC.  
DB 4435 PG 239  
MB 31 PG 329  
MB 39 PG 292  
DB 5700 PG 1051

FOR -L- PROFILE SEE SHEET 44