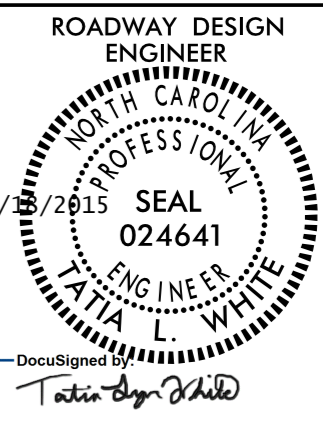
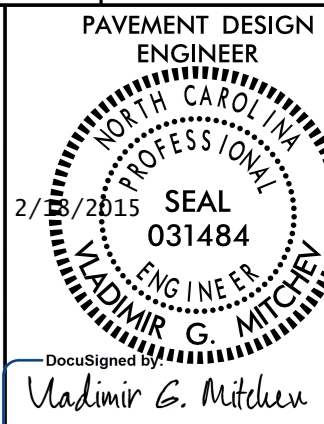


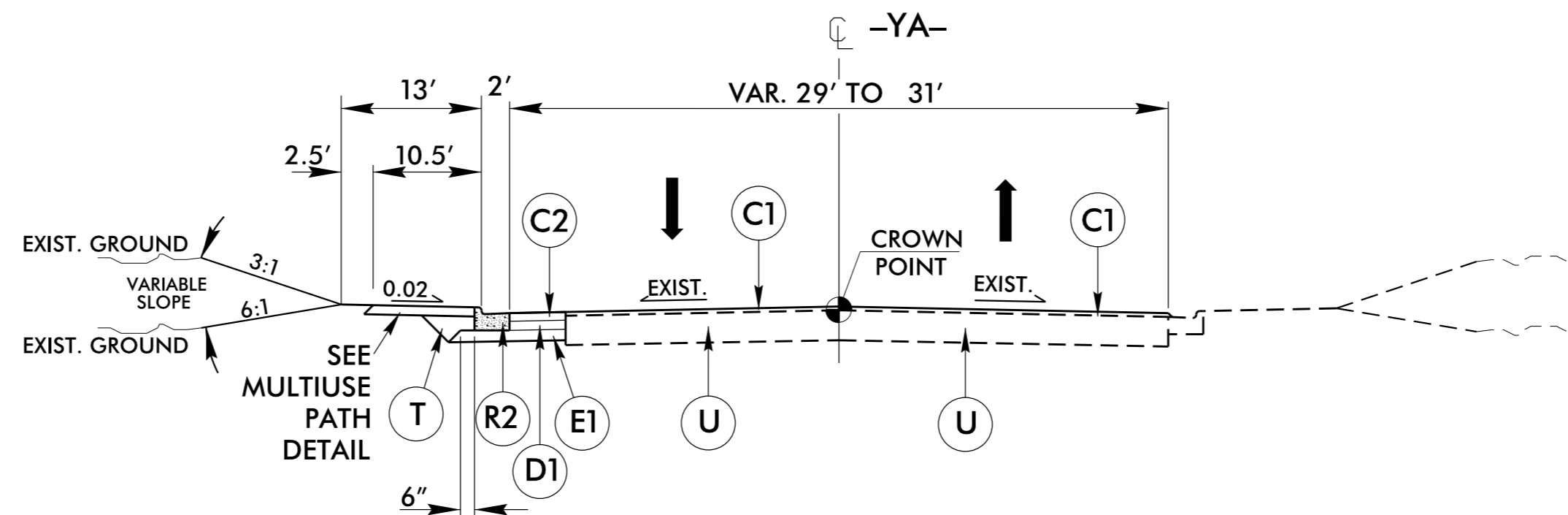
6/2/99

PAVEMENT SCHEDULE (FINAL PAVEMENT DESIGN)	
C1	1½" S9.5B
C2	3" S9.5B
C3	VAR. S9.5B
C4	1½" S9.5C
C5	3" S9.5C
C6	VAR. S9.5C
C7	2" SF9.5A
D1	4" I19.0B
D2	VAR. I19.0B
D3	4" I19.0C
D4	VAR. I19.0C
E1	4" B25.0B
E2	5" B25.0B
E3	VAR. B25.0B
E4	4" B25.0C
E5	VAR. B25.0C
J	6" ABC
N	GEOTEXTILE FOR SOIL STAB.
R1	1' 6" C & G
R2	2'-6" C & G
R3	EXPRESSWAY C & G
R4	5" MONO. ISLAND (KEYED IN)
S	4" SIDEWALK
T	EARTH MATERIAL
U	EXIST. PAVEMENT
V	1½" MILLING
W1	WEDGING DETAIL NO. 1
W2	WEDGING DETAIL NO. 2
W3	WEDGING DETAIL NO. 3
W4	WEDGING DETAIL NO. 4

NOTE: PAVEMENT EDGE SLOPES ARE 1:1 UNLESS SHOWN OTHERWISE.

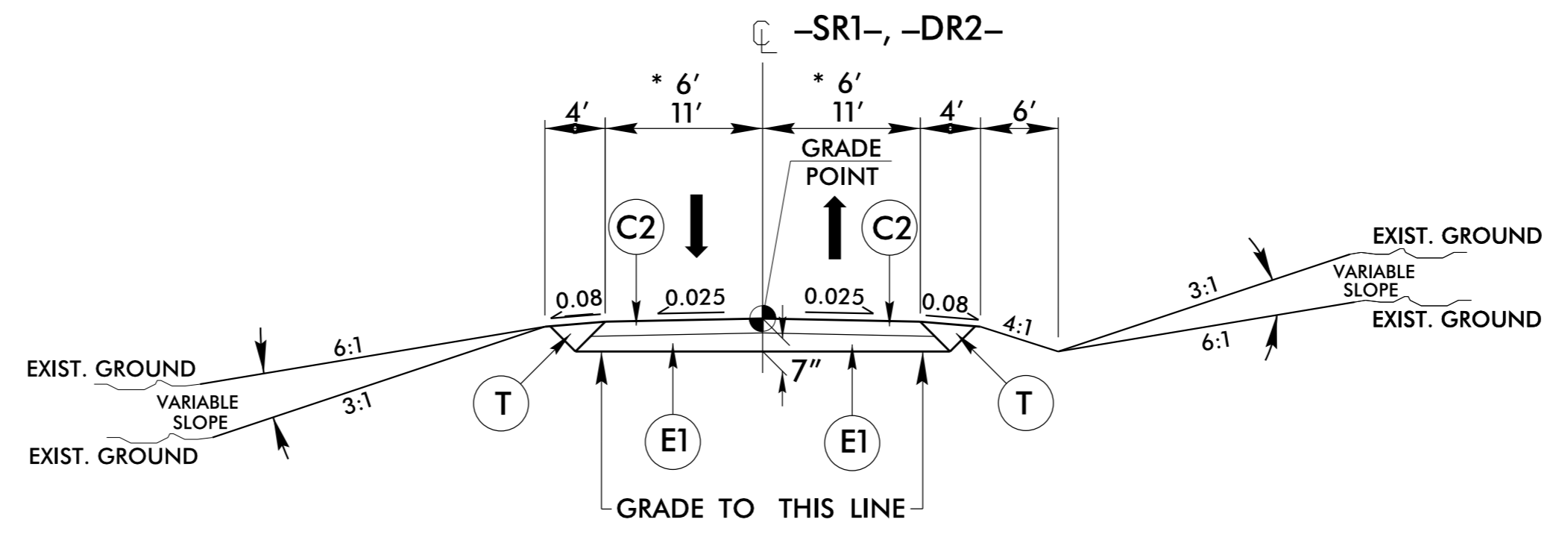
18-FEB-2015 09:17  
 I:\PROJECTS\13338B\rdy\_tjpd.dgn  
 13338B.dwg

PROJECT REFERENCE NO. <b>U-3338B</b>	SHEET NO. <b>2A-6</b>
ROADWAY DESIGN ENGINEER  <b>T. L. WHITE</b>	PAVEMENT DESIGN ENGINEER  <b>Vladimir G. Mitchev</b>



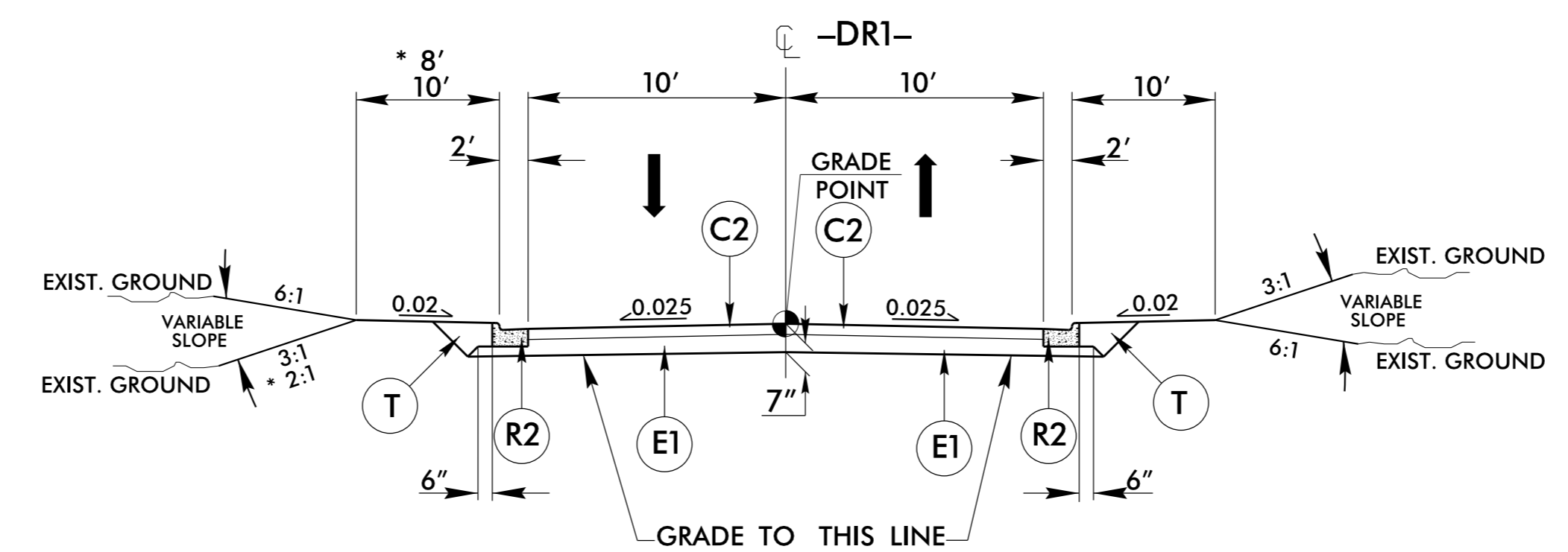
**TYPICAL SECTION NO. 15**

USE TYPICAL SECTION NO. 15  
 -YA- STA. 10+18.08 TO -YA- STA. 10+90.45



**TYPICAL SECTION NO. 16**

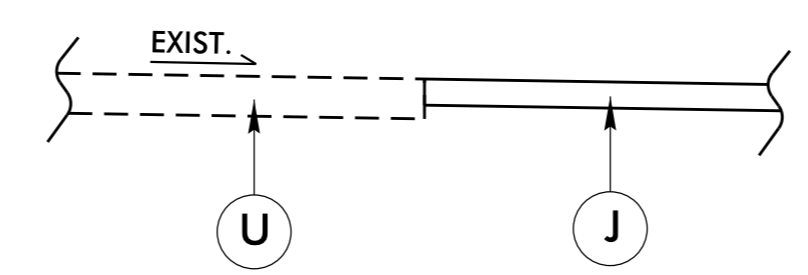
USE TYPICAL SECTION NO. 16  
 -SR1- STA. 10+16.32 TO -SR1- STA. 18+79.48  
 \* -DR2- STA. 10+00.00 TO -DR2- STA. 10+64.64



**TYPICAL SECTION NO. 17**

USE TYPICAL SECTION NO. 17  
 -DR1- STA. 10+12.21 TO -DR1- STA. 12+00.00  
 \* -DR1- STA. 10+20.00 LT. TO -DR1- STA. 10+50.00 LT.

\*TEMPORARY PAVEMENT



**TYPICAL SECTION NO. 18**

USE TYPICAL SECTION NO. 18  
 -Y1- STA. 12+81.00 TO STA. 14+25.00 LT.  
 \*SEE SHEETS TMP-4 AND TMP-13