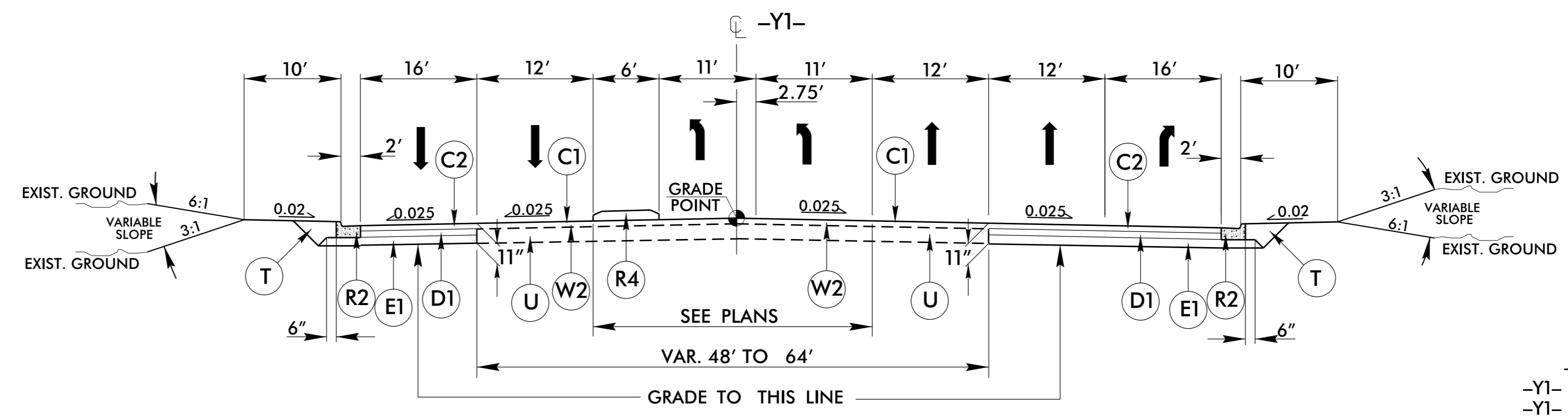


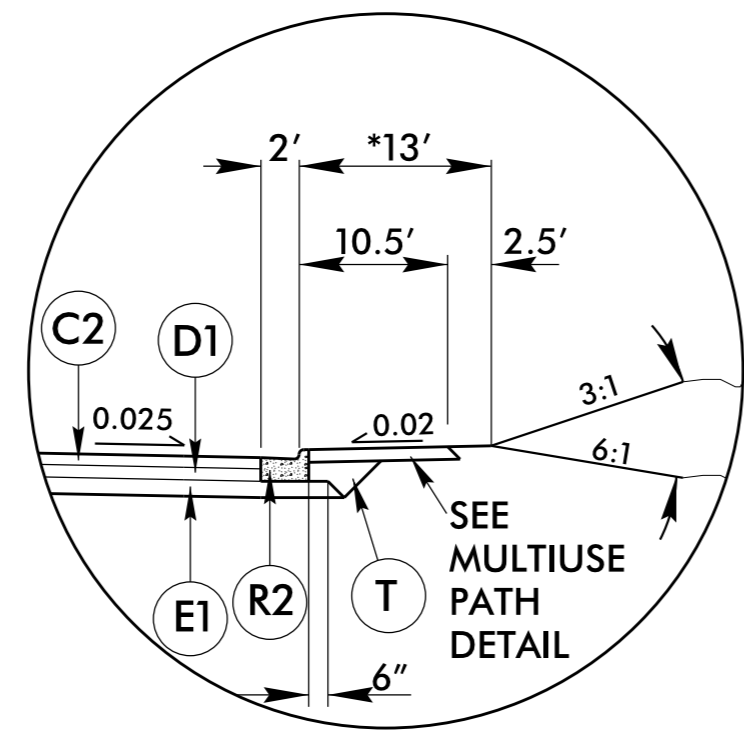
PAVEMENT SCHEDULE (FINAL PAVEMENT DESIGN)	
C1	1 1/2" S9.5B
C2	3" S9.5B
C3	VAR. S9.5B
C4	1 1/2" S9.5C
C5	3" S9.5C
C6	VAR. S9.5C
C7	2" SF9.5A
D1	4" I19.0B
D2	VAR. I19.0B
D3	4" I19.0C
D4	VAR. I19.0C
E1	4" B25.0B
E2	5" B25.0B
E3	VAR. B25.0B
E4	4" B25.0C
E5	VAR. B25.0C
J	6" ABC
N	GEOTEXTILE FOR SOIL STAB.
R1	1' 6" C & G
R2	2'-6" C & G
R3	EXPRESSWAY C & G
R4	5" MONO. ISLAND (KEYED IN)
S	4" SIDEWALK
T	EARTH MATERIAL
U	EXIST. PAVEMENT
V	1 1/2" MILLING
W1	WEDGING DETAIL NO. 1
W2	WEDGING DETAIL NO. 2
W3	WEDGING DETAIL NO. 3
W4	WEDGING DETAIL NO. 4

NOTE: PAVEMENT EDGE SLOPES ARE 1:1 UNLESS SHOWN OTHERWISE.



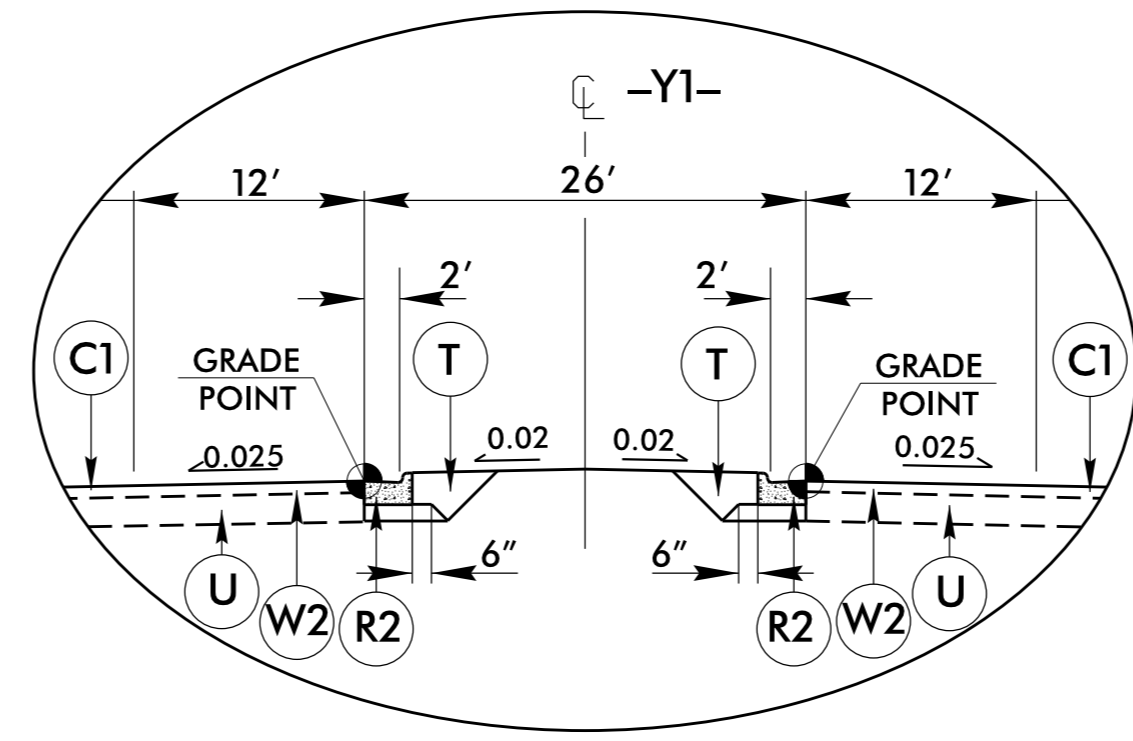
TYPICAL SECTION NO. 4

USE TYPICAL SECTION NO. 4
 -Y1- STA. 12+80.62 TO -Y1- STA. 17+93.05
 -Y1- STA. 18+80.63 TO -Y1- STA. 21+90.00
 NOTE: 16' DIMENSION INCLUDES 4' BICYCLE LANE



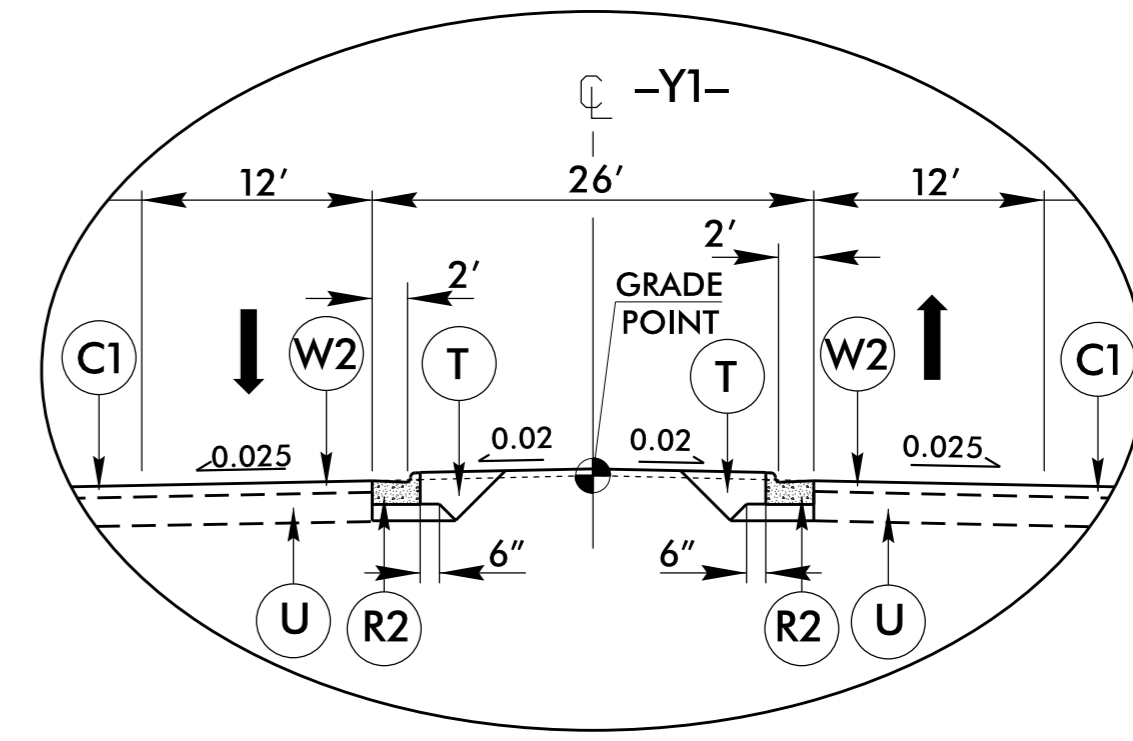
INSET F

USE WITH TYPICAL SECTION NO. 4
 -Y1- STA. 12+80.62 TO -L- STA. 17+50.00 RT.
 *NOTE: TRANSITION FROM 18' BERM TO 13' BERM
 -Y1- STA. 11+27.09 TO -L- STA. 12+80.62 RT.



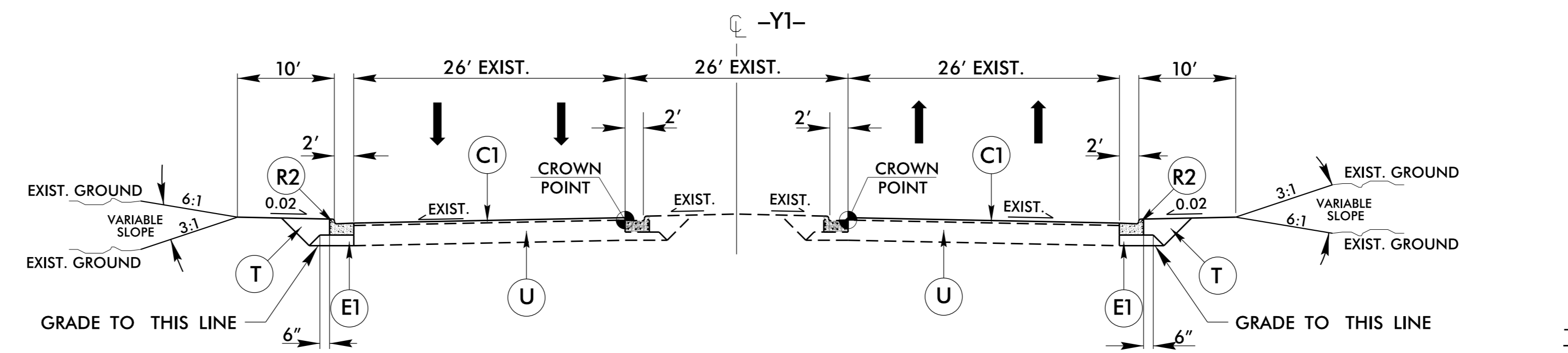
INSET G

USE WITH TYPICAL SECTION NO. 4
 -Y1- STA. 12+80.62 TO STA. 14+23.82
 NOTE: TRANSITION FROM INSET G TO INSET H
 -Y1- STA. 12+80.62 TO STA. 14+04.35



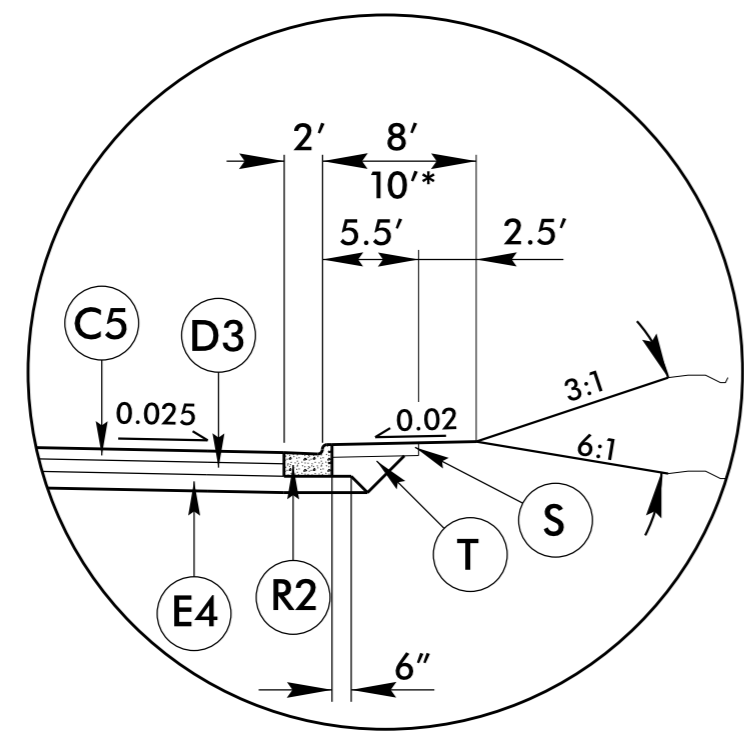
INSET H

USE WITH TYPICAL SECTION NO. 4
 -Y1- STA. 12+80.62 TO STA. 14+23.82



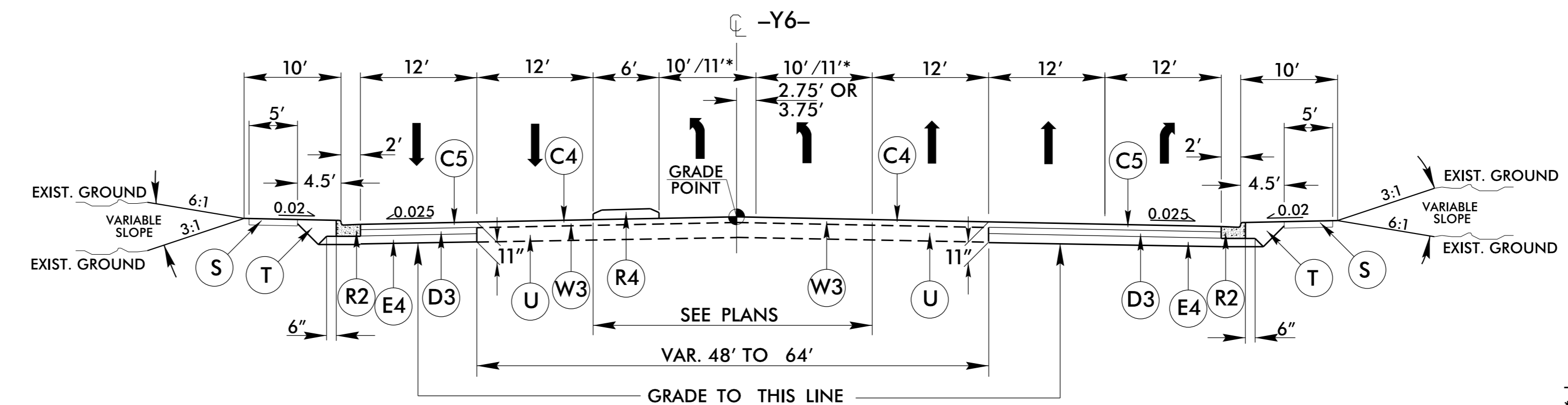
TYPICAL SECTION NO. 5

USE TYPICAL SECTION NO. 5
 -Y1- STA. 11+27.09 RT. TO -Y1- STA. 12+80.62 RT.
 -Y1- STA. 21+90.00 LT. TO -Y1- STA. 29+02.33 LT.
 -Y1- STA. 21+90.00 RT. TO -Y1- STA. 29+27.40 RT.



INSET I

USE WITH TYPICAL SECTION NO. 6
 -Y6- STA. 6+91.82 TO -Y6- STA. 8+91.82 RT.
 * -Y6- STA. 9+40.00 TO -Y6- STA. 9+65.00 LT.
 * -Y6- STA. 12+67.06 TO -Y6- STA. 13+63.43 LT.



TYPICAL SECTION NO. 6

USE TYPICAL SECTION NO. 6
 * -Y6- STA. 5+90.00 TO -Y6- STA. 18+50.00
 -Y6- STA. 20+00.00 TO -Y6- STA. 34+70.00

6/2/99

27-JAN-2015 12:21 \\s3338b_r.dj.tjpd.dgn