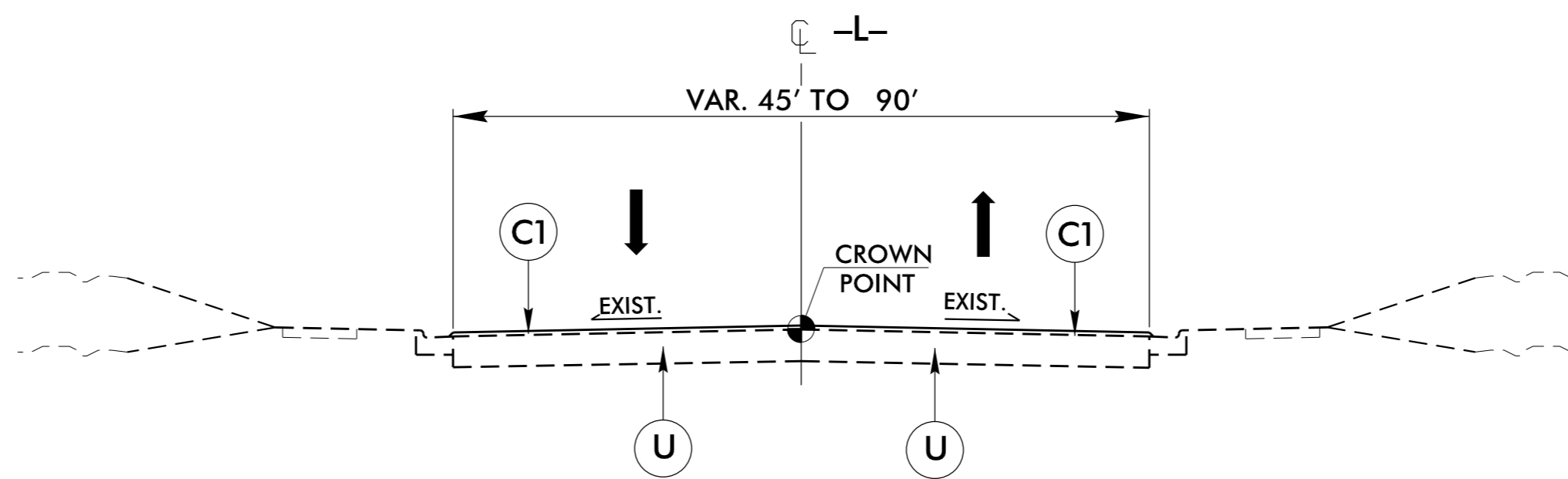


6/2/09

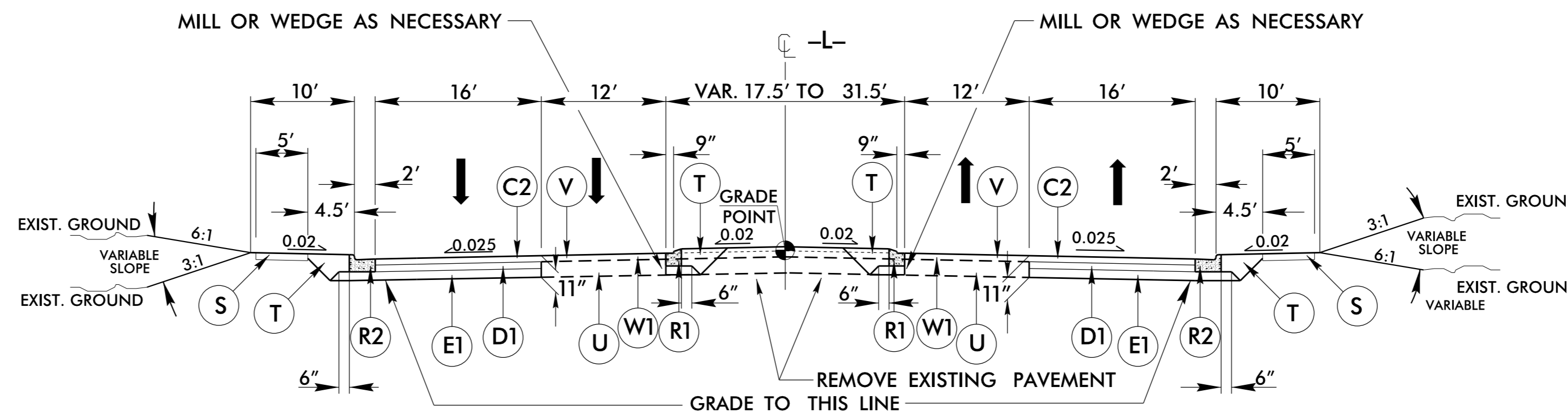
PAVEMENT SCHEDULE (FINAL PAVEMENT DESIGN)	
C1	1 1/2" S9.5B
C2	3" S9.5B
C3	VAR. S9.5B
C4	1 1/2" S9.5C
C5	3" S9.5C
C6	VAR. S9.5C
C7	2" SF9.5A
D1	4" I19.0B
D2	VAR. I19.0B
D3	4" I19.0C
D4	VAR. I19.0C
E1	4" B25.0B
E2	5" B25.0B
E3	VAR. B25.0B
E4	4" B25.0C
E5	VAR. B25.0C
J	6" ABC
N	GEOTEXTILE FOR SOIL STAB.
R1	1' 6" C & G
R2	2'-6" C & G
R3	EXPRESSWAY C & G
R4	5" MONO. ISLAND (KEYED IN)
S	4" SIDEWALK
T	EARTH MATERIAL
U	EXIST. PAVEMENT
V	1 1/2" MILLING
W1	WEDGING DETAIL NO. 1
W2	WEDGING DETAIL NO. 2
W3	WEDGING DETAIL NO. 3
W4	WEDGING DETAIL NO. 4

NOTE: PAVEMENT EDGE SLOPES ARE 1:1 UNLESS SHOWN OTHERWISE.



TYPICAL SECTION NO. 1

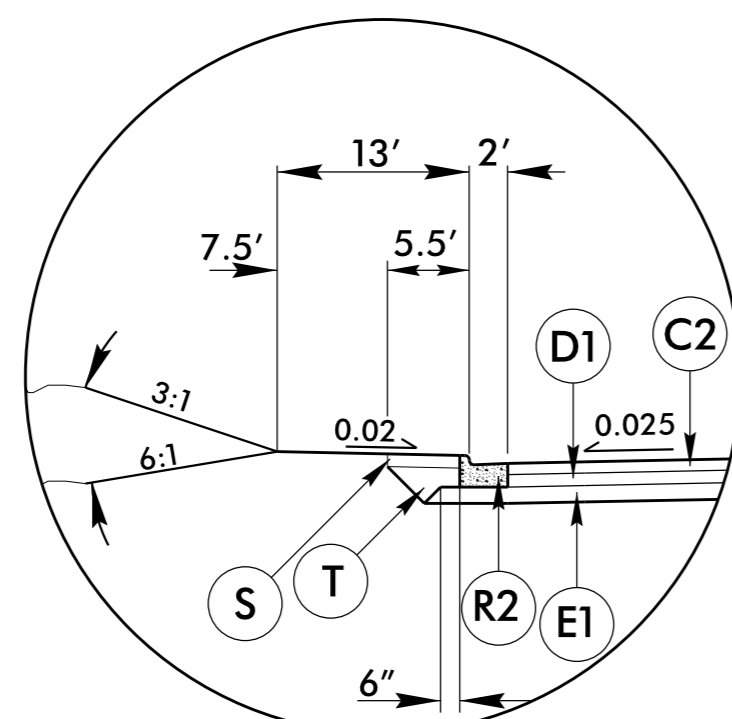
USE TYPICAL SECTION NO. 1
 -L- STA. 10+10.00 TO -L- STA. 11+25.00
 -L- STA. 91+20.00 TO -L- STA. 96+97.55



TYPICAL SECTION NO. 2

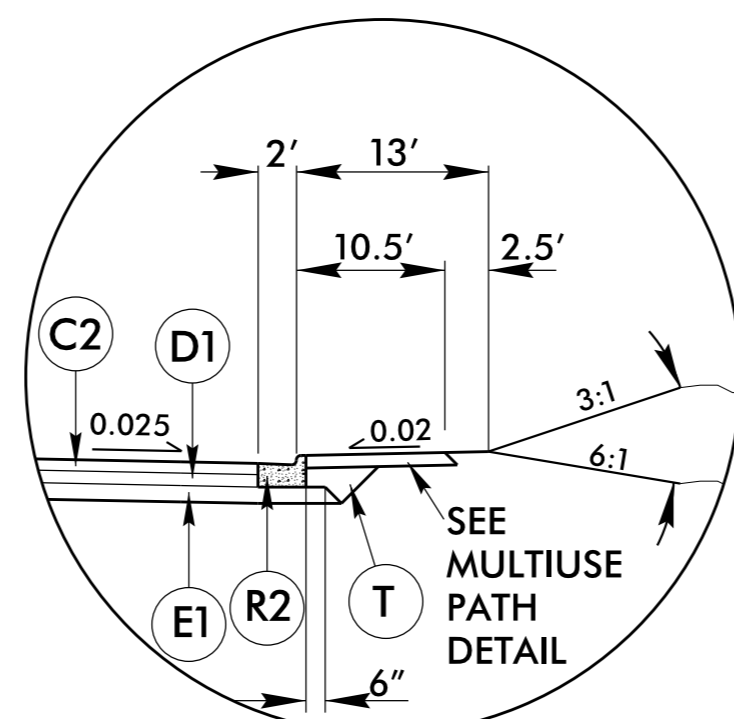
NOTE 1: 16' DIMENSION INCLUDES 4' BICYCLE LANE
 NOTE 2: MILL EXISTING PAVEMENT FROM -L- STA. 11+25.00 TO -L- STA. 80+00.00

USE TYPICAL SECTION NO. 2
 -L- STA. 11+25.00 TO -L- STA. 13+50.00
 -L- STA. 18+50.00 TO -L- STA. 50+00.00
 -L- STA. 53+00.00 TO -L- STA. 56+10.94
 -L- STA. 57+11.99 TO -L- STA. 61+50.00
 -L- STA. 64+50.00 TO -L- STA. 91+20.00



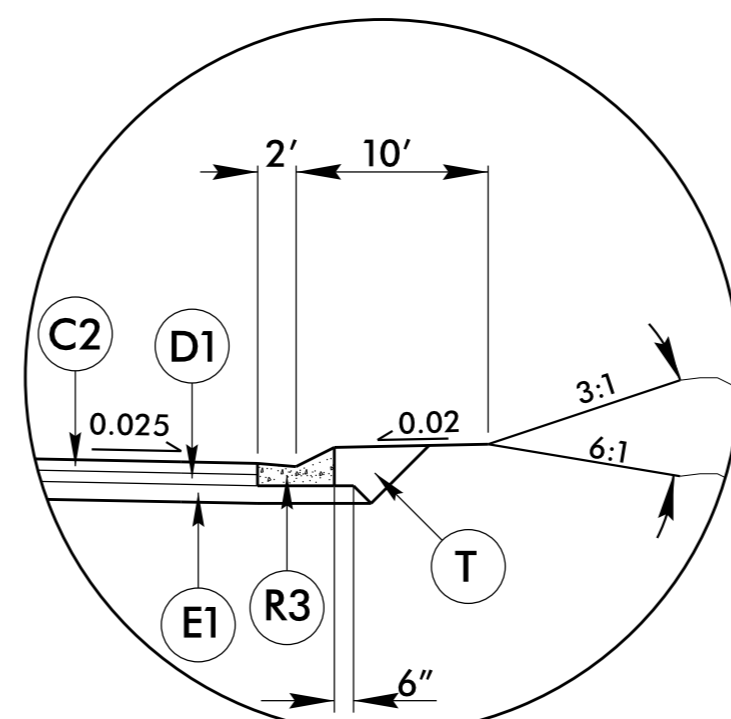
INSET A

USE WITH TYPICAL SECTION NO. 2 & NO. 3
 -L- STA. 11+50.00 TO -L- STA. 16+50.00 LT.



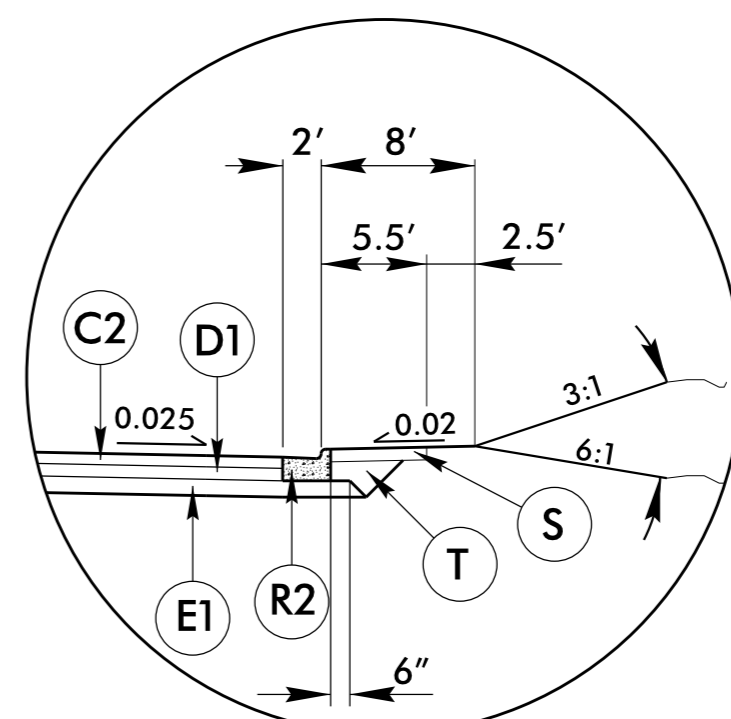
INSET B

USE WITH TYPICAL SECTION NO. 2 & NO. 3
 -L- STA. 11+50.00 TO -L- STA. 16+50.00 RT.



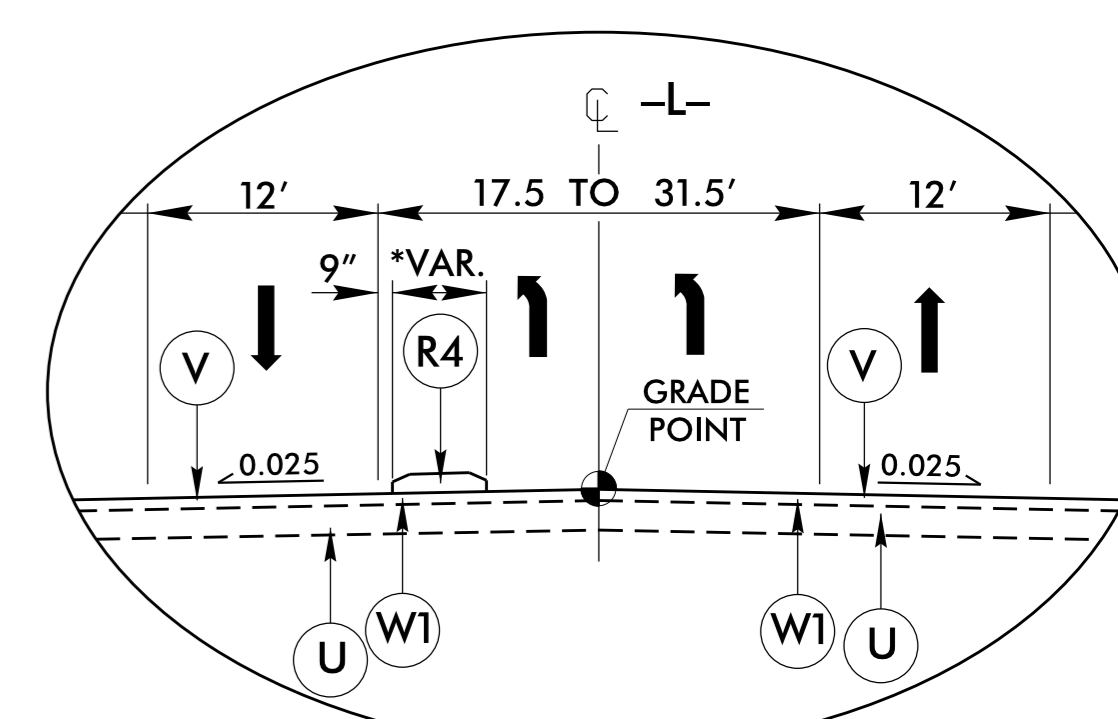
INSET C

USE WITH TYPICAL SECTION NO. 2
 -L- STA. 86+75.00 TO -L- STA. 87+35.00 RT.
 -L- STA. 88+90.00 TO -L- STA. 89+50.00 RT.
 -L- STA. 90+00.00 TO -L- STA. 90+60.00 LT.



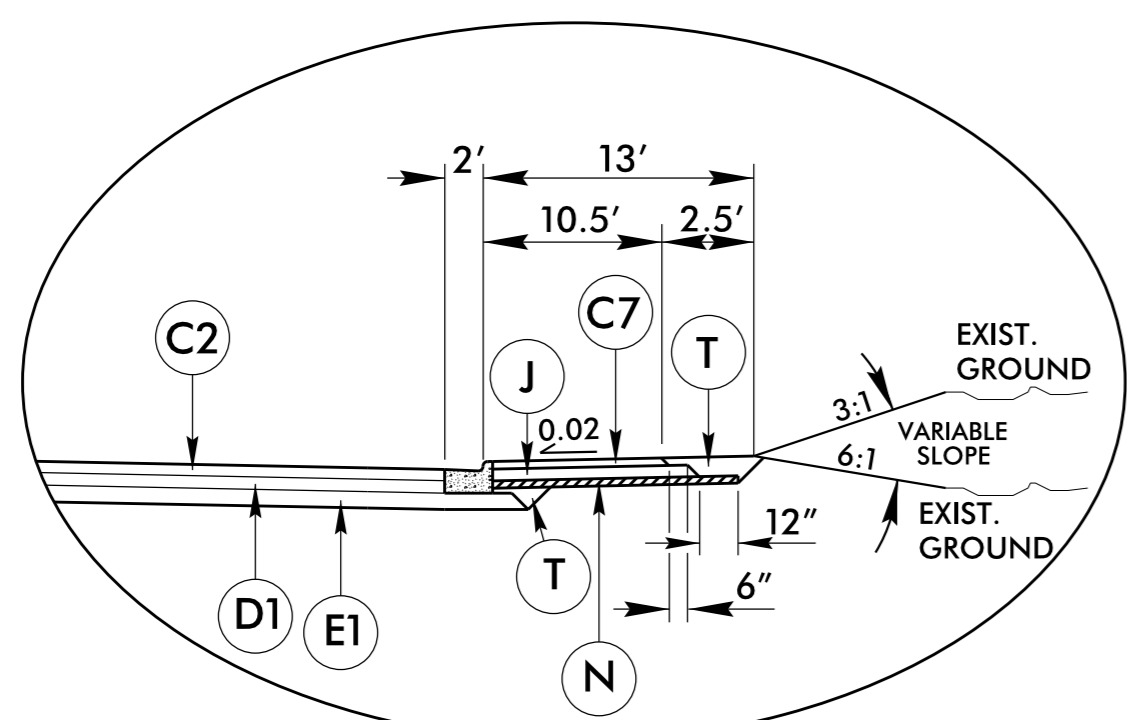
INSET D

USE WITH TYPICAL SECTION NO. 2
 -L- STA. 83+22.55 TO -L- STA. 83+88.97 RT.



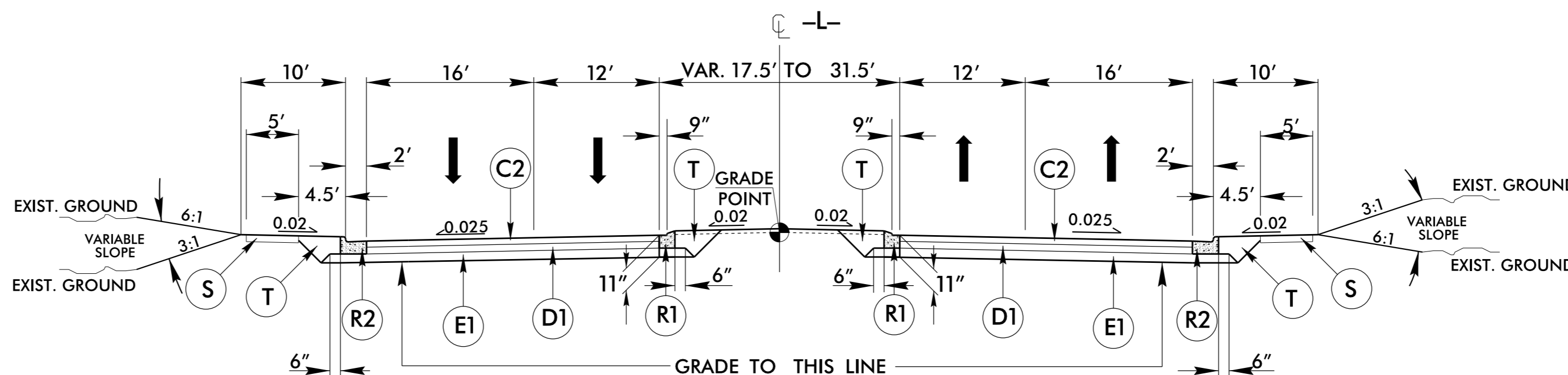
INSET E

USE WITH TYPICAL SECTION NO. 2 & NO. 3
 *SEE PLANS FOR WIDTH AND LOCATION
 -L- STA. 13+42.00 TO -L- STA. 16+74.92
 -L- STA. 17+71.35 TO -L- STA. 23+90.71
 -L- STA. 29+89.67 TO -L- STA. 30+70.28
 -L- STA. 31+46.45 TO -L- STA. 32+27.11
 -L- STA. 37+95.17 TO -L- STA. 44+41.97
 -L- STA. 45+18.10 TO -L- STA. 55+84.36
 -L- STA. 57+41.62 TO -L- STA. 66+46.00
 -L- STA. 67+55.54 TO -L- STA. 71+27.92
 -L- STA. 83+43.90 TO -L- STA. 84+24.55
 -L- STA. 85+09.17 TO -L- STA. 96+70.87



DETAIL OF MULTIUSE PATH

USE WITH TYPICAL SECTION NO. 15 (MIRROR) & INSET B & F



TYPICAL SECTION NO. 3

USE TYPICAL SECTION NO. 3
 -L- STA. 13+50.00 TO -L- STA. 18+50.00
 -L- STA. 50+00.00 TO -L- STA. 53+00.00
 -L- STA. 61+50.00 TO -L- STA. 64+50.00

NOTE: 16' DIMENSION INCLUDES 4' BICYCLE LANE

27-JAN-2015 12:21 \\s3338b_r\dj_tjpb.dgn

PROJECT REFERENCE NO. U-3338B	SHEET NO. 2A-2
ROADWAY DESIGN ENGINEER TATIA L. WHITE SEAL 024641 2/16/2015	PAVEMENT DESIGN ENGINEER ANDREW G. MITCHELL SEAL 031484 2/16/2015