

**This electronic collection of documents is provided
for the convenience of the user
and is Not a Certified Document –**

**The documents contained herein were originally issued
and sealed by the individuals whose names and license
numbers appear on each page, on the dates appearing
with their signature on that page.**

**This file or an individual page
shall not be considered a certified document.**

09/08/99

TIP PROJECT: I-3318BB

See Sheet 1A For Index of Sheets
See Sheet 1B For Conventional Symbols
See Sheet 1C-1 through 1C-2 For Survey Control Sheets

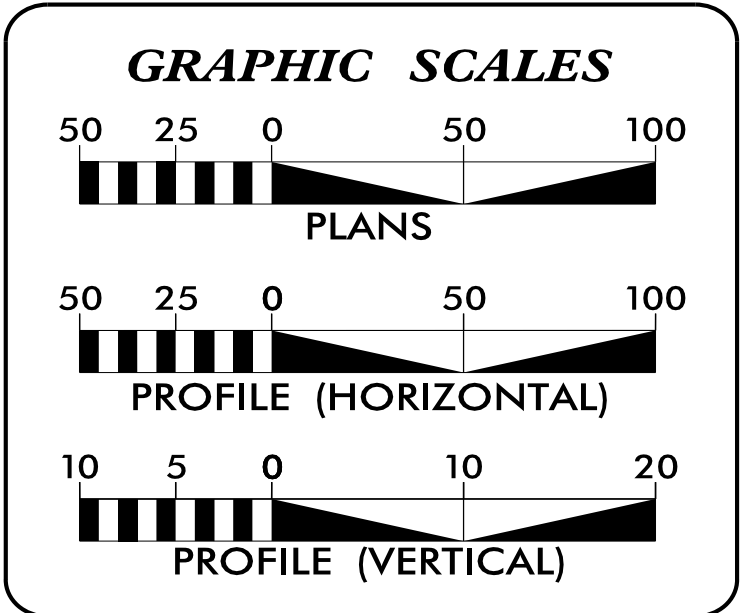
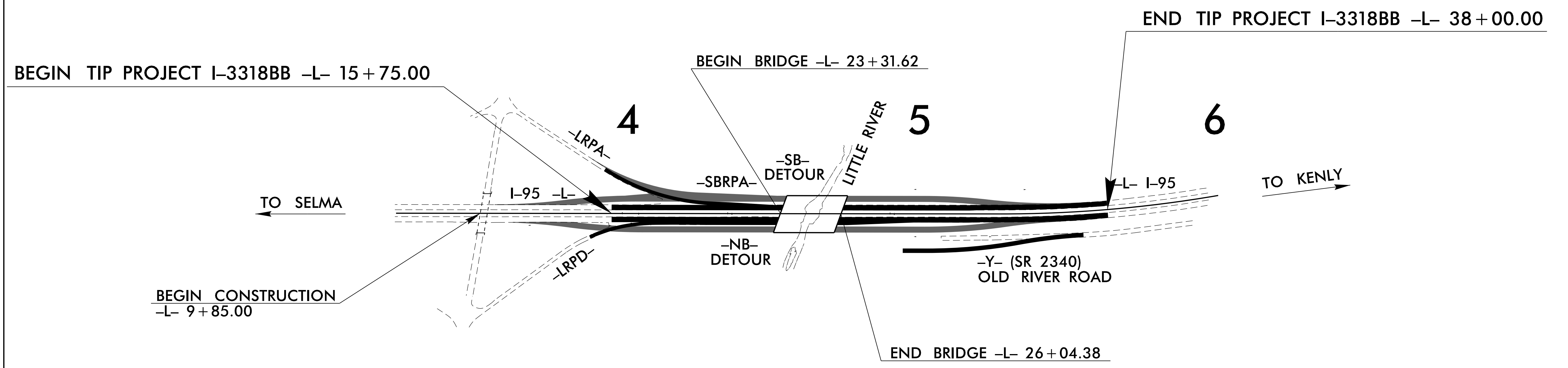
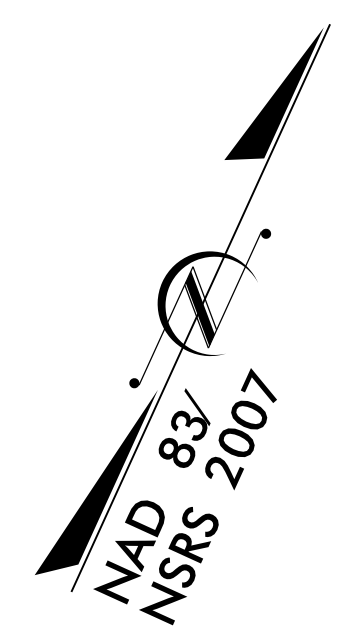
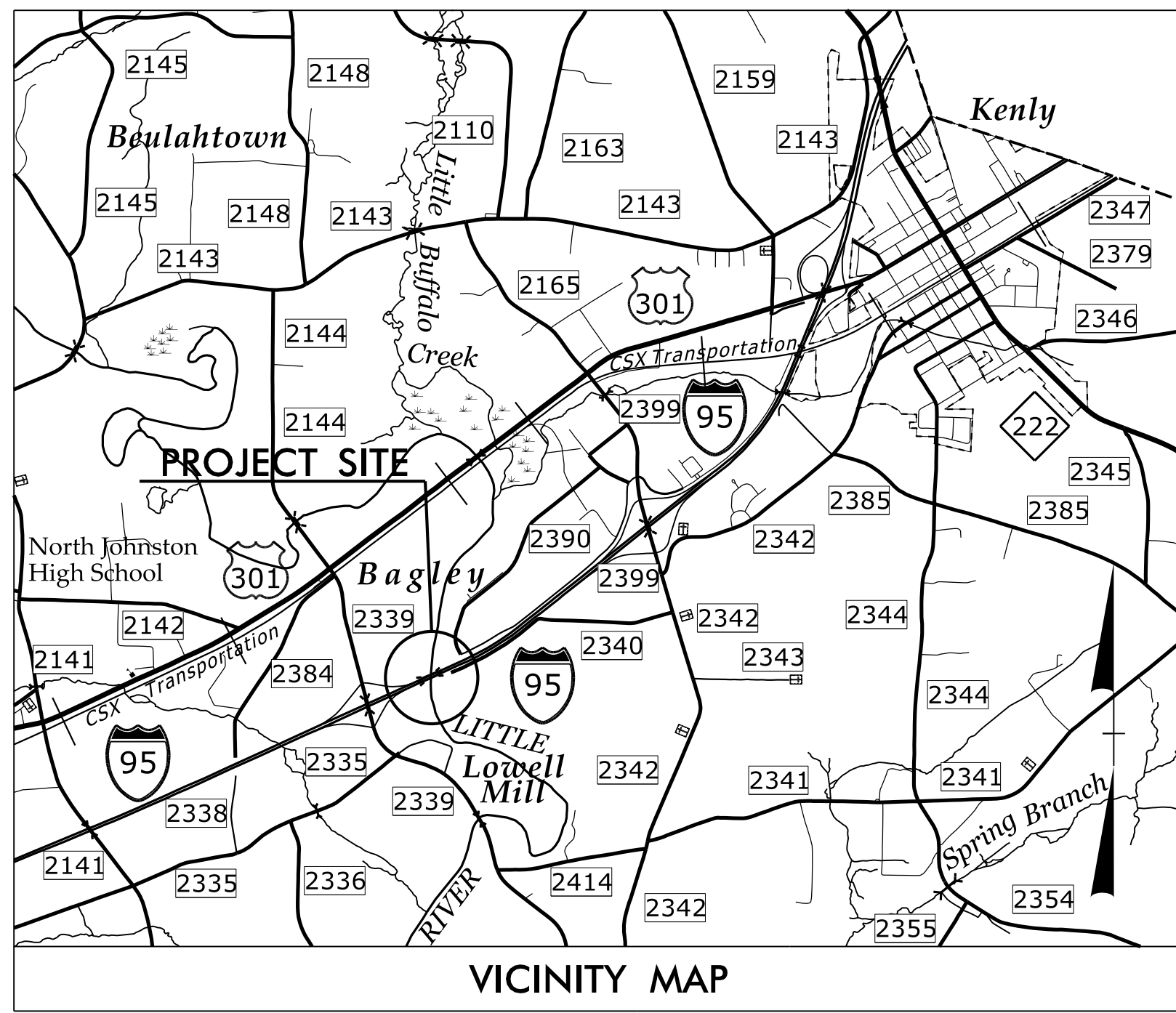
T.I.P. NO.	SHEET NO.
I-3318BB	UO-1

STATE OF NORTH CAROLINA DIVISION OF HIGHWAYS

UTILITIES BY OTHERS PLANS JOHNSTON COUNTY

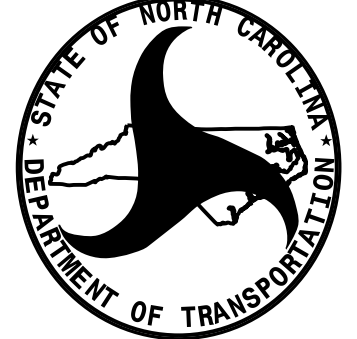
LOCATION: BRIDGES 114 & 116 OVER THE LITTLE RIVER I-95

TYPE OF WORK: RELOCATE POWER LINES



INDEX OF SHEETS	
SHEET NO.	DESCRIPTION
UO-1	TITLE SHEET
UO-2 THRU UO-4	UTILITIES BY OTHERS PLAN SHEETS

UTILITY OWNERS ON PROJECT
(A) DUKE ENERGY PROGRESS



PREPARED IN THE OFFICE OF:
**DIVISION OF HIGHWAYS
UTILITIES UNIT
UTILITIES ENGINEERING**

1555 MAIL SERVICES CENTER
RALEIGH, NC 27699-1555
PHONE (919) 707-6690
FAX (919) 250-4151

Roger Worthington, P.E. UTILITIES SECTION ENGINEER
Bo Hemphill, P.E. UTILITIES SQUAD LEADER PROJECT ENGINEER
Kelvin Martin UTILITIES PROJECT DESIGNER

23-JUL-2015 17:44
R:\Utilities\Engineering\UB0\Proj\I3318BB-Ut-fsh-U01-psd.dgn
\$\$\$\$\$USERNAME\$\$\$\$\$

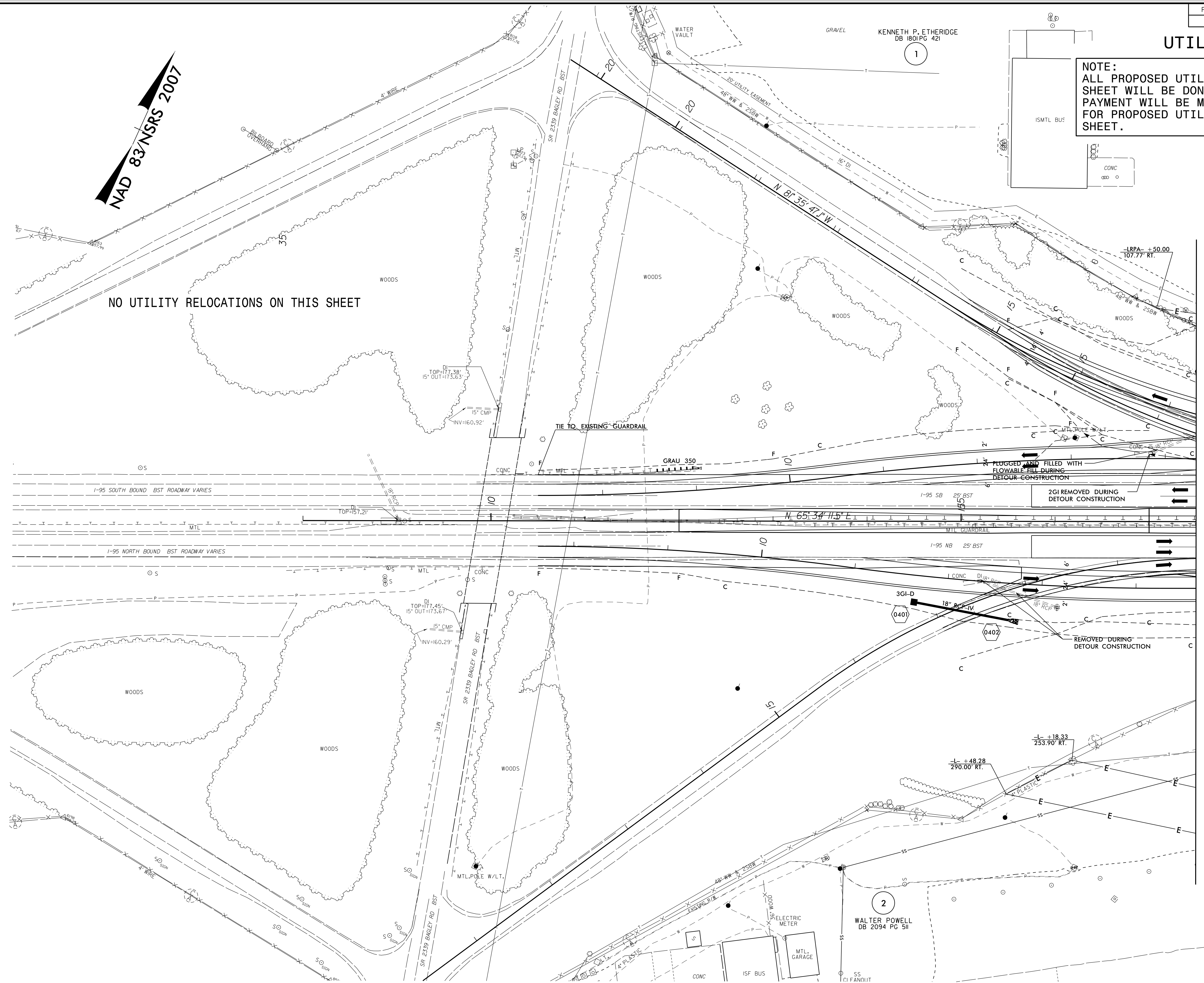
UTILITIES BY OTHERS

NOTE:
ALL PROPOSED UTILITY WORK SHOWN ON THIS SHEET WILL BE DONE BY OTHERS. NO PAYMENT WILL BE MADE TO THE CONTRACTOR FOR PROPOSED UTILITY WORK SHOWN ON THIS SHEET.

NAD 83/NSRS 2007

NO UTILITY RELOCATIONS ON THIS SHEET

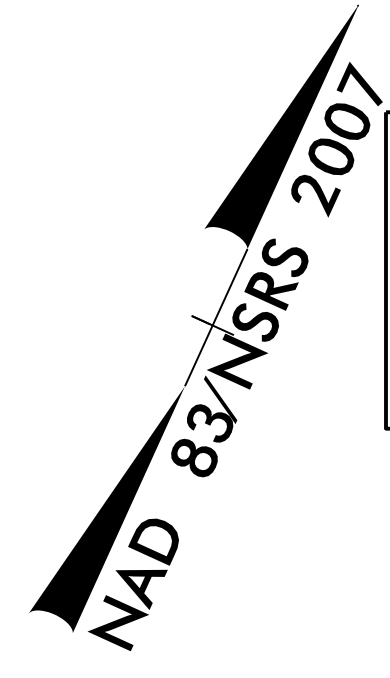
MATCHLINE -L- STA. 17 + 50.00 SEE SHEET UO-3



5/14/99
23-JUL-2015 11:46 AM
I:\Projects\I-3318BB-UO-2\psh.dgn

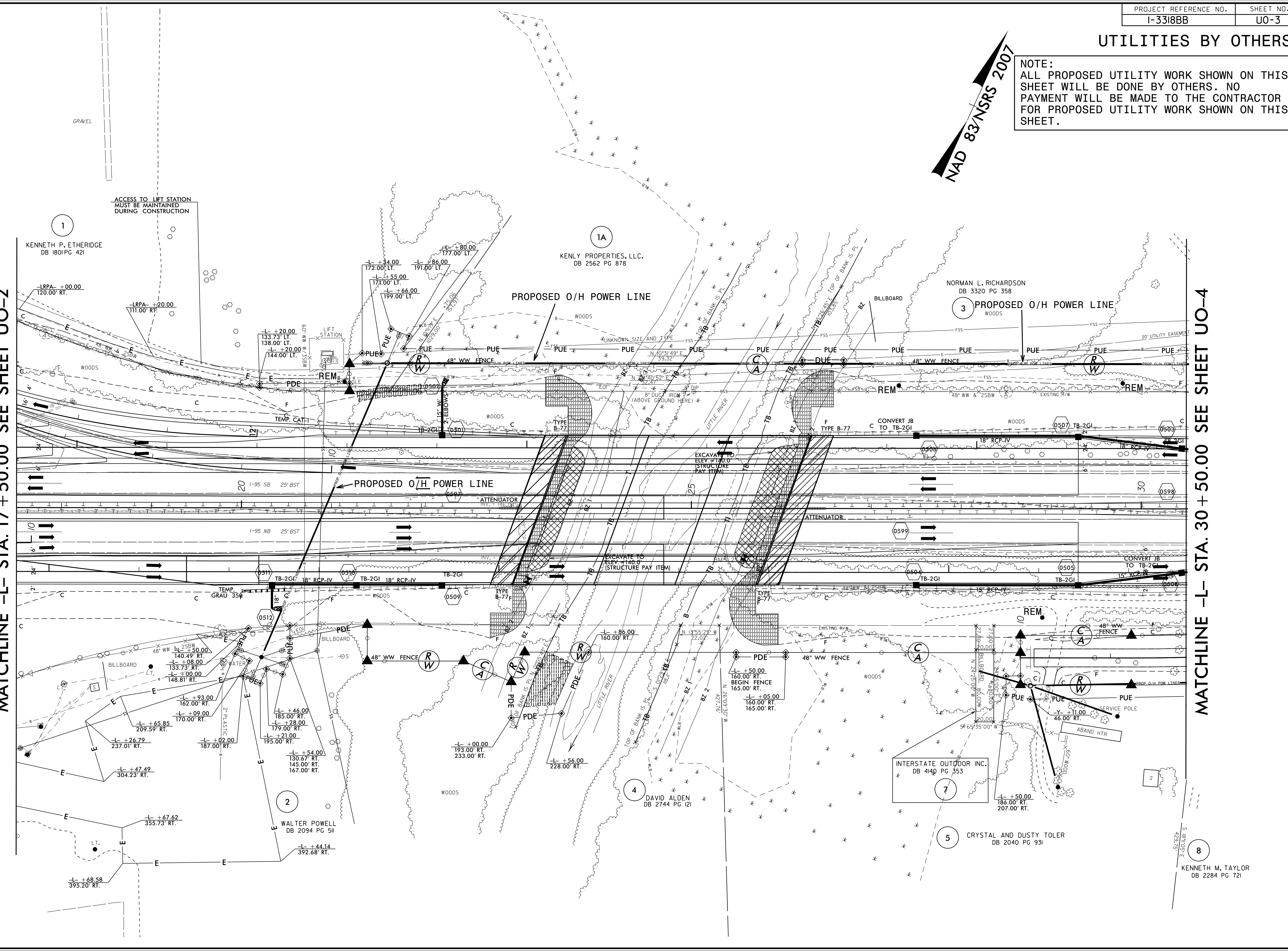
UTILITIES BY OTHERS

NOTE: ALL PROPOSED UTILITY WORK SHOWN ON THIS SHEET WILL BE DONE BY OTHERS. NO PAYMENT WILL BE MADE TO THE CONTRACTOR FOR PROPOSED UTILITY WORK SHOWN ON THIS SHEET.



MATCHLINE -L- STA. 17 + 50.00 SEE SHEET UO-2

MATCHLINE -L- STA. 30 + 50.00 SEE SHEET UO-4



5/14/99
I:\projects\I-3318BB-UO-3\rdy5_U03_psh.dgn
23-JUL-2015 17:51:15
I:\projects\I-3318BB-UO-3\rdy5_U03_psh.dgn

1 KENNETH P. ETHERIDGE DB 1801 PG 421

1A KENLY PROPERTIES, LLC. DB 2562 PG 878

3 NORMAN L. RICHARDSON DB 3320 PG 358

2 WALTER POWELL DB 2094 PG 511

4 DAVID ALDEN DB 2744 PG 121

7 INTERSTATE OUTDOOR INC. DB 4140 PG 353

5 CRYSTAL AND DUSTY TOLER DB 2040 PG 931

8 KENNETH M. TAYLOR DB 2284 PG 721

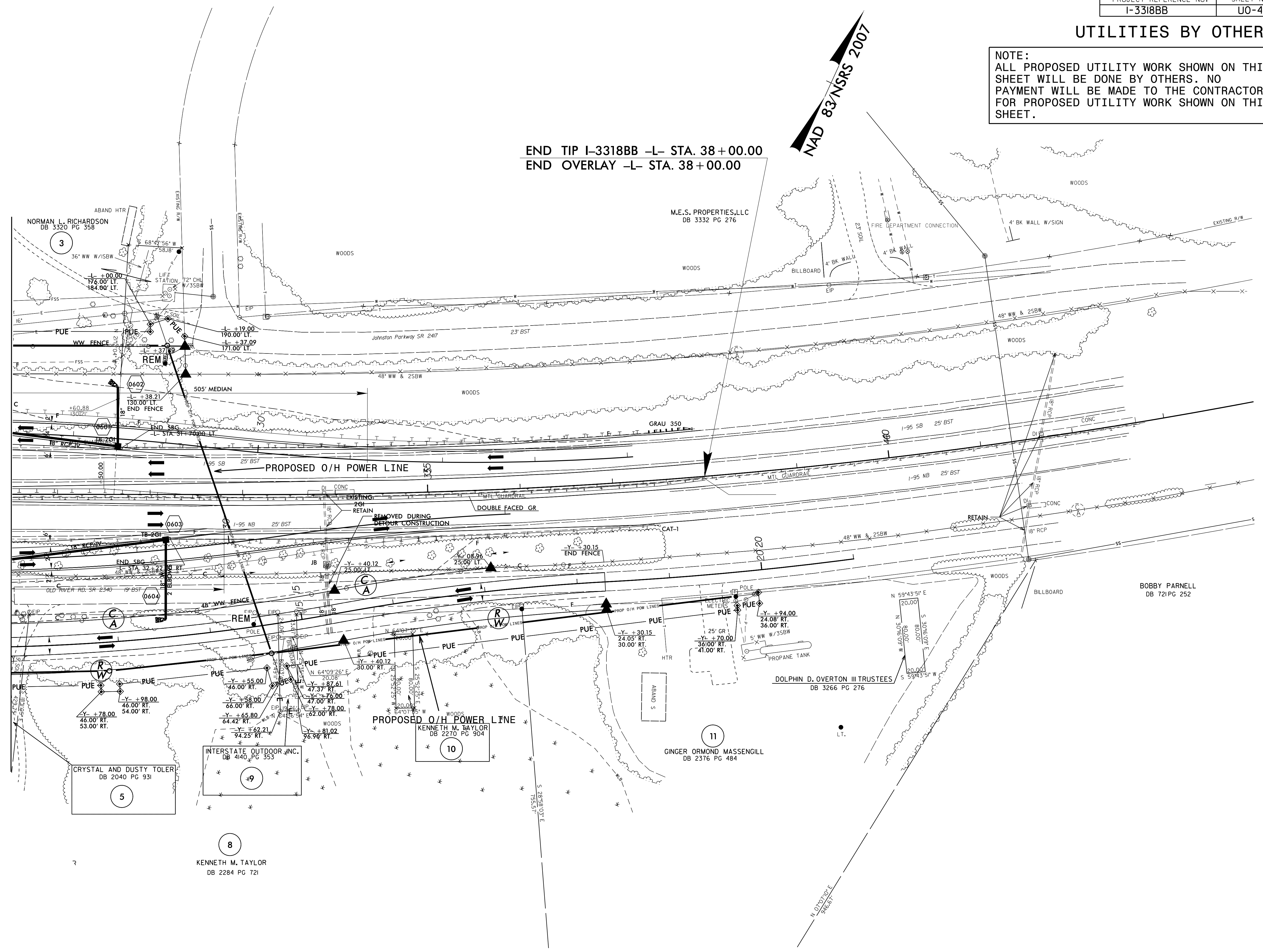
UTILITIES BY OTHERS

NOTE:
 ALL PROPOSED UTILITY WORK SHOWN ON THIS SHEET WILL BE DONE BY OTHERS. NO PAYMENT WILL BE MADE TO THE CONTRACTOR FOR PROPOSED UTILITY WORK SHOWN ON THIS SHEET.

NAD 83/NSRS 2007

END TIP I-3318BB -L- STA. 38+00.00
END OVERLAY -L- STA. 38+00.00

MATCHLINE -L- STA. 30+50.00 SEE SHEET U0-3



5/14/99

23-JUL-2015 11:53 AM
 P:\proj\13318BB_U0-4_psh.dgn
 13318BB_U0-4.dwg