

**This electronic collection of documents is provided
for the convenience of the user
and is Not a Certified Document –**

**The documents contained herein were originally issued
and sealed by the individuals whose names and license
numbers appear on each page, on the dates appearing
with their signature on that page.**

**This file or an individual page
shall not be considered a certified document.**

T.I.P.: I-3318BB

CONTRACT: C203658

**STATE OF NORTH CAROLINA
DEPARTMENT OF TRANSPORTATION**

**SIGNING PLAN
JOHNSTON COUNTY**

LOCATION: REPLACE BRIDGES 114 & 116 OVER THE LITTLE RIVER ON I-95

PROJECT REFERENCE NO. I-3318BB	SHEET NO. SIGN-1
APPROVED: Ayman Alqudwah <small>F32AC5CAF968472</small>	
DATE: 7/15/2015	
SEAL 	

ROADWAY STANDARD DRAWING

THE FOLLOWING ROADWAY STANDARDS AS APPEAR IN "ROADWAY STANDARD DRAWINGS" - PROJECT SERVICES UNIT - N.C. DEPARTMENT OF TRANSPORTATION - RALEIGH, N.C., DATED JANUARY 2012 ARE APPLICABLE TO THIS PROJECT AND BY REFERENCE HEREBY ARE CONSIDERED A PART OF THESE PLANS:

STD. NO.	TITLE
901.10	TYPE 'A' SIGNS
901.20	TYPE 'B' SIGNS
901.50	ARROWS AND SHIELDS
901.70	SIGN STRINGERS AND SUPPORT SPACING
901.80	SIGN MOUNTING DETAILS - FOR TYPE A AND TYPE B SIGNS
903.10	GROUND MOUNTED SIGN SUPPORTS (SHEET 3 OF 3)
904.10	ORIENTATION OF GROUND MOUNTED SIGNS
904.20	SECONDARY SIGN MOUNTING
904.30	SUPPLEMENTAL SIGN MOUNTING
904.50	MOUNTING OF TYPE 'D', 'E' AND 'F' SIGNS ON 'U' CHANNEL POSTS

GENERAL NOTES

- . SIGNS FURNISHED BY STATE
- . ALL TYPE 'D' SIGNS SHALL BE MOUNTED ON TWO U-CHANNEL POSTS UNLESS OTHERWISE INDICATED ON THE PLANS.
- . IF REMOVAL OR RELOCATION OF SIGNS ON PRIVATE STREET (NON-STATE MAINTAINED) IS REQUIRED DUE TO CONSTRUCTION, THE CONTRACTOR SHALL INFORM THE ENGINEER. THE WORK WILL BE COMPLETED BY OTHERS.
- . WHEN NOT STATIONED OR DIMENSIONED ON PLANS, ALL 'E' AND 'F' SIGNS SHALL BE FIELD LOCATED BY THE ENGINEER
- . ALL EXISTING SIGNS ON "U" CHANNEL POST WITHIN THE PROJECT LIMITS SHALL BE REMOVED AND DISPOSED OF UNLESS OTHERWISE NOTED ON PLANS.
- . WHEN EXISTING SIGNS ARE REMOVED AND INSTALLED ON NEW SUPPORTS, THE RE-ERECTION SHALL IMMEDIATELY FOLLOW THE REMOVAL.
- . THE BACKGROUND FOR TYPE E & F SIGNS SHALL BE TYPE C REFLECTIVE SHEETING.
- . DO NOT BEGIN FABRICATION FOR TYPES A & B SIGNS MOUNTED ON OVERHEAD STRUCTURES OR STEEL SUPPORTS UNTIL "S" DIMENSIONS HAVE BEEN FIELD VERIFIED.
- . SEE ROADWAY PLANS FOR GUARD/GUIDE RAIL DETAILS.

SUMMARY OF QUANTITIES

ITEM NO.		ITEM DESCRIPTION	QUANTITY	UNIT
DESC. NO.	SECT. NO.			
4048000000	902	REINFORCED CONCRETE SIGN FOUNDATION	7	C.Y.
4054000000	902	PLAIN CONCRETE SIGN FOUNDATION	1	C.Y.
4060000000	903	SUPPORTS, BREAKAWAY STEEL BEAM	1543	LB.
4066000000	903	SUPPORTS, SIMPLE STEEL BEAM	2965	LB.
4072000000	903	SUPPORTS, 3 LB STEEL U-CHANNEL	205	L.F.
4078000000	903	SUPPORTS, 2 LB STEEL U-CHANNEL	2	EA.
4096000000	904	SIGN ERECTION, TYPE D	4	EA.
4102000000	904	SIGN ERECTION, TYPE E	5	EA.
4108000000	904	SIGN ERECTION, TYPE F	1	EA.
4110000000	904	SIGN ERECTION, TYPE A (GROUND MOUNTED)	2	EA.
4110000000	904	SIGN ERECTION, TYPE B (GROUND MOUNTED)	1	EA.
4114000000	904	SIGN ERECTION, MILEMARKERS	2	EA.
4116100000	904	SIGN ERECTION, RELOCATE SIGN TYPE A (GROUND MOUNTED)	3	EA.
4138000000	907	DISPOSAL OF SUPPORT, STEEL BEAM	6	EA.
4152000000	907	DISPOSAL OF SIGN SYSTEM, STEEL BEAM	2	EA.
4155000000	907	DISPOSAL OF SIGN SYSTEM, U-CHANNEL	14	EA.

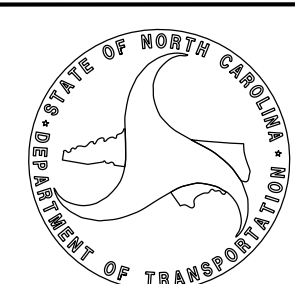
INDEX

SHEET NO.	DESCRIPTION
SIGN-1	TITLE SHEET
SIGN-1A THRU 1C	REVISED SIGNING ROADWAY STANDARD DRAWINGS
SIGN-2	GROUND MOUNTED SIGN SUPPORT CHART
SIGN-3 AND 3A	SIGN DESIGNS
SIGN-3B	SIGN TYPE "E" AND "F" SHEETS
SIGN-4 AND 5	SIGNING PLAN SHEETS

PLAN PREPARED BY: N.C.D.O.T. SIGNING AND DELINEATION UNIT

A. I. ALQUDWAH, P.E. SIGNING & DELINEATION REGIONAL ENGINEER

D. M. EATON SIGNING & DELINEATION PROJECT DESIGN ENGINEER

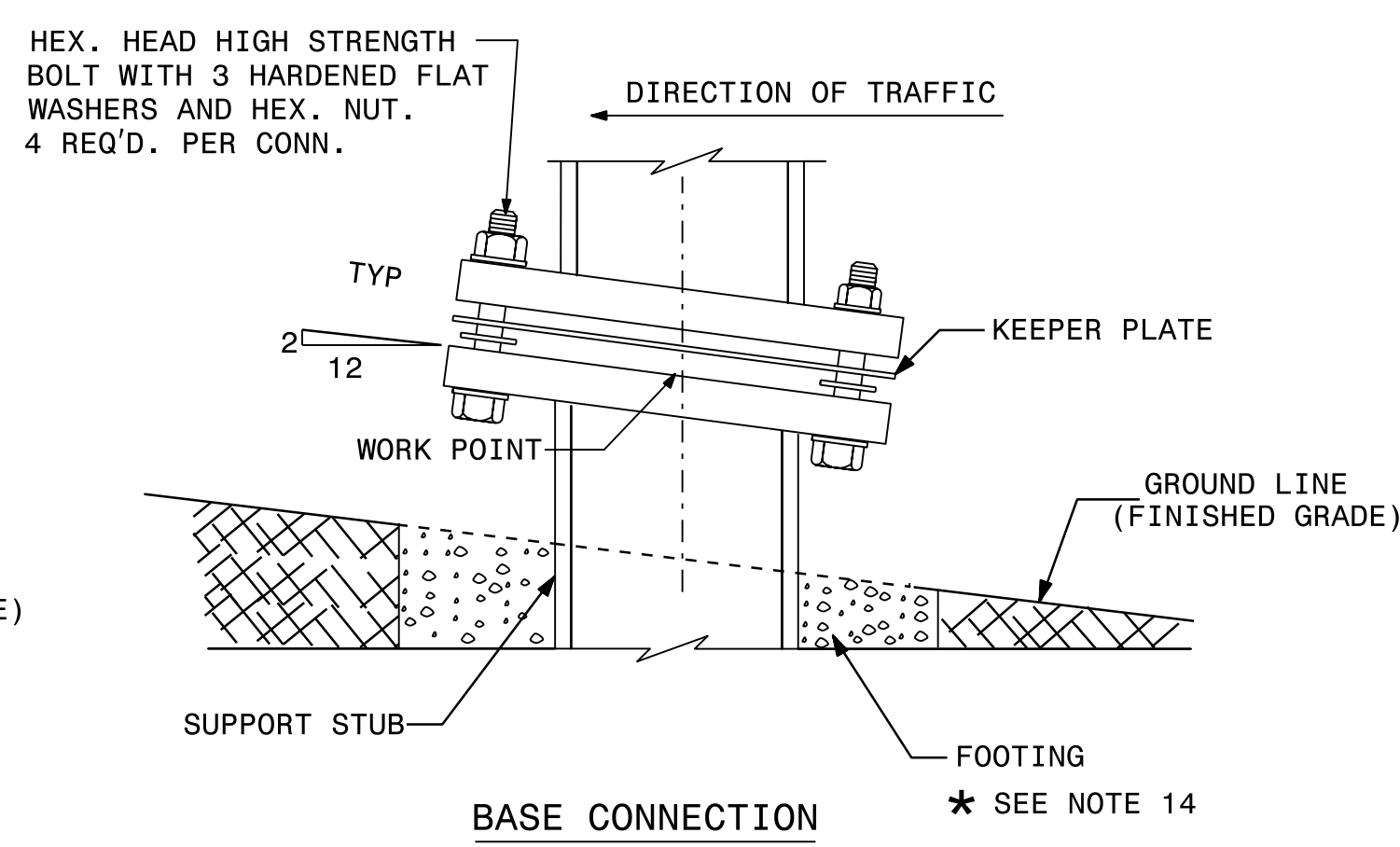
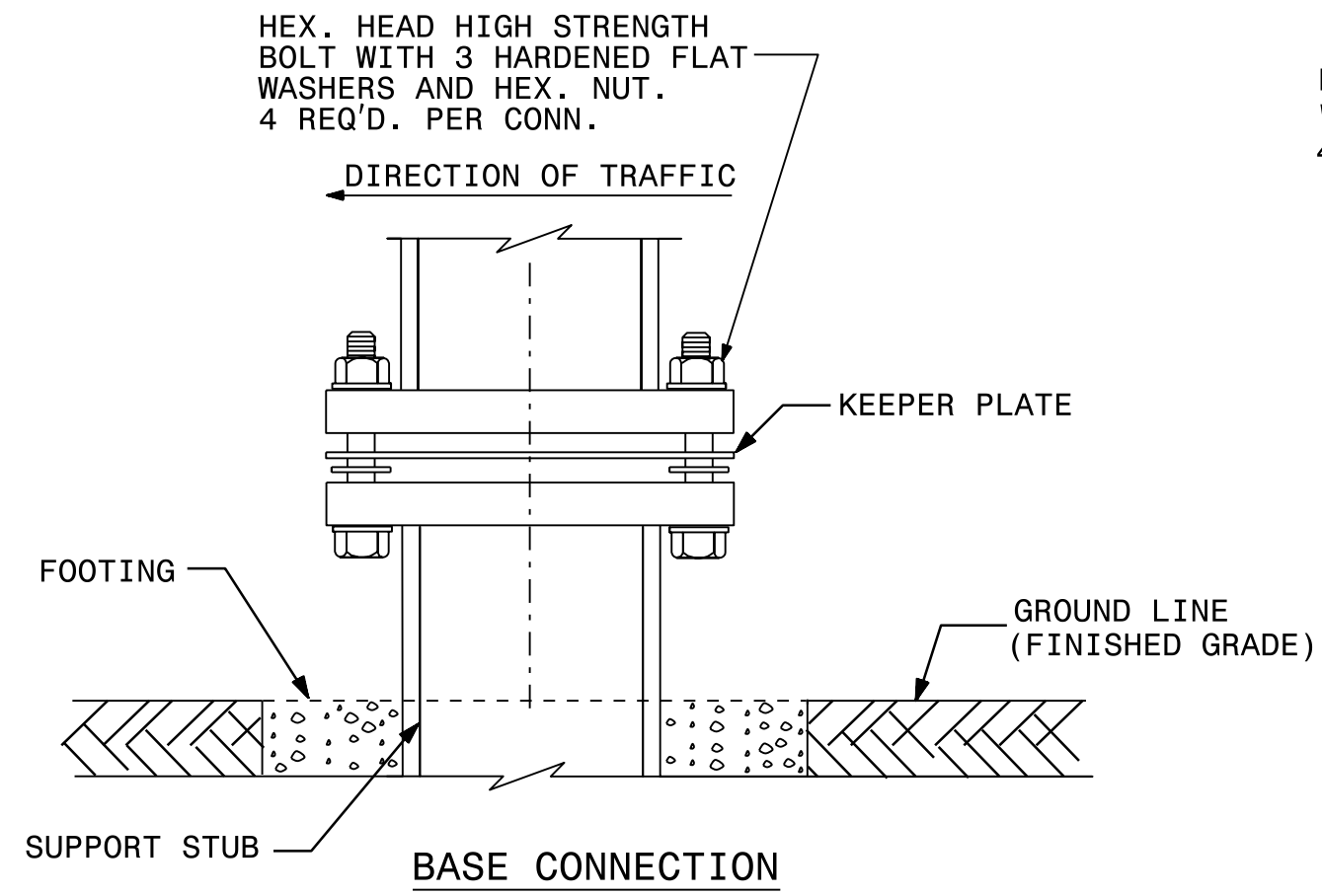
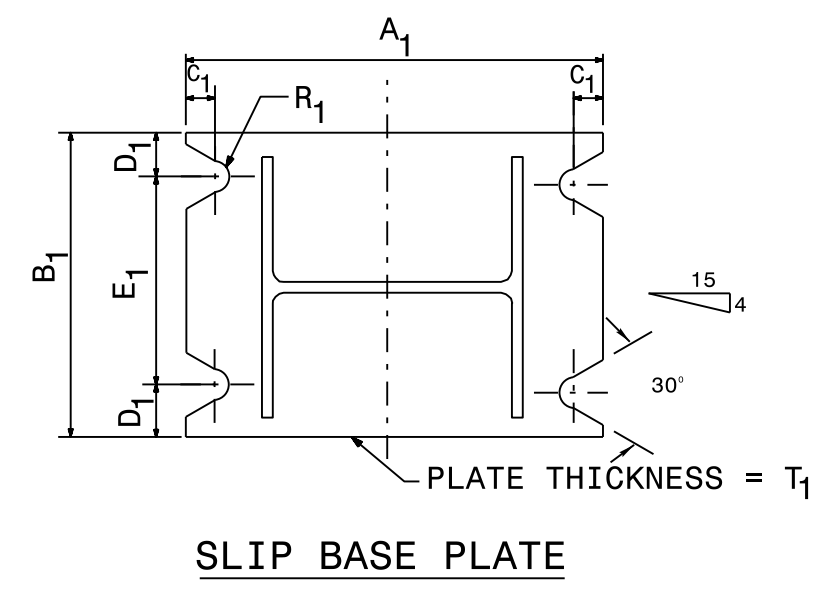
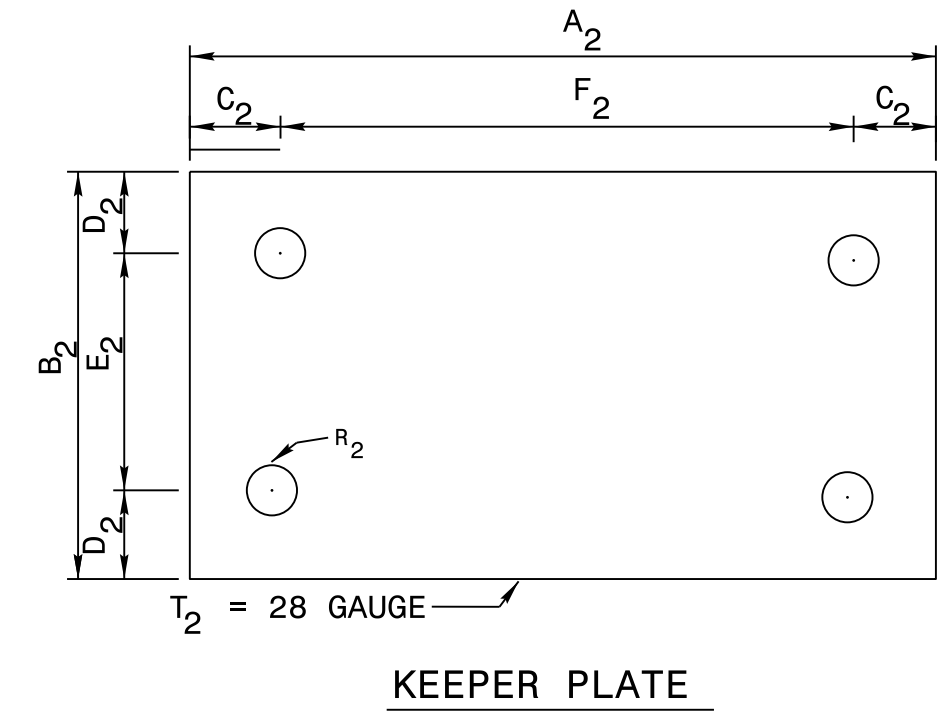
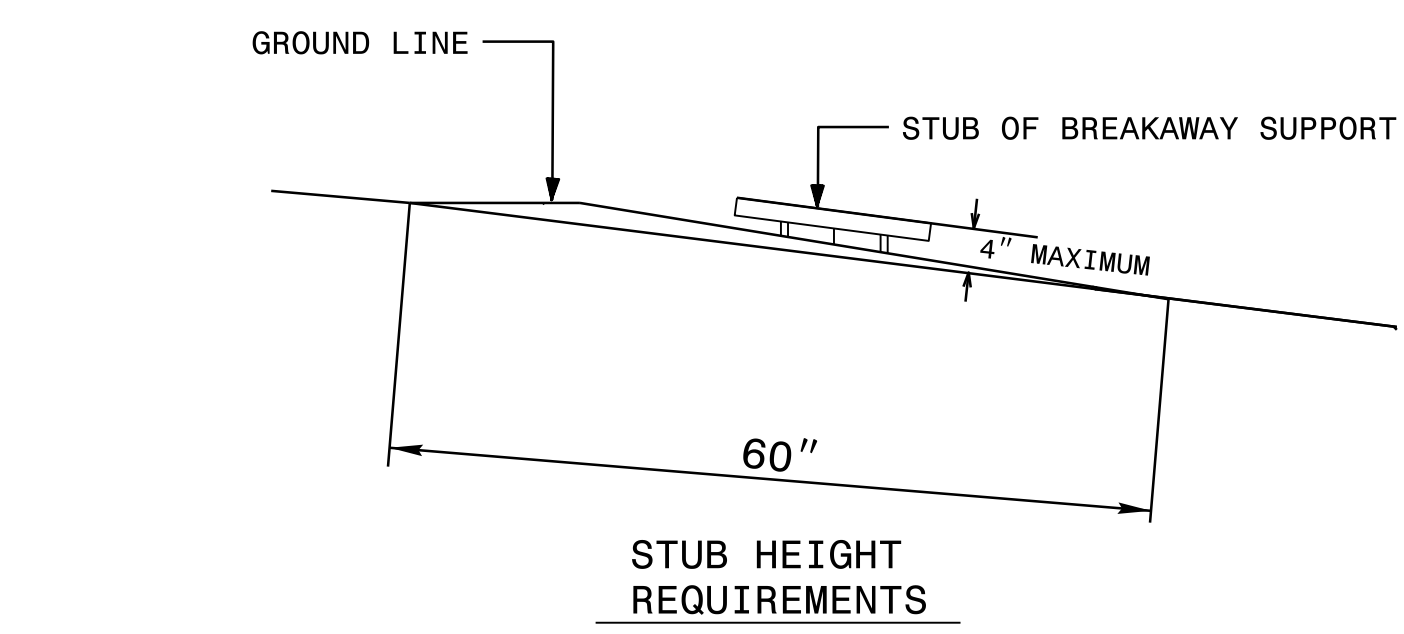
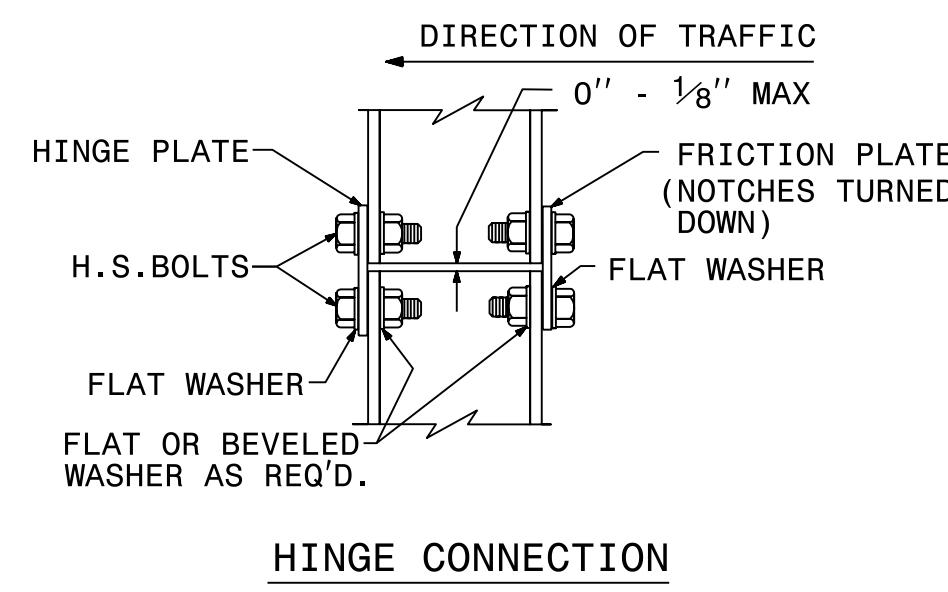
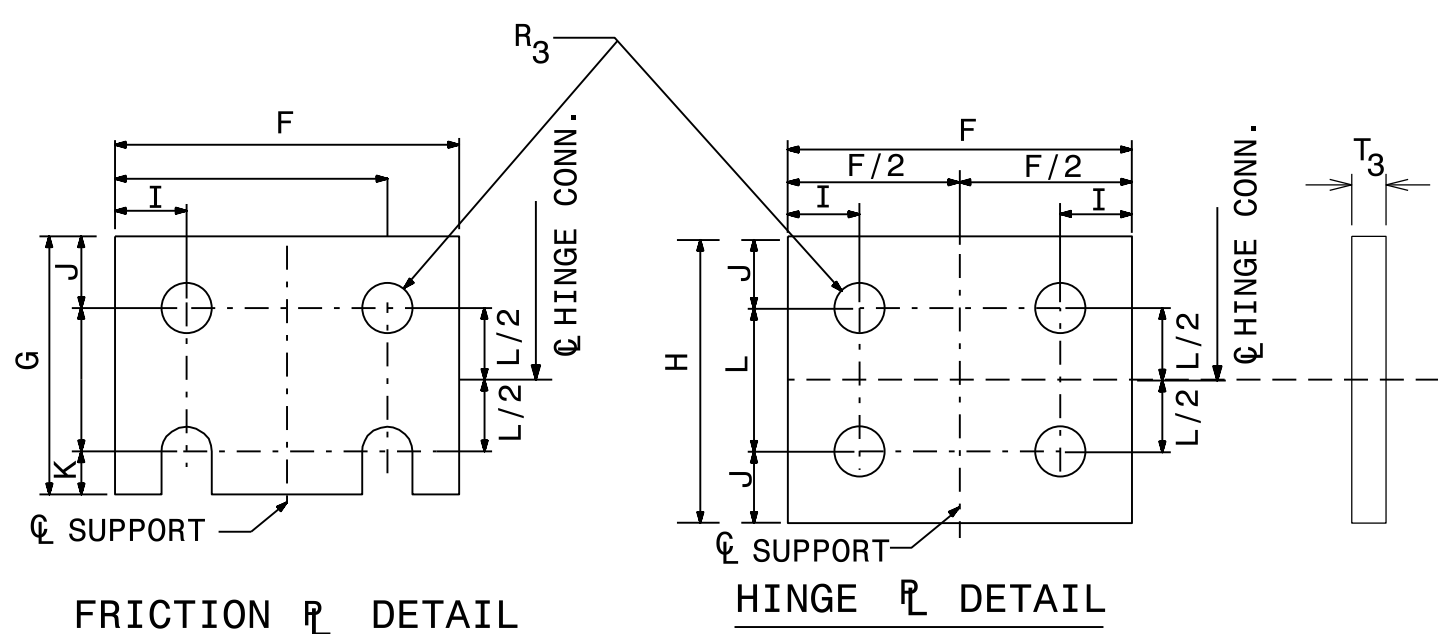
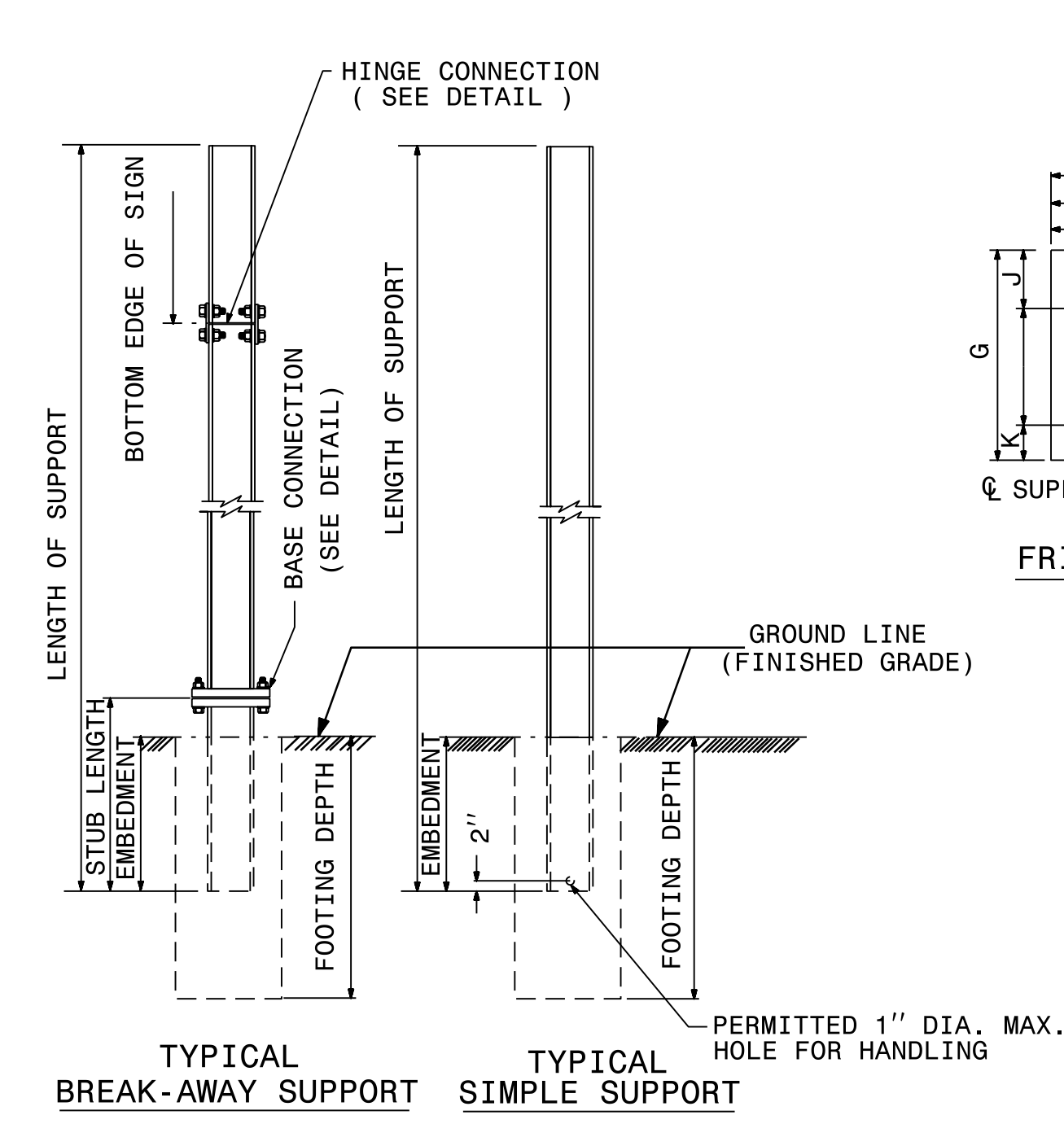


STATE OF NORTH CAROLINA
DEPT. OF TRANSPORTATION
DIVISION OF HIGHWAYS
RALEIGH, N.C.

1-12

ENGLISH STANDARD DRAWING FOR
GROUND MOUNTED SIGN SUPPORTS

SHEET 1 OF 3
903D10



SEE SHEET 2 OF 3 FOR
BASE CONNECTION DATA
HINGE CONNECTION DATA
& FOUNDATION DATA.
SEE SHEET 3 OF 3 FOR
GENERAL NOTES.

STATE OF NORTH CAROLINA
DEPT. OF TRANSPORTATION
DIVISION OF HIGHWAYS
RALEIGH, N.C.

1-12

ENGLISH STANDARD DRAWING FOR
GROUND MOUNTED SIGN SUPPORTS

SHEET 1 OF 3
903D10

I:\3318BB\Tr\ref\c\Signing\CADD\Quantities & GM_Signs\13318bb_sgn_tsh.dgn

DocuSigned by:
Ayman Alqudwah
F32AC5CAF8E472
APPROVED:
DATE: 7/15/2015



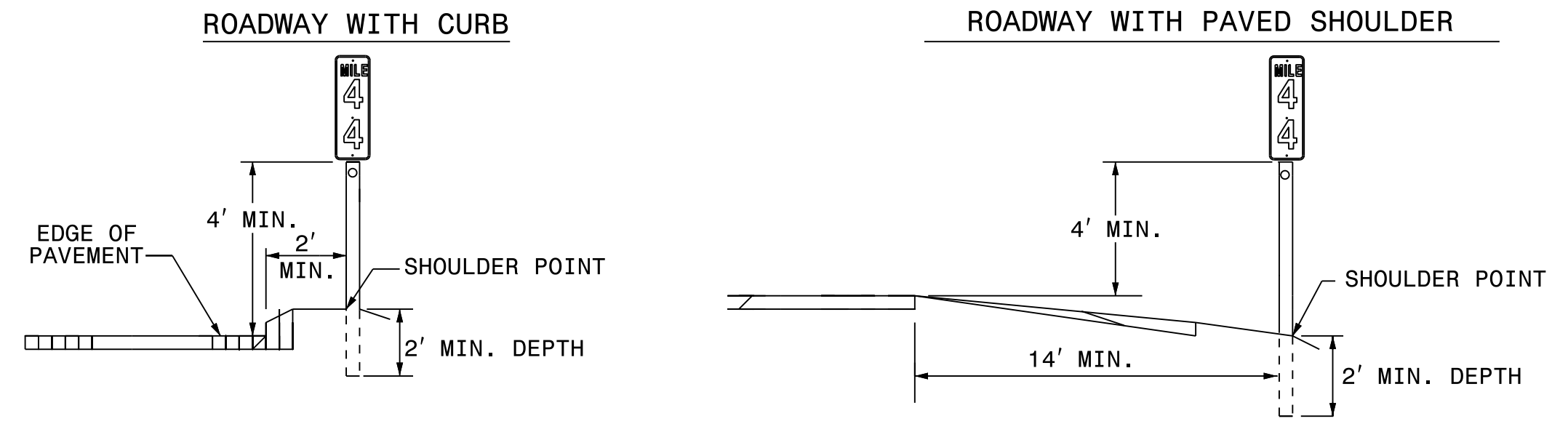
STATE OF NORTH CAROLINA
DEPT. OF TRANSPORTATION
DIVISION OF HIGHWAYS
RALEIGH, N.C.

1-12

ENGLISH STANDARD DRAWING FOR
MILEPOST AND PLACEMENT

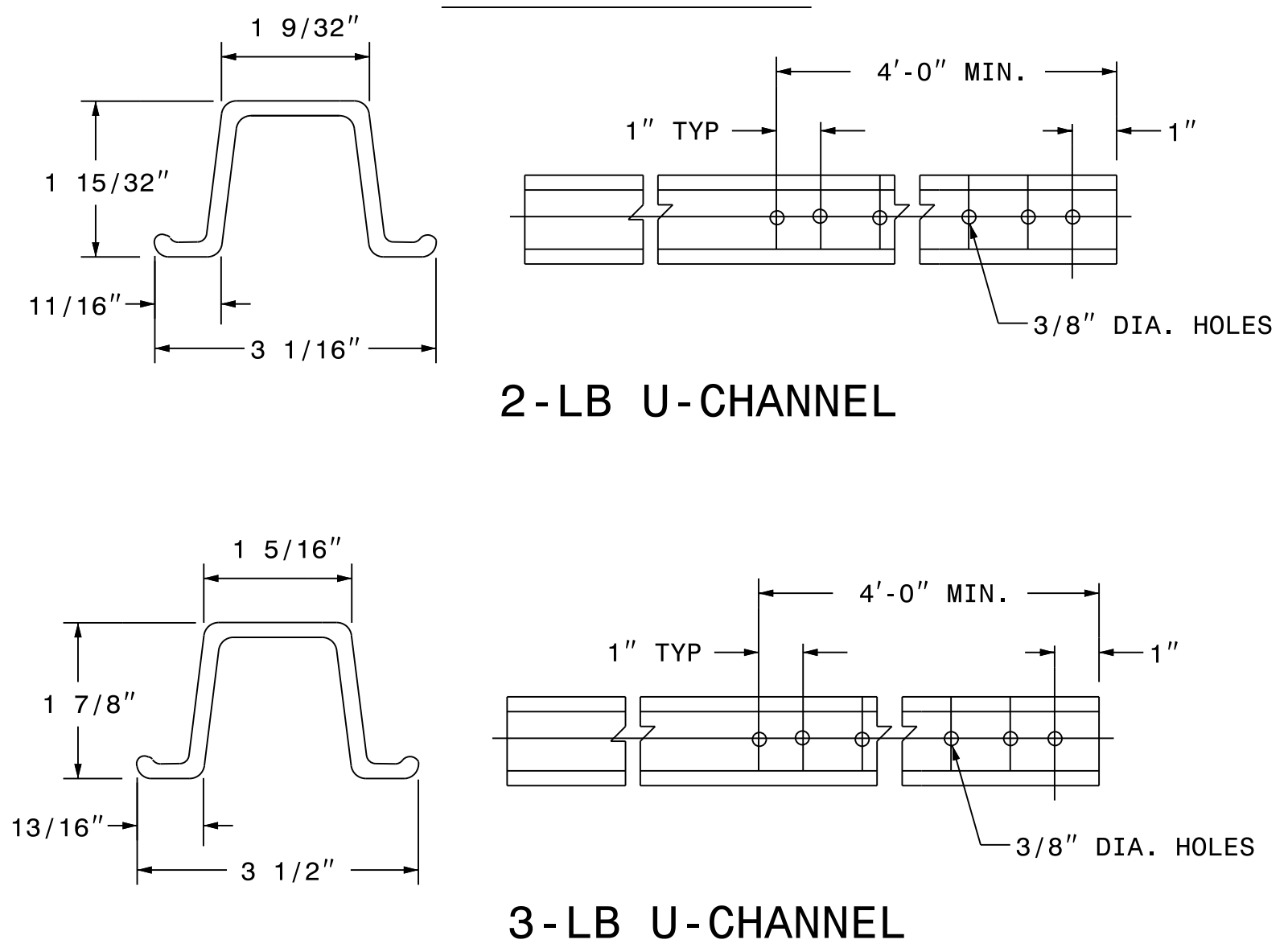
SHEET 1 OF 1
904D40

MILEPOST PLACEMENT

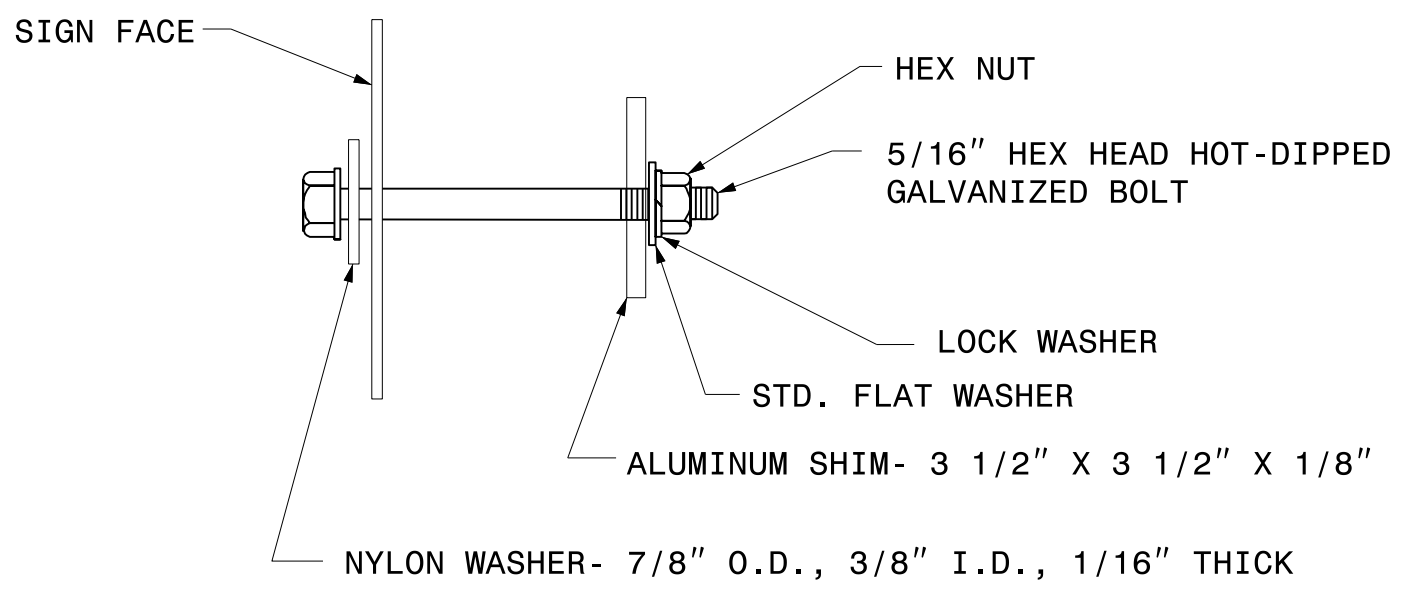


- NOTES:
1. A MILEPOST SIGN SHALL CONSIST OF ONE (1) 12" X 24", 12" X 36" OR 12" X 48" SIGN PANEL. AN ENHANCED REFERENCE LOCATION SIGN SHALL CONSIST OF ONE (1) 18" X 54" SIGN PANEL. AN INTERMEDIATE ENHANCED REFERENCE LOCATION SIGN SHALL CONSIST OF ONE (1) 18" X 60" SIGN PANEL.
 2. FABRICATE SIGNS FROM .080" SHEET ALUMINUM. EACH SIGN SHALL HAVE WHITE STUCK-ON MESSAGE AND BORDER ON GREEN BACKGROUND. MESSAGE, BORDER AND BACKGROUND TO BE REFLECTORIZED.
 3. MILEPOST LOCATION SIGNS REQUIRE ONE (1) 2-LB GALVANIZED STEEL U-CHANNEL POST AND ENHANCED REFERENCE LOCATION SIGNS REQUIRE ONE (1) 3-LB GALVANIZED STEEL U-CHANNEL POST. THE POST'S LENGTH MUST MEET THE REQUIREMENTS SHOWN IN THESE STANDARDS.
 4. POSTS SHALL BE DRIVEN. THE TOP OF POST SHALL NOT PROJECT ABOVE THE TOP OF SIGN.
 5. ATTACH EACH SIGN TO THE WIDE FACE (FLANGES) OF THE POST BY MEANS OF THE FOLLOWING COMBINATION- 5/16" HEX HEAD BOLT, NYLON WASHER, SHIM, FLAT WASHER, LOCK WASHER, HEX NUT. FULL CONTACT BETWEEN THE SIGN AND THE POST SHALL BE ACHIEVED. NO BUCKLING OF THE SIGN WILL BE PERMITTED.
 6. PLACE MILEPOST SIGNS AT THE SHOULDER POINT UNLESS THE ENGINEER DIRECTS OTHERWISE.

POST DETAILS



FASTENER



STATE OF NORTH CAROLINA
DEPT. OF TRANSPORTATION
DIVISION OF HIGHWAYS
RALEIGH, N.C.

1-12

ENGLISH STANDARD DRAWING FOR
MILEPOST AND PLACEMENT

SHEET 1 OF 1
904D40

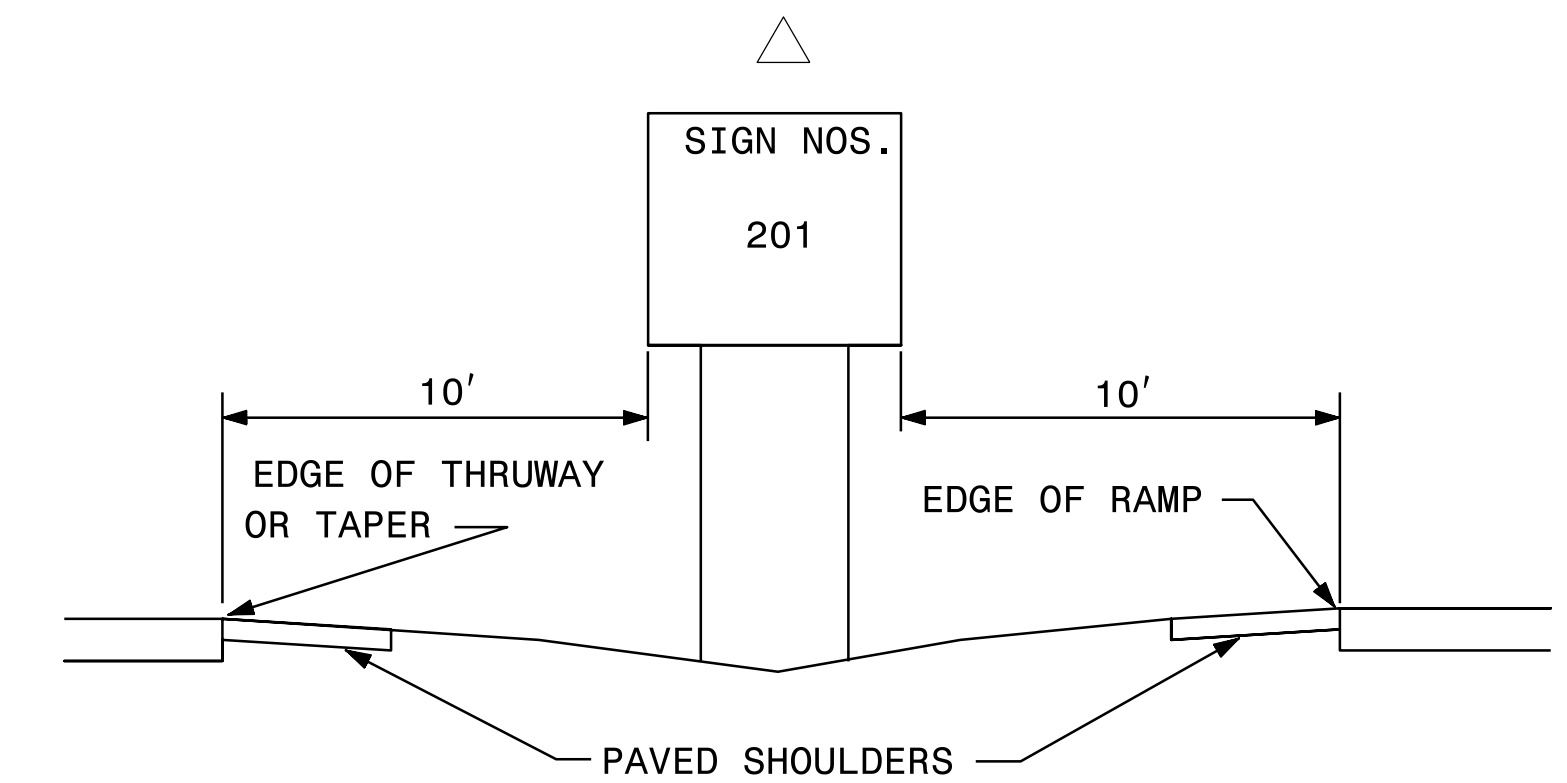
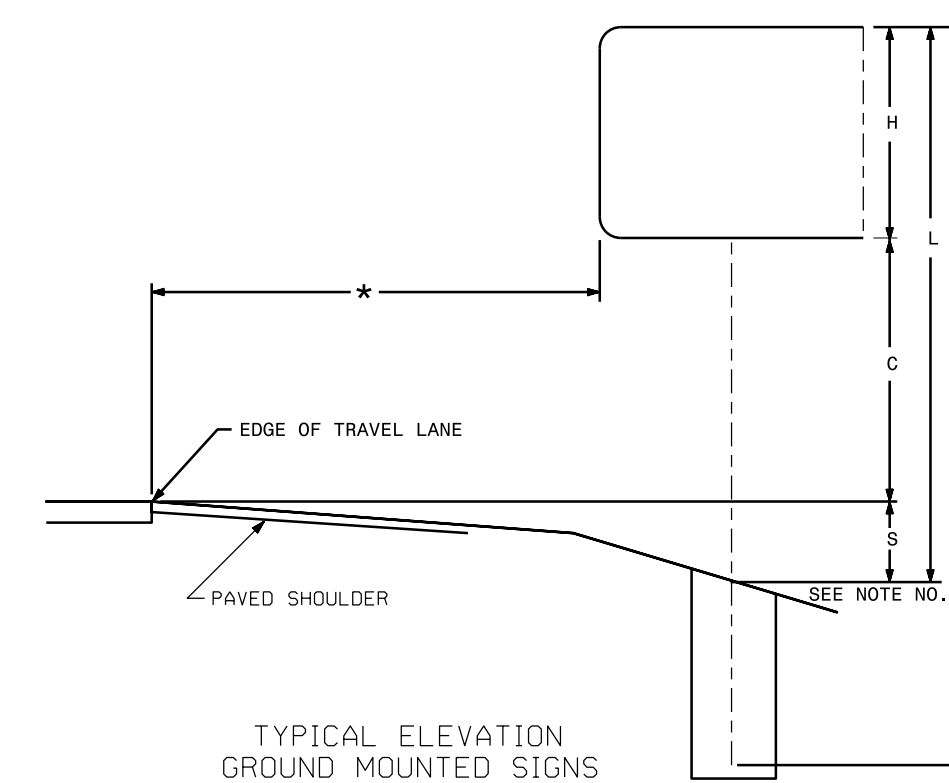
**REVISED SIGNING
ROADWAY STANDARD DRAWING**

I:\3318BB\Drawings\904D40.dwg & GM_Signs\13318bb_sgn_tsh.dgn
7/15/2015 10:47 AM

SIGN NO.	SIGN TYPE	SIGN SIZE (in.) w x h	ROADWAY STATION	NO. OF SUP.	BEAM SECTION	SUPPORT TYPE BA or S	ATTACH METHOD	MOUNTING METHOD	HORIZ. CLR. (ft.)	LENGTH (ft)			LEFT SUPPORT (ft)			CENTER SUPPORT (ft)			RIGHT SUPPORT (ft)			FOOTING DIAMETER (ft.)	FOOTING DEPTH (ft.)	B/A SUPPORT WEIGHTS (lbs.)	SIMPLE SUPPORT WEIGHTS (lbs.)	REINF. FTGS. (c.y.)	PLAIN FTGS. (c.y.)	FIELD VERIFIED SEE NOTE 2 (mm/dd/yy)																		
										SNS HT H	MTG HT C	EMBED-MENT	S	L	TOTAL LENGTH	S	L	TOTAL LENGTH	S	L	TOTAL LENGTH																									
101A 101B	B A	132 X 30 156 X 72	23+00 -L-	2	W6x16	S	1-R	N/A	49.50	6.00	7.00	6	2.50	15.50	21.50	0.00	0.00	0.00	5.08	18.08	24.08	1.5	6.5	0.00	729.28	0.85	0.00																			
201	A	96 X 60	17+80 -L-+/-	2	S3x5.7	BA	N/A	N/A	△	5.00	7.00	4	0.50	12.50	16.50	0.00	0.00	0.00	0.50	12.50	16.50	1	4.5	224.10	0.00	0.00	0.26																			
901	A	180 X 138	20+50 -L-	2	W8x21	BA	N/A	N/A	42.00	11.50	7.00	6.5	1.83	20.33	26.83	0.00	0.00	0.00	4.00	22.50	29.00	2	7	1318.43	0.00	1.63	0.00																			
902	A	180 X 120	33+00 -L-	2	W8x18	S	N/A	N/A	42.00	10.00	7.00	6	2.30	19.30	25.30	0.00	0.00	0.00	5.22	22.22	28.22	2	6.5	0.00	963.36	1.51	0.00																			
903	A	180 X 138	32+00 -L-	2	W10x22	S	N/A	N/A	46.00	11.50	7.00	6	2.96	21.46	27.46	0.00	0.00	0.00	5.87	24.37	30.37	2.5	6.5	0.00	1272.26	2.36	0.00																			
																						TOTAL	1542.53	TOTAL	2964.90	TOTAL	6.36	TOTAL	0.26																	
USE:																						1543	2965	7	1																					

NOTES

- DIMENSION "S" REPRESENTS AN INCREASE (+), OR A DECREASE (-) IN POLE LENGTH, RELATIVE TO THE ELEVATION OF THE EDGE OF PAVEMENT.
- FIELD VERIFICATIONS SHALL BE REQUIRED FOR ALL SUPPORTS, SEE (*) ARTICLE 903-3. FABRICATORS SHALL BE AISC CERTIFIED IN CATEGORY 1, SEE (*) ARTICLE 1072-1. (*) = N.C.D.O.T. STANDARD SPECIFICATIONS FOR ROADS AND STRUCTURES
- PLAN LOCATIONS FOR EXISTING UTILITIES ARE BASED ON THE BEST AVAILABLE INFORMATION AND, THEREFORE MAY NOT BE PRECISELY ACCURATE. THEREFORE, IT IS INCUMBENT UPON THE CONTRACTOR TO DETERMINE THE EXACT LOCATION OF UTILITIES BEFORE BEGINNING WORK IN A LOCATION.



GROUND MOUNTED SIGN SUPPORT CHART

I:\Projects\2015\10\48\13318BB\Traffic\Signing\CADD\Quantities & GM_Signs\13318bb_sgn_tsh.dgn
 11/17/2015 10:48 AM

APPROVED: *Ayman Aloudwah*
 DATE: 7/15/2015



SIGN NUMR: 201 BACKG. COLOR: Green DESIGN BY: DME CHK BY: AIA STD #: SSTN N. C. DEPARTMENT OF TRANSPORTATION
 TYPE: A Ground COPY COLOR: White PROJECT ID: I-3318BB DIV: 4 DATE: Mar 17, 2015 DIVISION OF HIGHWAYS
 QUANTITY: 1 TRANSPORTATION MOBILITY AND SAFETY
 SIGNING AND DELINEATION

SIGN WIDTH: 8'-0"
 HEIGHT: 5'-0"
 TOTAL AREA: 40.0 Sq.Ft.

SYMBOL	X	Y	WID	HT
AR_Type A	67	6	18.3	29.3

MAT'L: 0.125" ALUMINUM
 BORDER TYPE: FLUSH
 RECESS: 0"
 WIDTH: 1.5"
 RADII: 8"
 NO. Z BARS: 2
 LENGTH: 88.0 "

USE NOTES: 2,5
 1. Legend and border shall be direct applied Grade A reflective sheeting.
 2. Legend and border shall be direct applied Grade C reflective sheeting.
 3. Shields shall be Grade A reflective sheeting on 0.032" aluminum and demountable.
 4. Background shall be Grade B reflective sheeting.
 5. Background shall be Grade C reflective sheeting.
 6. Center arrow(s) vertically on sign.

Letter spacings are to start of next letter						Series/Size
	E	X	I	T		Text Length
	25.8	12.8	15.8	6.8	9	25.8
	1	0	5			E 2000
	12.4	9.5	18.2	14.6	41.3	44.4
						E 2000
						42.3

Spacing Factor is 1 unless specified otherwise
 FILENAME: GSENG

SIGN NUMR: 101B BACKG. COLOR: Green DESIGN BY: DME CHK BY: AIA STD #: SSTN N. C. DEPARTMENT OF TRANSPORTATION
 TYPE: A Ground COPY COLOR: White PROJECT ID: I-3318BB DIV: 4 DATE: Mar 17, 2015 DIVISION OF HIGHWAYS
 QUANTITY: 1 TRANSPORTATION MOBILITY AND SAFETY
 SIGNING AND DELINEATION

SIGN WIDTH: 13'-0"
 HEIGHT: 6'-0"
 TOTAL AREA: 78.0 Sq.Ft.

SYMBOL	X	Y	WID	HT
AR_Type B	67.7	9.2	22.3	25.3

MAT'L: 0.125" ALUMINUM
 BORDER TYPE: FLUSH
 RECESS: 0"
 WIDTH: 2"
 RADII: 9"
 NO. Z BARS: 2
 LENGTH: 148.0 "

USE NOTES: 2,5
 1. Legend and border shall be direct applied Grade A reflective sheeting.
 2. Legend and border shall be direct applied Grade C reflective sheeting.
 3. Shields shall be Grade A reflective sheeting on 0.032" aluminum and demountable.
 4. Background shall be Grade B reflective sheeting.
 5. Background shall be Grade C reflective sheeting.
 6. Center arrow(s) vertically on sign.

Letter spacings are to start of next letter											Series/Size
	B	a	g	l	e	y	R	d			Text Length
	14.8	16	15.5	17	8.2	13.8	13.6	16	15.8	10.6	14.8
											EM 2000
											126.4

Spacing Factor is 1 unless specified otherwise
 FILENAME: GSENG

SIGN NUMR: 101A BACKG. COLOR: Green DESIGN BY: DME CHK BY: AIA STD #: SSTN N. C. DEPARTMENT OF TRANSPORTATION
 TYPE: B Ground COPY COLOR: White PROJECT ID: I-3318BB DIV: 4 DATE: Mar 17, 2015 DIVISION OF HIGHWAYS
 QUANTITY: 1 TRANSPORTATION MOBILITY AND SAFETY
 SIGNING AND DELINEATION

SIGN WIDTH: 11'-0"
 HEIGHT: 2'-6"
 TOTAL AREA: 27.5 Sq.Ft.

SYMBOL	X	Y	WID	HT

MAT'L: 0.125" ALUMINUM
 BORDER TYPE: FLUSH
 RECESS: 0"
 WIDTH: 2"
 RADII: 3"
 NO. Z BARS: 2
 LENGTH: 124.0 "

USE NOTES: 2,5
 1. Legend and border shall be direct applied Grade A reflective sheeting.
 2. Legend and border shall be direct applied Grade C reflective sheeting.
 3. Shields shall be Grade A reflective sheeting on 0.032" aluminum and demountable.
 4. Background shall be Grade B reflective sheeting.
 5. Background shall be Grade C reflective sheeting.
 6. Center arrow(s) vertically on sign.

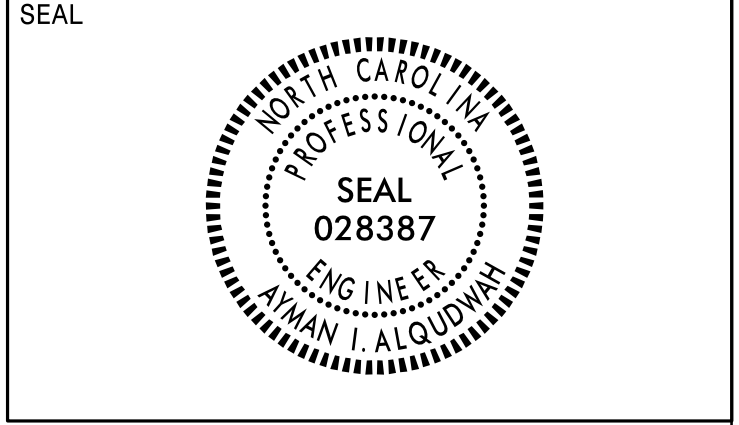
Letter spacings are to start of next letter											Series/Size
	E	X	I	T	1	0	5				Text Length
	25.6	8.9	10.7	3.5	7.5	15	7.9	15.2	12.2	25.6	
											E 2000
											80.9

Spacing Factor is 1 unless specified otherwise
 FILENAME: GSENG

13-JUL-2015 10:56
 P:\TIP-Proj\3318BB\Traffic\Sign\Signing\CADD\Sign_Designs\I-3318bb_sign_designs.dgn
 meaton AT 12/24/22

SIGN DESIGNS

APPROVED: *Ayman Aloudwah*
F332AC5CAF98472
 DATE: 7/15/2015



SIGN NUMR: 301,303 BACKG. COLOR: Green DESIGN BY: DME CHK BY: AIA STD #: SSTN N. C. DEPARTMENT OF TRANSPORTATION
 TYPE: D Ground COPY COLOR: White PROJECT ID: I-3318BB DIV: 4 DATE: Mar 17, 2015 DIVISION OF HIGHWAYS
 QUANTITY: 2 TRANSPORTATION MOBILITY AND SAFETY
 SIGNING AND DELINEATION

SIGN WIDTH: 7'-0"
 HEIGHT: 2'-0"
 TOTAL AREA: 14.0 Sq.Ft.

SYMBOL	X	Y	WID	HT

MAT'L: 0.125" ALUMINUM

BORDER TYPE: FLUSH
 RECESS: 0"
 WIDTH: 1.5"
 RADII: 3"

NO. Z BARS:
 LENGTH:

USE NOTES: 2,5
 1. Legend and border shall be direct applied Grade A reflective sheeting.
 2. Legend and border shall be direct applied Grade C reflective sheeting.
 3. Shields shall be Grade A reflective sheeting on 0.032" aluminum and demountable.
 4. Background shall be Grade B reflective sheeting.
 5. Background shall be Grade C reflective sheeting.
 6. Center arrow(s) vertically on sign.

Letter spacings are to start of next letter														Series/Size	
														Text Length	
	L	i	t	t	l	e		R	i	v	e	r			EM 2000
	6	7.6	3.8	5.8	6.6	3.9	5.3	7.5	8.5	3.8	7.7	7.6	4	6	72

Spacing Factor is 1 unless specified otherwise
 FILENAME: GSENG

SIGN NUMR: 302,304 BACKG. COLOR: Green DESIGN BY: DME CHK BY: AIA STD #: SSTN N. C. DEPARTMENT OF TRANSPORTATION
 TYPE: D Ground COPY COLOR: White PROJECT ID: I-3318BB DIV: 4 DATE: Mar 17, 2015 DIVISION OF HIGHWAYS
 QUANTITY: 2 TRANSPORTATION MOBILITY AND SAFETY
 SIGNING AND DELINEATION

SIGN WIDTH: 5'-0"
 HEIGHT: 2'-6"
 TOTAL AREA: 12.5 Sq.Ft.

SYMBOL	X	Y	WID	HT

MAT'L: 0.125" ALUMINUM

BORDER TYPE: FLUSH
 RECESS: 0"
 WIDTH: 0.75"
 RADII: 3"

NO. Z BARS:
 LENGTH:


USE NOTES: 2,5
 1. Legend and border shall be direct applied Grade A reflective sheeting.
 2. Legend and border shall be direct applied Grade C reflective sheeting.
 3. Shields shall be Grade A reflective sheeting on 0.032" aluminum and demountable.
 4. Background shall be Grade B reflective sheeting.
 5. Background shall be Grade C reflective sheeting.
 6. Center arrow(s) vertically on sign.

Letter spacings are to start of next letter														Series/Size	
														Text Length	
	P	A	R	T		O	F		T	H	E				D 2000
	12	3	4	3	2.5	4	3.7	2.5	4	3.1	3.7	2.5	12		35.9
		N	e	u	s	e									EM 2000
	16.4	6.4	5.8	5.7	5.3	4	16.4								27.1
		R	i	v	e	r		B	a	s	i	n			EM 2000
	7	5.4	2.4	4.8	4.8	2.5	5	5	4.8	4.8	3	3.3	7		46


Spacing Factor is 1 unless specified otherwise
 FILENAME: GSENG

13-JUL-2015 10:58
 P:\TIP-Proj\GIS\I-3318BB\Traffic\Signing\CADD\Sign Designs\I-3318BB_Sign Designs.dgn
 meaton AT 1E27492Z

SIGN DESIGNS

TIP NO. I-3318BB	SHEET NO. SIGN-3B
DocuSigned by: Approved: <i>Ayman Alqudus</i> <small>F32AC5CAF985472</small>	
DATE: 7/15/2015	
	


401 QUANTITY REQ'D 1



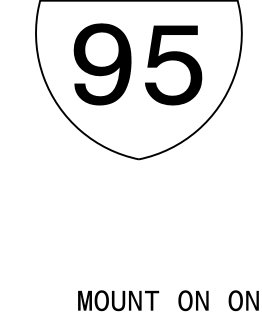
48" X 60"
R2-1

TWO "U" POSTS PER SIGN

501



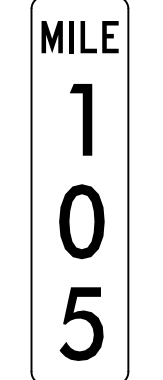
1 - 36" X 18"



1 - 36" X 36"

MOUNT ON ONE "U" POST

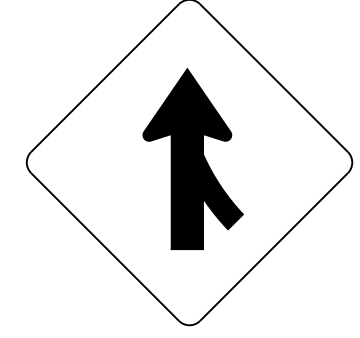
QUANTITY REQ'D 2



12" X 48"
D10-3

MOUNT ON ONE "U" POST

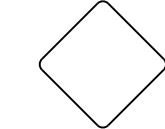
402 QUANTITY REQ'D 1



48" X 48"
W4-1

TWO "U" POSTS PER SIGN

403 QUANTITY REQ'D 3

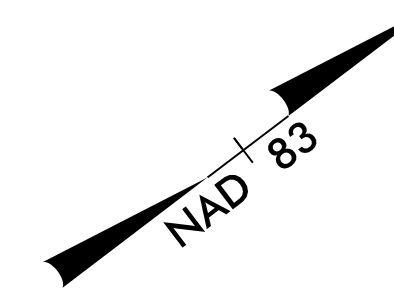


18" X 18"
OM4-3

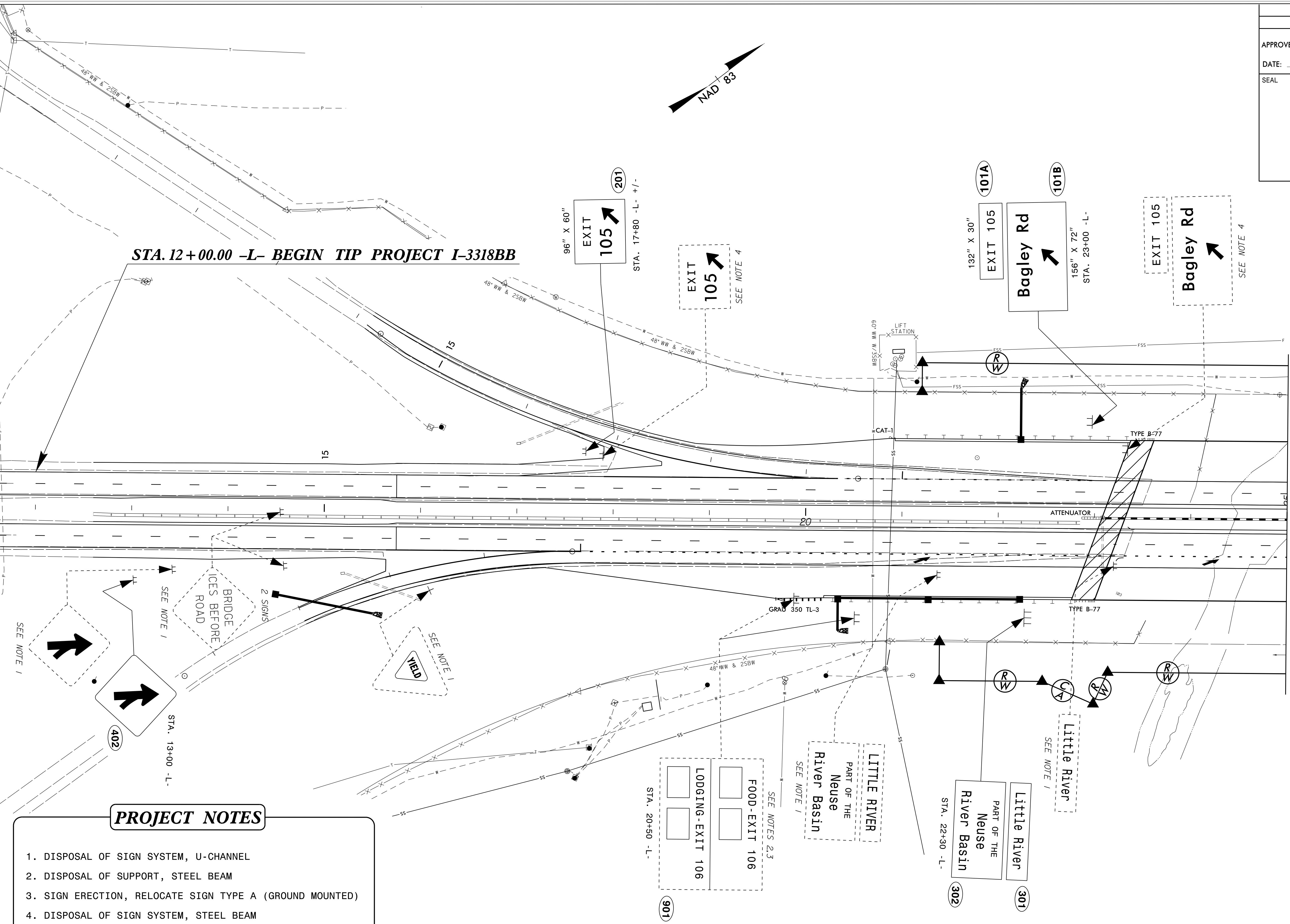
ONE "U" POST PER SIGN

**TYPE "E", "F"
AND MILEPOST SIGNS**

I:\3-JUL-2015 10:54
 P:\TIP-Proj\GIS-1\3318BB\Traffic\Signing\CADD\Quantities & GM Signs\3318bb_sgn_tsh.dgn
 meation AT 1E2/4922



STA. 12+00.00 -L- BEGIN TIP PROJECT I-3318BB



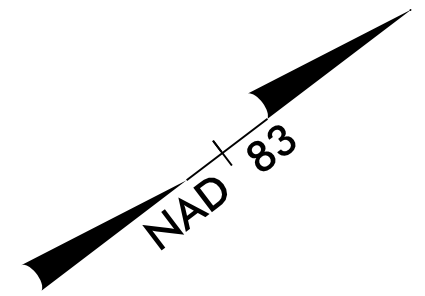
MATCHLINE 25+00 -L-
SEE SHEET PMP-5

PROJECT NOTES

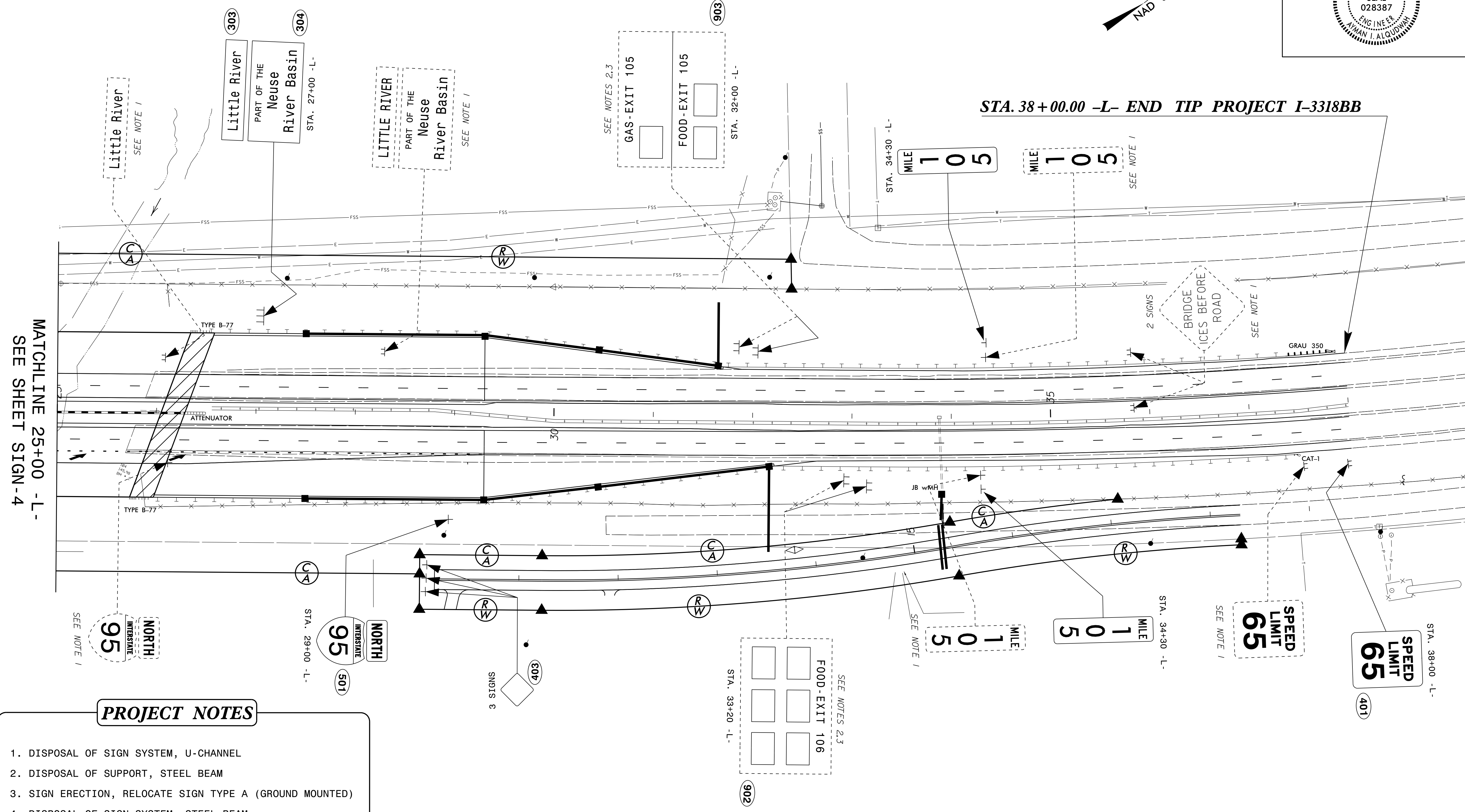
1. DISPOSAL OF SIGN SYSTEM, U-CHANNEL
2. DISPOSAL OF SUPPORT, STEEL BEAM
3. SIGN ERECTION, RELOCATE SIGN TYPE A (GROUND MOUNTED)
4. DISPOSAL OF SIGN SYSTEM, STEEL BEAM

EXISTING AND PROPOSED SIGNS

I:\3-JUL-2015 11:05
 P:\TIP-Proj\cts-1\I-3318BB\Traffic\Signing\CADD\Signing_Layout\Plans\I3318bb_sgn_psh1.dgn
 meaton AT 1E27492Z



STA. 38+00.00 -L- END TIP PROJECT I-3318BB



MATCHLINE 25+00 -L-
SEE SHEET SIGN-4

PROJECT NOTES

1. DISPOSAL OF SIGN SYSTEM, U-CHANNEL
2. DISPOSAL OF SUPPORT, STEEL BEAM
3. SIGN ERECTION, RELOCATE SIGN TYPE A (GROUND MOUNTED)
4. DISPOSAL OF SIGN SYSTEM, STEEL BEAM

EXISTING AND PROPOSED SIGNS