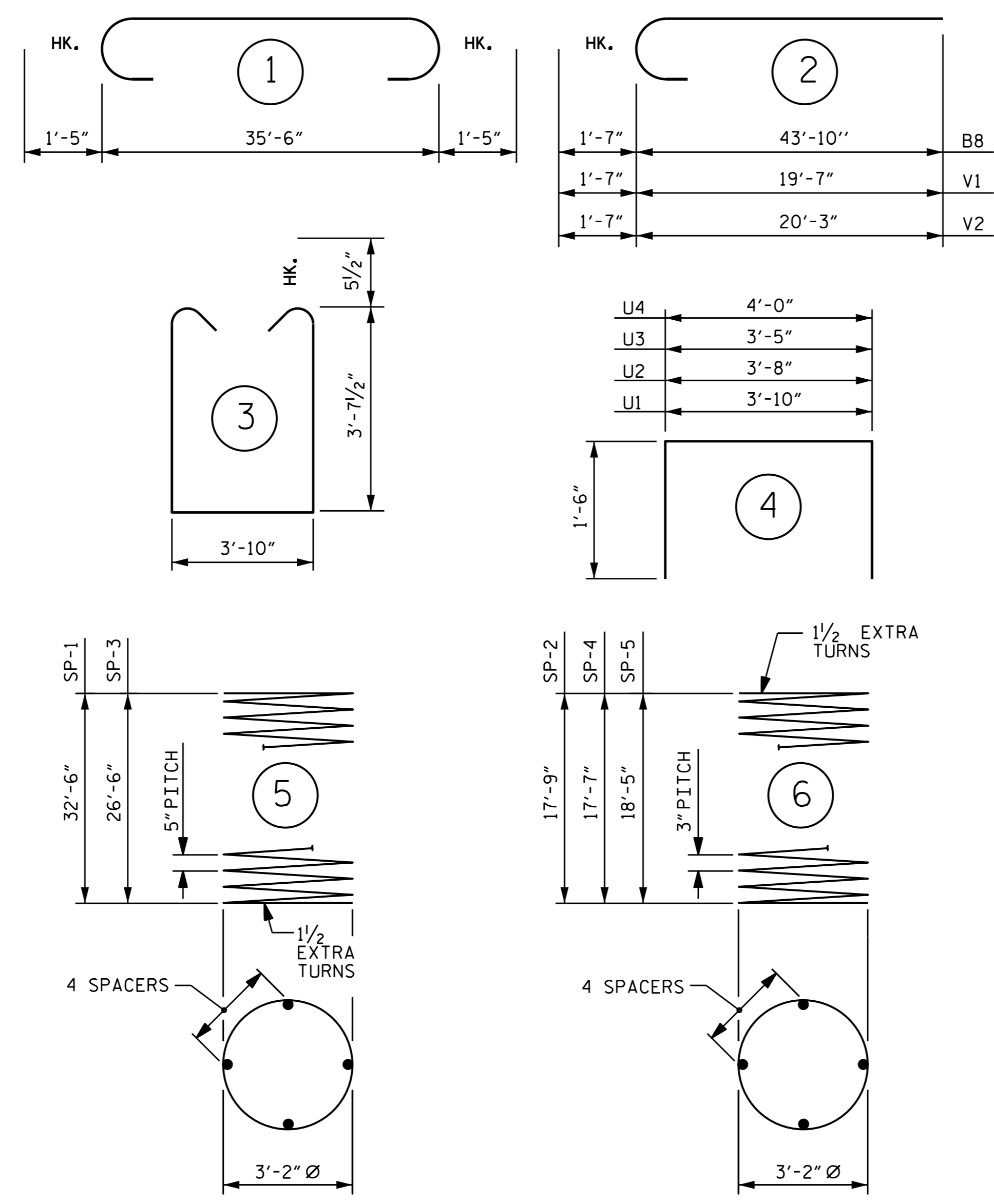
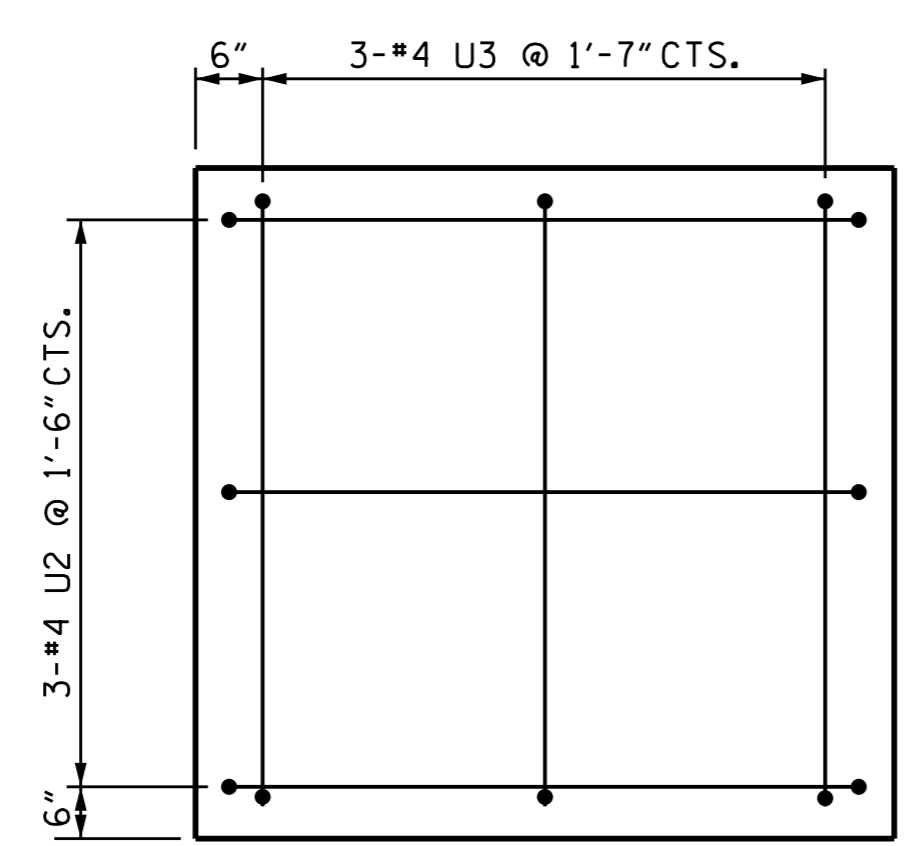


BAR TYPES

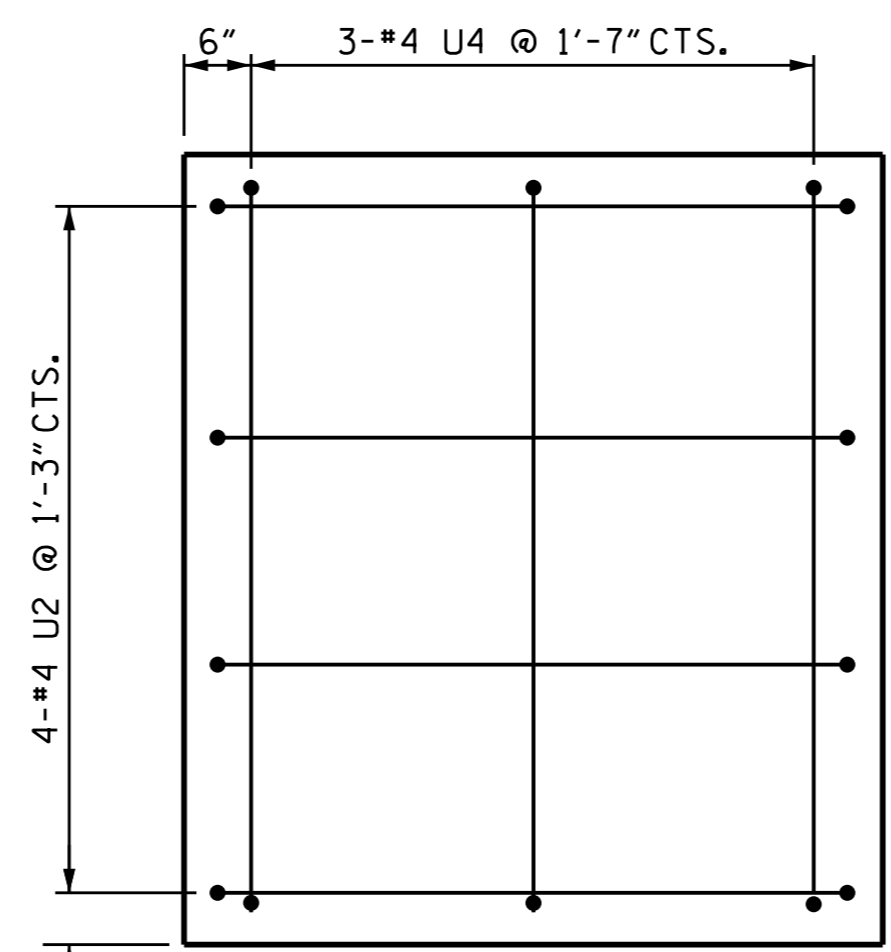


ALL BAR DIMENSIONS ARE OUT TO OUT.

** THE SP-1 & SP-3 SPIRAL REINFORCING STEEL SHALL BE W31 OR D-31 COLD DRAWN WIRE OR #5 PLAIN OR DEFORMED BAR.
 * THE SP-2, SP-4 & SP-5 SPIRAL REINFORCING STEEL SHALL BE W20 OR D-20 COLD DRAWN WIRE OR #4 PLAIN OR DEFORMED BAR.



VIEW W-W
STAGE I & II



VIEW X-X
STAGE I

BILL OF MATERIAL

BENT #1

STAGE I (LEFT SIDE)						STAGE I (RIGHT SIDE)						STAGE II					
BAR	NO.	SIZE	TYPE	LENGTH	WEIGHT	BAR	NO.	SIZE	TYPE	LENGTH	WEIGHT	BAR	NO.	SIZE	TYPE	LENGTH	WEIGHT
B1	8	#10	STR	35'-8"	1228	B1	8	#10	STR	35'-8"	1228	B7	16	#11	STR	57'-2"	4860
B2	8	#10	1	38'-4"	1320	B2	8	#10	1	38'-4"	1320	B8	16	#11	2	45'-5"	3861
B3	6	#5	STR	35'-8"	223	B3	6	#5	STR	35'-8"	223	B9	12	#5	STR	53'-9"	673
B4	8	#4	STR	25'-3"	135	B4	8	#4	STR	25'-3"	135	B10	8	#4	STR	26'-8"	143
B5	8	#4	STR	4'-3"	23	B5	8	#4	STR	4'-3"	23	B11	16	#4	STR	18'-0"	192
B6	3	#4	STR	3'-10"	8	B6	3	#4	STR	3'-10"	8	B12	8	#11	STR	43'-10"	1863
M1	28	#11	STR	42'-11"	6384	M2	28	#11	STR	36'-11"	5492	M1	14	#11	STR	42'-11"	3192
S1	54	#5	3	12'-0"	676	S1	54	#5	3	12'-0"	676	M2	70	#11	STR	36'-11"	13730
U1	40	#4	4	6'-10"	183	U1	40	#4	4	6'-10"	183	S1	107	#5	3	12'-0"	1339
U2	7	#4	4	6'-8"	31	U2	7	#4	4	6'-8"	31	U1	116	#4	4	6'-10"	529
U3	3	#4	4	6'-5"	13	U3	3	#4	4	6'-5"	13	U2	6	#4	4	6'-8"	27
U4	3	#4	4	7'-0"	14	U4	3	#4	4	7'-0"	14	U3	6	#4	4	6'-5"	26
V1	28	#11	2	21'-2"	3149	V1	28	#11	2	21'-2"	3149	V2	84	#11	2	21'-10"	9744

REINFORCING STEEL FOR BENT No. 1 13387 LBS. REINFORCING STEEL FOR BENT No. 1 12495 LBS. REINFORCING STEEL FOR BENT No. 1 40179 LBS.

SP-1	2	**	5	784'-6"	1636	SP-3	2	**	5	643'-6"	1342	SP-1	1	**	5	784'-6"	818
SP-2	2	*	6	712'-0"	951	SP-4	2	*	6	705'-9"	942	SP-3	5	**	5	643'-5"	3356

SPIRAL COLUMN REINFORCING STEEL 2587 LBS. SPIRAL COLUMN REINFORCING STEEL 2284 LBS. SPIRAL COLUMN REINFORCING STEEL 7133 LBS.

CLASS A CONCRETE BREAKDOWN			CLASS A CONCRETE BREAKDOWN			CLASS A CONCRETE BREAKDOWN		
POUR #2 (COLUMNS)	12.5 C.Y.		POUR #2 (COLUMNS)	12.4 C.Y.		POUR #2 (COLUMNS)	38.9 C.Y.	
POUR #3 (CAP)	23.9 C.Y.		POUR #3 (CAP)	23.9 C.Y.		POUR #3 (CAP)	68.2 C.Y.	
TOTAL	36.4 C.Y.		TOTAL	36.3 C.Y.		TOTAL	107.1 C.Y.	

DRILLED PIERS		DRILLED PIERS		DRILLED PIERS	
DRILLED PIER CONCRETE		DRILLED PIER CONCRETE		DRILLED PIER CONCRETE	
POUR 1 (DRILLED PIERS):	30.7 C.Y.	POUR 1 (DRILLED PIERS):	25.1 C.Y.	POUR 1 (DRILLED PIERS):	78.2 C.Y.
CSL TUBES	276 FT.	CSL TUBES	228 FT.	CSL TUBES	708 FT.
4'-0" Ø DRILLED PIERS	66.0 LIN. FT.	4'-0" Ø DRILLED PIERS	54.0 LIN. FT.	4'-0" Ø DRILLED PIERS	168 LIN. FT.

SUMMARY BILL OF MATERIAL

REINFORCING STEEL _____ 66061 LBS.
 SPIRAL COLUMN REINFORCING STEEL _____ 12004 LBS.
 CLASS A CONCRETE _____ 179.8 C.Y.
 4'-0" Ø DRILLED PIERS _____ 288.0 LIN. FT.

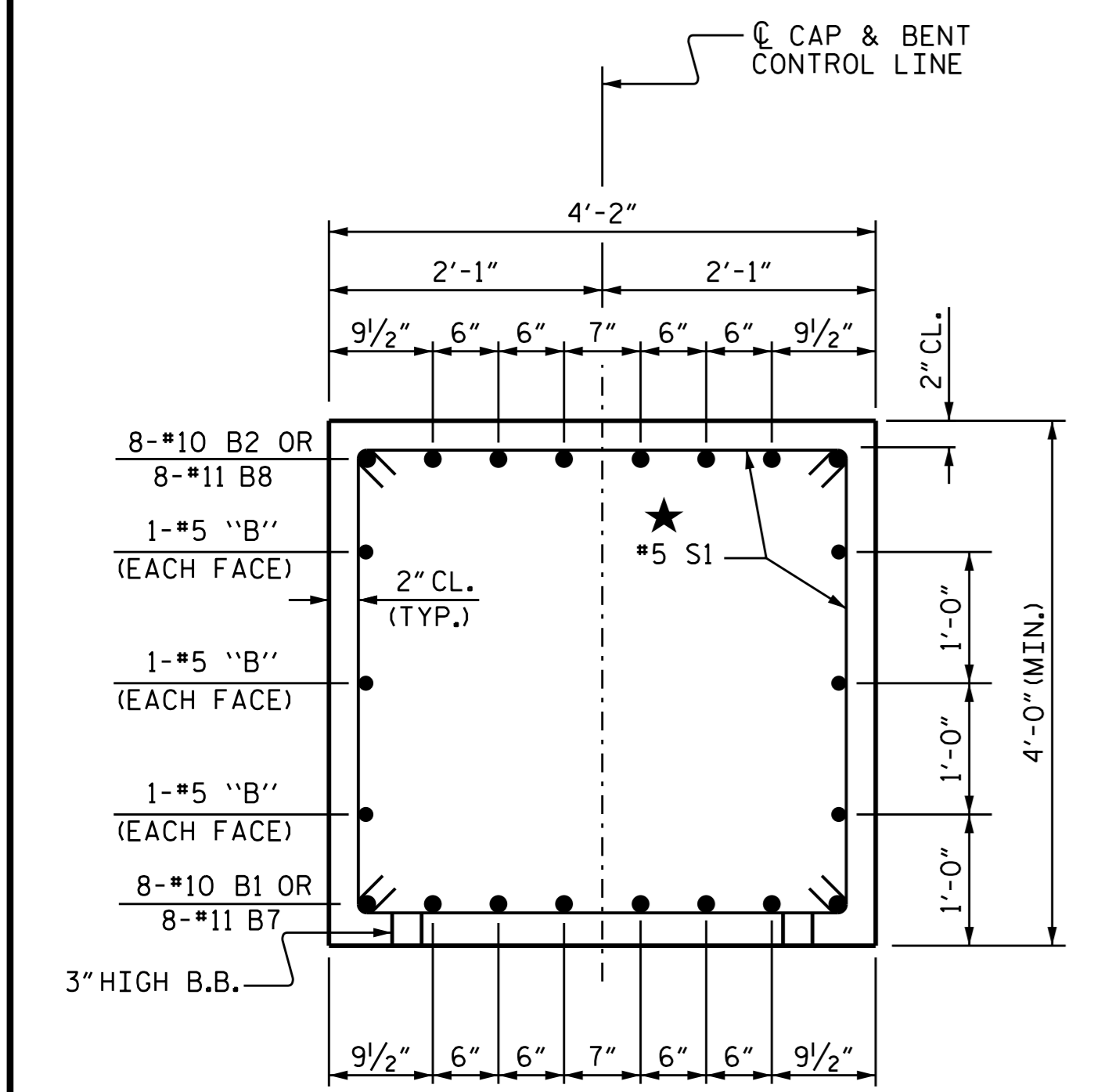
PROJECT NO. I-3318BB
 JOHNSTON COUNTY
 STATION: 24+68.00 -L-

SHEET 5 OF 5

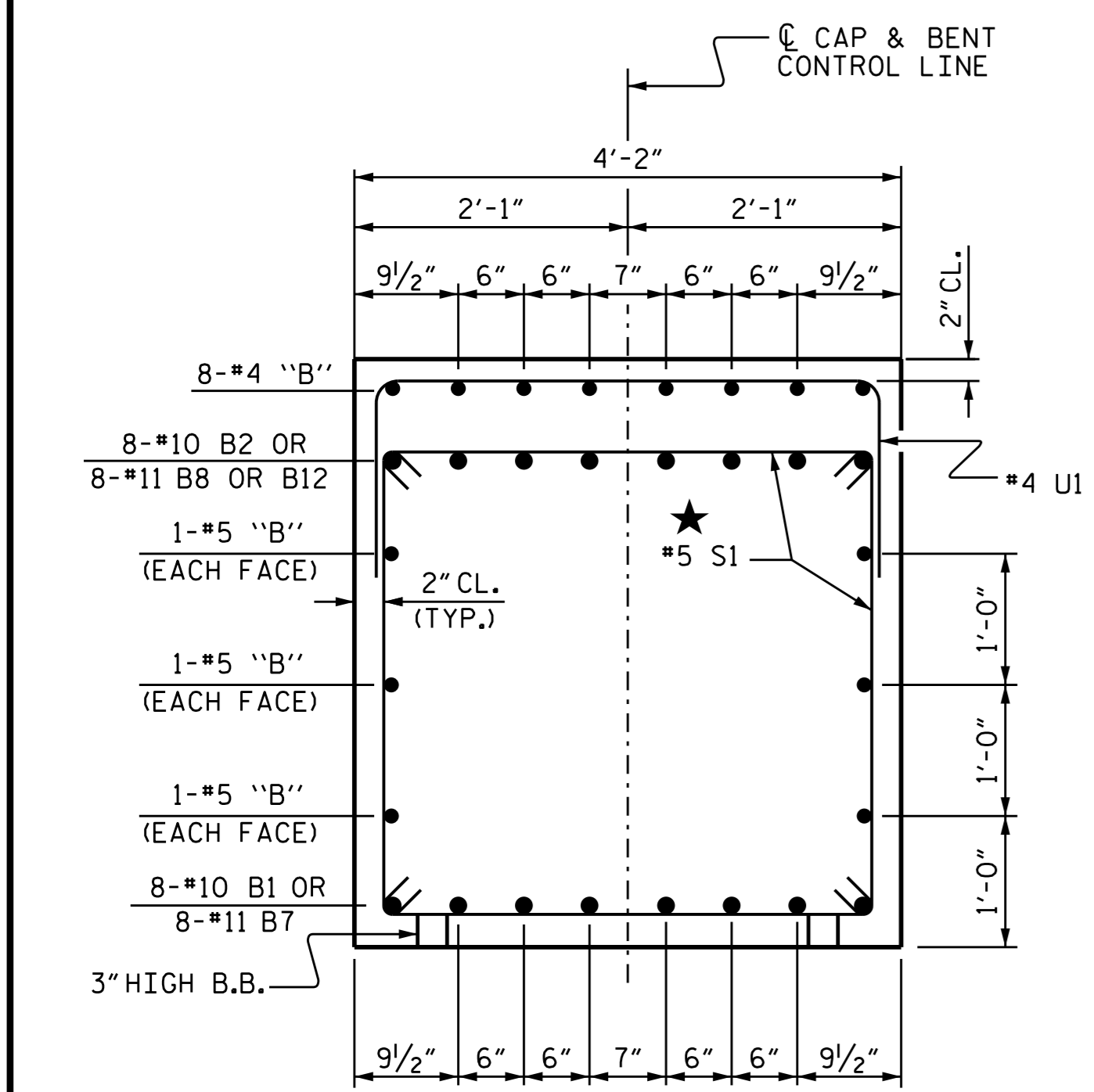
STATE OF NORTH CAROLINA
 DEPARTMENT OF TRANSPORTATION
 RALEIGH

BENT #1
STAGE I & II

REVISIONS						SHEET NO.	
NO.	BY:	DATE:	NO.	BY:	DATE:	TOTAL SHEETS	
1			3			5	
2			4			78	



SECTION A-A
STAGE I & II



SECTION B-B
STAGE I & II

★ INVERT ALTERNATE STIRRUPS

DRAWN BY: B. N. BARODAWALA DATE: 4-22-15
 CHECKED BY: D. G. ELY DATE: 6-3-15
 DESIGN ENGINEER OF RECORD: M. AHMED DATE: 8-6-15