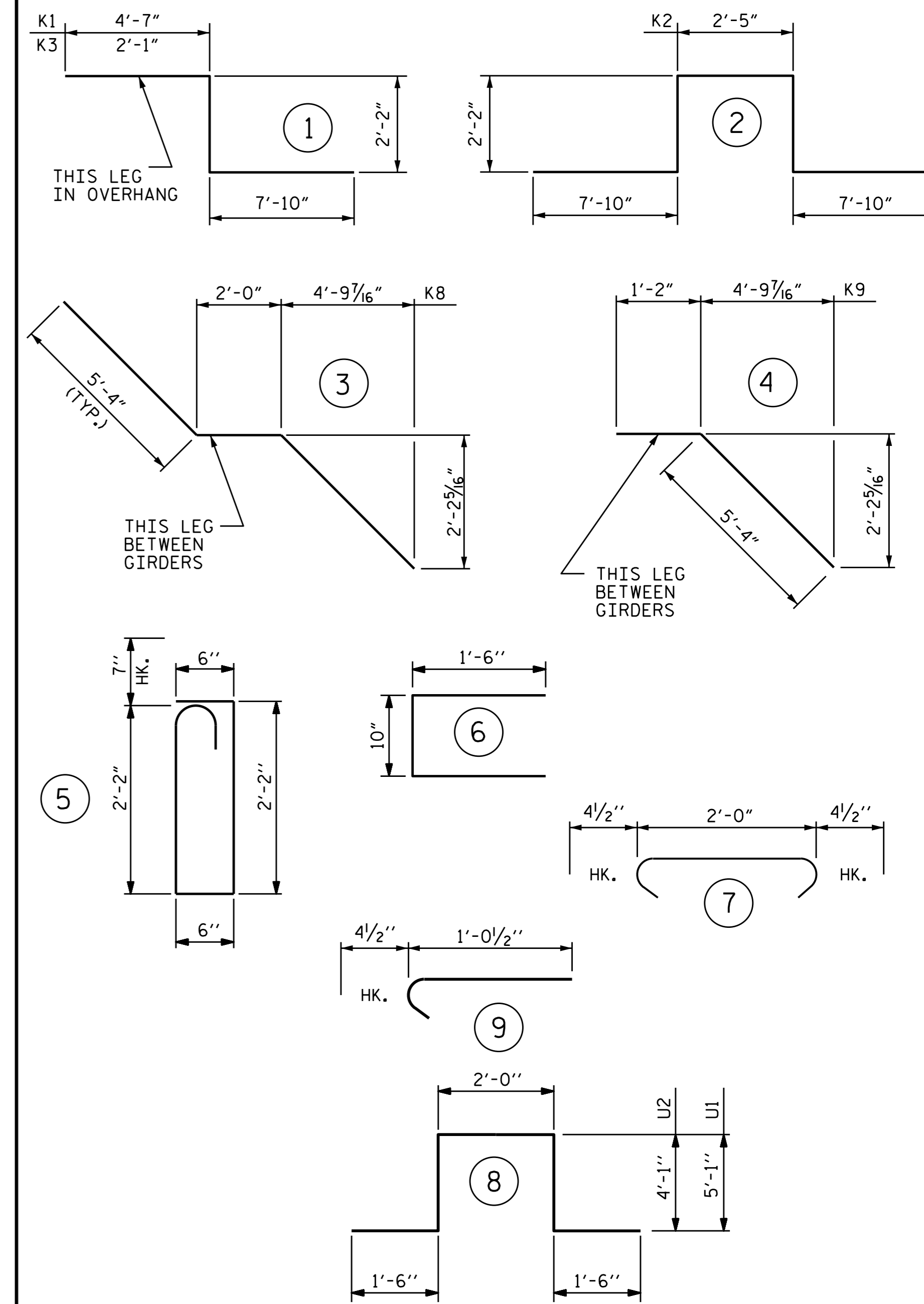


REINFORCING BAR SCHEDULE

STAGE I - LEFT SIDE										STAGE I - RIGHT SIDE													
BAR	NO.	SIZE	TYPE	LENGTH	WEIGHT	BAR	NO.	SIZE	TYPE	LENGTH	WEIGHT	BAR	NO.	SIZE	TYPE	LENGTH	WEIGHT	BAR	NO.	SIZE	TYPE	LENGTH	WEIGHT
* A1	564	#5	STR	33'-3"	19559	A216	2	#5	STR	13'-2"	27	* A1	564	#5	STR	33'-3"	19559	A216	2	#5	STR	13'-2"	27
A2	564	#5	STR	33'-3"	19559	A217	2	#5	STR	11'-10"	25	A2	564	#5	STR	33'-3"	19559	A217	2	#5	STR	11'-10"	25
						A218	2	#5	STR	10'-7"	22							A218	2	#5	STR	10'-7"	22
* A101	2	#5	STR	32'-0"	67	A219	2	#5	STR	9'-4"	19	* A101	2	#5	STR	32'-0"	67	A219	2	#5	STR	9'-4"	19
* A102	2	#5	STR	30'-9"	64	A220	2	#5	STR	8'-1"	17	* A102	2	#5	STR	30'-9"	64	A220	2	#5	STR	8'-1"	17
* A103	2	#5	STR	29'-6"	62	A221	2	#5	STR	6'-10"	14	* A103	2	#5	STR	29'-6"	62	A221	2	#5	STR	6'-10"	14
* A104	2	#5	STR	28'-3"	59	A222	2	#5	STR	5'-7"	12	* A104	2	#5	STR	28'-3"	59	A222	2	#5	STR	5'-7"	12
* A105	2	#5	STR	27'-0"	56	A223	2	#5	STR	4'-4"	9	* A105	2	#5	STR	27'-0"	56	A223	2	#5	STR	4'-4"	9
* A106	2	#5	STR	25'-9"	54	A224	2	#5	STR	3'-1"	6	* A106	2	#5	STR	25'-9"	54	A224	2	#5	STR	3'-1"	6
* A107	2	#5	STR	24'-5"	51							* A107	2	#5	STR	24'-5"	51						
* A108	2	#5	STR	23'-2"	48							* A108	2	#5	STR	23'-2"	48						
* A109	2	#5	STR	21'-11"	46	* B1	138	#4	STR	21'-3"	1959	* A109	2	#5	STR	21'-11"	46	* B1	138	#4	STR	21'-3"	1959
* A110	2	#5	STR	20'-8"	43	* B2	46	#7	STR	19'-3"	1810	* A110	2	#5	STR	20'-8"	43	* B2	46	#7	STR	19'-3"	1810
* A111	2	#5	STR	19'-5"	41	* B3	46	#7	STR	51'-0"	4795	* A111	2	#5	STR	19'-5"	41	* B3	46	#7	STR	51'-0"	4795
* A112	2	#5	STR	18'-2"	38	* B4	23	#4	STR	29'-5"	452	* A112	2	#5	STR	18'-2"	38	* B4	23	#4	STR	29'-5"	452
* A113	2	#5	STR	16'-11"	35	* B5	215	#5	STR	55'-10"	12520	* A113	2	#5	STR	16'-11"	35	* B5	215	#5	STR	55'-10"	12520
* A114	2	#5	STR	15'-8"	33	* B6	44	#7	STR	28'-0"	2518	* A114	2	#5	STR	15'-8"	33	* B6	44	#7	STR	28'-0"	2518
* A115	2	#5	STR	14'-4"	30							* A115	2	#5	STR	14'-4"	30						
* A116	2	#5	STR	13'-2"	27	* D1	1076	#5	STR	4'-8"	5237	* A116	2	#5	STR	13'-2"	27	* D1	1076	#5	STR	4'-8"	5237
* A117	2	#5	STR	11'-10"	25							* A117	2	#5	STR	11'-10"	25						
* A118	2	#5	STR	10'-7"	22	* G1	2	#5	STR	35'-5"	74	* A118	2	#5	STR	10'-7"	22	* G1	2	#5	STR	35'-5"	74
* A119	2	#5	STR	9'-4"	19							* A119	2	#5	STR	9'-4"	19						
* A120	2	#5	STR	8'-1"	17	* J1	68	#4	9	1'-5"	64	* A120	2	#5	STR	8'-1"	17	* J1	68	#4	9	1'-5"	64
* A121	2	#5	STR	6'-10"	14							* A121	2	#5	STR	6'-10"	14						
* A122	2	#5	STR	5'-7"	12	* K1	4	#8	1	14'-7"	156	* A122	2	#5	STR	5'-7"	12	* K1	4	#8	1	14'-7"	156
* A123	2	#5	STR	4'-4"	9	* K2	8	#8	2	22'-5"	479	* A123	2	#5	STR	4'-4"	9	* K2	8	#8	2	22'-5"	479
* A124	2	#5	STR	3'-1"	6	* K3	4	#8	1	12'-1"	129	* A124	2	#5	STR	3'-1"	6	* K3	4	#8	1	12'-1"	129
						K8	20	#4	3	12'-8"	169							K8	20	#4	3	12'-8"	169
						K9	20	#4	4	6'-6"	87							K9	20	#4	4	6'-6"	87
A201	2	#5	STR	32'-0"	67	K10	12	#4	STR	6'-7"	53	A201	2	#5	STR	32'-0"	67	K10	12	#4	STR	6'-7"	53
A202	2	#5	STR	30'-9"	64	K11	12	#4	STR	8'-6"	68	A202	2	#5	STR	30'-9"	64	K11	12	#4	STR	8'-6"	68
A203	2	#5	STR	29'-6"	62	K12	24	#4	STR	9'-3"	148	A203	2	#5	STR	29'-6"	62	K12	24	#4	STR	9'-3"	148
A204	2	#5	STR	28'-3"	59	K13	12	#4	STR	8'-3"	66	A204	2	#5	STR	28'-3"	59	K13	12	#4	STR	8'-3"	66
A205	2	#5	STR	27'-0"	56	* K26	18	#6	STR	8'-3"	223	A205	2	#5	STR	27'-0"	56	* K26	18	#6	STR	8'-3"	223
A206	2	#5	STR	25'-9"	54							A206	2	#5	STR	25'-9"	54						
A207	2	#5	STR	24'-5"	51	* S1	54	#5	5	5'-11"	333	A207	2	#5	STR	24'-5"	51	* S1	54	#5	5	5'-11"	333
A208	2	#5	STR	23'-2"	48	* S2	54	#4	6	3'-10"	138	A208	2	#5	STR	23'-2"	48	* S2	54	#4	6	3'-10"	138
A209	2	#5	STR	21'-11"	46	* S3	180	#4	7	2'-9"	331	A209	2	#5	STR	21'-11"	46	* S3	180	#4	7	2'-9"	331
A210	2	#5	STR	20'-8"	43							A210	2	#5	STR	20'-8"	43						
A211	2	#5	STR	19'-5"	41	U1	36	#4	8	15'-2"	365	A211	2	#5	STR	19'-5"	41	U1	36	#4	8	15'-2"	365
A212	2	#5	STR	18'-2"	38	U2	12	#4	8	13'-2"	106	A212	2	#5	STR	18'-2"	38	U2	12	#4	8	13'-2"	106
A213	2	#5	STR	16'-11"	35	REINFORCING STEEL LBS. 34,019					A213	2	#5	STR	16'-11"	35	REINFORCING STEEL LBS. 34,019						
A214	2	#5	STR	15'-8"	33	* EPOXY COATED REINFORCING STEEL LBS. 38,804					A214	2	#5	STR	15'-8"	33	* EPOXY COATED REINFORCING STEEL LBS. 38,804						
A215	2	#5	STR	14'-4"	30						A215	2	#5	STR	14'-4"	30							

BAR TYPES



ALL BAR DIMENSIONS ARE OUT TO OUT.

SUPERSTRUCTURE BILL OF MATERIAL

	STAGE I-LEFT SIDE (LBS.)	STAGE I-RIGHT SIDE (LBS.)	TOTAL STAGE I** (LBS.)
REINFORCING STEEL	34,019	34,019	68,038
* EPOXY COATED REINFORCING STEEL	38,804	38,804	77,608

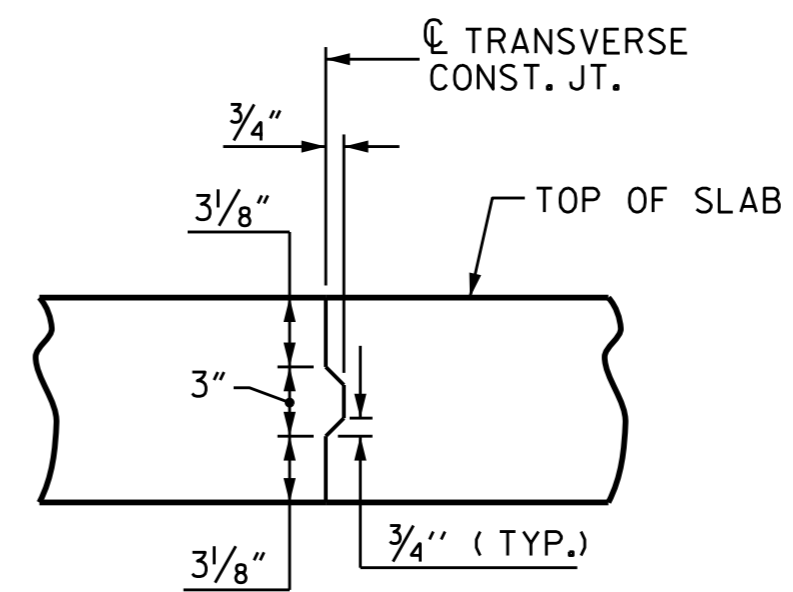
GROOVING BRIDGE FLOORS

	BRIDGE DECK (SQ. FT.)	APPROACH SLABS (SQ. FT.)
STAGE I-LEFT SIDE	8,308	1,886
STAGE I-RIGHT SIDE	8,308	1,886
STAGE I TOTALS	16,616	3,772

CONCRETE QUANTITIES

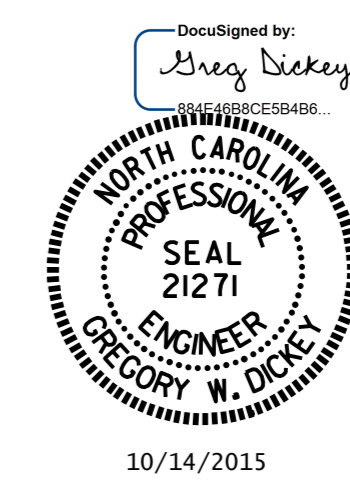
	STAGE I-LEFT SIDE (CU. YDS.)	STAGE I-RIGHT SIDE (CU. YDS.)	TOTAL STAGE I (CU. YDS.)
POUR 1	90.8	90.8	181.6
POUR 2	110.7	110.7	221.4
POUR 3	116.1	116.1	232.2
POUR 4	10.0	10.0	20.0
TOTAL **	327.6	327.6	655.2

**QUANTITIES FOR PARAPETS AND MEDIAN BARRIER RAILS ARE NOT INCLUDED



TRANSVERSE CONSTRUCTION JOINT DETAIL

NOTE: REINFORCING STEEL IN SLAB NOT SHOWN. LONGITUDINAL REINFORCING STEEL SHALL BE CONTINUOUS THRU JOINT



PROJECT NO. I-3318BB
JOHNSTON COUNTY
 STATION: 24+68.00 -L-

SHEET 1 OF 3

REVISIONS						SHEET NO.
NO.	BY	DATE	NO.	BY	DATE	S-42
3			4			TOTAL SHEETS 78

DRAWN BY: D. G. ELY DATE: 4/2/15
 CHECKED BY: B. N. BARODAWALA DATE: 5/15
 DESIGN ENGINEER OF RECORD: M. L. RORIE DATE: 8/15