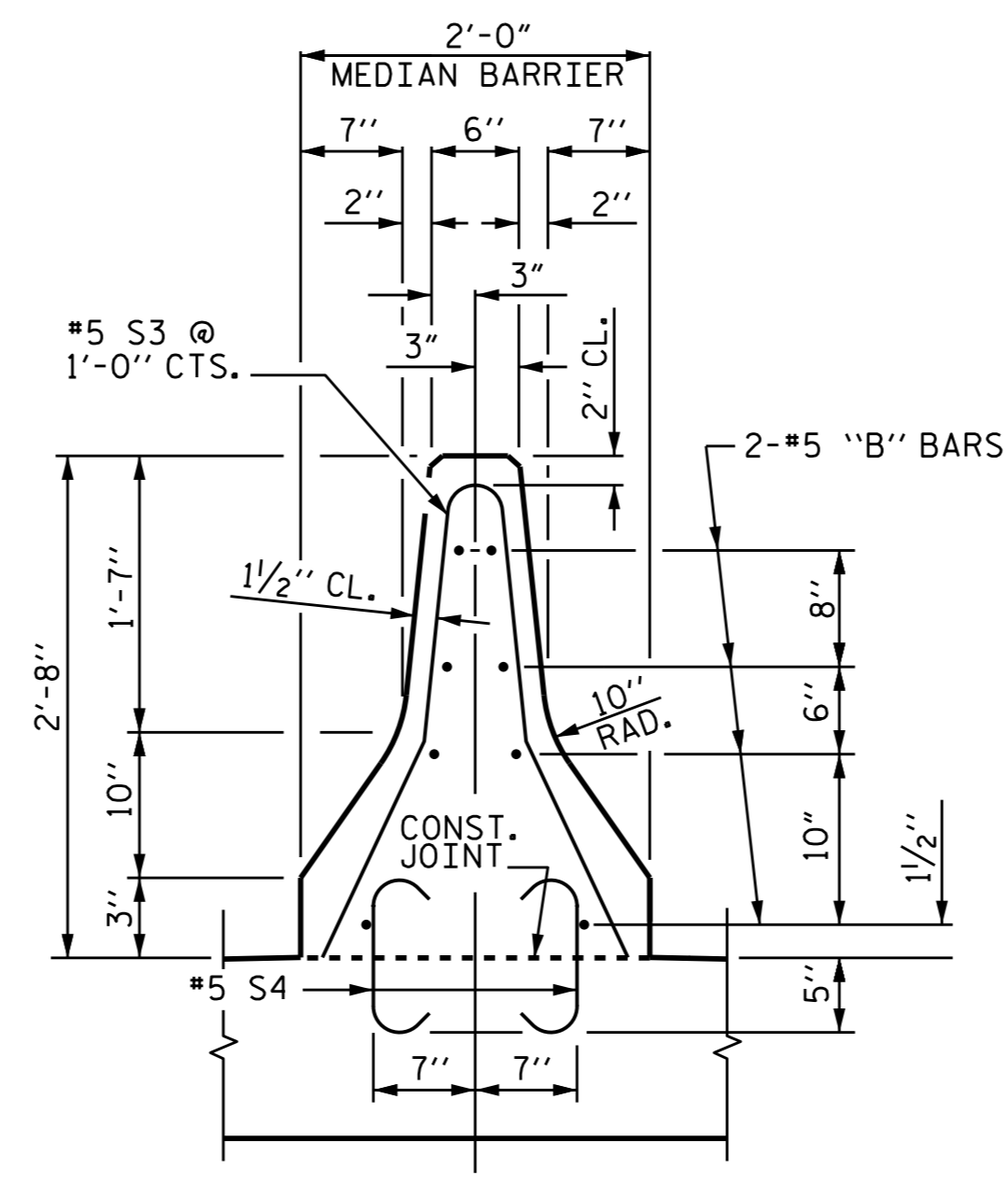
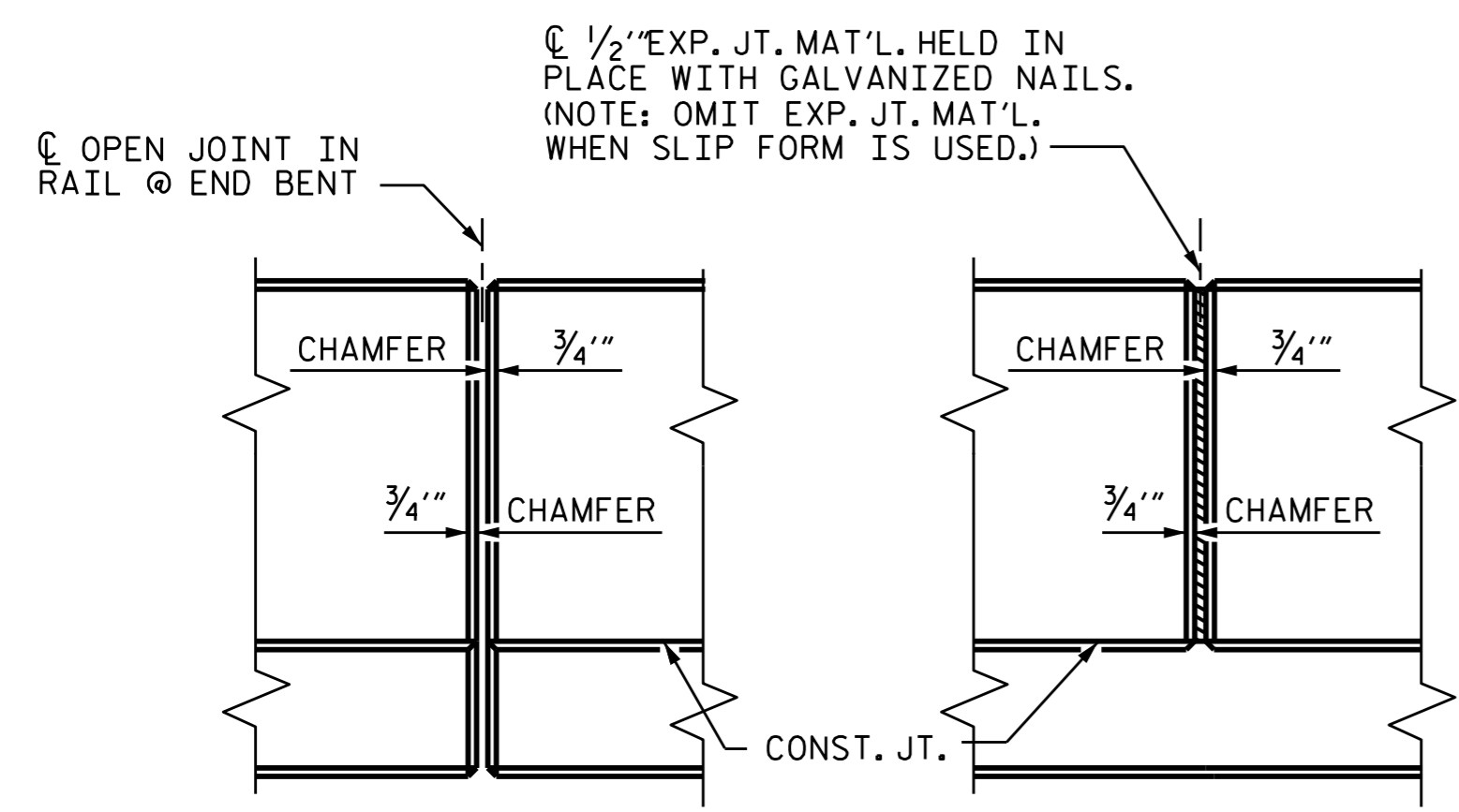


BILL OF MATERIAL					
STAGE II					
BAR	NO.	SIZE	TYPE	LENGTH	WEIGHT
*B1	4	#5	STR	17'-8"	74
*B2	4	#5	STR	18'-0"	75
*B3	48	#5	STR	23'-7"	1181
*B4	16	#5	STR	21'-7"	360
*B5	16	#5	STR	22'-7"	377
*B6	4	#5	STR	17'-9"	74
*B7	4	#5	STR	17'-6"	73
*S3	270	#5	1	5'-6"	1549
*S4	540	#5	3	1'-10"	1033
*EPOXY COATED REINFORCING STEEL					LBS. 4796
CLASS AA CONCRETE					CU. YDS. 27.5
CONCRETE MEDIAN BARRIER					
BRIDGE DECK				LIN. FT.	270.64
APPROACH SLABS				LIN. FT.	20.7
TOTAL				LIN. FT.	291.34



#5 S4 MAY BE PUSHED INTO GREEN CONCRETE AFTER SCREEDING

NOTES

- THE MEDIAN BARRIER RAILS IN A CONTINUOUS UNIT SHALL NOT BE CAST UNTIL ALL SLAB CONCRETE IN THAT UNIT HAS BEEN CAST AND HAS REACHED MINIMUM COMPRESSIVE STRENGTH OF 3,000 PSI.
- THE JOINT IN THE DECK SHALL BE FORMED PRIOR TO THE CASTING OF MEDIAN BARRIER RAIL.
- ALL REINFORCING STEEL IN MEDIAN BARRIER RAIL SHALL BE EPOXY COATED.
- VERTICAL GROOVED CONTRACTION JOINTS, 1/2" IN DEPTH, SHALL BE TOOLED IN ALL EXPOSED FACES OF THE MEDIAN BARRIER RAIL AND IN ACCORDANCE WITH ARTICLE 825-10(B) OF THE STANDARD SPECIFICATIONS. THE CONTRACTION JOINTS SHALL BE LOCATED AT EACH THIRD POINT BETWEEN MEDIAN BARRIER RAIL EXPANSION JOINTS. ONLY ONE CONTRACTION JOINT IS REQUIRED AT MIDPOINT OF MEDIAN BARRIER SEGMENT LESS THAN 20 FEET IN LENGTH AND NO CONTRACTION JOINTS WILL BE REQUIRED FOR SEGMENTS LESS THAN 10 FEET IN LENGTH.
- FOR MEDIAN BARRIER RAIL ON APPROACH SLABS, SEE APPROACH SLAB SHEETS.
- #5 "S" BARS MAY BE SHIFTED SLIGHTLY IN ORDER TO MAINTAIN A 2" MINIMUM CLEARANCE TO EXPANSION JOINT SEALS AND TO THE 1/2" EXPANSION JOINT MATERIAL IN MEDIAN BARRIER RAIL.
- FOR APPLICATION OF BRIDGE COATING, SEE SPECIAL PROVISIONS.

PROJECT NO. I-3318BB
JOHNSTON COUNTY
 STATION: 24+68.00 -L-

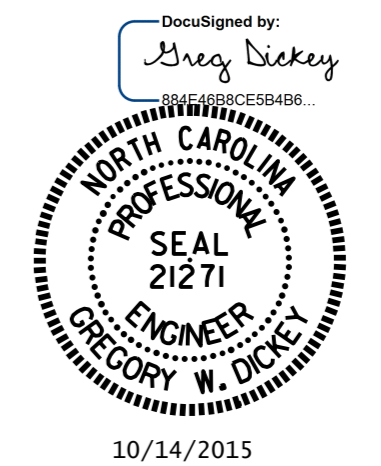
SHEET 2 OF 2

STATE OF NORTH CAROLINA
 DEPARTMENT OF TRANSPORTATION
 RALEIGH

SUPERSTRUCTURE

CONCRETE MEDIAN BARRIER

REVISIONS						SHEET NO.	
NO.	BY:	DATE:	NO.	BY:	DATE:	S-37	
1			3			TOTAL SHEETS	
2			4			78	



DRAWN BY : D. G. ELY DATE : 3/27/15
 CHECKED BY : B. N. BARODAWALA DATE : 5/15
 DESIGN ENGINEER OF RECORD : M. L. RORIE DATE : 8/15