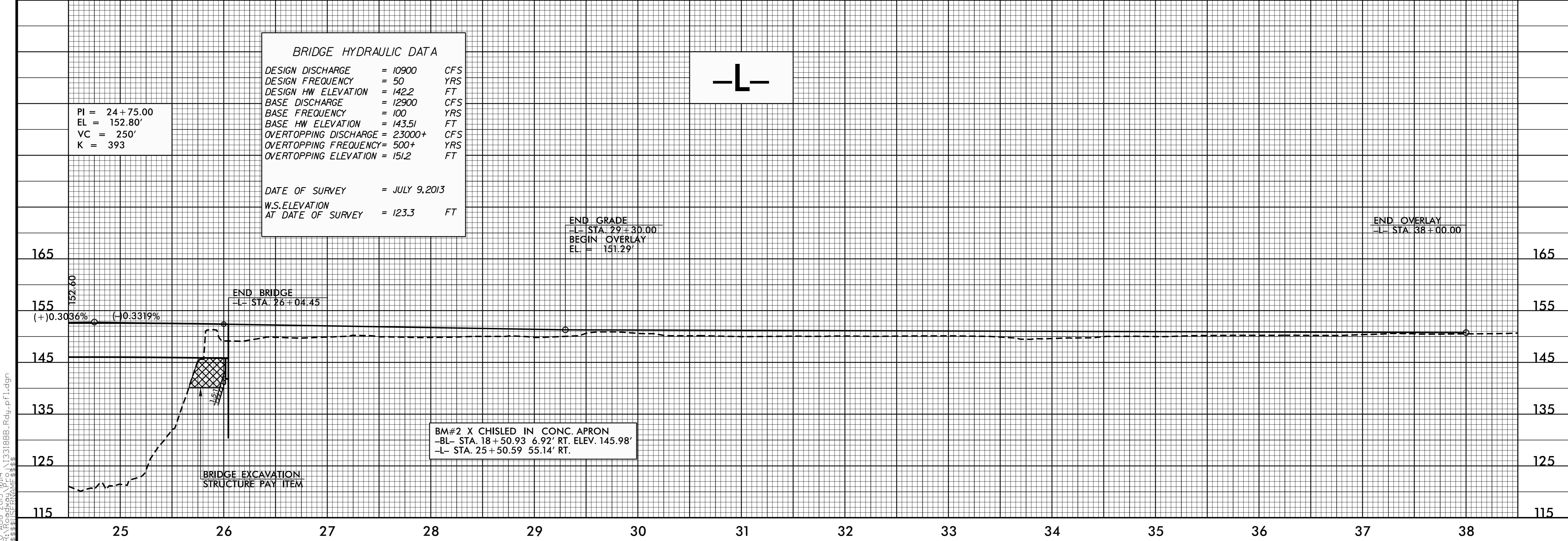


**BRIDGE HYDRAULIC DATA**

DESIGN DISCHARGE	= 10900	CFS
DESIGN FREQUENCY	= 50	YRS
DESIGN HW ELEVATION	= 142.2	FT
BASE DISCHARGE	= 12900	CFS
BASE FREQUENCY	= 100	YRS
BASE HW ELEVATION	= 143.51	FT
OVERTOPPING DISCHARGE	= 23000+	CFS
OVERTOPPING FREQUENCY	= 500+	YRS
OVERTOPPING ELEVATION	= 151.2	FT

DATE OF SURVEY = JULY 9, 2013  
W.S. ELEVATION AT DATE OF SURVEY = 123.3 FT



5/28/99  
10-AUG-2015 16:14 I:\3318BB\_Rdy.plt.dgn