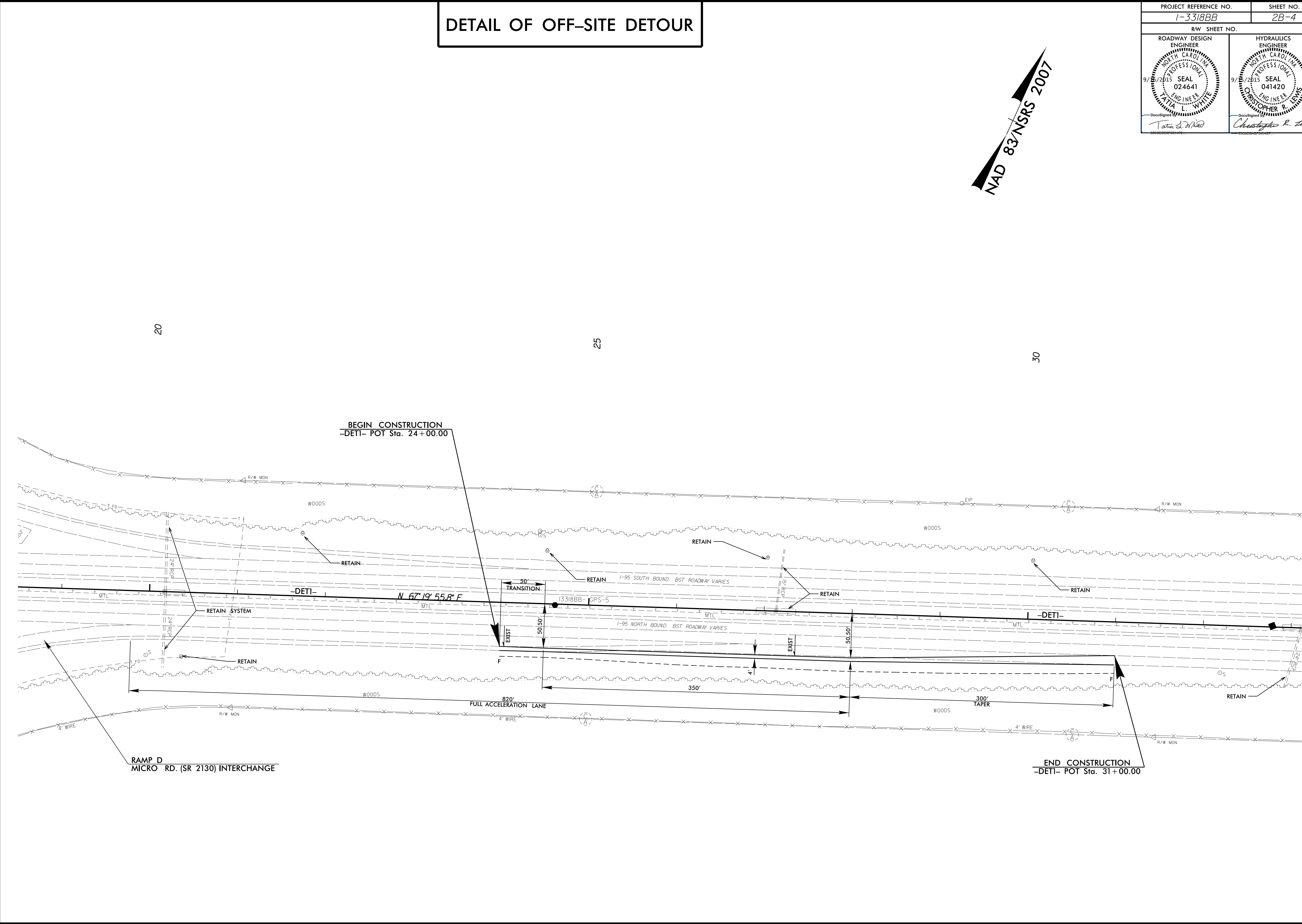


DETAIL OF OFF-SITE DETOUR

| | |
|--|--|
| PROJECT REFERENCE NO. 1-3318BB | SHEET NO. 2B-4 |
| R/W SHEET NO. | |
| ROADWAY DESIGN ENGINEER TATIANA L. WHITE SEAL 024641 9/8/2015 | HYDRAULICS ENGINEER CHRISTOPHER R. LEWIS SEAL 041420 9/8/2015 |
| DocuSigned by Tatiana L. White | DocuSigned by Christopher R. Lewis |

NAD 83/NSRS 2007



20

25

30

BEGIN CONSTRUCTION
-DETI- POT Sta. 24+00.00

RAMP D
MICRO RD. (SR 2130) INTERCHANGE

END CONSTRUCTION
-DETI- POT Sta. 31+00.00

-DETI- N 67°19'55.8" E

50' TRANSITION

EXIST

50.50'

F

EXIST

50.50'

F

820'

FULL ACCELERATION LANE

4" WIRE

R/W MON

4" WIRE

R/W MON

4" WIRE

R/W MON

4" WIRE

R/W MON

4" WIRE

R/W MON

4" WIRE

R/W MON