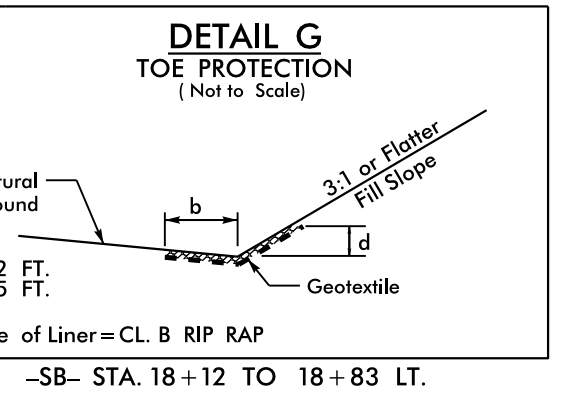
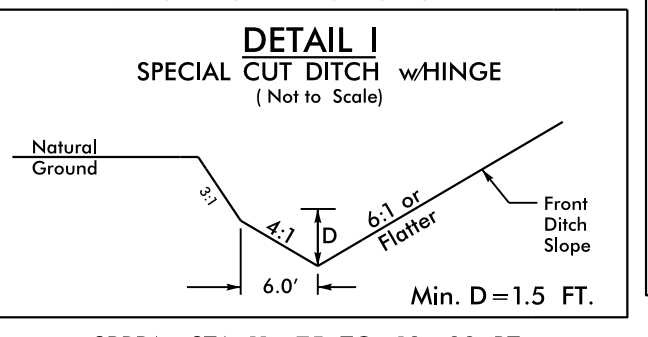
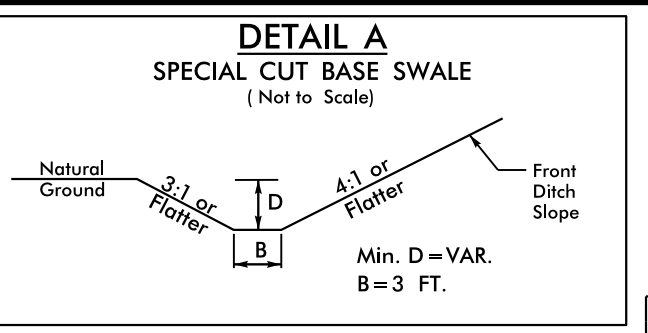
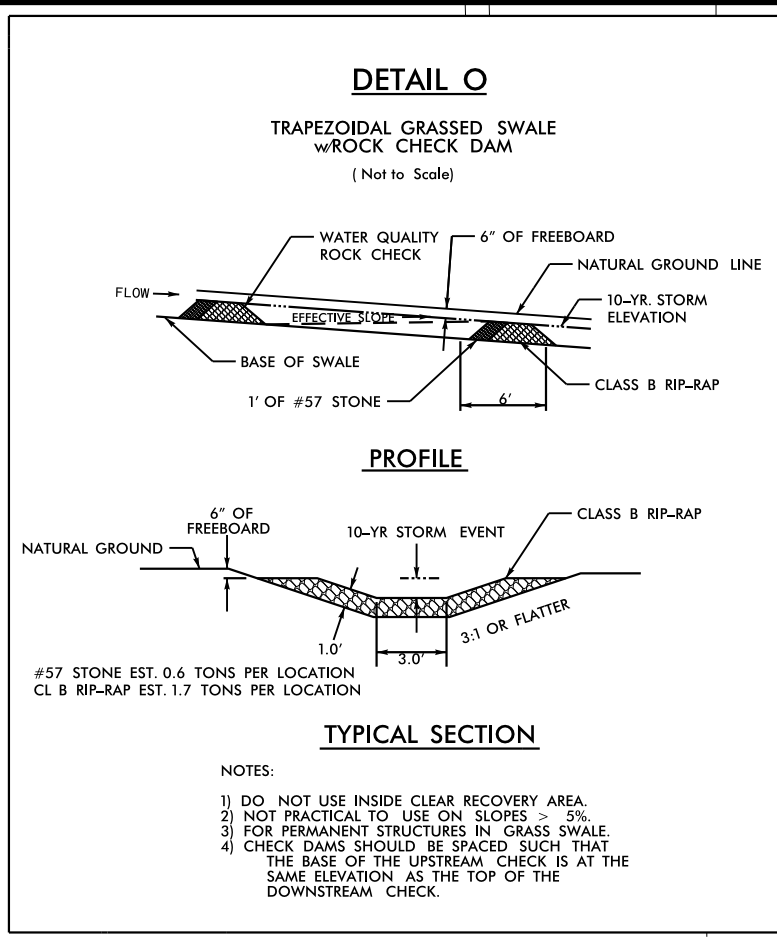


DETAIL OF ON-SITE DETOURS

FINAL DRAINAGE TO BE INSTALLED ON ONSET OF PROJECT DURING CONSTRUCTION OF -Y- AND ONSITE DETOURS. ALL DRAINAGE STRUCTURES ARE TO BE RETAINED IN FINAL CONDITION UNLESS OTHERWISE NOTED.

PROJECT REFERENCE NO. 1-3318BB	SHEET NO. 2B-2
RW SHEET NO.	
ROADWAY DESIGN ENGINEER CAROL J. WHITE PROFESSIONAL SEAL 024641	HYDRAULICS ENGINEER CHRISTOPHER R. LEWIS PROFESSIONAL SEAL 041420



PI Sta 12+06.06
 $\Delta = 7' 15" 08.1" (RT)$
 $D = 2' 17" 30.6"$
 $L = 316.44'$
 $T = 158.43'$
 $R = 2,500.00'$
 SE = SEE PLANS
 RO = SEE PLANS

PI Sta 28+04.78
 $\Delta = 6' 28" 49.0" (RT)$
 $D = 2' 17" 30.6"$
 $L = 282.76'$
 $T = 141.53'$
 $R = 2,500.00'$
 SE = SEE PLANS
 RO = SEE PLANS

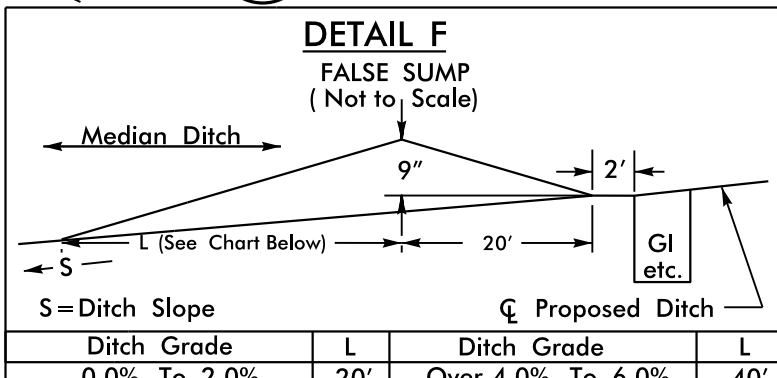
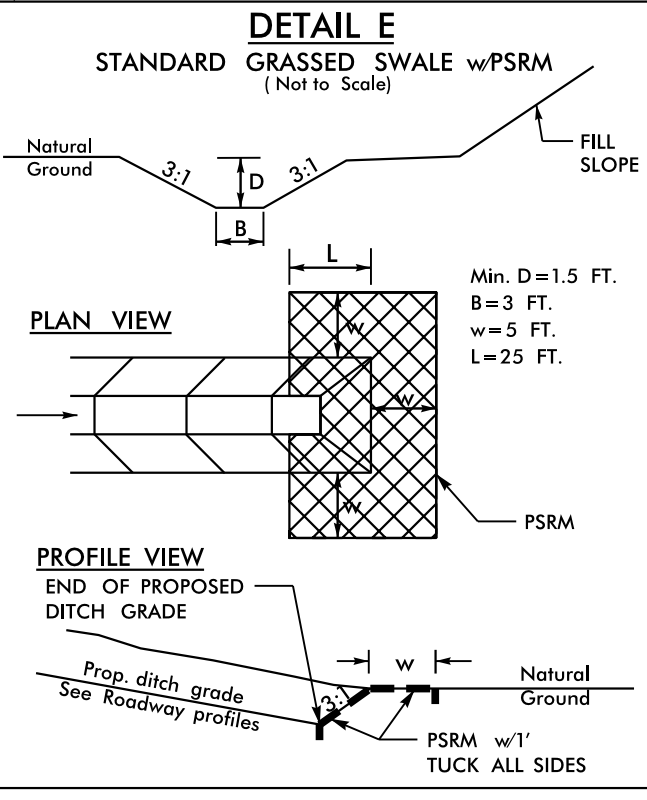
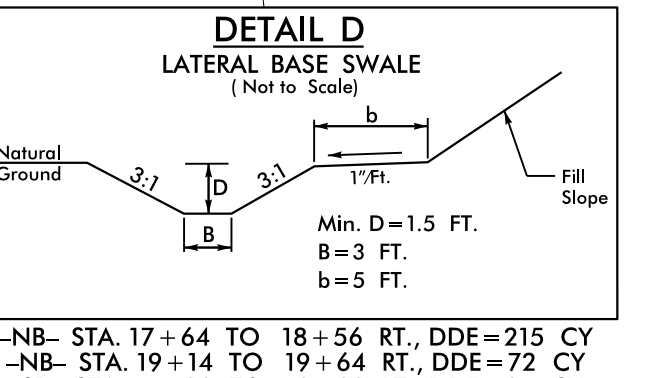
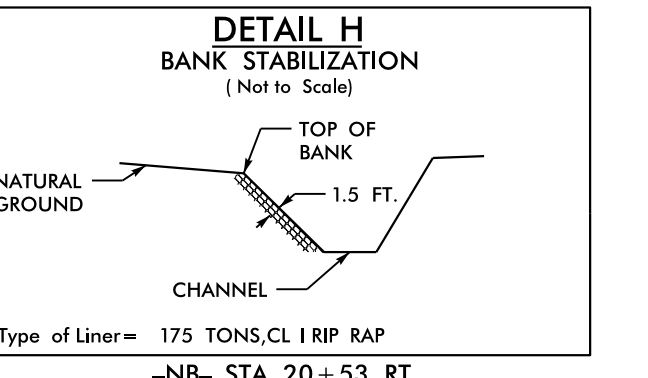
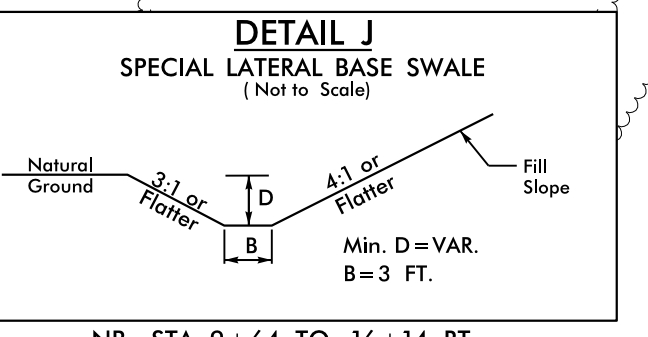
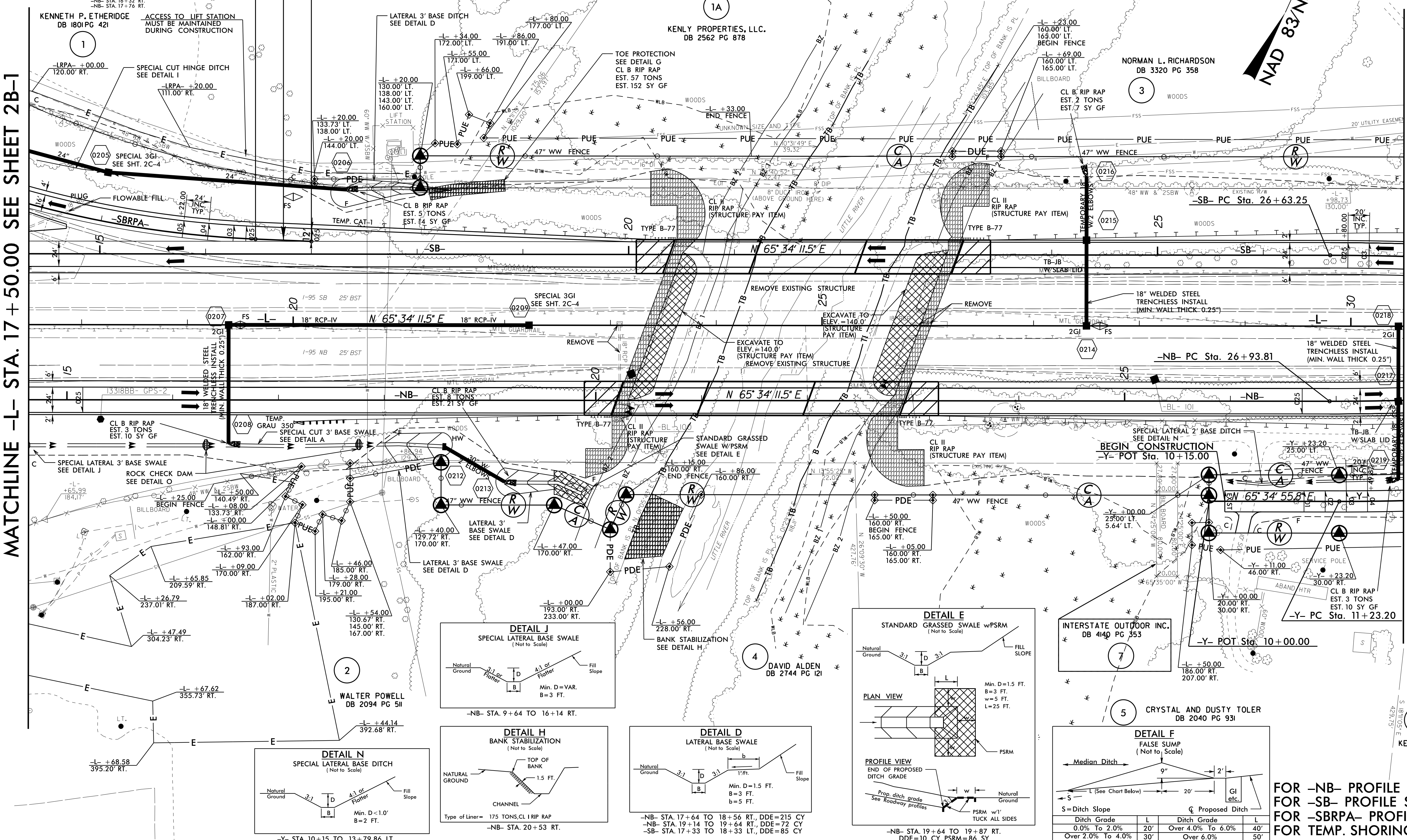
PI Sta 12+59.97
 $\Delta = 7' 36" 24.2" (LT)$
 $D = 2' 17" 30.6"$
 $L = 331.91'$
 $T = 166.20'$
 $R = 2,500.00'$
 SE = SEE PLANS
 RO = SEE PLANS

PI Sta 28+76.66
 $\Delta = 8' 21" 57.6" (LT)$
 $D = 2' 17" 30.6"$
 $L = 365.04'$
 $T = 182.84'$
 $R = 2,500.00'$
 SE = SEE PLANS
 RO = SEE PLANS

PI Sta 13+14.89
 $\Delta = 30' 32" 01.4" (RT)$
 $D = 5' 58" 05.9"$
 $L = 511.60'$
 $T = 262.03'$
 $R = 960.00'$
 SE = SEE PLANS
 RO = 192.00'

PI Sta 13+32.23
 $\Delta = 10' 23" 09.4" (LT)$
 $D = 2' 29" 28.0"$
 $L = 416.92'$
 $T = 209.03'$
 $R = 2,300.00'$

TEMPORARY DECK DRAINS REQUIRED
 6" DIAMETER DRAINS ON 10' CENTERS
 FROM -L- STA 23+69 TO STA 24+29 LT.
 FROM -L- STA 25+18 TO STA 26+28 LT.
 FROM -L- STA 23+07 TO STA 24+27 RT.
 FROM -L- STA 25+17 TO STA 26+27 RT.
 DRAINS TO BE FILLED IN UPON COMPLETION OF CONSTRUCTION.



Ditch Grade	L	Ditch Grade	L
0.0% To 2.0%	20'	Over 4.0% To 6.0%	40'
Over 2.0% To 4.0%	30'	Over 6.0%	50'

FOR -NB- PROFILE SEE SHEET 9 & 10
 FOR -SB- PROFILE SEE SHEET 10 & 11
 FOR -SBRPA- PROFILE SEE SHEET 11
 FOR TEMP. SHORING SEE SHEET 2B-6

NAD 83 NSRS 2007

MATCHLINE -L- STA. 30 + 50.00 SEE SHEET 2B-3

MATCHLINE -L- STA. 17 + 50.00 SEE SHEET 2B-1