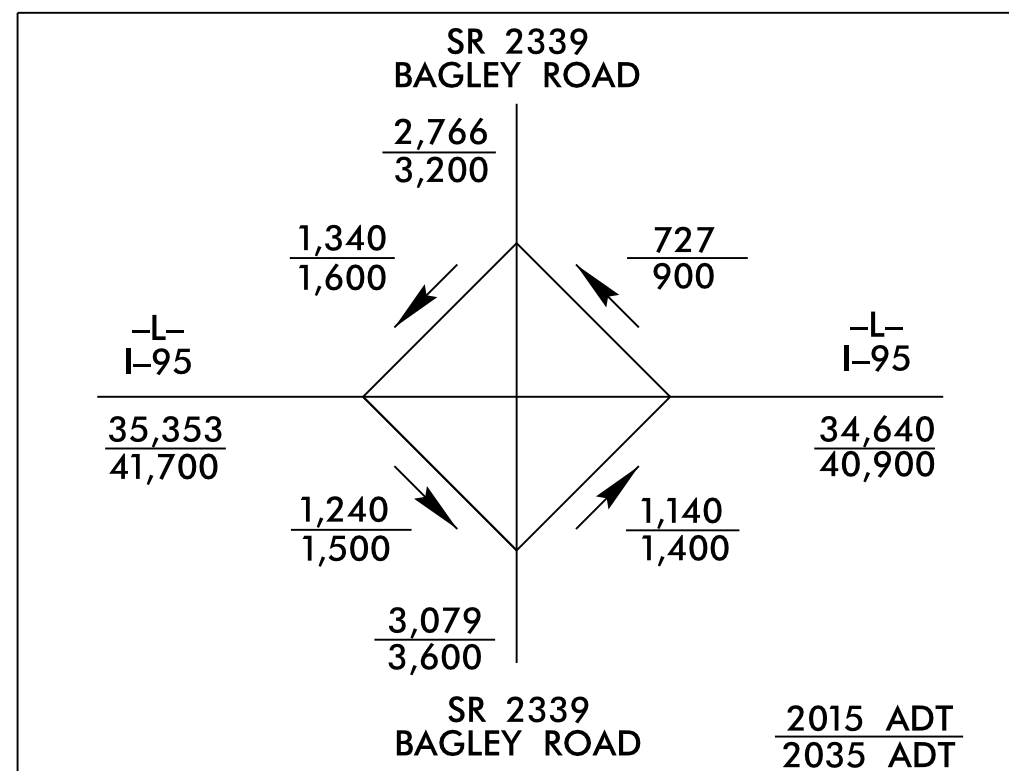
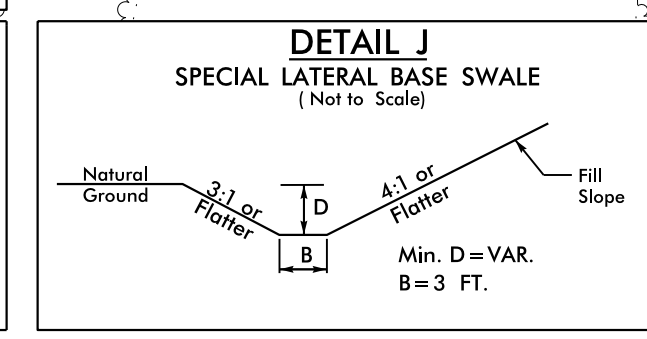
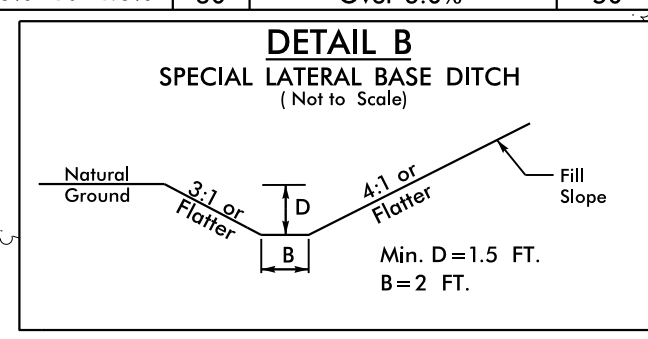
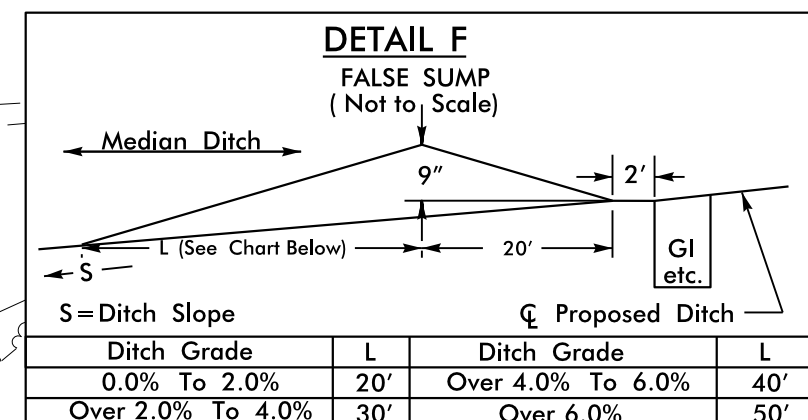
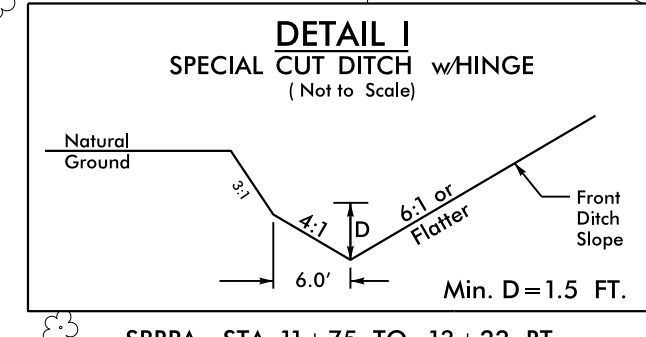
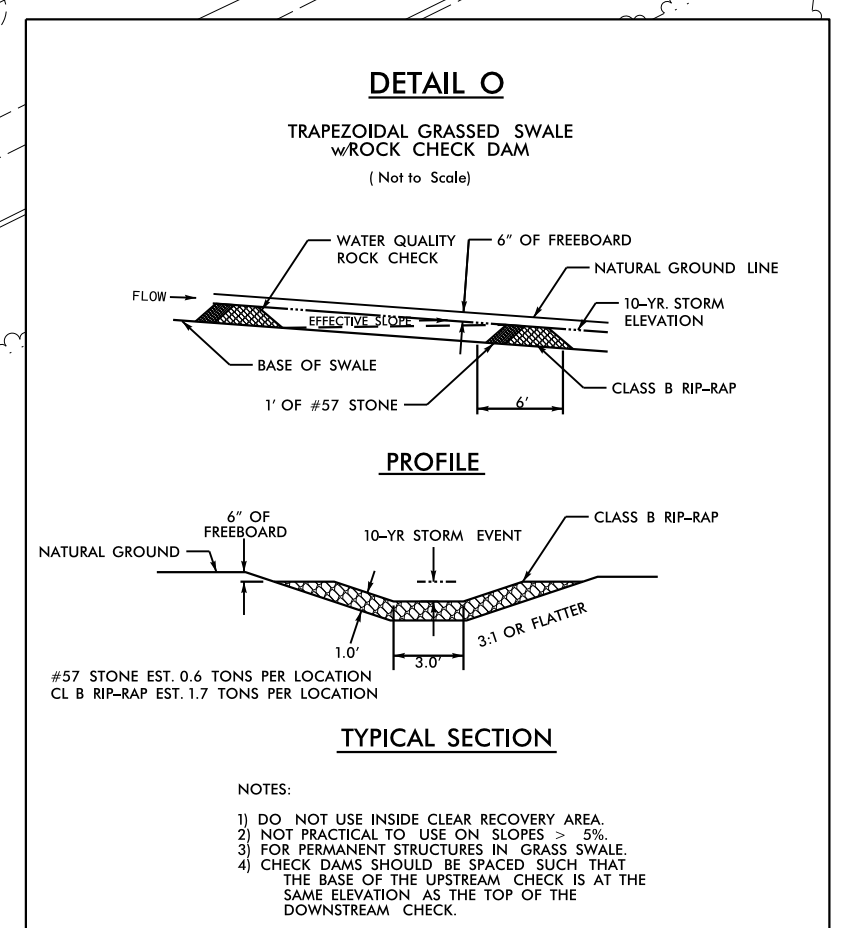


DETAIL OF ON-SITE DETOURS

PROJECT REFERENCE NO. 1-3318BB	SHEET NO. 2B-1
RW SHEET NO.	
ROADWAY DESIGN ENGINEER TATIANA L. WHITE SEAL 024641	HYDRAULICS ENGINEER CHRISTOPHER R. LEMUS SEAL 041420



-SB-		-NB-	
PI Sta 8+89.62	PI Sta 12+06.06	PI Sta 13+14.89	PI Sta 9+28.06
$\Delta = 7' 15'' 08.1''$ (LT)	$\Delta = 7' 15'' 08.1''$ (RT)	$\Delta = 30' 32'' 01.4''$ (RT)	$\Delta = 7' 36'' 24.2''$ (RT)
$D = 2' 17'' 30.6''$	$D = 2' 17'' 30.6''$	$D = 5' 58'' 05.9''$	$D = 2' 17'' 30.6''$
$L = 316.44'$	$L = 316.44'$	$L = 511.60'$	$L = 331.91'$
$T = 158.43'$	$T = 158.43'$	$T = 262.03'$	$T = 166.20'$
$R = 2,500.00'$	$R = 2,500.00'$	$R = 960.00'$	$R = 2,500.00'$
SE = SEE PLANS	SE = SEE PLANS	SE = SEE PLANS	SE = SEE PLANS
RO = SEE PLANS	RO = SEE PLANS	RO = 192.00'	RO = SEE PLANS



FINAL DRAINAGE TO BE INSTALLED AT ONSET OF PROJECT DURING CONSTRUCTION OF -Y- AND ONSITE DETOURS. ALL DRAINAGE STRUCTURES ARE TO BE RETAINED IN FINAL CONDITION UNLESS OTHERWISE NOTED.

NAD 83/NSRS 2007

MATCHLINE -L- STA. 17 + 50.00 SEE SHEET 2B-2

FOR -NB- PROFILE SEE SHEET 9
FOR -SB- PROFILE SEE SHEET 10
FOR -SBRPA- PROFILE SEE SHEET 11

8/17/09
21-AUG-2015 08:35 13318BB-Rdy-tyr-2B-1.dgn
3:58:50 PM