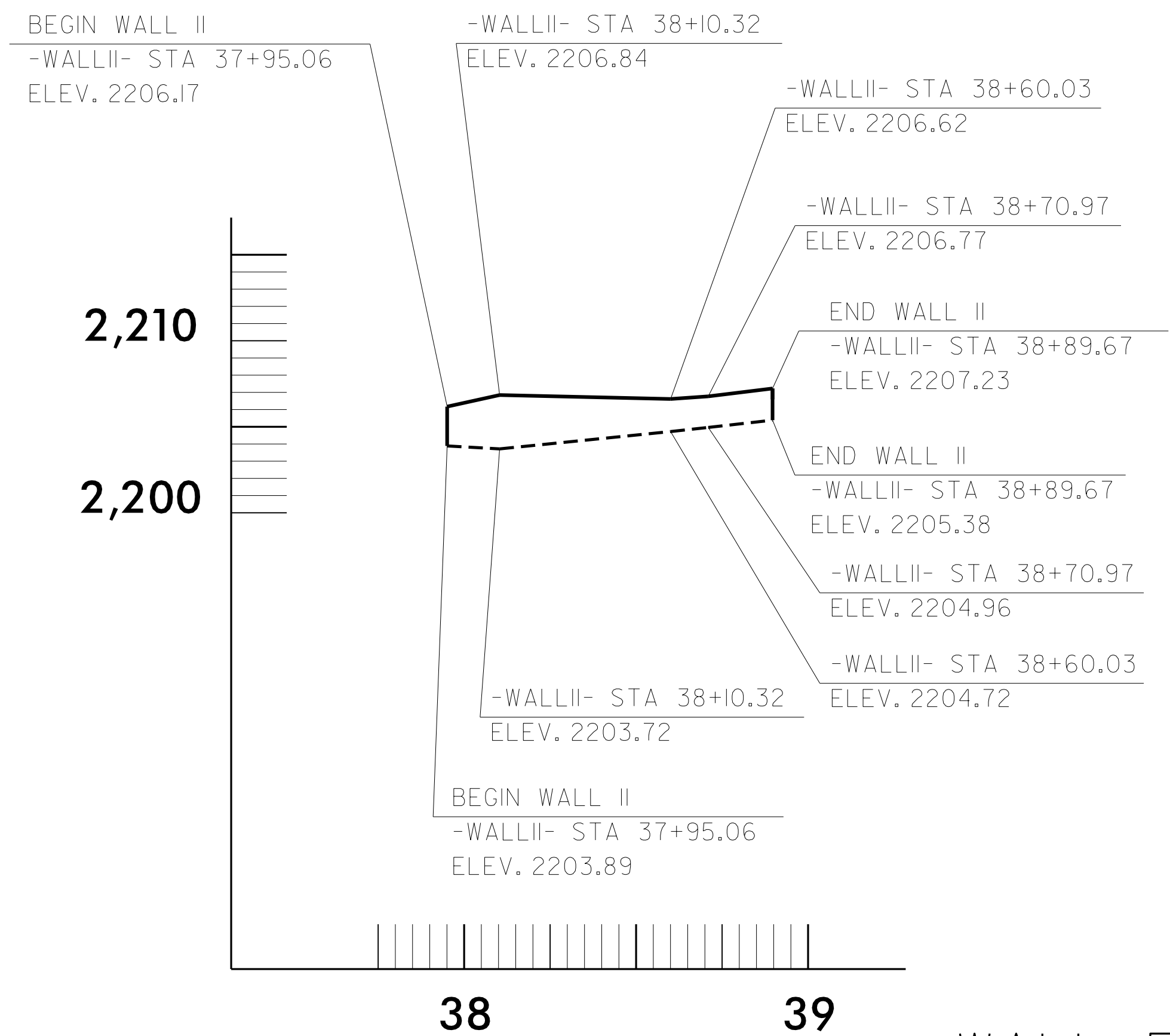


LOCATION SKETCH



WALL ENEVELOPE

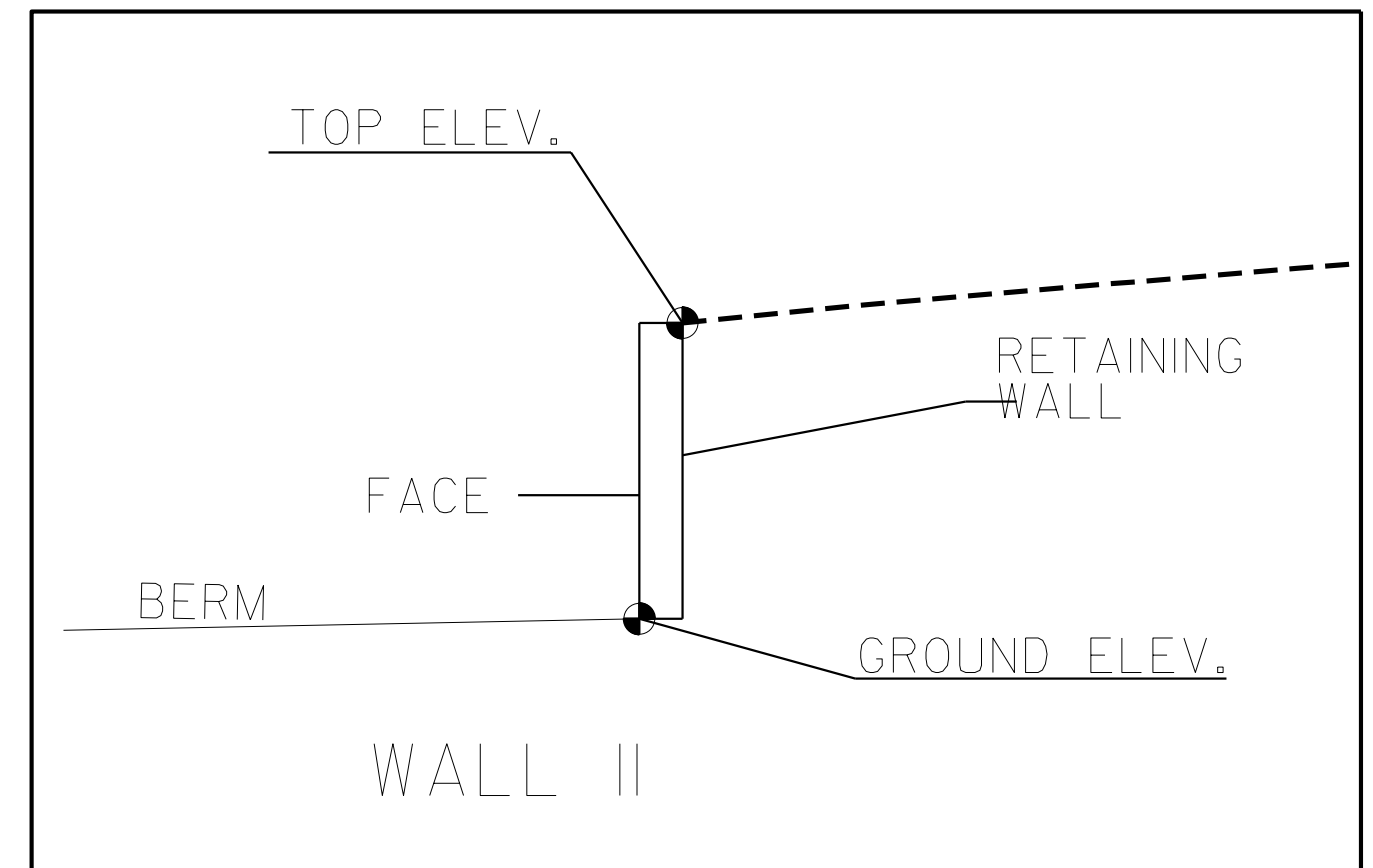
GEOTECHNICAL ENGINEER

ENGINEER

SEAL 29869

8/21/2015

SIGNATURE DATE SIGNATURE DATE



ESTIMATED WALL QUANTITY

RETAINING WALL NO.	CAST-IN-PLACE GRAVITY RETAINING WALL (SQ. FEET)
11	225

PROJECT NO.: U-5104

TRANSYLVANIA COUNTY

STATION: 37+95.06 -L- TO 38+79.80 -L-

SHEET 9 OF 10

NORTH CAROLINA DEPARTMENT OF TRANSPORTATION DIVISION OF HIGHWAYS

GEOTECHNICAL ENGINEERING UNIT

CAST IN PLACE (CIP) GRAVITY RETAINING WALL #11

REVISIONS					
NO.	BY	DATE	NO.	BY	DATE
1			3		
2			4		

SHEET NO. W-18

PREPARED BY: EJS DATE: 7/15

REVIEWED BY: SCC DATE: 7/15