

GEOTECHNICAL ENGINEER

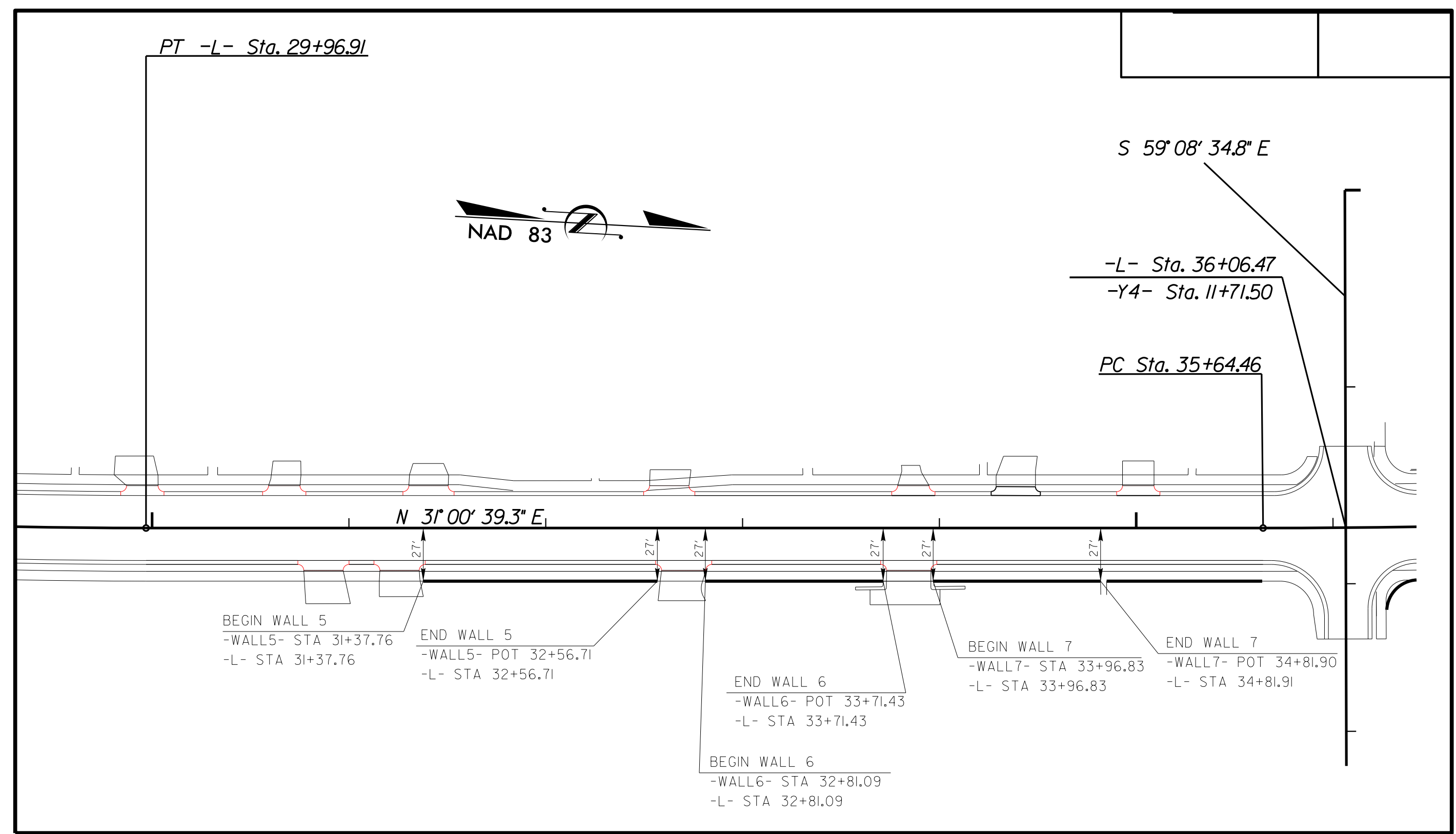
ENGINEER

SEAL 29869

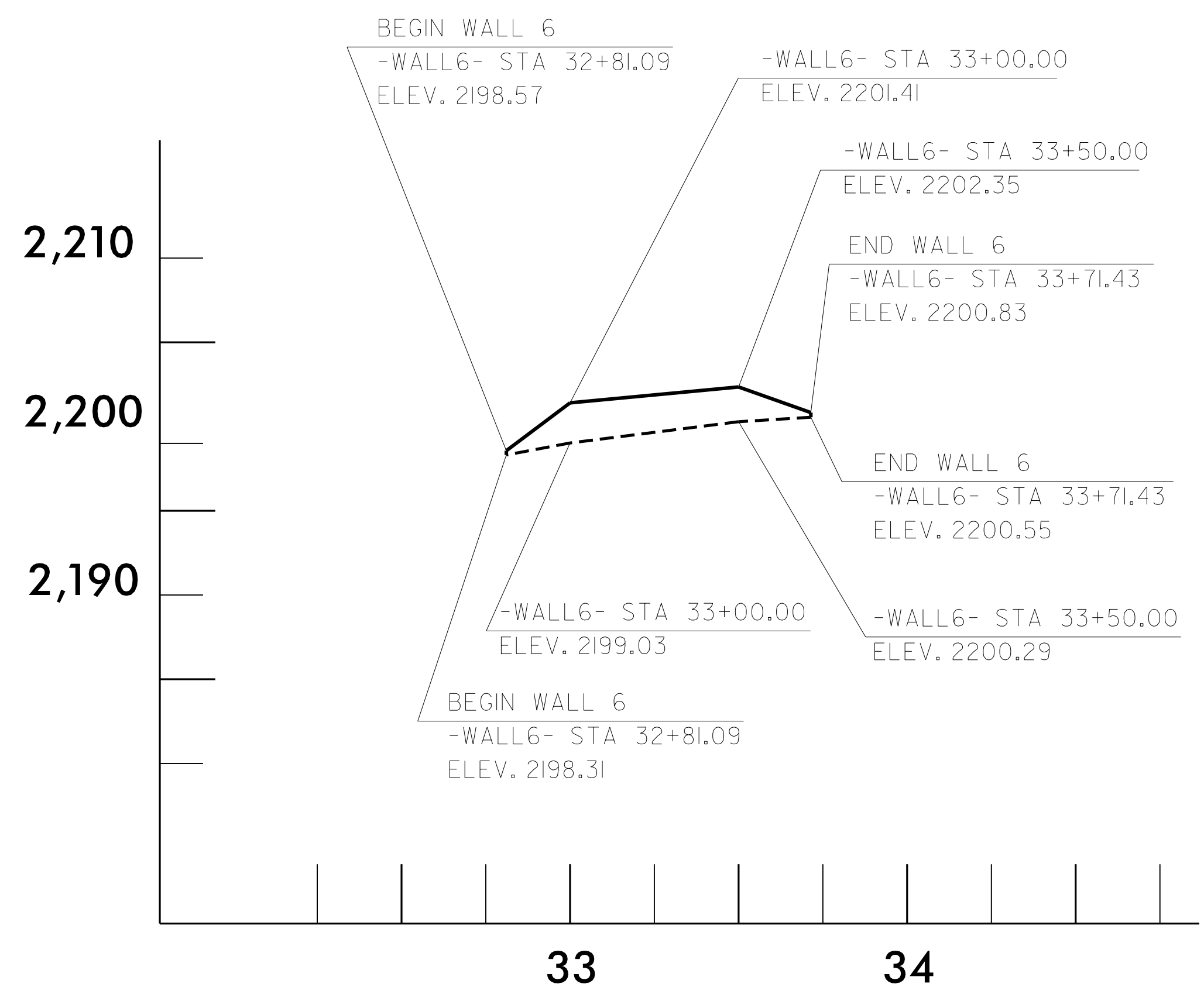
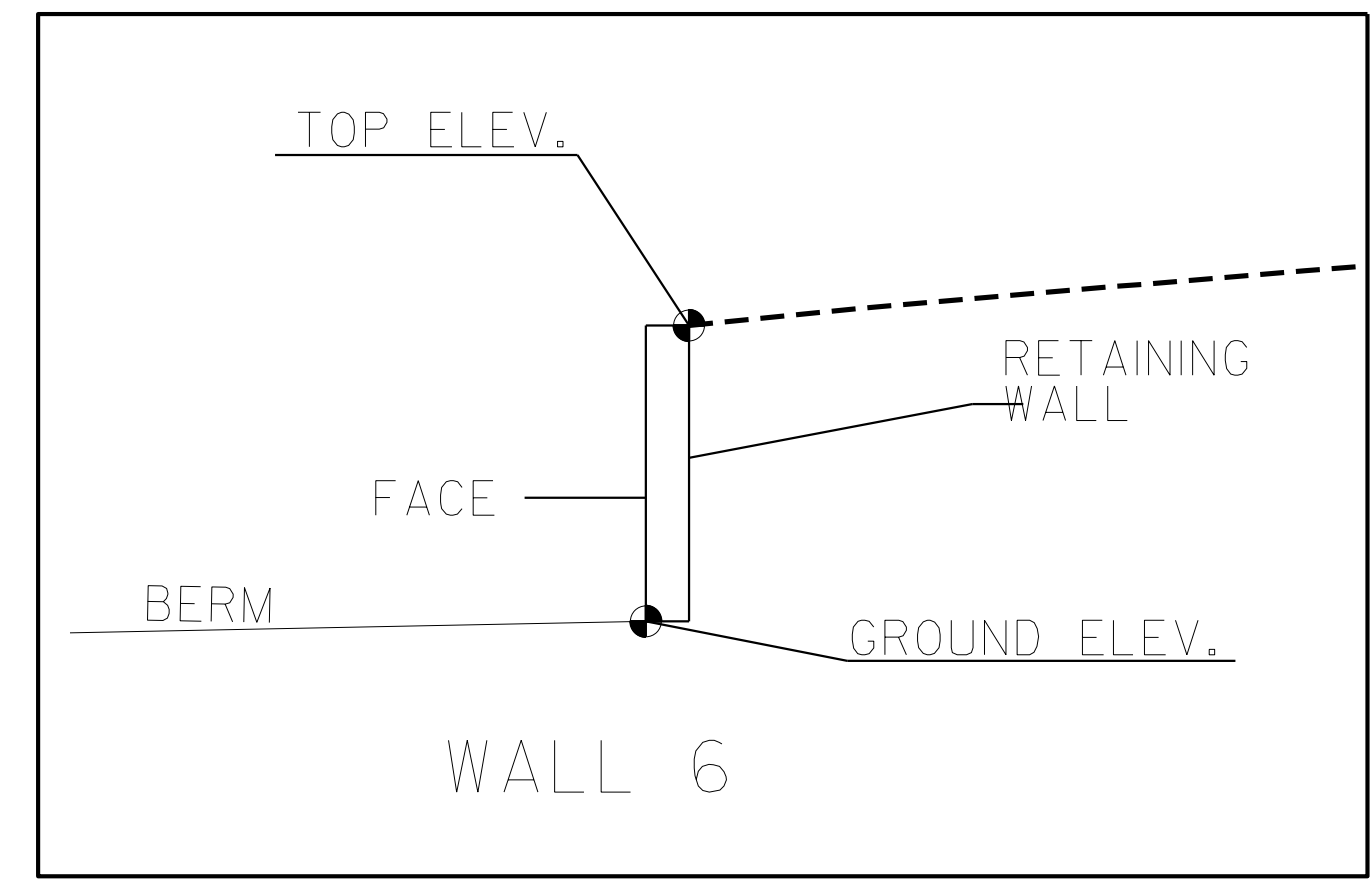
Shane C. Clark

8/21/2015

SIGNATURE DATE SIGNATURE DATE



LOCATION SKETCH



WALL ENEVELOPE

ESTIMATED WALL QUANTITY

RETAINING WALL NO.	CAST-IN-PLACE GRAVITY RETAINING WALL (SQUARE FEET)
6	165

PROJECT NO.: U-5104

TRANSYLVANIA COUNTY

STATION: 32+81.09 -L- TO 33+71.43 -L-

SHEET 4 OF 10

NORTH CAROLINA DEPARTMENT OF TRANSPORTATION DIVISION OF HIGHWAYS

GEOTECHNICAL ENGINEERING UNIT

CAST IN PLACE (CIP) GRAVITY RETAINING WALL #6

REVISIONS					
NO.	BY	DATE	NO.	BY	DATE
1			3		
2			4		

SHEET NO. W-13

PREPARED BY: EJS DATE: 7/15

REVIEWED BY: SCC DATE: 7/15