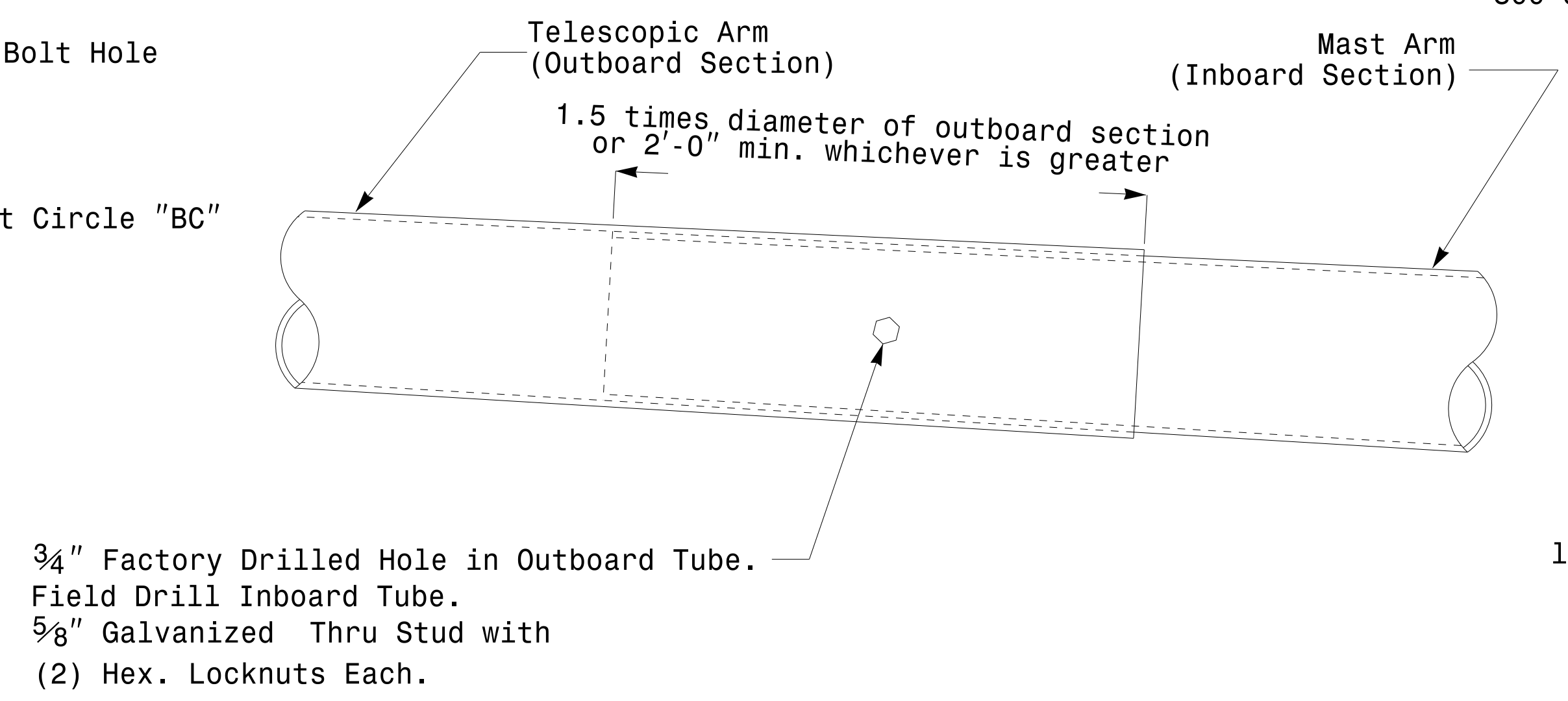
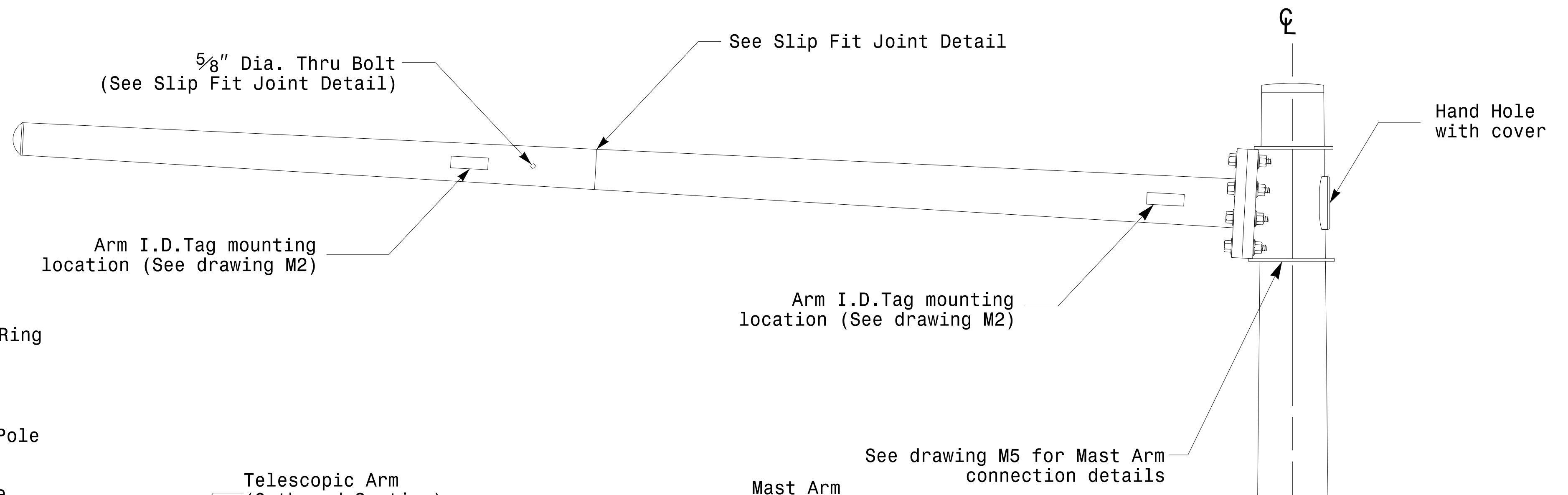
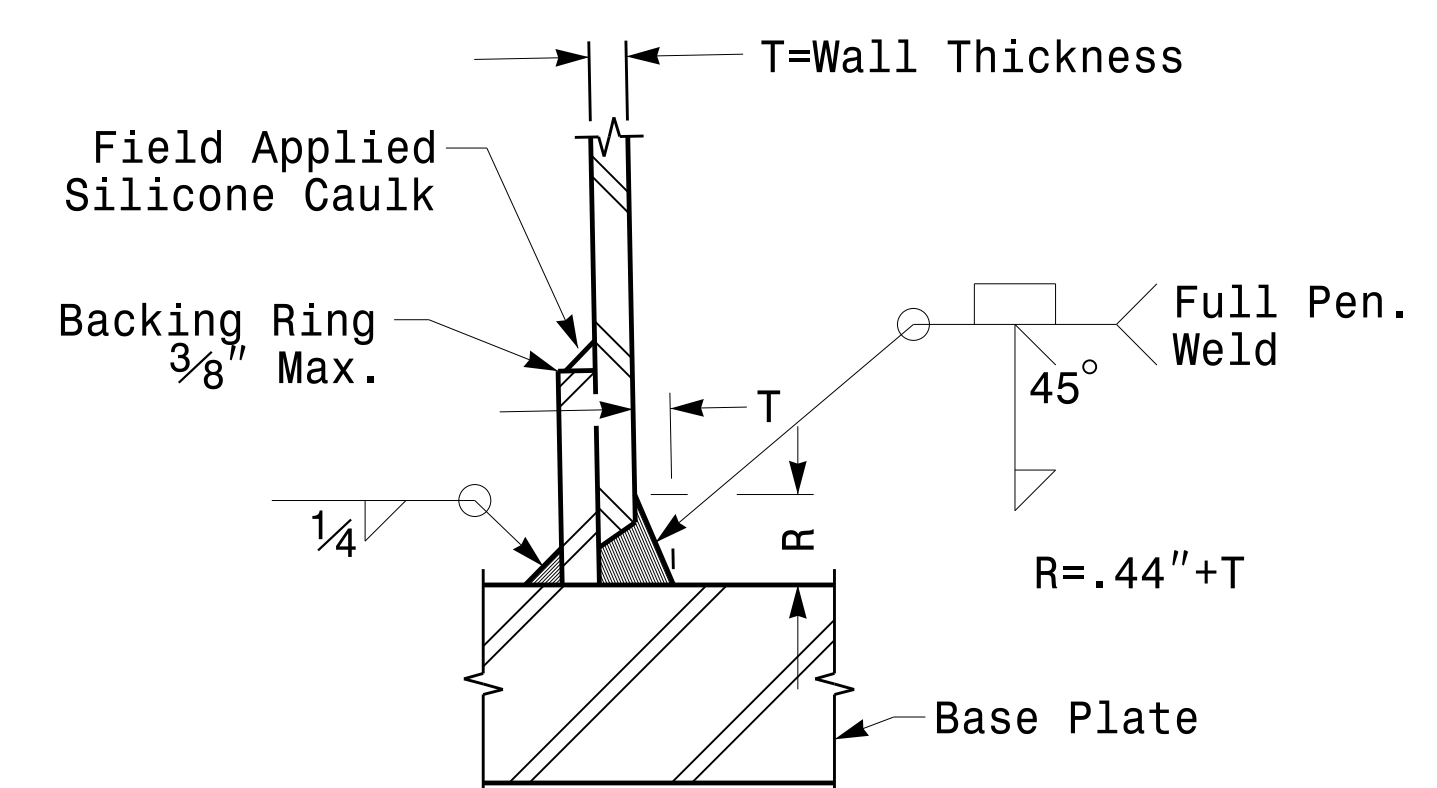


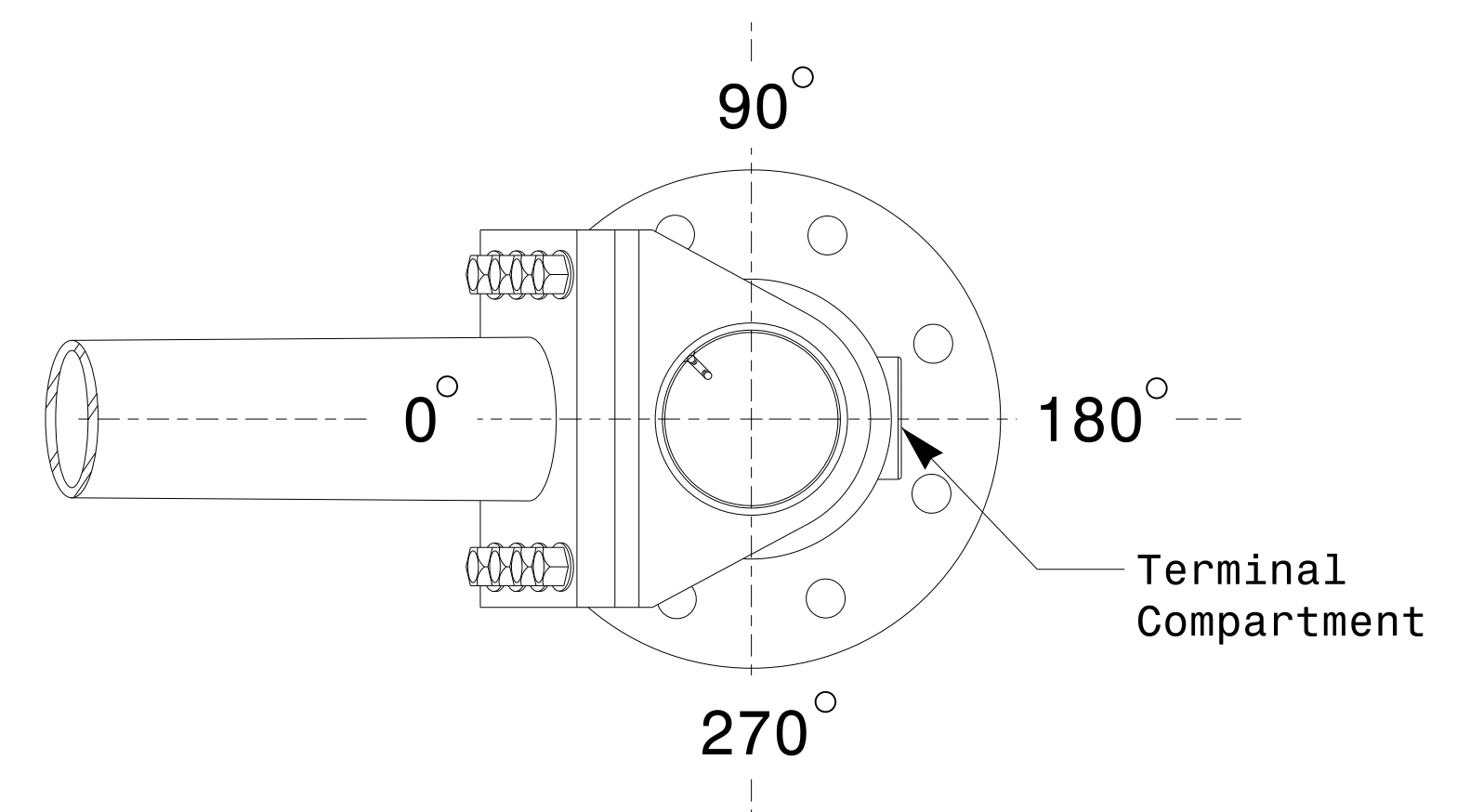
Section A-A
(See drawing M 2)
Pole Base Plate



Slip Fit Joint Detail for Mast Arm



Section B-B
(Pole Attachment to Base Plate)
Full-Penetration Groove Weld Detail



Mast Arm Radial Orientation

Shaft I.D.Tag mounting location (See drawing M2)
Terminal Compartment (See drawing M2)

Monotube Mast Arm Pole
(.14in./ft. taper)

| | | | |
|------------------|---|---|---------------------|
| | Typical Fabrication Details for Mast Arm Poles | | |
| | PLAN DATE: AUGUST 2013 PREPARED BY: N. BITTING | DESIGNED BY: C.F. ANDREWS REVIEWED BY: D.C. SARKAR | |
| SCALE: 0 NA NONE | REVISIONS: | INIT. DATE: | SIG. INVENTORY NO.: |

26-AUG-2014 08:50
 S:\PROJECTS\115\SIGNAL\Signal Design\Section\Eastern Region\M4_Fab_Details\MastArms.dgn
 J:\JL\115\115011002

Fabrication Details – Mast Arm Poles