

Terminal Compartment Detail

MFG _____	MFG. DATE: MM/YY
SHAFT D/T/L/Y	-----/-----/-----
ARM-A D/T/L/Y	-----/-----/-----
ARM-B D/T/L/Y	-----/-----/-----
A.B. DIA./B.C./L/Y	-----/-----/-----
NCDOT STANDARD	-----

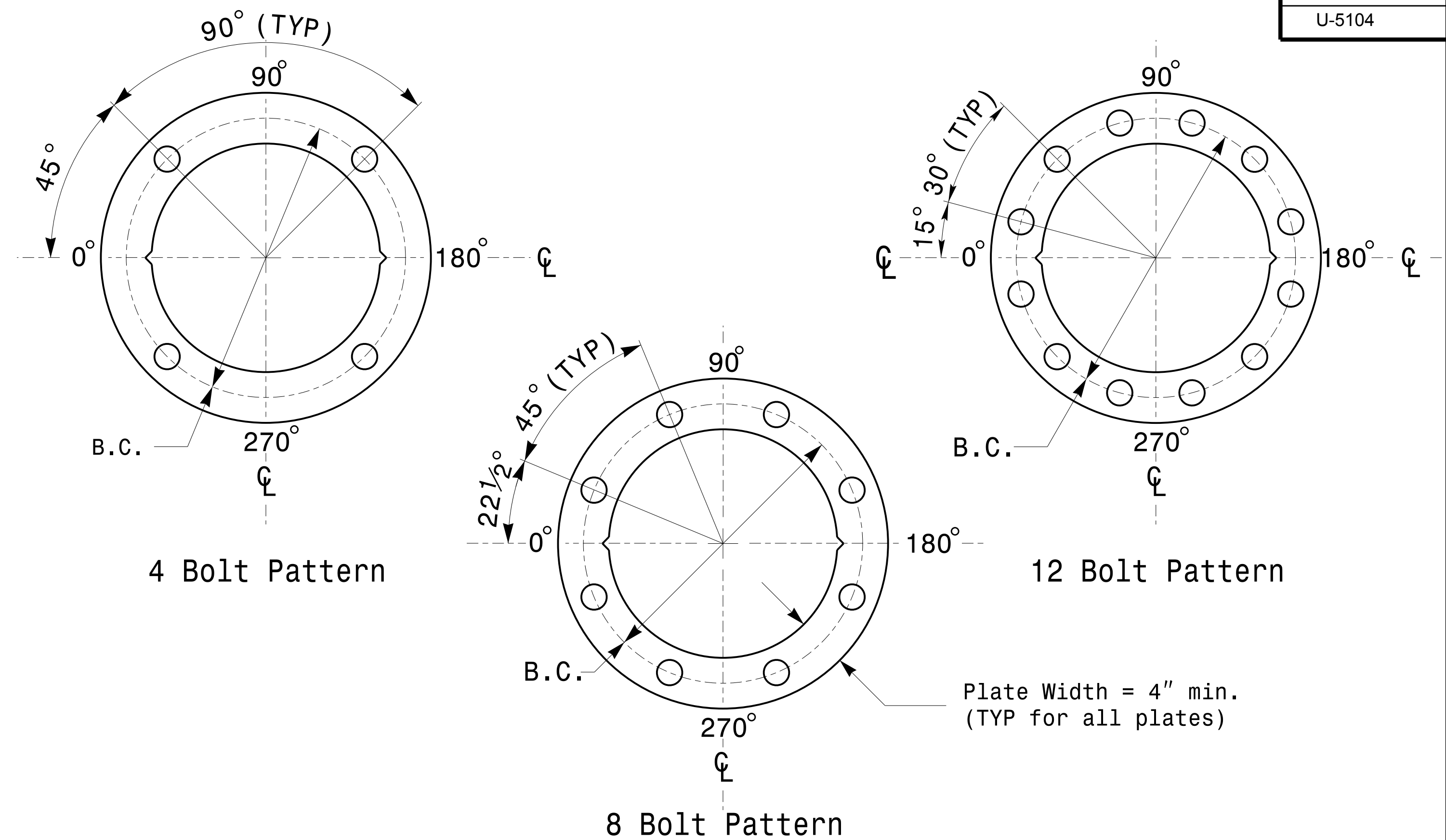
Shaft I.D. Tag
(Provide on Strain Poles and Mast Arm Poles)

MFG _____	MFG. DATE: MM/YY
SECTION D/T/L/Y	-----/-----/-----
NCDOT STANDARD	-----

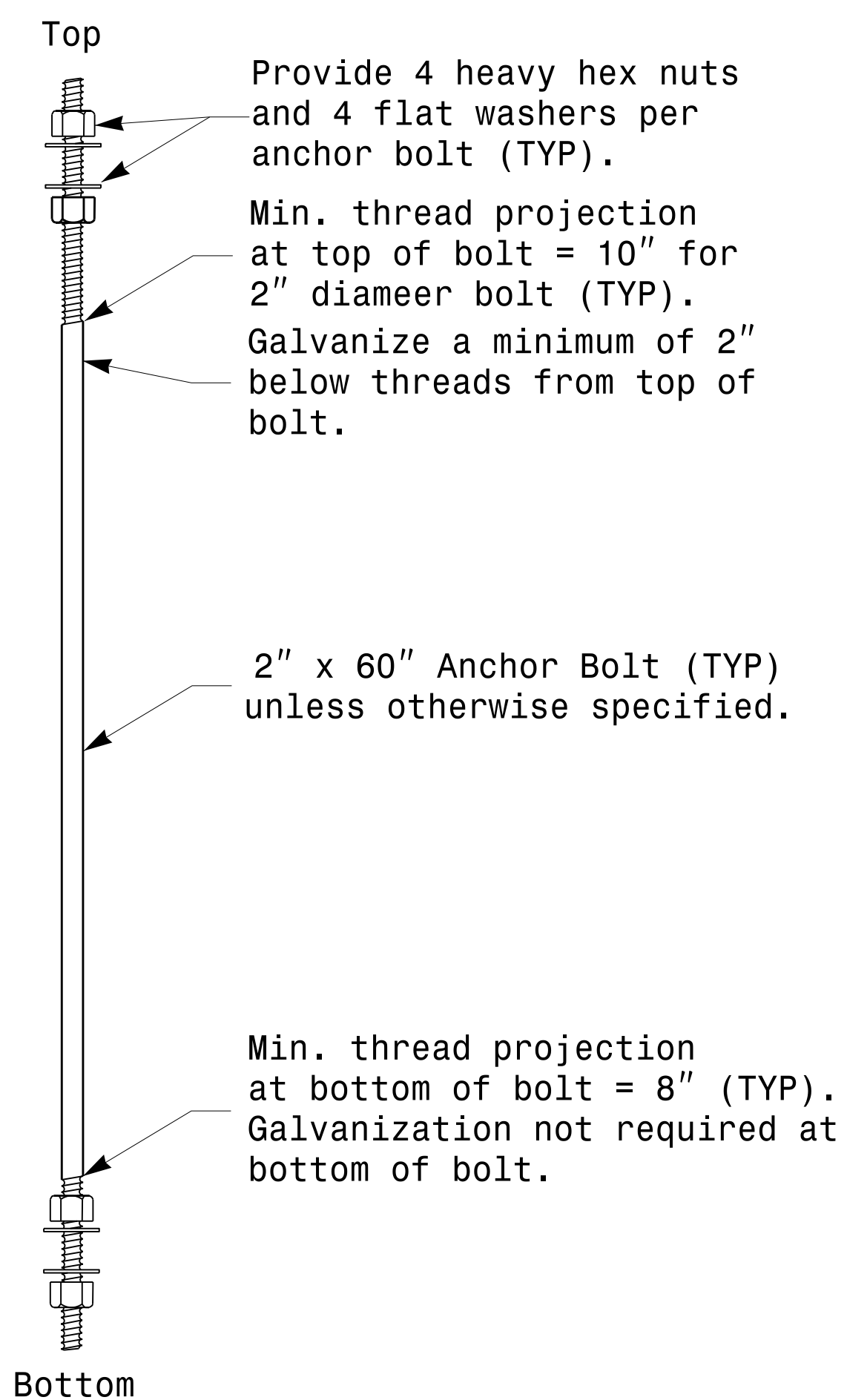
Arm I.D. Tag
(Provide on each section of a multi-section mast arm)

- Notes:
- 1) D= Diameter, T= Thickness, L= Length, Y= Yield Strength
 - 2) A.B. = Anchor Bolt
 - 3) B.C. = Bolt Circle of Anchor Bolts
 - 4) If Custom Design, use "NCDOT STANDARD" line for pole I.D. number and Signal Inv. Number.
 - 5) See drawing M4 for mounting positions of I.D. tags.

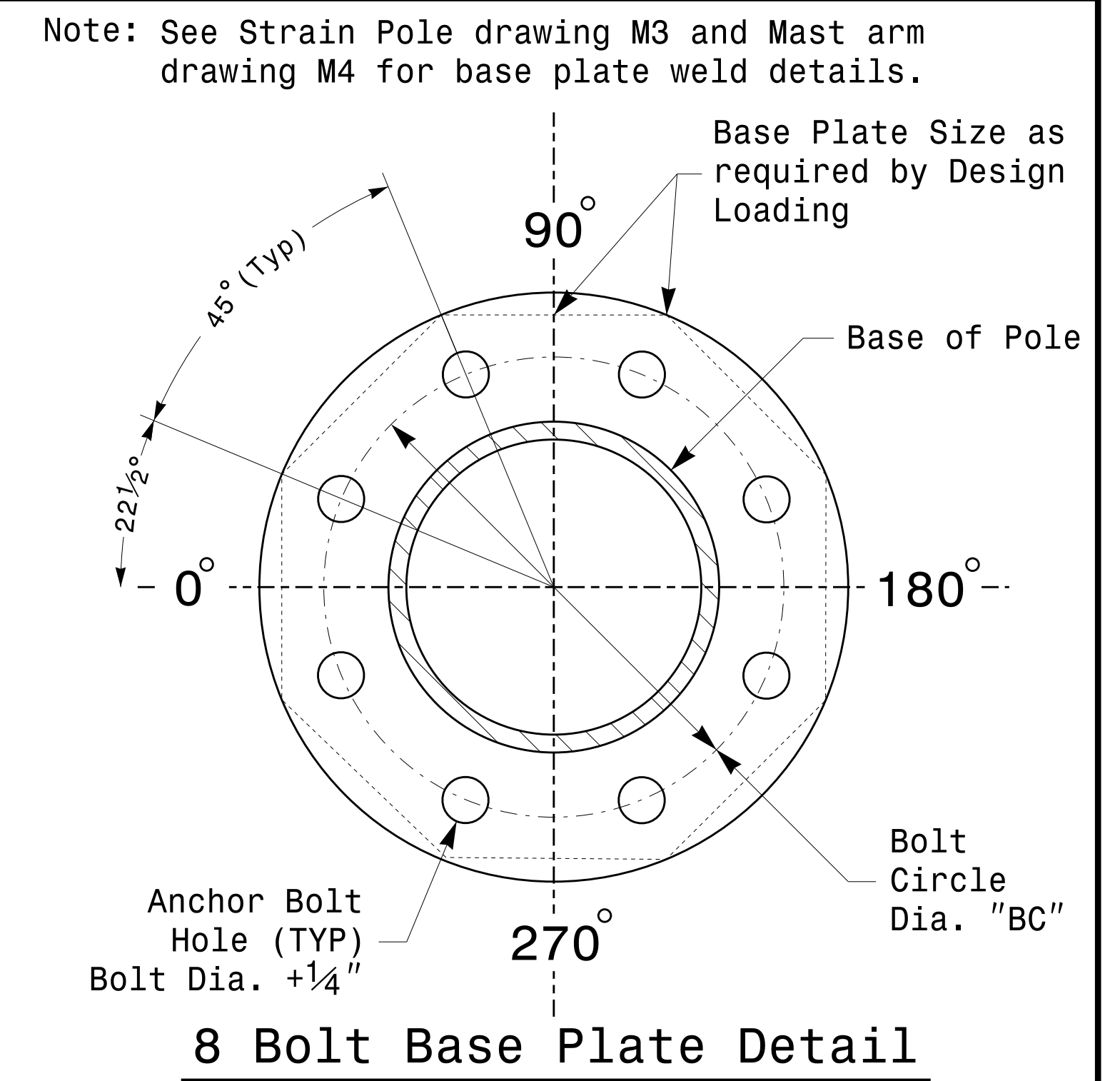
Identification Tag Details



Construct Templates and Plates from 1/4" min. thick Steel. Galvanizing is not required.
Base Plate Template and Anchor Bolt Lock Plate Details



Anchor Bolt Detail



8 Bolt Base Plate Detail

	Typical Fabrication Details Common To All Metal Poles		
	PLAN DATE: AUGUST 2013 PREPARED BY: N. BITTING	DESIGNED BY: C.F. ANDREWS REVIEWED BY: D.C. SARKAR	
SCALE: NONE	REVISIONS:	INIT. DATE:	DocuSign by: Dinesh C. Sarkar 8/26/2014 DATE:

Fabrication Details – All Poles

06-AUG-2014 08:55
 S:\IT\5451\115_Signal\Signal Design Section\Eastern Region\M2_Fab_Details All Poles.dgn
 Top | Lowy