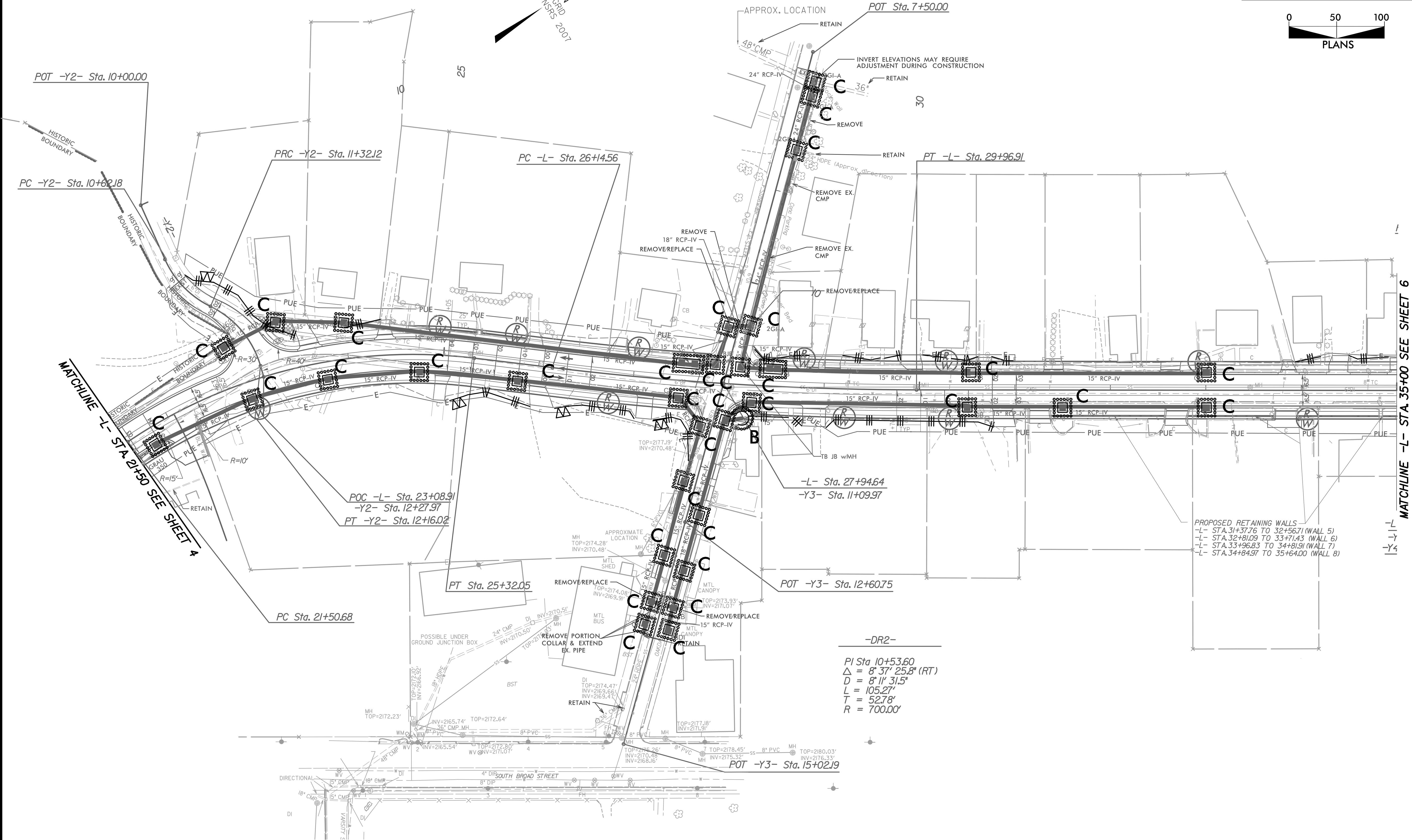
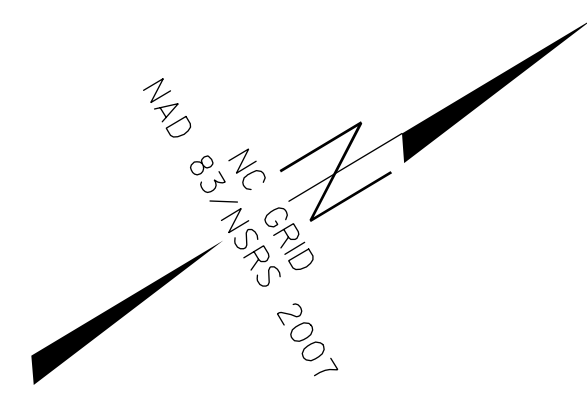
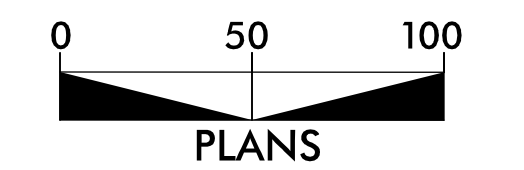


PROJECT REFERENCE NO. <b>U-5104</b>	SHEET NO. <b>EC-7/CONST.5</b>
RW SHEET NO.	
ROADWAY DESIGN ENGINEER	HYDRAULICS ENGINEER

FINAL GRADE  
EROSION CONTROL FOR  
CONSTRUCTION SHEET 5

-L-  
 PI Sta 23+49.94      PI Sta 28+05.97  
 $\Delta = 40' 59" 46.8" (RT)$      $\Delta = 6' 50" 45.5" (LT)$   
 $D = 10' 44" 58.8"$        $D = 1' 47" 25.8"$   
 $L = 381.37'$                $L = 382.35'$   
 $T = 199.26'$                $T = 191.40'$   
 $R = 533.00'$                $R = 3,200.00'$



PROPOSED RETAINING WALLS  
 -L- STA. 31+37.76 TO 32+56.71 (WALL 5)  
 -L- STA. 32+81.09 TO 33+71.43 (WALL 6)  
 -L- STA. 33+96.83 TO 34+81.91 (WALL 7)  
 -L- STA. 34+84.97 TO 35+64.00 (WALL 8)

-DR2-  
 PI Sta 10+53.60  
 $\Delta = 8' 37" 25.8" (RT)$   
 $D = 8' 11" 31.5"$   
 $L = 105.27'$   
 $T = 52.78'$   
 $R = 700.00'$

MATCHLINE -L- STA. 21+50 SEE SHEET 4

MATCHLINE -L- STA. 35+00 SEE SHEET 6