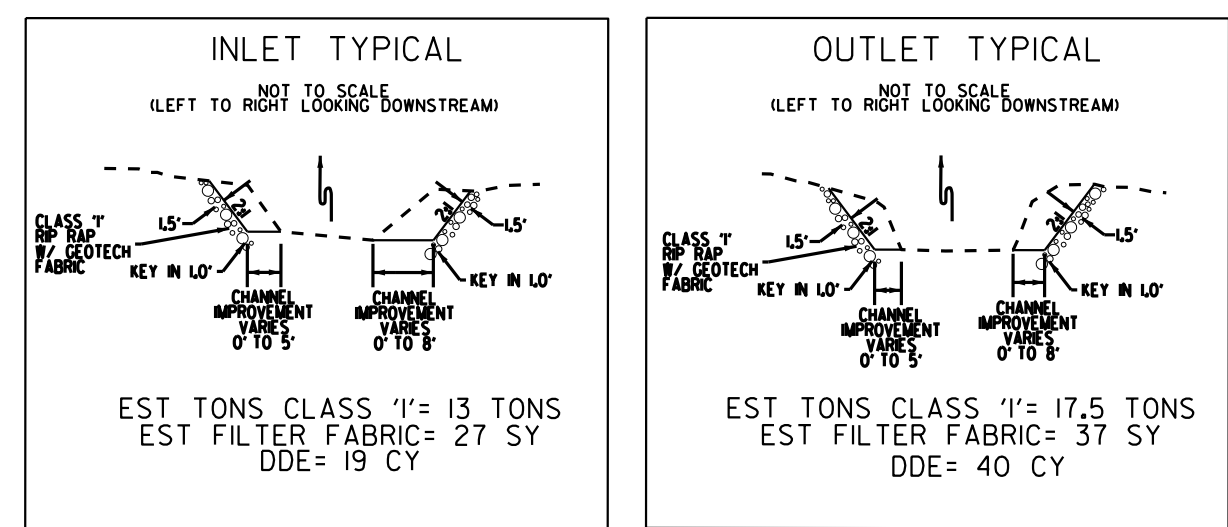
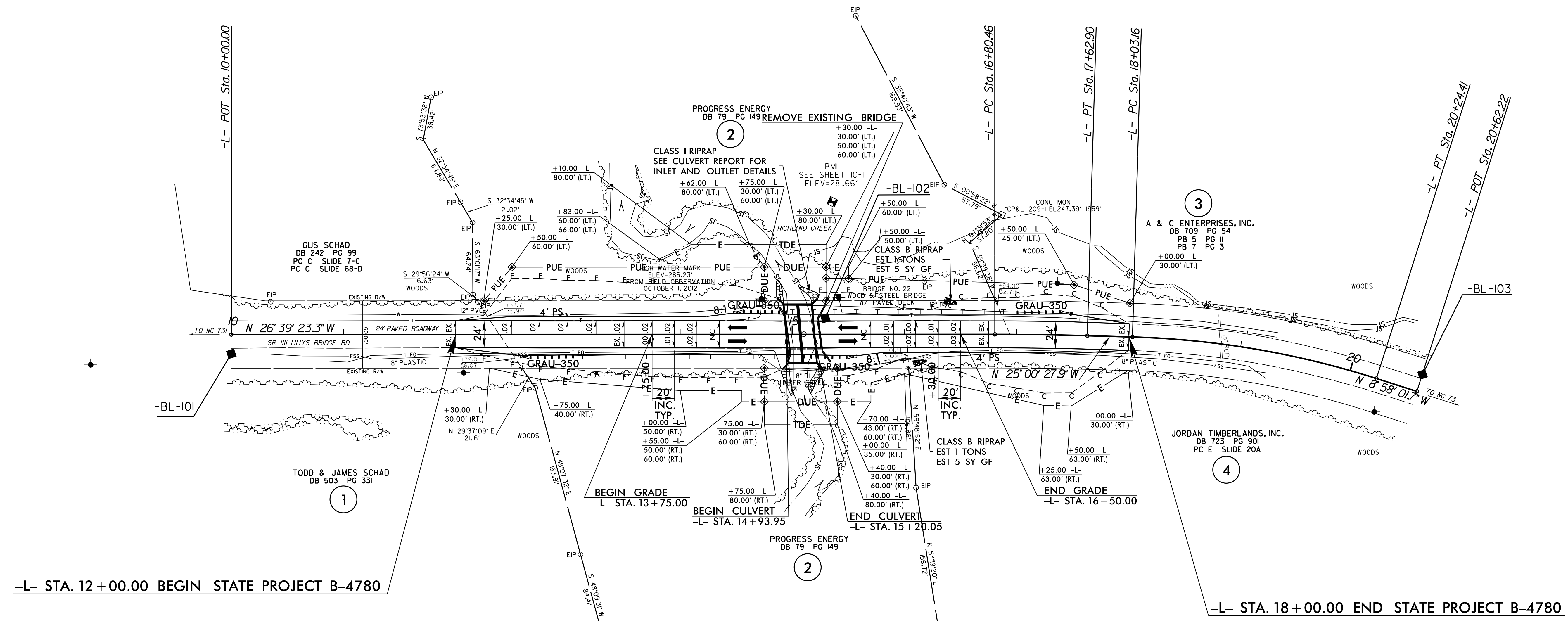
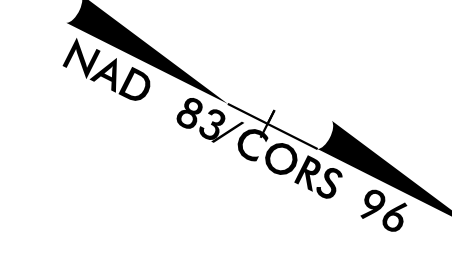


-L-	
PI Sta 17+21.68 Δ = 1°38'55.4" (RT) D = 2°00'00.0" L = 82.44' T = 41.22' R = 2,864.79' SE = NC	PI Sta 19+14.51 Δ = 16°02'26.3" (RT) D = 7°15'00.0" L = 221.25' T = 111.35' R = 790.29' SE = NC



NOTE 1: WEDGE EXISTING PAVEMENT FROM -L- STA. 12+50 TO STA. 13+75 LT. TO ELIMINATE EXCESSIVE CROSS-SLOPE AND TO MATCH THE 0.02 CROSS-SLOPE AT -L- STA. 13+75 LT. (BEGIN GRADE).

NOTE 2: TRANSITION PAVED SHOULDER TO EXISTING
 -L- STA. 12+00 TO STA. 12+50 LT. & RT.
 -L- STA. 17+50 TO STA. 18+00 LT. & RT.

SEE SHEET 5 FOR -L- PROFILE.
 SEE SHEETS C-1 THRU C-6 FOR CULVERT PLANS

REVISIONS

8/17/99

24 APR 2015 09:50 p4780.Rdy-psh.dgn
 9:50 AM 11/18/15