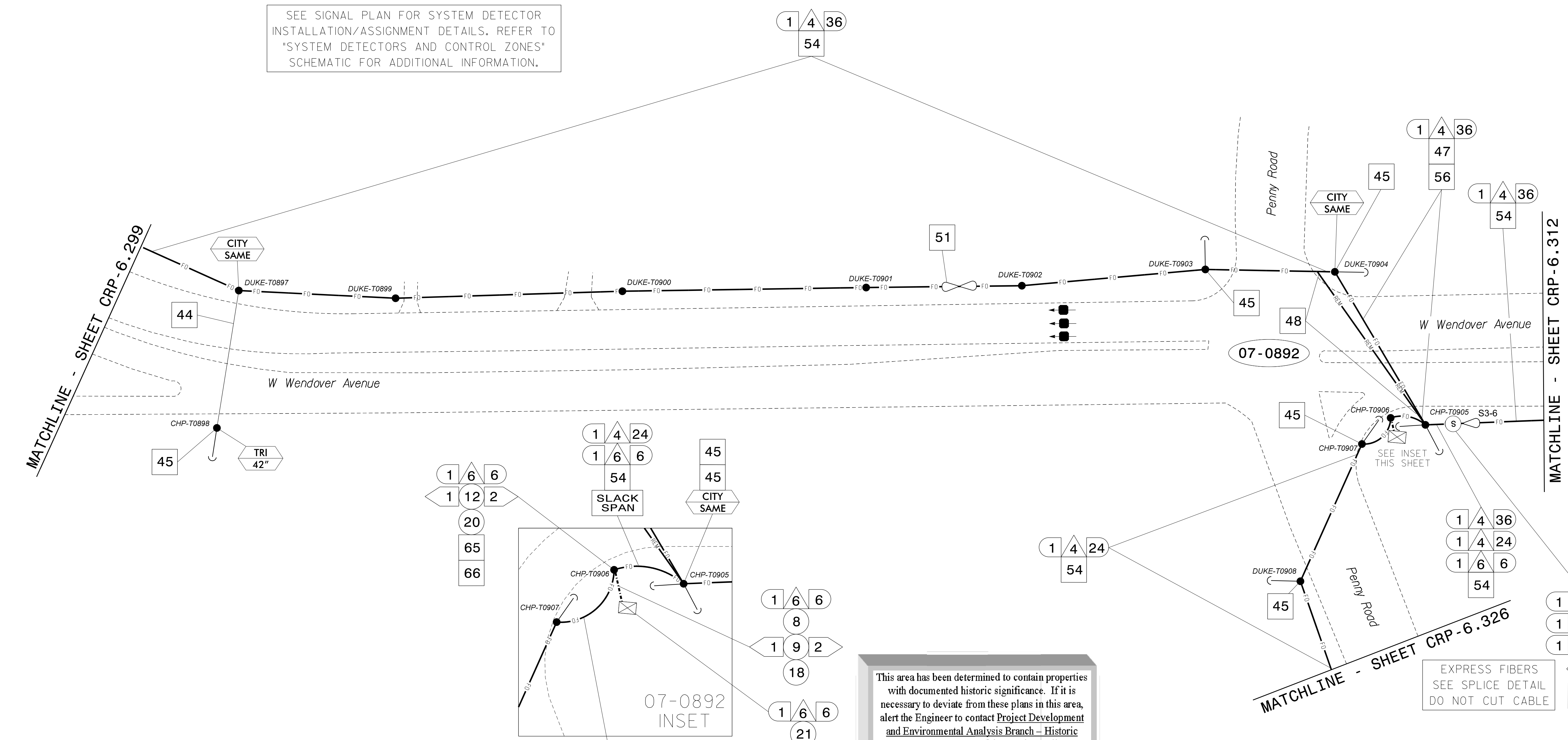


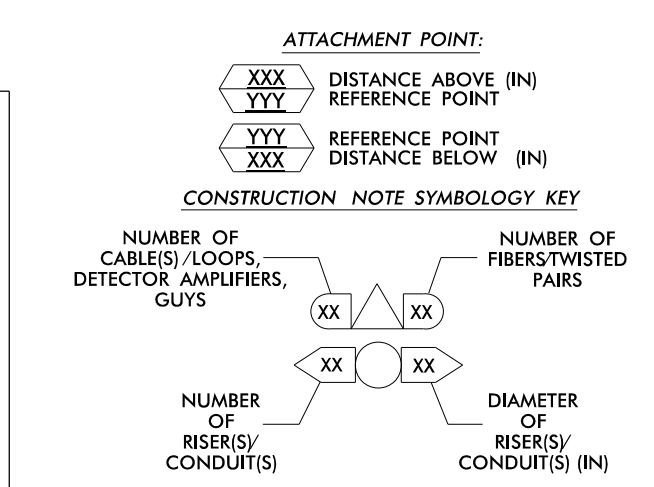
SEE SIGNAL PLAN FOR SYSTEM DETECTOR INSTALLATION/ASSIGNMENT DETAILS. REFER TO "SYSTEM DETECTORS AND CONTROL ZONES" SCHEMATIC FOR ADDITIONAL INFORMATION.



This area has been determined to contain properties with documented historic significance. If it is necessary to deviate from these plans in this area, alert the Engineer to contact Project Development and Environmental Analysis Branch - Historic Architecture Group of the North Carolina Department of Transportation for an effects determination before proceeding.

- NOTES:
1. UNLESS OTHERWISE NOTED:
- OVERLASH NEW FIBER OPTIC CABLE TO EXISTING COMMUNICATIONS CABLE.
- ATTACH NEW MESSENGER CABLE 40" BELOW POWER.
- ATTACH ON FRONT SIDE (FS) OF POLE.
2. SEAL ALL CONDUIT ENDS WITH DUCT AND CONDUIT SEALER, AT ALL JUNCTION BOX / CABINET ENTRANCES.

Legend table with 72 numbered items describing cable and equipment installation tasks, such as 'INSTALL COMPOSITE CCTV CABLE', 'INSTALL HEAT SHRINK TUBING RETROFIT KIT', 'INSTALL WIRELESS DSL', etc.



Project information block including the Atkins logo, project name 'High Point Signal System Cable Routing Plans', division 'Division 7 Guilford County High Point', dates, and a professional seal for Melissa B. Toth, Engineer.

05-JUN-2015 11:02
D:\projects\highpoint\proj\c:\cur\100037777 - High Point Sig_Sys\CL-311.dgn
WILE2054 AT DUS290140