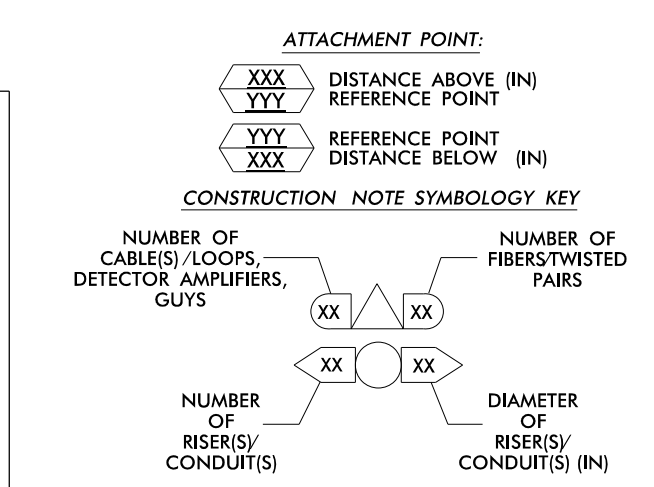


- NOTES:**
- UNLESS OTHERWISE NOTED:
    - OVERLASH NEW FIBER OPTIC CABLE TO EXISTING COMMUNICATIONS CABLE.
    - ATTACH NEW MESSENGER CABLE 40" BELOW POWER.
    - ATTACH ON FRONT SIDE (FS) OF POLE.
  - SEAL ALL CONDUIT ENDS WITH DUCT AND CONDUIT SEALER, AT ALL JUNCTION BOX / CABINET ENTRANCES.

1	INSTALL COMPOSITE CCTV CABLE	13	INSTALL HEAT SHRINK TUBING RETROFIT KIT	25	INSTALL NEW RISER INTO POLE MOUNTED CABINET	37	INSTALL CCTV WOOD POLE
2	INSTALL LOW VOLTAGE POWER CABLE (24VAC)	14	INSTALL HIGH DENSITY POLYETHYLENE CONDUIT	26	INSTALL DIGITAL VIDEO ENCODER	38	INSTALL STANDARD SIZE JUNCTION BOX
3	INSTALL CATEGORY 5E CABLE	15	DIRECTIONAL DRILL CONDUIT	27	INSTALL NEW ETHERNET EDGE SWITCH IN CABINET	39	INSTALL SPECIAL-SIZED JUNCTION BOX
4	INSTALL SMFO CABLE	16	BORE AND JACK CONDUIT	28	INSTALL INTERCONNECT CENTER, PATCH PANEL, JUMPERS, AND FUSION SPLICE CABLE IN CABINET	40	INSTALL OVER-SIZED JUNCTION BOX
5	NOT USED	17	INSTALL CABLE(S) IN EXISTING CONDUIT	29	INSTALL UNDERGROUND SPLICE ENCLOSURE	41	REMOVE EXISTING JUNCTION BOX
6	INSTALL FIBER-OPTIC DROP CABLE	18	INSTALL CABLE(S) IN NEW CONDUIT	30	INSTALL AERIAL SPLICE ENCLOSURE	42	INSTALL WOOD POLE
7	INSTALL TRACER WIRE	19	INSTALL CABLE(S) IN EXISTING RISER(S)	31	INSTALL SPLICE CABINET	43	REMOVE EXISTING WOOD POLE
8	INSTALL CONDUIT UNDERGROUND	20	INSTALL CABLE(S) IN NEW RISER(S)	32	MODIFY EXISTING SPLICE ENCLOSURE OR INTERCONNECT CENTER	44	INSTALL AERIAL GUY ASSEMBLY
9	INSTALL PVC CONDUIT	21	INSTALL CABLE(S) IN EXISTING CABINET ENTRANCE	33	REMOVE EXISTING SPLICE /HUB /CCTV CABINET	45	INSTALL STANDARD GUY ASSEMBLY
10	INSTALL RIGID, GALVANIZED STEEL CONDUIT	22	INSTALL NEW CONDUIT INTO CABINET BASE (USE EX CABINET ENTRANCE WHEN AVAILABLE)	34	INSTALL CABINET FOUNDATION	46	INSTALL SIDEWALK GUY ASSEMBLY
11	INSTALL RIGID, GALVANIZED STEEL RISER WITH WEATHERHEAD	23	INSTALL NEW RISER INTO CABINET BASE (USE EX CABINET ENTRANCE WHEN AVAILABLE)	35	REMOVE EXISTING CABINET FOUNDATION	47	INSTALL MESSENGER CABLE
12	INSTALL RIGID, GALVANIZED STEEL RISER WITH HEAT SHRINK TUBING	24	INSTALL NEW CONDUIT INTO POLE MOUNTED CABINET	36	INSTALL CCTV CAMERA ASSEMBLY	48	REMOVE EXISTING COMMUNICATIONS CABLE AND MESSENGER CABLE
49	REMOVE EXISTING COMMUNICATIONS CABLE	50	INSTALL WIRELESS DSL	51	INSTALL CABLE STORAGE GUIDE(S) [SNOW SHOE(S)] AND STORE 100 FEET OF EACH CABLE	52	INSTALL DELINEATOR MARKER
53	STORE 50 FEET OF COMMUNICATIONS CABLE (EACH CABLE)	53	LASH CABLE(S) TO EXISTING SIGNAL/COMMUNICATIONS CABLE	54	LASH CABLE(S) TO EXISTING MESSENGER CABLE	55	LASH CABLE(S) TO NEW MESSENGER CABLE
57	MODIFY EXISTING ELECTRICAL SERVICE FOR CCTV	57	MODIFY EXISTING ELECTRICAL SERVICE FOR CCTV	58	INSTALL NEW ELECTRICAL SERVICE FOR CCTV	58	INSTALL NEW POLE MOUNTED CCTV CABINET (336)
59	INSTALL NEW POLE MOUNTED CCTV CABINET (336)	59	INSTALL NEW POLE MOUNTED CCTV CABINET (336)	60	INSTALL NEW BUILDING MOUNTED CCTV CABINET (336)	60	INSTALL NEW BUILDING MOUNTED CCTV CABINET (336)
61	REMOVE EXISTING CCTV CAMERA ASSEMBLY	61	REMOVE EXISTING CCTV CAMERA ASSEMBLY	62	NEW CABINET ENTRANCE INTO NEW FOUNDATION	62	NEW CABINET ENTRANCE INTO NEW FOUNDATION
63	DRILL /CORE DRILL EXISTING FOUNDATION	63	DRILL /CORE DRILL EXISTING FOUNDATION	64	INTERCEPT AND REROUTE EXISTING CONDUITS	64	INTERCEPT AND REROUTE EXISTING CONDUITS
65	BOND MESSENGER TO POLE GROUND	65	BOND MESSENGER TO POLE GROUND	66	BOND RISER TO POLE GROUND	66	BOND RISER TO POLE GROUND
67	BOND TRACER WIRE TO EQUIPMENT GROUND BUS	67	BOND TRACER WIRE TO EQUIPMENT GROUND BUS	68	INSTALL NEW COVER ON OVER-SIZED JUNCTION BOX	68	INSTALL NEW COVER ON OVER-SIZED JUNCTION BOX
69	INSTALL NEW BASE MOUNTED CCTV CABINET (336-A)	69	INSTALL NEW BASE MOUNTED CCTV CABINET (336-A)	70	INSTALL NEW POLE MOUNTED CCTV CABINET (NEMA TYPE 4)	70	INSTALL NEW POLE MOUNTED CCTV CABINET (NEMA TYPE 4)
71	HANDLASH AND INSTALL AERIAL CABLE PROTECTOR	71	HANDLASH AND INSTALL AERIAL CABLE PROTECTOR				



**ATKINS** 1616 EAST MILLBROOK ROAD, SUITE 310  
 RALEIGH, NORTH CAROLINA 27609  
 (919) 876-6888 NCBEES #F-0326

Prepared for the Offices of:  
 Transportation Mobility and Safety Division  
 NORTH CAROLINA DEPARTMENT OF TRANSPORTATION  
 Transportation System Solutions

**High Point Signal System  
 Cable Routing Plans**

Division 7 Guilford County High Point

PLAN DATE: June 2015 REVIEWED BY: MB Toth  
 PREPARED BY: IW BERDAU REVIEWED BY: LM Moon

750 Greenfield Parkway, Garner, NC 27529

SCALE: 0 50 1"=50'

REVISIONS: INIT. DATE

Seal: NORTH CAROLINA PROFESSIONAL SEAL 025892 ENGINEER MELISSA B. TOOTH

Downloaded by: Melissa B. Toth 6/5/2015 DATE  
 CADD File name: CL-285.dgn

05-JUN-2015 11:00 D:\projects\atkins\proj\off\c\curr\100037777 - High Point Sig\_Sys\CL-285.dgn FILED054 AT DUS290140