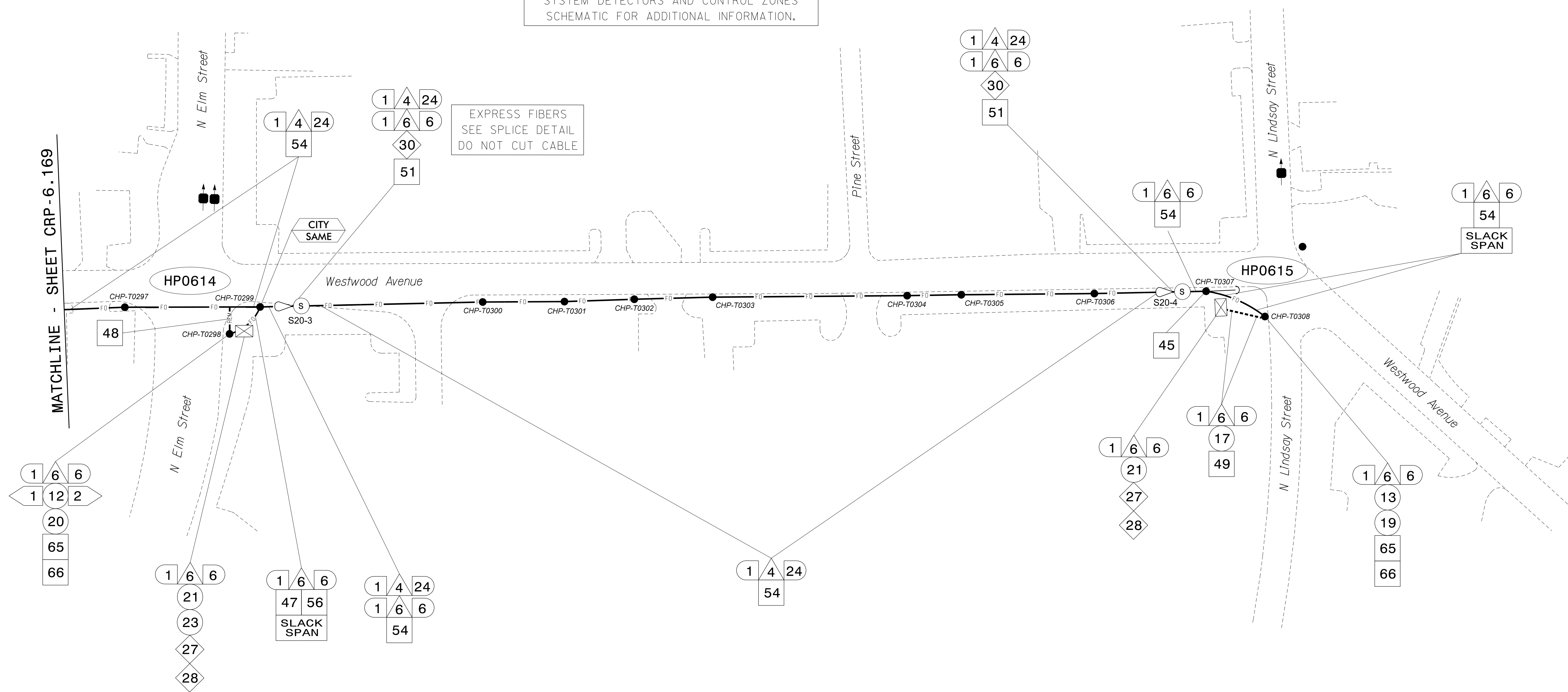


SEE SIGNAL PLAN FOR SYSTEM DETECTOR INSTALLATION/ASSIGNMENT DETAILS. REFER TO "SYSTEM DETECTORS AND CONTROL ZONES" SCHEMATIC FOR ADDITIONAL INFORMATION.

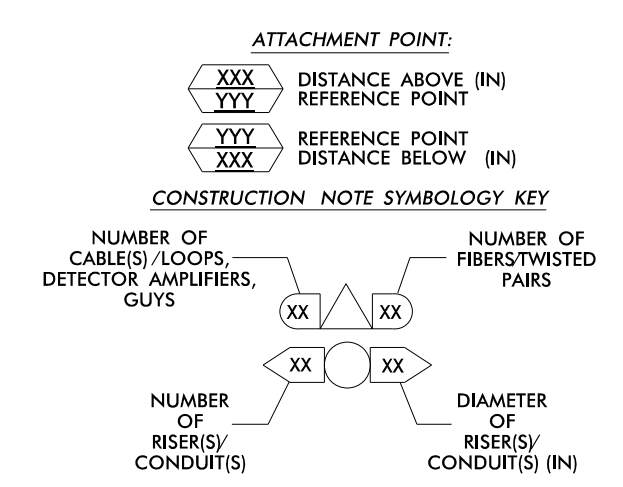


EXPRESS FIBERS SEE SPLICE DETAIL DO NOT CUT CABLE

MATCHLINE - SHEET CRP-6.169

- NOTES: 1. UNLESS OTHERWISE NOTED: - OVERLASH NEW FIBER OPTIC CABLE TO EXISTING COMMUNICATIONS CABLE. - ATTACH NEW MESSENGER CABLE 40" BELOW POWER. - ATTACH ON FRONT SIDE (FS) OF POLE. 2. SEAL ALL CONDUIT ENDS WITH DUCT AND CONDUIT SEALER, AT ALL JUNCTION BOX / CABINET ENTRANCES.

Table with 7 columns and 12 rows of callout numbers and descriptions for cable and equipment installation.



ATKINS 1616 EAST MILLBROOK ROAD, SUITE 310 RALEIGH, NORTH CAROLINA 27609 (919) 876-6888 NCBEES #F-0326

Project information block including title 'High Point Signal System Cable Routing Plans', division 'Division 7', date 'June 2015', and professional seal of Melissa B. Toth.

05-JUN-2015 10:54 0:47:00 c:\projects\hpt\proj\c:\cur\100037777 - High Point Sig\_Sys\CL-170.dgn AT DUS290140