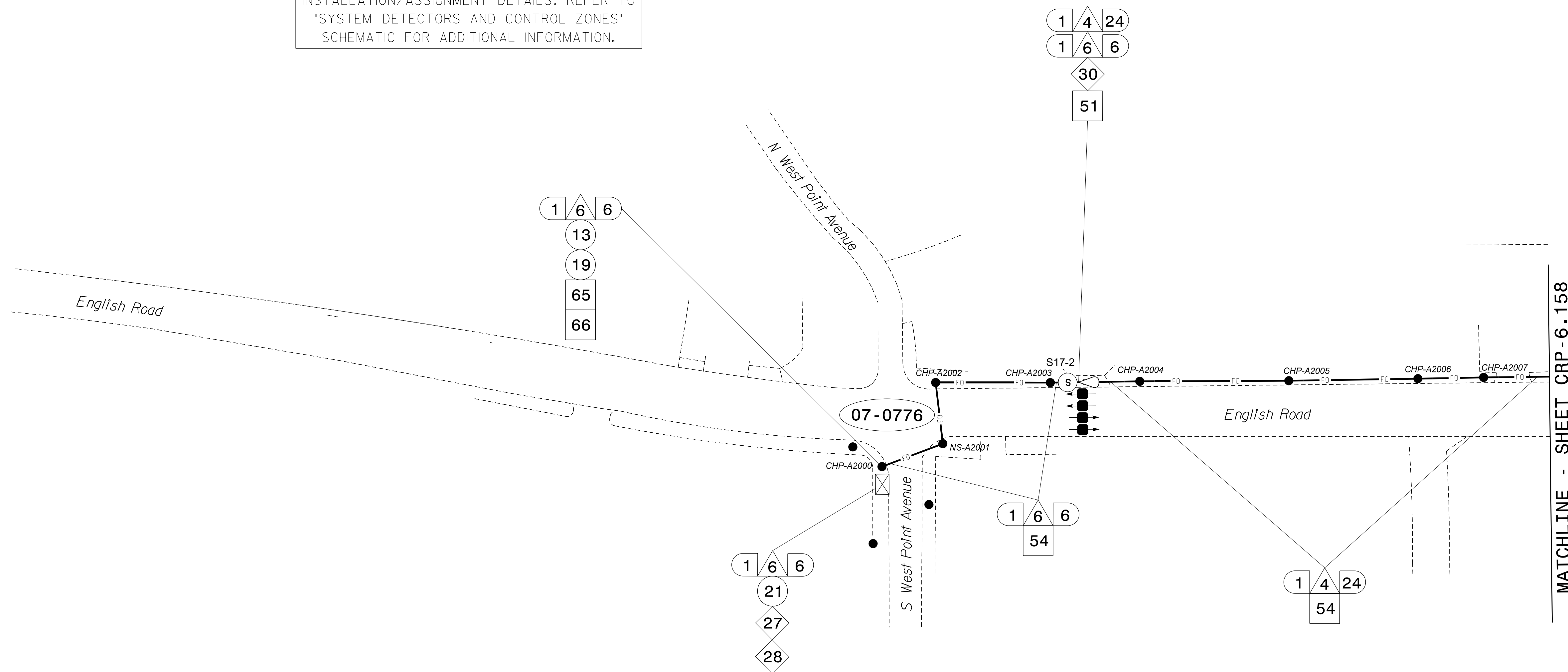


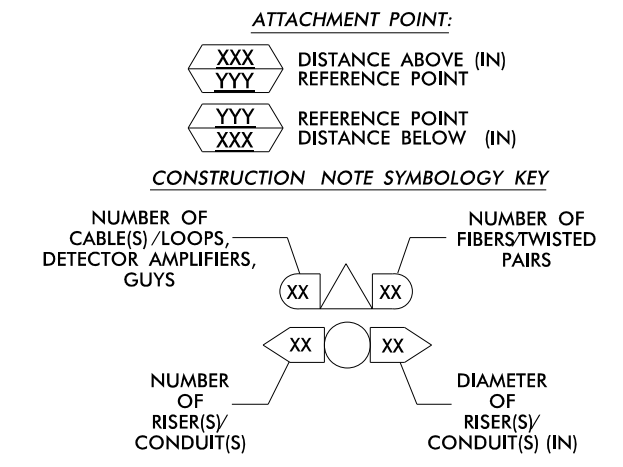
SEE SIGNAL PLAN FOR SYSTEM DETECTOR INSTALLATION/ASSIGNMENT DETAILS. REFER TO "SYSTEM DETECTORS AND CONTROL ZONES" SCHEMATIC FOR ADDITIONAL INFORMATION.



NOTES:

- 1. UNLESS OTHERWISE NOTED:
- OVERLASH NEW FIBER OPTIC CABLE TO EXISTING COMMUNICATIONS CABLE.
- ATTACH NEW MESSENGER CABLE 40" BELOW POWER.
- ATTACH ON FRONT SIDE (FS) OF POLE.
2. SEAL ALL CONDUIT ENDS WITH DUCT AND CONDUIT SEALER, AT ALL JUNCTION BOX / CABINET ENTRANCES.

Table with 12 columns and 24 rows of callout numbers and descriptions for cable installation and equipment specifications.



ATKINS 1616 EAST MILLBROOK ROAD, SUITE 310 RALEIGH, NORTH CAROLINA 27609 (919) 876-6888 NCBEEES #F-0326

Project information block including 'High Point Signal System Cable Routing Plans', 'Division 7 Guilford County High Point', 'Prepared by: NM Chapman', 'Reviewed by: MB Toth', and a professional seal for Melissa B. Toth, Engineer.

05-JUN-2015 10:54 D:\projects\atkins\proj\c\cur\100037777 - High Point Sig_Sys\CL-157.dgn WILE2054 AT DUS290140