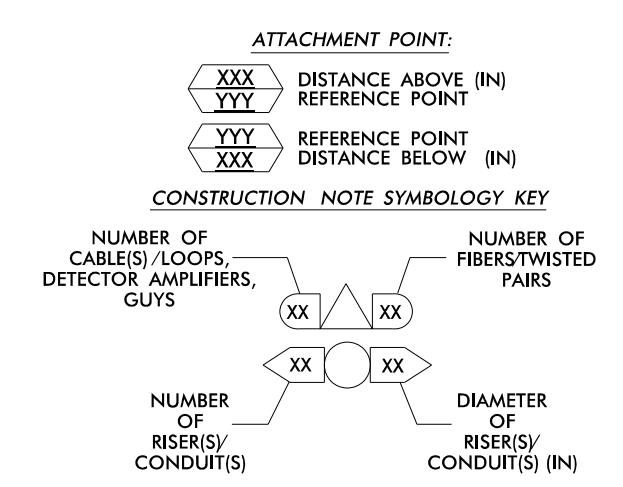


SEE SIGNAL PLAN FOR SYSTEM DETECTOR INSTALLATION/ASSIGNMENT DETAILS. REFER TO "SYSTEM DETECTORS AND CONTROL ZONES" SCHEMATIC FOR ADDITIONAL INFORMATION.

NOTES:

- UNLESS OTHERWISE NOTED:
 - OVERLASH NEW FIBER OPTIC CABLE TO EXISTING COMMUNICATIONS CABLE.
 - ATTACH NEW MESSENGER CABLE 40" BELOW POWER.
 - ATTACH ON FRONT SIDE (FS) OF POLE.
- SEAL ALL CONDUIT ENDS WITH DUCT AND CONDUIT SEALER, AT ALL JUNCTION BOX / CABINET ENTRANCES.

1	INSTALL COMPOSITE CCTV CABLE	13	INSTALL HEAT SHRINK TUBING RETROFIT KIT	25	INSTALL NEW RISER INTO POLE MOUNTED CABINET	37	INSTALL CCTV WOOD POLE	49	REMOVE EXISTING COMMUNICATIONS CABLE	61	REMOVE EXISTING CCTV CAMERA ASSEMBLY
2	INSTALL LOW VOLTAGE POWER CABLE (24VAC)	14	INSTALL HIGH DENSITY POLYETHYLENE CONDUIT	26	INSTALL DIGITAL VIDEO ENCODER	38	INSTALL STANDARD SIZE JUNCTION BOX	50	INSTALL WIRELESS DSL	62	NEW CABINET ENTRANCE INTO NEW FOUNDATION
3	INSTALL CATEGORY 5E CABLE	15	DIRECTIONAL DRILL CONDUIT	27	INSTALL NEW ETHERNET EDGE SWITCH IN CABINET	39	INSTALL SPECIAL-SIZED JUNCTION BOX	51	INSTALL CABLE STORAGE GUIDE(S) [SNOW SHOE(S)] AND STORE 100 FEET OF EACH CABLE	63	DRILL /CORE DRILL EXISTING FOUNDATION
4	INSTALL SMFO CABLE	16	BORE AND JACK CONDUIT	28	INSTALL INTERCONNECT CENTER, PATCH PANEL, JUMPERS, AND FUSION SPLICE CABLE IN CABINET	40	INSTALL OVER-SIZED JUNCTION BOX	52	INSTALL DELINEATOR MARKER	64	INTERCEPT AND REROUTE EXISTING CONDUITS
5	NOT USED	17	INSTALL CABLE(S) IN EXISTING CONDUIT	29	INSTALL UNDERGROUND SPLICE ENCLOSURE	41	REMOVE EXISTING JUNCTION BOX	53	STORE 50 FEET OF COMMUNICATIONS CABLE (EACH CABLE)	65	BOND MESSENGER TO POLE GROUND
6	INSTALL FIBER-OPTIC DROP CABLE	18	INSTALL CABLE(S) IN NEW CONDUIT	30	INSTALL AERIAL SPLICE ENCLOSURE	42	INSTALL WOOD POLE	54	LASH CABLE(S) TO EXISTING SIGNAL/COMMUNICATIONS CABLE	66	BOND RISER TO POLE GROUND
7	INSTALL TRACER WIRE	19	INSTALL CABLE(S) IN EXISTING RISER(S)	31	INSTALL SPLICE CABINET	43	REMOVE EXISTING WOOD POLE	55	LASH CABLE(S) TO EXISTING MESSENGER CABLE	67	BOND TRACER WIRE TO EQUIPMENT GROUND BUS
8	INSTALL CONDUIT UNDERGROUND	20	INSTALL CABLE(S) IN NEW RISER(S)	32	MODIFY EXISTING SPLICE ENCLOSURE OR INTERCONNECT CENTER	44	INSTALL AERIAL GUY ASSEMBLY	56	LASH CABLE(S) TO NEW MESSENGER CABLE	68	INSTALL NEW COVER ON OVER-SIZED JUNCTION BOX
9	INSTALL PVC CONDUIT	21	INSTALL CABLE(S) IN EXISTING CABINET ENTRANCE	33	REMOVE EXISTING SPLICE /HUB /CCTV CABINET	45	INSTALL STANDARD GUY ASSEMBLY	57	MODIFY EXISTING ELECTRICAL SERVICE FOR CCTV	69	INSTALL NEW BASE MOUNTED CCTV CABINET (336-A)
10	INSTALL RIGID, GALVANIZED STEEL CONDUIT	22	INSTALL NEW CONDUIT INTO CABINET BASE (USE EX CABINET ENTRANCE WHEN AVAILABLE)	34	INSTALL CABINET FOUNDATION	46	INSTALL SIDEWALK GUY ASSEMBLY	58	INSTALL NEW ELECTRICAL SERVICE FOR CCTV	70	INSTALL NEW POLE MOUNTED CCTV CABINET (NEMA TYPE 4)
11	INSTALL RIGID, GALVANIZED STEEL RISER WITH WEATHERHEAD	23	INSTALL NEW RISER INTO CABINET BASE (USE EX CABINET ENTRANCE WHEN AVAILABLE)	35	REMOVE EXISTING CABINET FOUNDATION	47	INSTALL MESSENGER CABLE	59	INSTALL NEW POLE MOUNTED CCTV CABINET (336)	71	HANDLASH AND INSTALL AERIAL CABLE PROTECTOR
12	INSTALL RIGID, GALVANIZED STEEL RISER WITH HEAT SHRINK TUBING	24	INSTALL NEW CONDUIT INTO POLE MOUNTED CABINET	36	INSTALL CCTV CAMERA ASSEMBLY	48	REMOVE EXISTING COMMUNICATIONS CABLE AND MESSENGER CABLE	60	INSTALL NEW BUILDING MOUNTED CCTV CABINET (336)		



ATKINS 1616 EAST MILLBROOK ROAD, SUITE 310
RALEIGH, NORTH CAROLINA 27609
(919) 876-6888 NCBEES #F-0326

Prepared for the Offices of:
High Point Signal System
 Cable Routing Plans

Division 7 Guilford County High Point

PLAN DATE: June 2015 REVIEWED BY: MB Toth
 PREPARED BY: SM ROULEAU REVIEWED BY: LM Moon

750 Greenfield Parkway, Garner, NC 27529

SCALE: 0 50 1"=50'

REVISIONS: INIT. DATE

DocuSigned by: Melissa B. Toth 6/5/2015
 CAD File name: CL-126.dgn

05-JUN-2015 10:53 D:\projects\hightpoint\proj\c:\cur\100037777 - High Point Sig_Sys\CL-126.dgn WLE2054 AT DUS290140