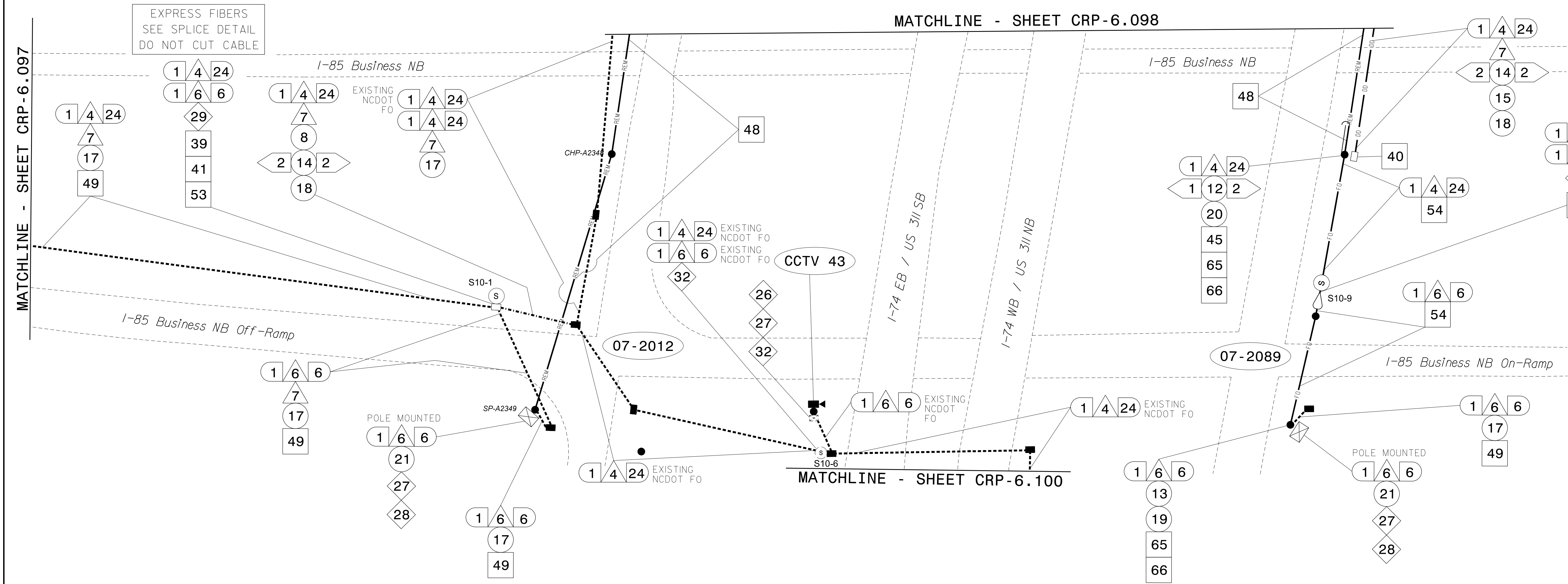
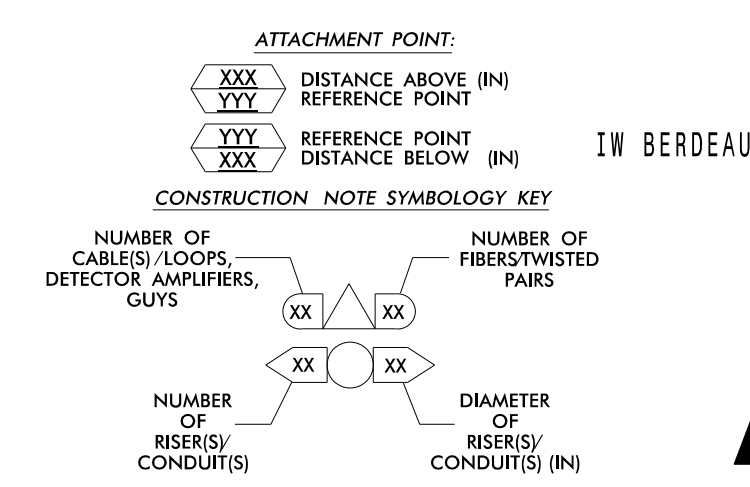


FIBER ALONG US 311/I-74 BETWEEN I-85 BUS AND I-85 PREVIOUSLY INSTALLED UNDER TIP R-0509IA



- NOTES:
1. UNLESS OTHERWISE NOTED:
- OVERLASH NEW FIBER OPTIC CABLE TO EXISTING COMMUNICATIONS CABLE.
- ATTACH NEW MESSENGER CABLE 40" BELOW POWER.
- ATTACH ON FRONT SIDE (FS) OF POLE.
2. SEAL ALL CONDUIT ENDS WITH DUCT AND CONDUIT SEALER, AT ALL JUNCTION BOX / CABINET ENTRANCES.

Legend table with 72 numbered items: 1. INSTALL COMPOSITE CCTV CABLE, 2. INSTALL LOW VOLTAGE POWER CABLE (24VAC), 3. INSTALL CATEGORY 5E CABLE, 4. INSTALL SMFO CABLE, 5. NOT USED, 6. INSTALL FIBER-OPTIC DROP CABLE, 7. INSTALL TRACER WIRE, 8. INSTALL CONDUIT UNDERGROUND, 9. INSTALL PVC CONDUIT, 10. INSTALL RIGID, GALVANIZED STEEL CONDUIT, 11. INSTALL RIGID, GALVANIZED STEEL RISER WITH WEATHERHEAD, 12. INSTALL RIGID, GALVANIZED STEEL RISER WITH HEAT SHRINK TUBING, 13. INSTALL HEAT SHRINK TUBING RETROFIT KIT, 14. INSTALL HIGH DENSITY POLYETHYLENE CONDUIT, 15. DIRECTIONAL DRILL CONDUIT, 16. BORE AND JACK CONDUIT, 17. INSTALL CABLE(S) IN EXISTING CONDUIT, 18. INSTALL CABLE(S) IN NEW CONDUIT, 19. INSTALL CABLE(S) IN EXISTING RISER(S), 20. INSTALL CABLE(S) IN NEW RISER(S), 21. INSTALL CABLE(S) IN EXISTING CABINET ENTRANCE, 22. INSTALL NEW CONDUIT INTO CABINET BASE (USE EX CABINET ENTRANCE WHEN AVAILABLE), 23. INSTALL NEW RISER INTO CABINET BASE (USE EX CABINET ENTRANCE WHEN AVAILABLE), 24. INSTALL NEW CONDUIT INTO POLE MOUNTED CABINET, 25. INSTALL NEW RISER INTO POLE MOUNTED CABINET, 26. INSTALL DIGITAL VIDEO ENCODER, 27. INSTALL NEW ETHERNET EDGE SWITCH IN CABINET, 28. INSTALL INTERCONNECT CENTER, PATCH PANEL, JUMPERS, AND FUSION SPLICE CABLE IN CABINET, 29. INSTALL UNDERGROUND SPLICE ENCLOSURE, 30. INSTALL AERIAL SPLICE ENCLOSURE, 31. INSTALL SPLICE CABINET, 32. MODIFY EXISTING SPLICE ENCLOSURE OR INTERCONNECT CENTER, 33. REMOVE EXISTING SPLICE /HUB /CCTV CABINET, 34. INSTALL CABINET FOUNDATION, 35. REMOVE EXISTING CABINET FOUNDATION, 36. INSTALL CCTV CAMERA ASSEMBLY, 37. INSTALL CCTV WOOD POLE, 38. INSTALL STANDARD SIZE JUNCTION BOX, 39. INSTALL SPECIAL-SIZED JUNCTION BOX, 40. INSTALL OVER-SIZED JUNCTION BOX, 41. REMOVE EXISTING JUNCTION BOX, 42. INSTALL WOOD POLE, 43. REMOVE EXISTING WOOD POLE, 44. INSTALL AERIAL GUY ASSEMBLY, 45. INSTALL STANDARD GUY ASSEMBLY, 46. INSTALL SIDEWALK GUY ASSEMBLY, 47. INSTALL MESSENGER CABLE, 48. REMOVE EXISTING COMMUNICATIONS CABLE AND MESSENGER CABLE, 49. REMOVE EXISTING COMMUNICATIONS CABLE, 50. INSTALL WIRELESS DSL, 51. INSTALL CABLE STORAGE GUIDE(S) [SNOW SHOE(S)] AND STORE 100 FEET OF EACH CABLE, 52. INSTALL DELINEATOR MARKER, 53. STORE 50 FEET OF COMMUNICATIONS CABLE (EACH CABLE), 54. LASH CABLE(S) TO EXISTING SIGNAL/COMMUNICATIONS CABLE, 55. LASH CABLE(S) TO EXISTING MESSENGER CABLE, 56. LASH CABLE(S) TO NEW MESSENGER CABLE, 57. MODIFY EXISTING ELECTRICAL SERVICE FOR CCTV, 58. INSTALL NEW ELECTRICAL SERVICE FOR CCTV, 59. INSTALL NEW POLE MOUNTED CCTV CABINET (336), 60. INSTALL NEW BUILDING MOUNTED CCTV CABINET (336), 61. REMOVE EXISTING CCTV CAMERA ASSEMBLY, 62. NEW CABINET ENTRANCE INTO NEW FOUNDATION, 63. DRILL /CORE DRILL EXISTING FOUNDATION, 64. INTERCEPT AND REROUTE EXISTING CONDUITS, 65. BOND MESSENGER TO POLE GROUND, 66. BOND RISER TO POLE GROUND, 67. BOND TRACER WIRE TO EQUIPMENT GROUND BUS, 68. INSTALL NEW COVER ON OVER-SIZED JUNCTION BOX, 69. INSTALL NEW BASE MOUNTED CCTV CABINET (336-A), 70. INSTALL NEW POLE MOUNTED CCTV CABINET (336), 71. HANDLASH AND INSTALL AERIAL CABLE PROTECTOR



Project information block including Atkins logo, project name 'High Point Signal System Cable Routing Plans', division 'Division 7 Guilford County High Point', plan date 'June 2015', and professional seal for Melissa B. Toth, Engineer, License No. 025892.

05-JUN-2015 10:52 AM C:\Users\mtoth\OneDrive\Work\Projects\High Point Signal System\CL-099.dgn