

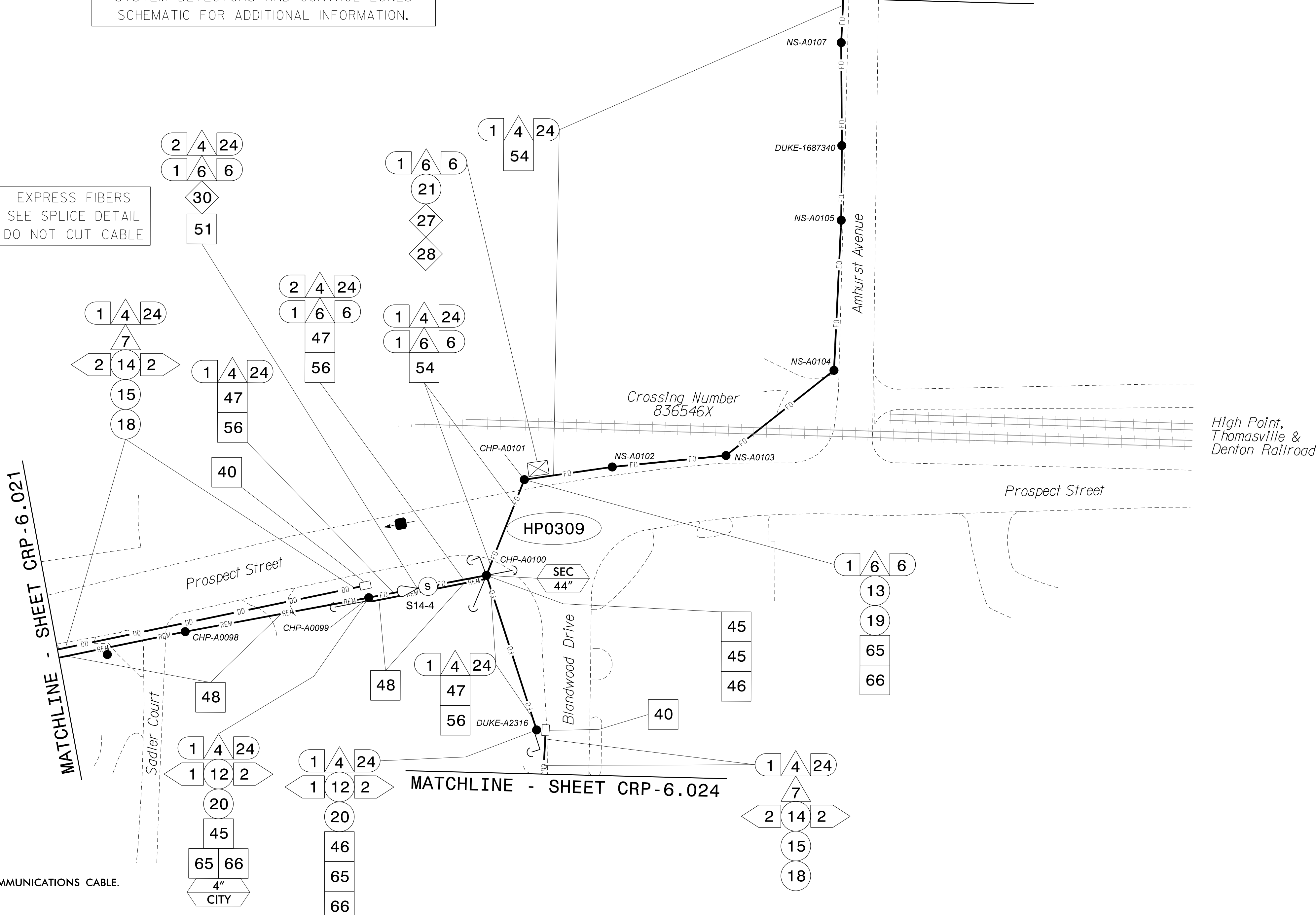
SEE SIGNAL PLAN FOR SYSTEM DETECTOR INSTALLATION/ASSIGNMENT DETAILS. REFER TO "SYSTEM DETECTORS AND CONTROL ZONES" SCHEMATIC FOR ADDITIONAL INFORMATION.

EXPRESS FIBERS SEE SPLICE DETAIL DO NOT CUT CABLE

MATCHLINE - SHEET CRP-6.025

MATCHLINE - SHEET CRP-6.021

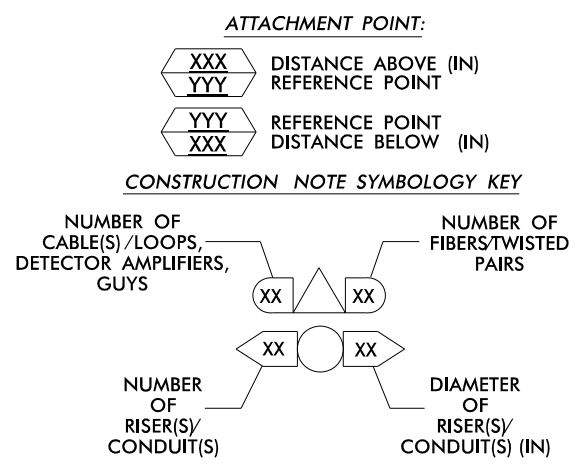
MATCHLINE - SHEET CRP-6.024



NOTES:

- 1. UNLESS OTHERWISE NOTED:
- OVERLASH NEW FIBER OPTIC CABLE TO EXISTING COMMUNICATIONS CABLE.
- ATTACH NEW MESSENGER CABLE 40" BELOW POWER.
- ATTACH ON FRONT SIDE (FS) OF POLE.
2. SEAL ALL CONDUIT ENDS WITH DUCT AND CONDUIT SEALER, AT ALL JUNCTION BOX / CABINET ENTRANCES.

Table with 7 columns and 24 rows of numbered callouts (1-71) corresponding to specific installation tasks such as 'INSTALL COMPOSITE CCTV CABLE', 'INSTALL HEAT SHRINK TUBING', 'INSTALL WIRELESS DSL', etc.



ATKINS 1616 EAST MILLBROOK ROAD, SUITE 310 RALEIGH, NORTH CAROLINA 27609 (919) 876-6888 NCBEEES #F-0326

Project information block including 'High Point Signal System Cable Routing Plans', 'Division 7 Guilford County High Point', dates, and signatures of Melina B. Toth.

05-JUN-2015 10:50 D:\projects\atkins\proj\crp\crp-6\crp-6.022.dgn