

EXPRESS FIBERS
SEE SPLICE DETAIL
DO NOT CUT CABLE

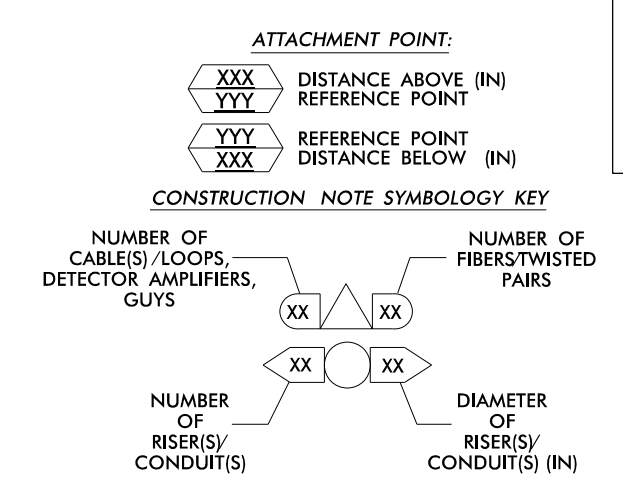
SEE SIGNAL PLAN FOR SYSTEM DETECTOR
INSTALLATION/ASSIGNMENT DETAILS. REFER TO
"SYSTEM DETECTORS AND CONTROL ZONES"
SCHEMATIC FOR ADDITIONAL INFORMATION.

EXPRESS FIBERS
SEE SPLICE DETAIL
DO NOT CUT CABLE

NOTES:

- UNLESS OTHERWISE NOTED:
 - OVERLASH NEW FIBER OPTIC CABLE TO EXISTING COMMUNICATIONS CABLE.
 - ATTACH NEW MESSENGER CABLE 40" BELOW POWER.
 - ATTACH ON FRONT SIDE (FS) OF POLE.
- SEAL ALL CONDUIT ENDS WITH DUCT AND CONDUIT SEALER, AT ALL JUNCTION BOX / CABINET ENTRANCES.

| | | | | | |
|---|--|---|--|--|---|
| 1. INSTALL COMPOSITE CCTV CABLE | 13. INSTALL HEAT SHRINK TUBING RETROFIT KIT | 25. INSTALL NEW RISER INTO POLE MOUNTED CABINET | 37. INSTALL CCTV WOOD POLE | 49. REMOVE EXISTING COMMUNICATIONS CABLE | 61. REMOVE EXISTING CCTV CAMERA ASSEMBLY FOUNDATION |
| 2. INSTALL LOW VOLTAGE POWER CABLE (24VAC) | 14. INSTALL HIGH DENSITY POLYETHYLENE CONDUIT | 26. INSTALL DIGITAL VIDEO ENCODER | 38. INSTALL STANDARD SIZE JUNCTION BOX | 50. INSTALL WIRELESS DSL | 62. NEW CABINET ENTRANCE INTO NEW FOUNDATION |
| 3. INSTALL CATEGORY 5E CABLE | 15. DIRECTIONAL DRILL CONDUIT | 27. INSTALL NEW ETHERNET EDGE SWITCH IN CABINET | 39. INSTALL SPECIAL-SIZED JUNCTION BOX | 51. INSTALL CABLE STORAGE GUIDE(S) [SNOW SHOE(S)] AND STORE 100 FEET OF EACH CABLE | 63. DRILL /CORE DRILL EXISTING FOUNDATION |
| 4. INSTALL SMFO CABLE | 16. BORE AND JACK CONDUIT | 28. INSTALL INTERCONNECT CENTER, PATCH PANEL, JUMPERS, AND FUSION SPLICE CABLE IN CABINET | 40. INSTALL OVER-SIZED JUNCTION BOX | 52. INSTALL DELINEATOR MARKER | 64. INTERCEPT AND REROUTE EXISTING CONDUITS |
| 5. NOT USED | 17. INSTALL CABLE(S) IN EXISTING CONDUIT | 29. INSTALL UNDERGROUND SPLICE ENCLOSURE | 41. REMOVE EXISTING JUNCTION BOX | 53. STORE 50 FEET OF COMMUNICATIONS CABLE (EACH CABLE) | 65. BOND MESSENGER TO POLE GROUND |
| 6. INSTALL FIBER-OPTIC DROP CABLE | 18. INSTALL CABLE(S) IN NEW CONDUIT | 30. INSTALL AERIAL SPLICE ENCLOSURE | 42. INSTALL WOOD POLE | 54. LASH CABLE(S) TO EXISTING SIGNAL/COMMUNICATIONS CABLE | 66. BOND RISER TO POLE GROUND |
| 7. INSTALL TRACER WIRE | 19. INSTALL CABLE(S) IN EXISTING RISER(S) | 31. INSTALL SPLICE CABINET | 43. REMOVE EXISTING WOOD POLE | 55. LASH CABLE(S) TO EXISTING MESSENGER CABLE | 67. BOND TRACER WIRE TO EQUIPMENT GROUND BUS |
| 8. INSTALL CONDUIT UNDERGROUND | 20. INSTALL CABLE(S) IN NEW RISER(S) | 32. MODIFY EXISTING SPLICE ENCLOSURE OR INTERCONNECT CENTER | 44. INSTALL AERIAL GUY ASSEMBLY | 56. LASH CABLE(S) TO NEW MESSENGER CABLE | 68. INSTALL NEW COVER ON OVER-SIZED JUNCTION BOX |
| 9. INSTALL PVC CONDUIT | 21. INSTALL CABLE(S) IN EXISTING CABINET ENTRANCE | 33. REMOVE EXISTING SPLICE /HUB /CCTV CABINET | 45. INSTALL STANDARD GUY ASSEMBLY | 57. MODIFY EXISTING ELECTRICAL SERVICE FOR CCTV | 69. INSTALL NEW BASE MOUNTED CCTV CABINET (336-A) |
| 10. INSTALL RIGID, GALVANIZED STEEL CONDUIT | 22. INSTALL NEW CONDUIT INTO CABINET BASE (USE EX CABINET ENTRANCE WHEN AVAILABLE) | 34. INSTALL CABINET FOUNDATION | 46. INSTALL SIDEWALK GUY ASSEMBLY | 58. INSTALL NEW ELECTRICAL SERVICE FOR CCTV | 70. INSTALL NEW POLE MOUNTED CCTV CABINET (NEMA TYPE 4) |
| 11. INSTALL RIGID, GALVANIZED STEEL RISER WITH WEATHERHEAD | 23. INSTALL NEW RISER INTO CABINET BASE (USE EX CABINET ENTRANCE WHEN AVAILABLE) | 35. REMOVE EXISTING CABINET FOUNDATION | 47. INSTALL MESSENGER CABLE | 59. INSTALL NEW POLE MOUNTED CCTV CABINET (336) | 71. HANDLASH AND INSTALL AERIAL CABLE PROTECTOR |
| 12. INSTALL RIGID, GALVANIZED STEEL RISER WITH HEAT SHRINK TUBING | 24. INSTALL NEW CONDUIT INTO POLE MOUNTED CABINET | 36. INSTALL CCTV CAMERA ASSEMBLY | 48. REMOVE EXISTING COMMUNICATIONS CABLE AND MESSENGER CABLE | 60. INSTALL NEW BUILDING MOUNTED CCTV CABINET (336) | |



ATKINS 1616 EAST MILLBROOK ROAD, SUITE 310
RALEIGH, NORTH CAROLINA 27609
(919) 876-6888 NCBEE #F-0326

Prepared for the Offices of:

 High Point Signal System
 Cable Routing Plans

Division 7 Guilford County High Point

PLAN DATE: June 2015 REVIEWED BY: MB Toth
 PREPARED BY: SM ROULEAU REVIEWED BY: LM Moon

750 Greenfield Parkway, Garner, NC 27529

SCALE: 0 50 1"=50'

DocuSigned by:
 Melissa B. Toth 6/5/2015
 CL-006.dgn

05-JUN-2015 10:50
 D:\projects\atkins\proj\crp\crp-6\crp-6.dgn - High Point Sig_Sys\crp-6.dgn
 WLE2054 AT DUS290140