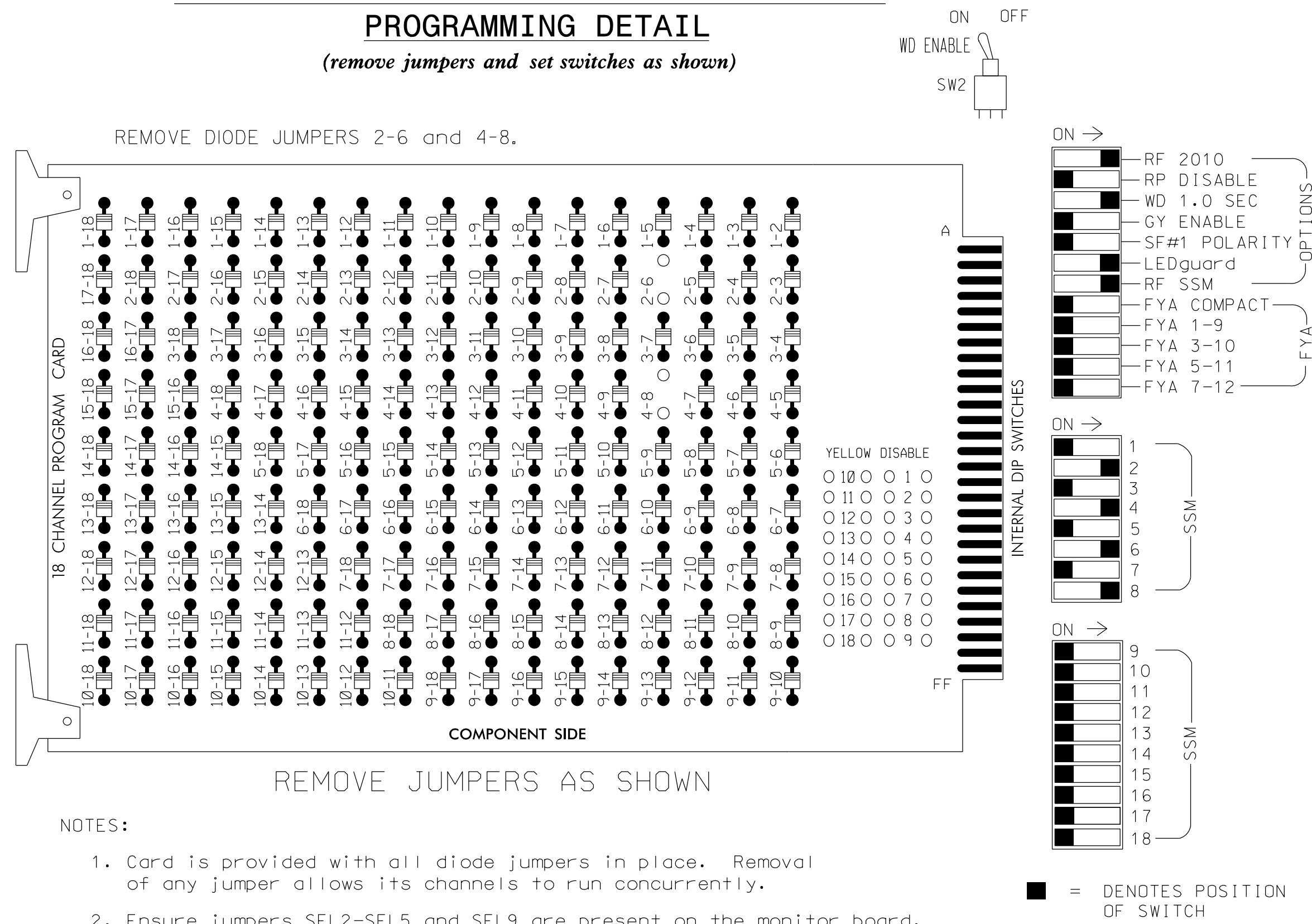


EDI MODEL 2018ECL-NC CONFLICT MONITOR PROGRAMMING DETAIL

(remove jumpers and set switches as shown)



NOTES

- To prevent "flash-conflict" problems, insert red flash program blocks for all unused vehicle load switches in the output file. The installer shall verify that signal heads flash in accordance with the Signal Plans.
- Enable Simultaneous Gap-Out for all phases.
- Program phases 2 and 6 for Start Up In Green.
- Program phases 2 and 6 for Yellow Flash.
- The cabinet and controller are part of the High Point Signal System.

EQUIPMENT INFORMATION

CONTROLLER.....2070E
 CABINET.....332
 SOFTWARE.....ECONOLITE OASIS
 CABINET MOUNT.....BASE
 OUTPUT FILE POSITIONS...12
 LOAD SWITCHES USED.....S2,S5,S8,S11
 PHASES USED.....2,4,6,8
 OVERLAPS.....NONE

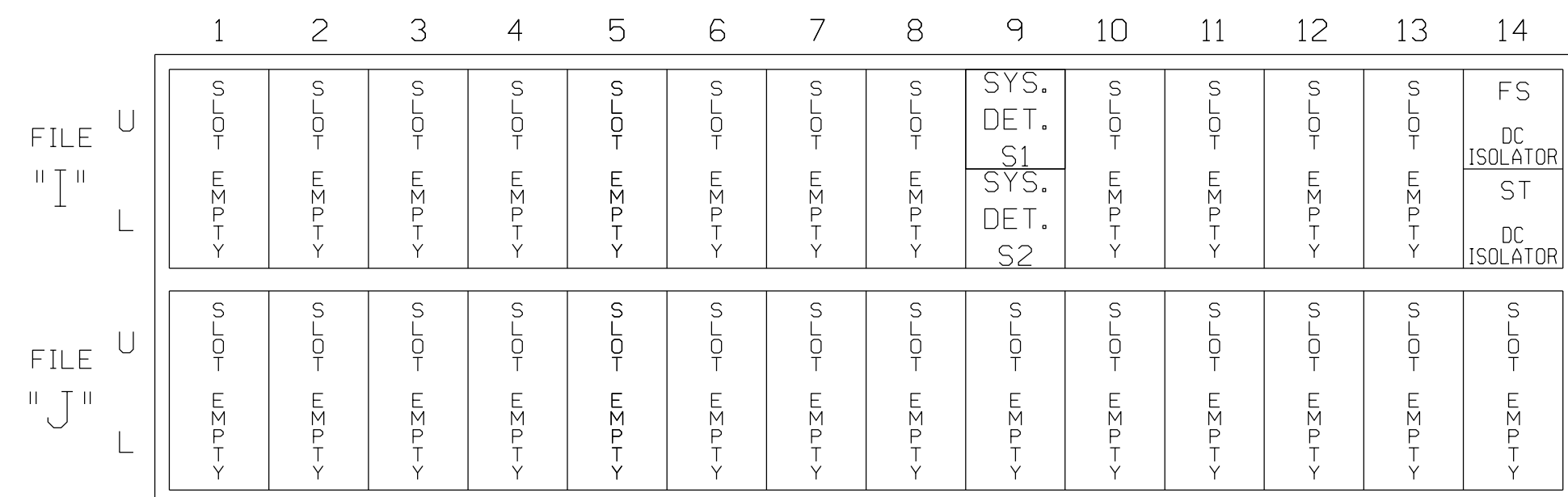
SIGNAL HEAD HOOK-UP CHART

LOAD SWITCH NO.	S1	S2	S3	S4	S5	S6	S7	S8	S9	S10	S11	S12
CMU CHANNEL NO.	1	2	13	3	4	14	5	6	15	7	8	16
PHASE	1	2	2 PED	3	4	4 PED	5	6	6 PED	7	8	8 PED
SIGNAL HEAD NO.	NU	21,22, 23	NU	NU	41,42	NU	NU	61,62, 63	NU	NU	81,82	NU
RED		128			101			134			107	
YELLOW		129			102			135			108	
GREEN		130			103			136			109	
RED ARROW												
YELLOW ARROW												
GREEN ARROW												
Hand icon												
Walking person icon												

NU = Not Used

INPUT FILE POSITION LAYOUT

(front view)



INPUT FILE CONNECTION & PROGRAMMING CHART

LOOP NO.	LOOP TERMINAL	INPUT FILE POS.	PIN NO.	INPUT ASSIGNMENT NO.	DETECTOR NO.	NEMA PHASE	CALL	EXTEND	FULL TIME DELAY	STRETCH TIME	DELAY TIME
* S1	TB6-9,10	I9U	60	22	11	SYS	-	-			
* S2	TB6-11,12	I9L	62	24	13	SYS	-	-			

* System detector only. Remove the vehicle phase assigned to this detector in the default programming.

INPUT FILE POSITION LEGEND: J2L



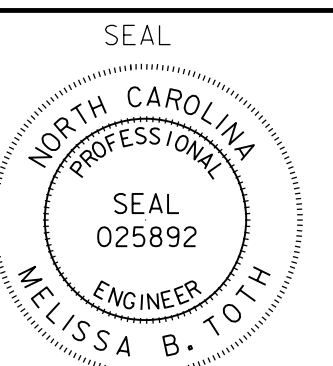
THIS ELECTRICAL DETAIL IS FOR THE SIGNAL DESIGN: HP0614
 DESIGNED: July 2014
 SEALED: June 5, 2015
 REVISED:

Signal Upgrade



Elm Street at Westwood Avenue

Division 07	Guilford County	High Point
PLAN DATE: July 2014	REVIEWED BY: LM Moon	
PREPARED BY: AM Encarnacion	REVIEWED BY: MB Toth	
REVISIONS	INIT.	DATE



DocuSigned by: Melissa B. Toth 6/5/2015
 SIGNATURE DATE
 SIG. INVENTORY NO. HP0614

ATKINS 1616 EAST MILLBROOK ROAD, SUITE 310
 RALEIGH, NORTH CAROLINA 27609
 (919) 876-6888 NCBEES #F-0326