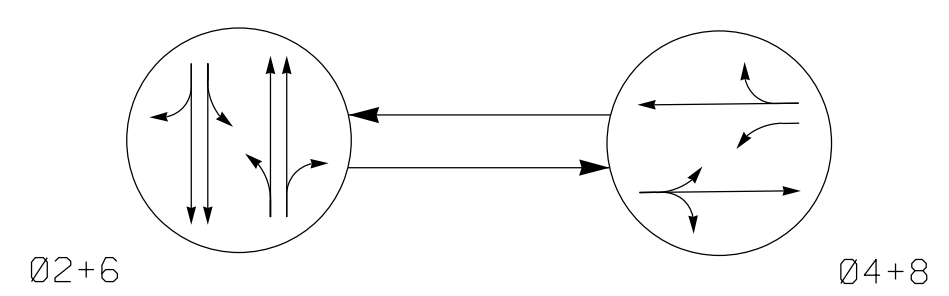


PHASING DIAGRAM



PHASING DIAGRAM DETECTION LEGEND

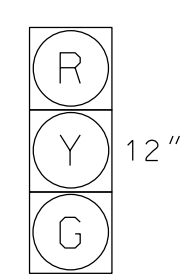
- DETECTED MOVEMENT
- ◄ UNDETECTED MOVEMENT (OVERLAP)
- ⋯ UNSIGNALIZED MOVEMENT
- ⇄ PEDESTRIAN MOVEMENT

TABLE OF OPERATION

SIGNAL FACE	PHASE		
	Ø2+6	Ø4+8	F L R
21, 22	G	R	Y
41, 42	R	G	R
61, 62	G	R	Y
81, 82	R	G	R

SIGNAL FACE I.D.

All Heads L.E.D.

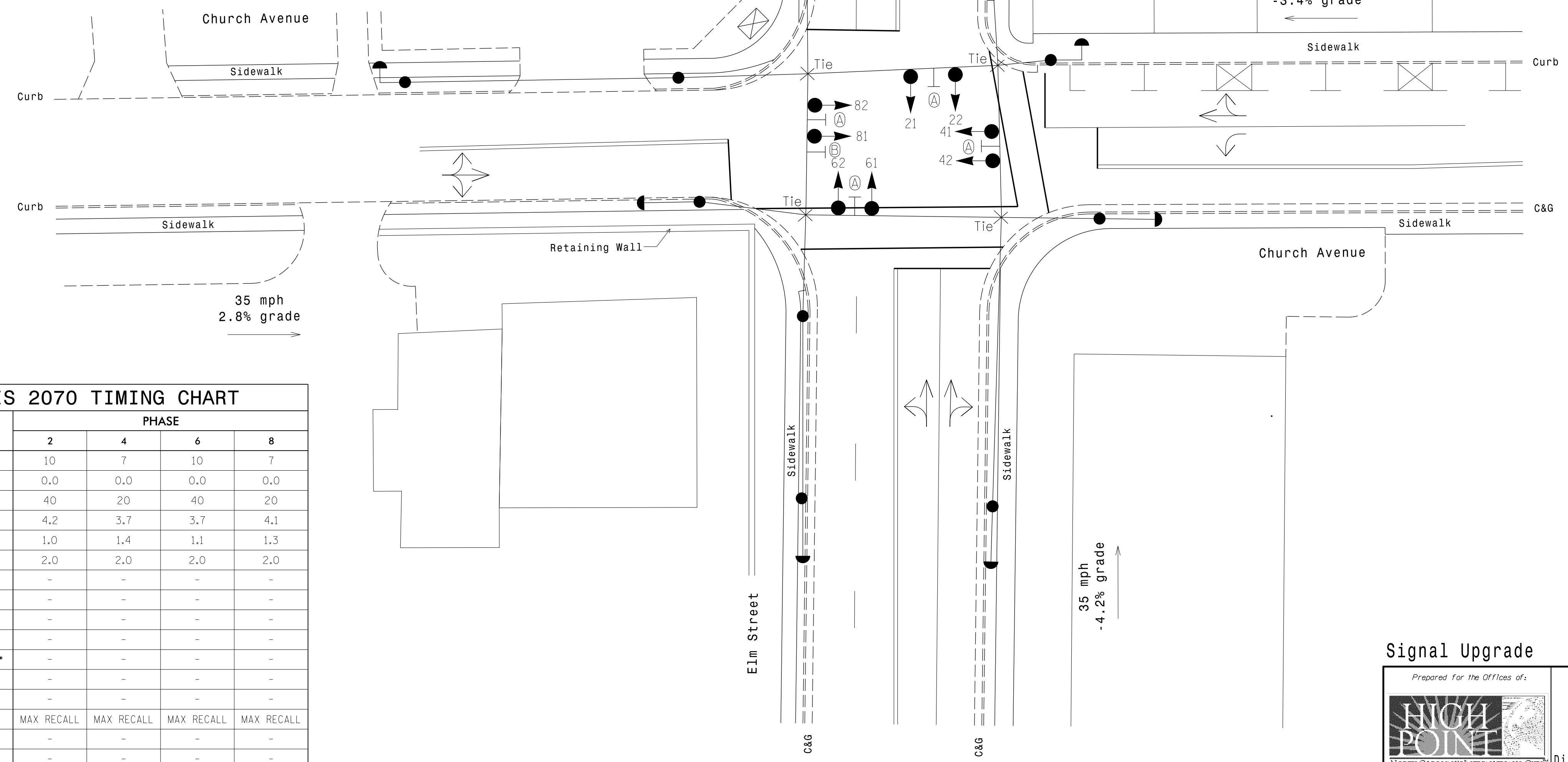


21, 22
41, 42
61, 62
81, 82

**2 Phase
Pre-Timed
(High Point Signal System)**

NOTES

1. Refer to "Roadway Standard Drawings NCDOT" dated January 2012 and "Standard Specifications for Roads and Structures" dated January 2012.
2. Do not program signal for late night flashing operation unless otherwise directed by the Engineer.
3. Locate new cabinet so as not to obstruct sight distance of vehicles turning right on red.
4. Pavement markings are existing.
5. Maximum times shown in timing chart are for free-run operation only. Coordinated signal system timing values supersede these values.



OASIS 2070 TIMING CHART

FEATURE	PHASE			
	2	4	6	8
Min Green 1 *	10	7	10	7
Extension 1 *	0.0	0.0	0.0	0.0
Max Green 1 *	40	20	40	20
Yellow Clearance	4.2	3.7	3.7	4.1
Red Clearance	1.0	1.4	1.1	1.3
Red Revert	2.0	2.0	2.0	2.0
Walk 1 *	-	-	-	-
Don't Walk 1	-	-	-	-
Seconds Per Actuation *	-	-	-	-
Max Variable Initial *	-	-	-	-
Time Before Reduction *	-	-	-	-
Time To Reduce *	-	-	-	-
Minimum Gap	-	-	-	-
Recall Mode	MAX RECALL	MAX RECALL	MAX RECALL	MAX RECALL
Vehicle Call Memory	-	-	-	-
Dual Entry	-	-	-	-
Simultaneous Gap	ON	ON	ON	ON

* These values may be field adjusted. Do not adjust Min Green and Extension times for phases 2 and 6 lower than what is shown. Min Green for all other phases should not be lower than 4 seconds.

LEGEND

PROPOSED	EXISTING
○ Traffic Signal Head	● N/A
◐ Modified Signal Head	◑ N/A
⊥ Sign	⊥ N/A
⊥ Pedestrian Signal Head	⊥ N/A
○ Signal Pole with Guy	● Signal Pole with Guy
○ Signal Pole with Sidewalk Guy	● Signal Pole with Sidewalk Guy
⊠ Inductive Loop Detector	⊠ Inductive Loop Detector
□ Controller & Cabinet	□ Junction Box
⊠ 2-in Underground Conduit	⊠ Right of Way
→ Directional Arrow	→ Directional Arrow
Ⓐ Street Name Sign	Ⓐ Street Name Sign
Ⓑ Left Arrow "ONLY" Sign (R3-5L)	Ⓑ Left Arrow "ONLY" Sign (R3-5L)

Signal Upgrade

<p>Department of Transportation 211 S. Hamilton Street High Point, NC 27260</p>	<p>Elm Street at Church Avenue</p>		
	<p>Division 07 Guilford County High Point</p>	<p>PLANNED BY: April 2014</p>	
<p>PREPARED BY: IW Berdeau</p>	<p>REVIEWED BY: LM Moon</p>	<p>DATE: _____</p>	<p>DATE: _____</p>
<p>SCALE: 1"=20'</p>	<p>REVISIONS:</p>	<p>INIT. DATE</p>	<p>DATE</p>
<p>ATKINS</p>	<p>1616 EAST MILLBROOK ROAD, SUITE 310 RALEIGH, NORTH CAROLINA 27609 (919) 876-6888 NCBEE #F-0326</p>	<p>DocuSigned by: Melissa B. Toth 6/5/2015</p>	<p>SIG. INVENTORY NO. HP0613</p>

05-JUN-2015 15:54
 D:\Transportation\Projects\Curran\100037777 - High Point Sig Sys\Signal\Design\Package - HP0613.dgn
 WLEZ054 - AT 025892.dwg