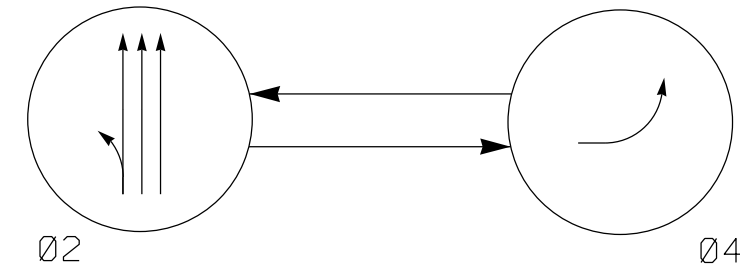


PHASING DIAGRAM



PHASING DIAGRAM DETECTION LEGEND

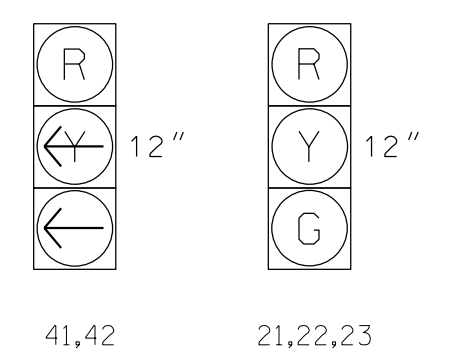
- ← DETECTED MOVEMENT
- ← UNDETECTED MOVEMENT (OVERLAP)
- ⋯ UNSIGNALIZED MOVEMENT
- ⋯ PEDESTRIAN MOVEMENT

TABLE OF OPERATION

SIGNAL FACE	PHASE		
	02	04	FLASH
21,22,23	G	R	Y
41,42	R	←	R

SIGNAL FACE I.D.

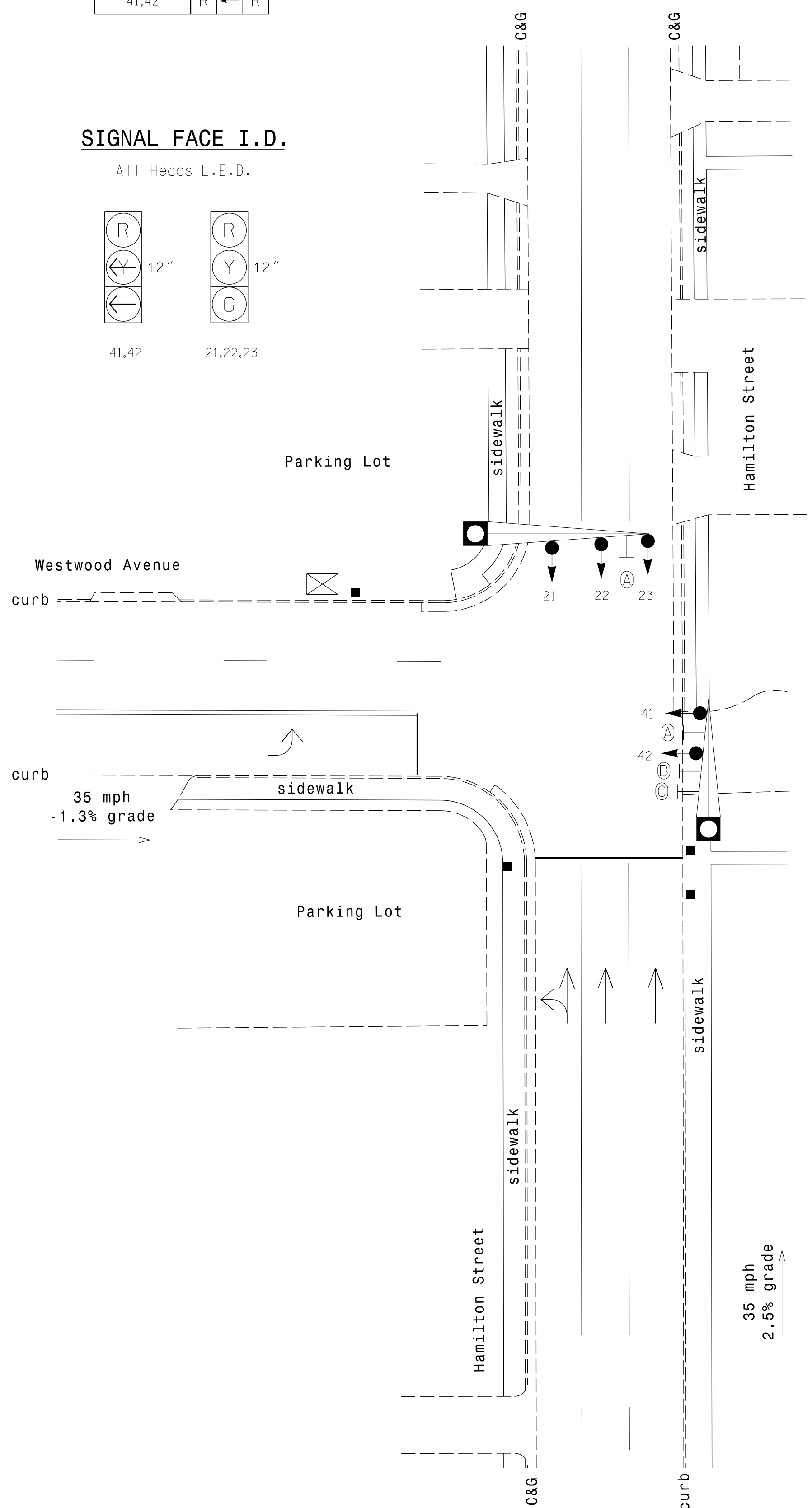
All Heads L.E.D.



**2 Phase
Pre-Timed
(High Point Signal System)**

NOTES

1. Refer to "Roadway Standard Drawings NCDOT" dated January 2012 and "Standard Specifications for Roads and Structures" dated January 2012.
2. Do not program signal for late night flashing operation unless otherwise directed by the Engineer.
3. Locate new cabinet so as not to obstruct sight distance of vehicles turning right on red.
4. Pavement markings are existing.
5. Maximum times shown in timing chart are for free-run operation only. Coordinated signal system timing values supersede these values.



**OASIS 2070
TIMING CHART**

FEATURE	PHASE	
	2	4
Min Green 1 *	10	7
Extension 1 *	0.0	0.0
Max Green 1 *	40	20
Yellow Clearance	3.7	3.0
Red Clearance	1.2	2.3
Red Revert	2.0	2.0
Walk 1 *	-	-
Don't Walk 1	-	-
Seconds Per Actuation *	-	-
Max Variable Initial *	-	-
Time Before Reduction *	-	-
Time To Reduce *	-	-
Minimum Gap	-	-
Recall Mode	MAX RECALL	MAX RECALL
Vehicle Call Memory	-	-
Dual Entry	-	-
Simultaneous Gap	ON	ON

* These values may be field adjusted. Do not adjust Min Green and Extension times for phases 2 and 6 lower than what is shown. Min Green for all other phases should not be lower than 4 seconds.

LEGEND

PROPOSED	EXISTING
	N/A
N/A	

Signal Upgrade

 NORTH CAROLINA INTERNATIONAL CITY Department of Transportation 211 S. Hamilton Street High Point, NC 27260	Hamilton Street at Westwood Avenue		SEAL ENGINEER MELISSA B. TOTH
	Division 07 Guilford County High Point	PLAN DATE: July 2014 PREPARED BY: AM Encarnacion	
SCALE 0 20 1"=20'	REVISIONS INIT. DATE	SIGNED BY: Melissa B. Toth SIGNATURE DATE 6/5/2015	SIG. INVENTORY NO. HP0609

ATKINS 1616 EAST MILLBROOK ROAD, SUITE 310
 RALEIGH, NORTH CAROLINA 27609
 (919) 876-6888 NCBEES #F-0326

05-JUN-2015 15:54
 D:\Transportation\Projects\Curran\100037777 - High Point Sigs\Sigs\Signal\Design\Package 2\HP0609.dgn
 WLEZ054 AT 02520140